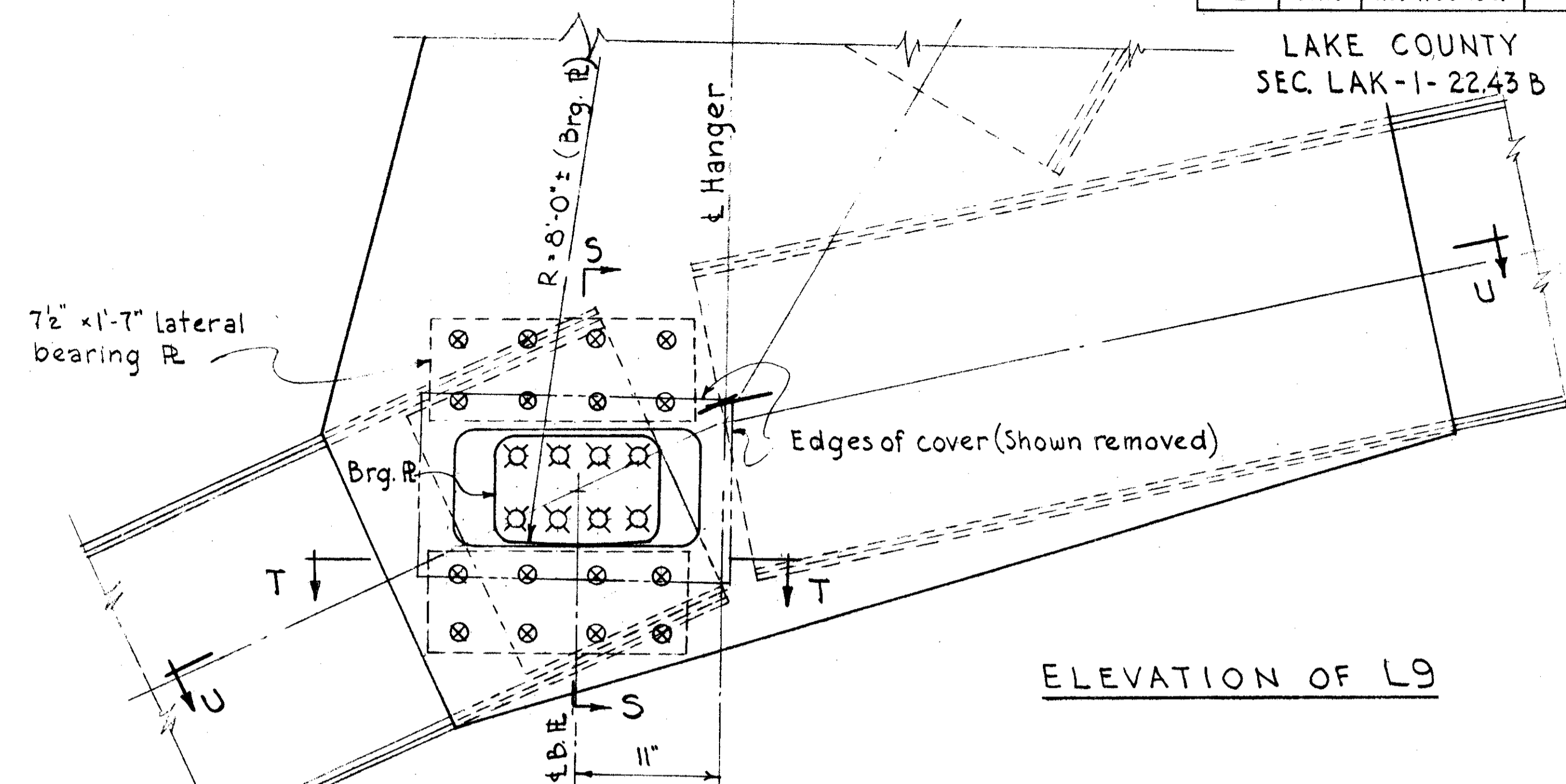
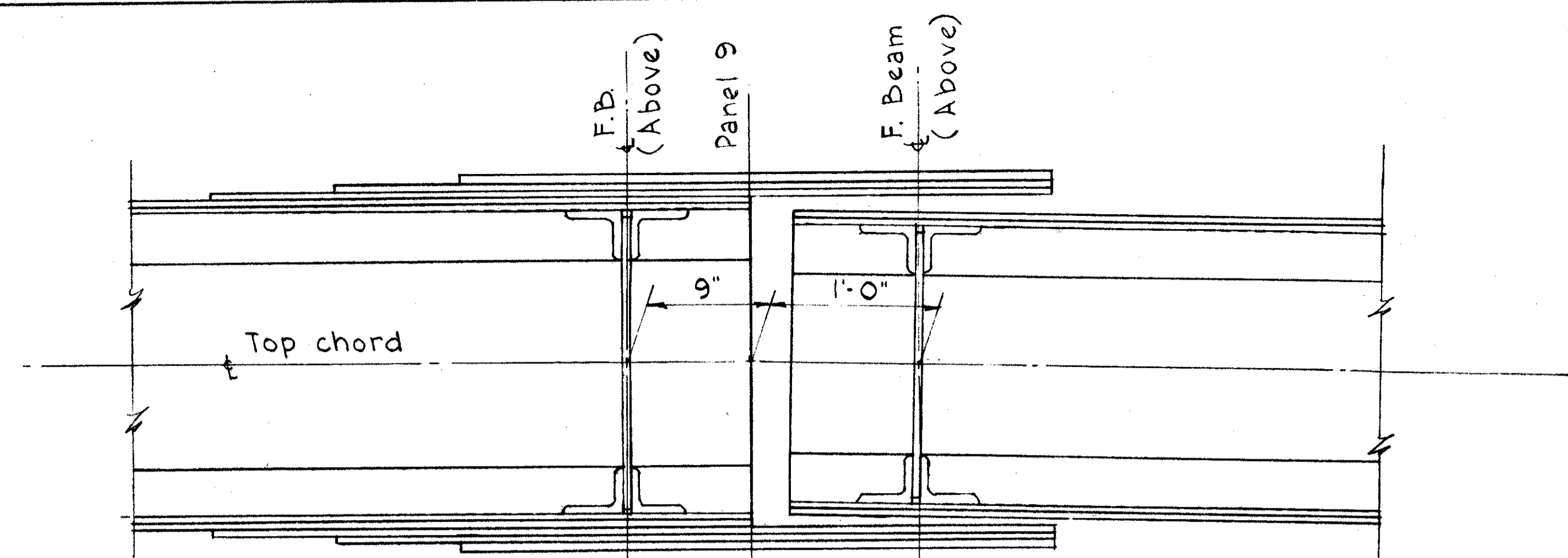


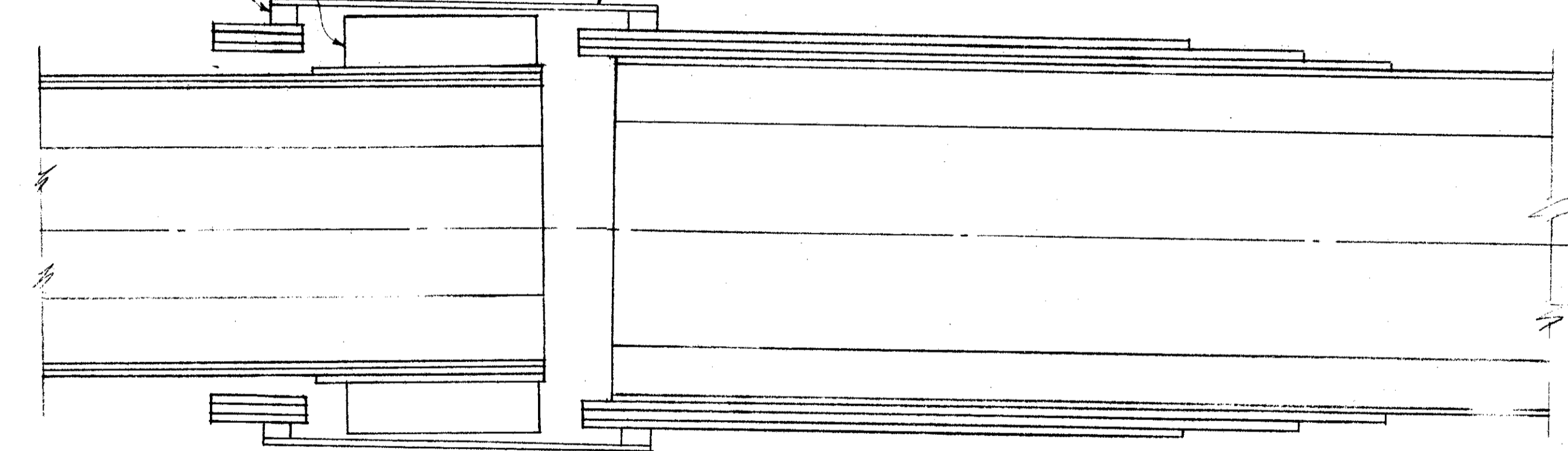
LAKE COUNTY
SEC. LAK-1-22.43 B



ELEVATION OF L9

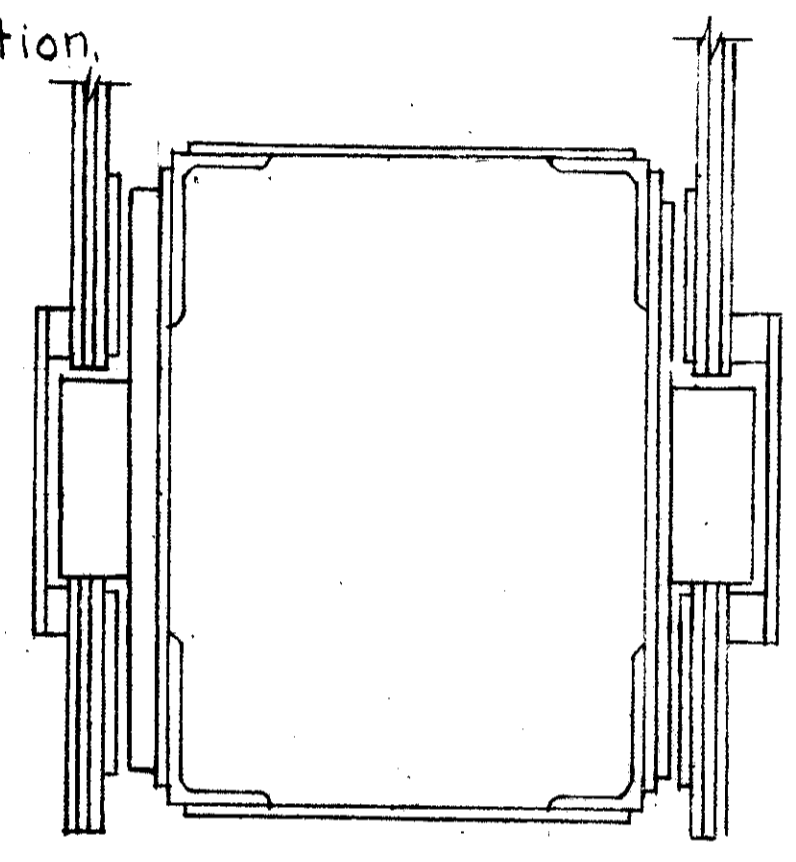
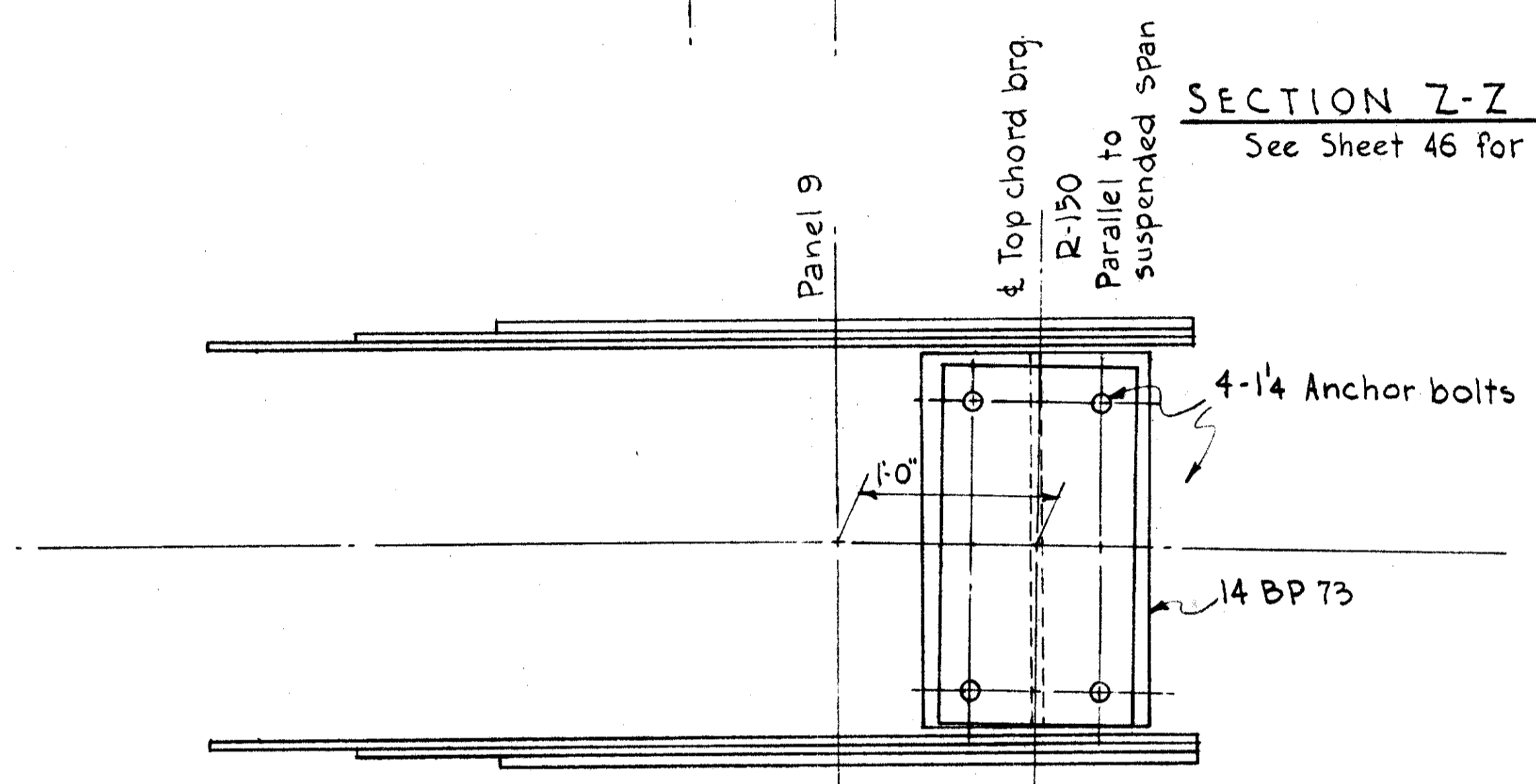
Fill space around brg R with heavy grease.
Machine moving contact surfaces parallel to the direction of movement.
Fabricate expansion devices to permit 3" of horizontal movement in either direction.

Fill, cut from 13 1/2" x 1 1/4" x 1-11" R
Bearing R 8 x 3 1/2 x 1'-0"
3/8" Cover, fasten with 6-3/8 x 3" machine screws.



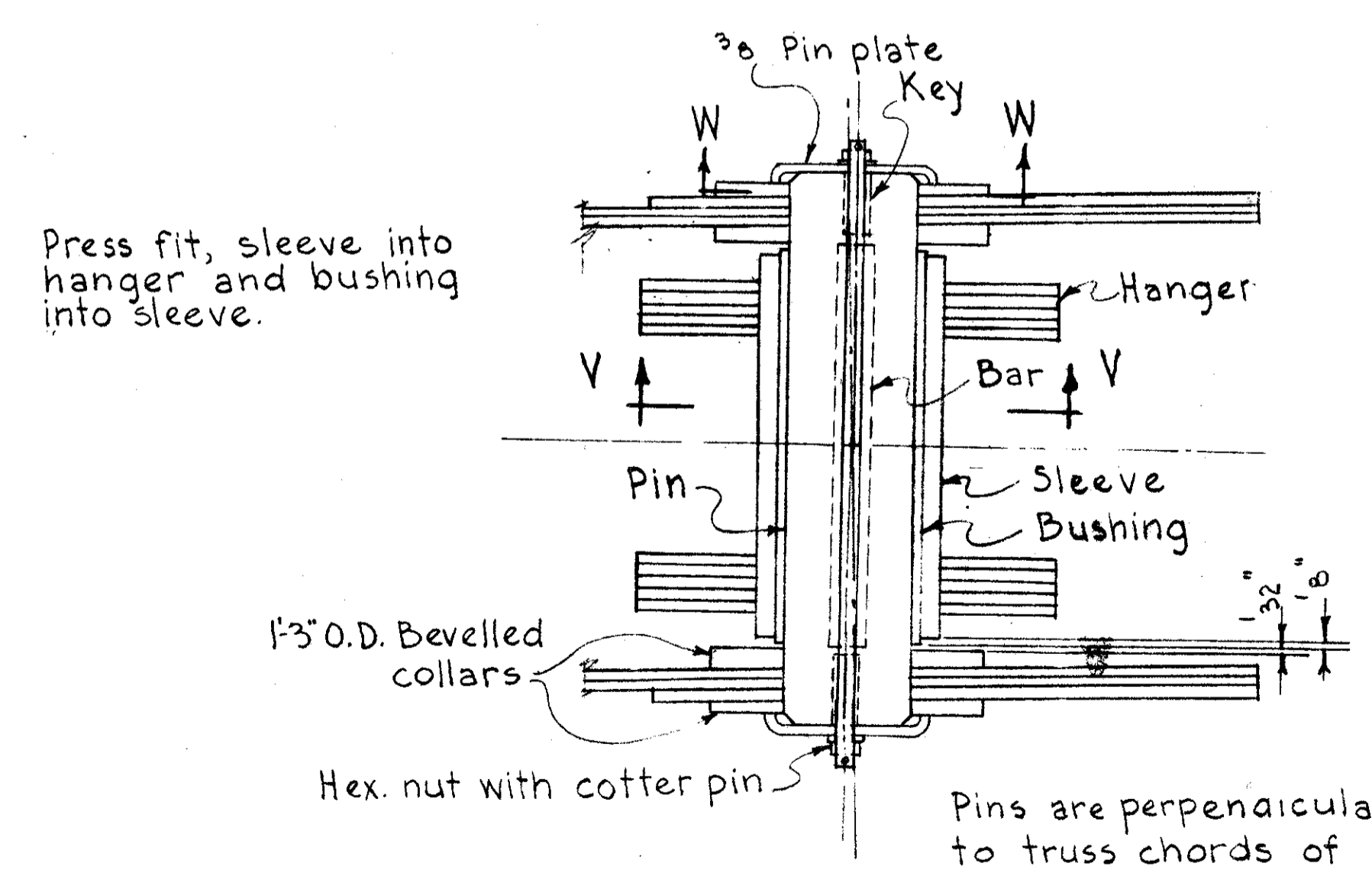
SECTION U-U

SECTION Z-Z
See Sheet 46 for location.

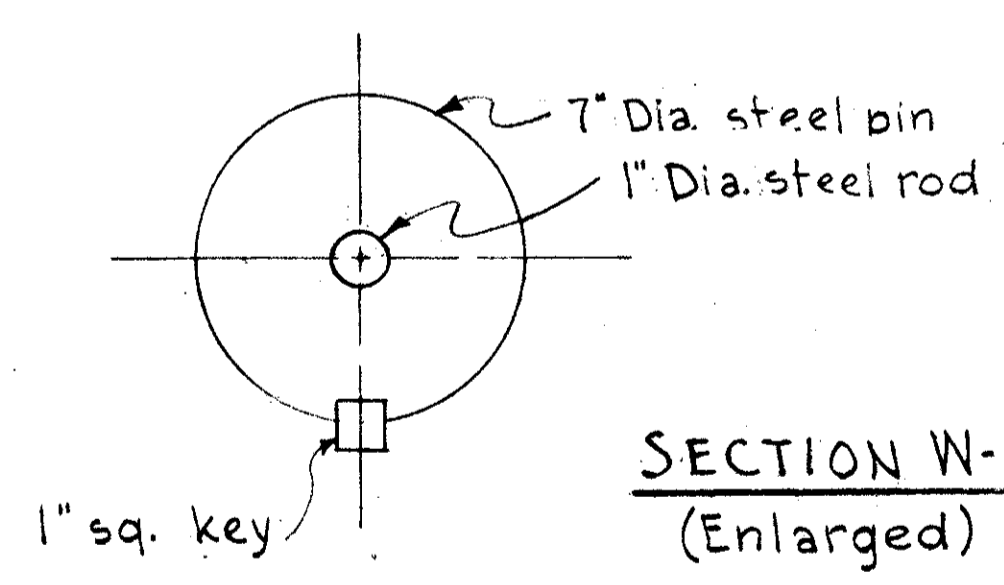


SECTION S-S

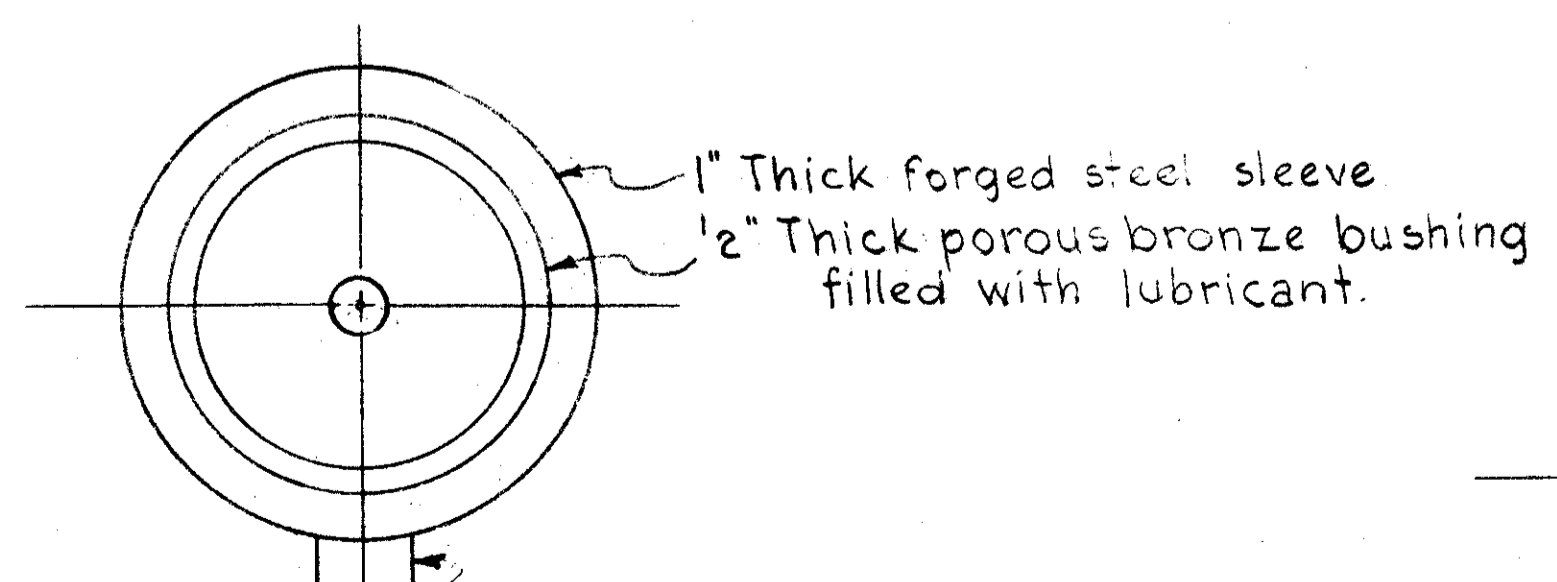
SECTION Y-Y
See Sheet 46 for location.



SECTION X-X



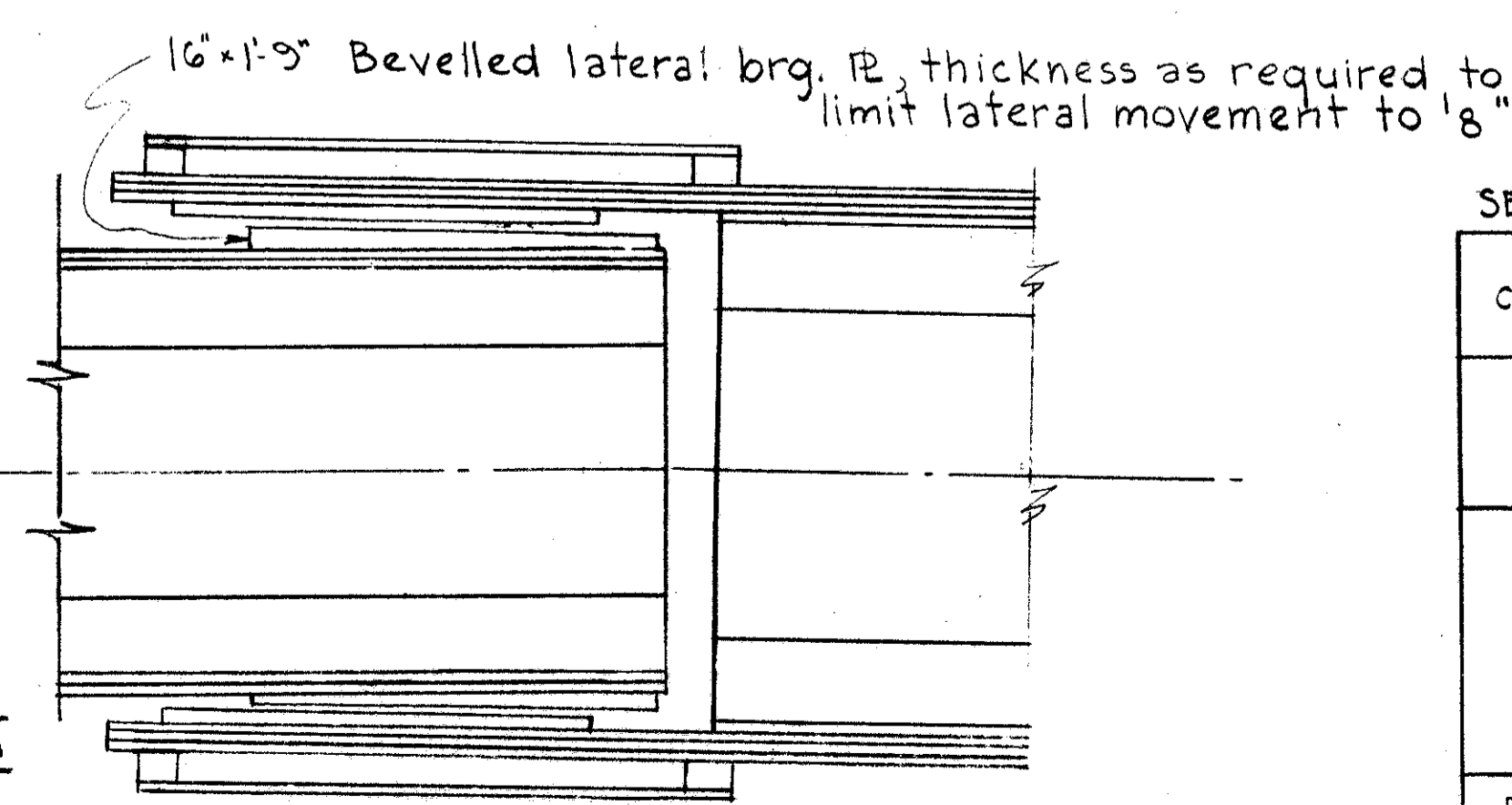
SECTION W-W
(Enlarged)



SECTION V-V
(Enlarged)

2x1 steel bar, fasten with 4-3/8 x 2 machine screws; length of bar as required to prevent longitudinal movement of sleeve.

SECTION T-T



This sheet is to be used for construction and is added to those replacing the Bidding Plans 9-16-55

SEC. C-34-B FED. AID PROJ. NO. ACI-1103 (30)					
PREPARED BY CAPITOL ENGINEERING ASSOCIATES, DILLSBURG, PA. FOR					
STATE OF OHIO DEPARTMENT OF HIGHWAYS					
DETAILS OF JOINTS U9 & L9 BRIDGE NO. LAK-1-2252 S.R.I. OVER GRAND RIVER LAKE COUNTY					
STA. 835 + 75.00					
DESIGNED	DRAWN	TRACED	CHECKED	REVISED DATE	REVISED