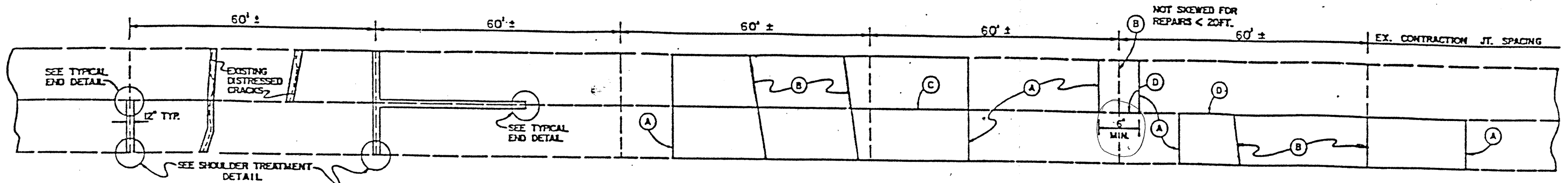


# PAVEMENT REPLACEMENT DETAILS (PANELS, JOINTS AND CRACKS)

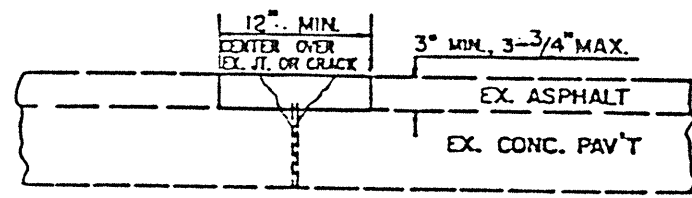
LAKE COUNTY  
LAK-90-21.51



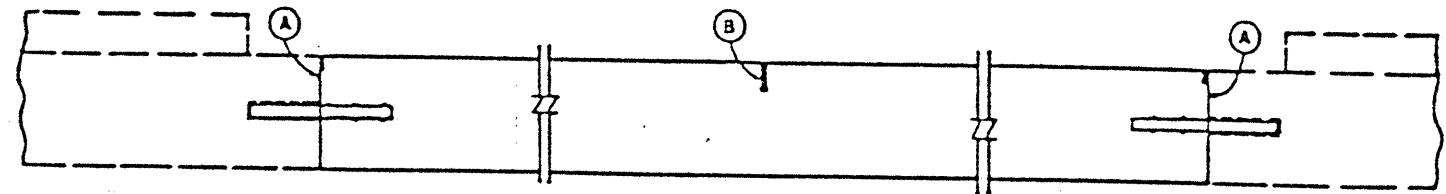
PARTIAL DEPTH JOINT OR CRACK REPAIR

TYPICAL TWO LANE REPLACEMENT

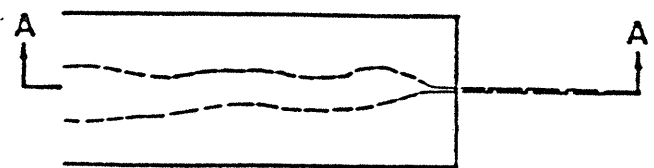
TYPICAL ONE LANE REPLACEMENT



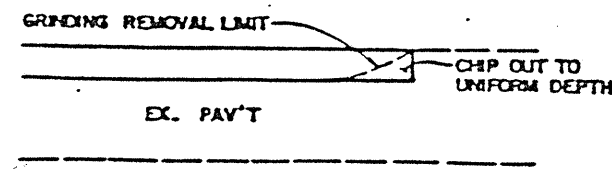
ITEM-SPECIAL-PARTIAL DEPTH PAV'T REPAIR



ITEM SPECIAL - FULL DEPTH RIGID PAVEMENT REMOVAL AND RIGID REPLACEMENT

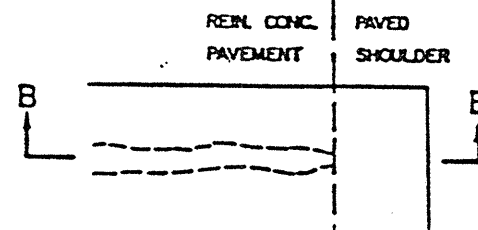


DISTRESSED JOINT-PLAN VIEW

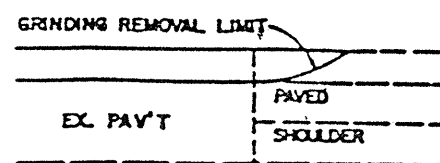


SECTION A-A

TYPICAL END DETAIL



DISTRESSED JOINT-PLAN VIEW



SECTION B-B

SHOULDER TREATMENT DETAIL

MEASURED QUANTITY SHALL NOT INCLUDE THE PAVED SHOULDER AREA

### LEGEND

- (A) TYPE T TIED REPAIR JOINT, AS PER BP-13
- (B) SAWED CONTRACTION JOINT AS PER BP-4 (SKEWED 2-12, MAX. SPACING 20')
- (C) LONGITUDINAL BUTT JOINT AS PER BP-3 (USING HOOK BOLTS)
- (D) LONGITUDINAL JOINT AS PER BP-13

SEE GENERAL NOTES ON SHEETS 9-II FOR ADDITIONAL INFORMATION

REINFORCING MESH AS SHOWN ON STD. DRAWING BP-13 IS NOT REQUIRED.

### ESTIMATED QUANTITIES

ITEM SPECIAL	FULL DEPTH RIGID PAVEMENT REMOVAL AND RIGID REPLACEMENT	20,300	SQ. YDS.
ITEM SPECIAL	FULL DEPTH PAVEMENT SAWING	52,950	LN. FT.
ITEM 203	EXCAVATION NOT INCLUDING EMBANKMENT CONSTRUCTION	1,015	CU. YDS.
ITEM 301	BITUMINOUS AGGREGATE BASE	200	CU. YDS.
ITEM 304	AGGREGATE BASE	1,015	CU. YDS.
ITEM 605	AGGREGATE DRAINS	6,200	LN. FT.

SEE GENERAL NOTE ON SHEET NO. 11/81 FOR ADDITIONAL INFORMATION

ESTIMATED QUANTITY	
ITEM SPECIAL-PARTIAL DEPTH PAVEMENT REPAIR	11,000 SY.