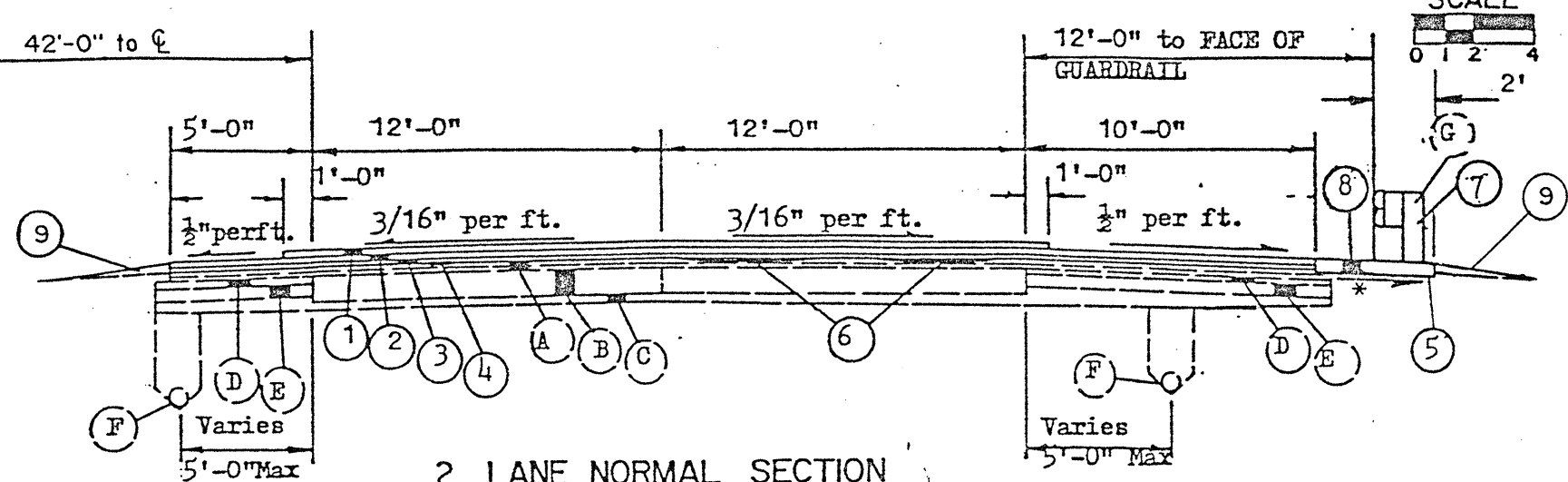
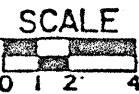


TYPICAL SECTIONS

TYPE ITEM SPECIAL RUBBERIZED OPEN GRADED ON 846



2 LANE NORMAL SECTION

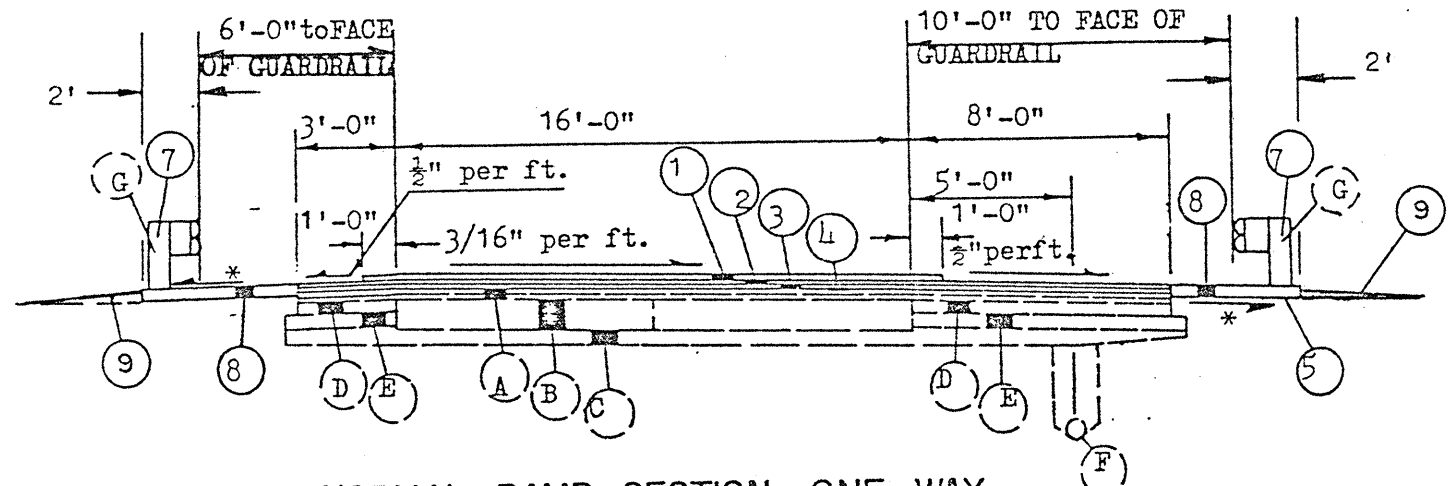
STA. 730+00 to STA. 830+09
STA. 838+68.50 to STA. 119+07.39

NOTES

TYPICAL SECTIONS ARE INTENDED TO SHOW THE GENERAL ROADWAY AND PAVEMENT FEATURES ONLY. FOR DETAILS SEE THE PLAN SHEETS AND DETAIL SHEETS

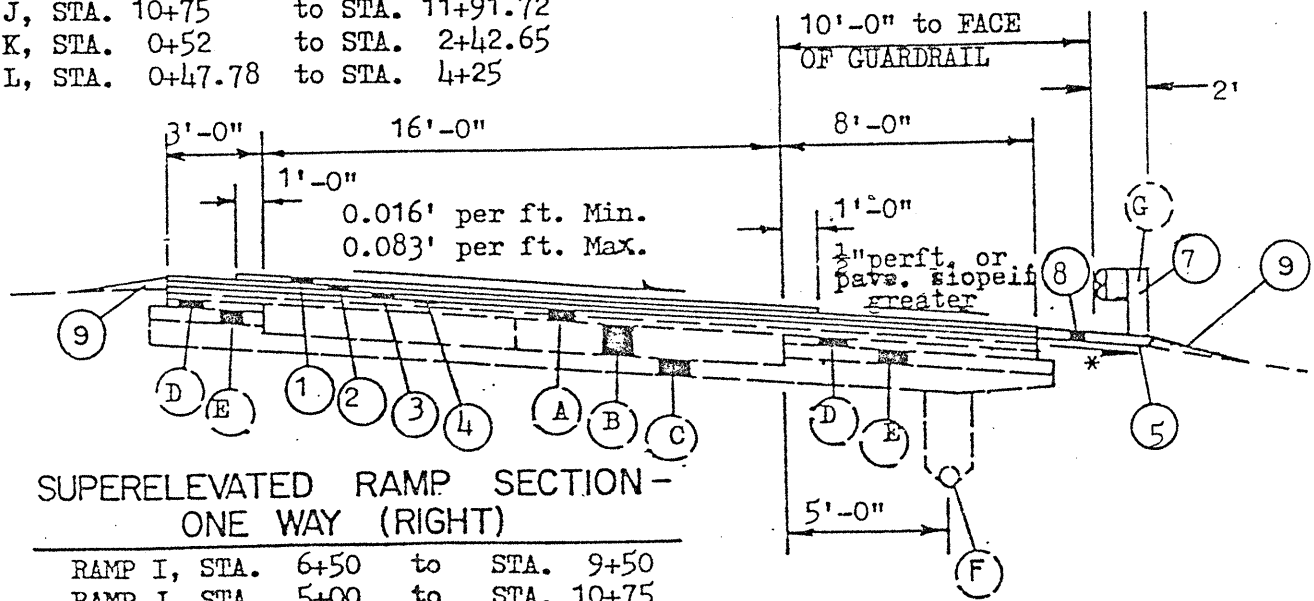
SPREADING EQUIPMENT: AN AUTOMATIC SCREED CONTROL HAVING A 40 FOOT SKI ARM SHALL BE USED FOR PLACING THE INTERMEDIATE COURSE (SEE PROPOSAL NOTE). FOR FULL WIDTH PAVING, THE WIDTH LAID SHALL NOT EXCEED THE PAVER'S RATED WIDTH AS RECOMMENDED BY THE PAVER MANUFACTURER.

LONGITUDINAL JOINTS: LONGITUDINAL JOINTS BETWEEN A PAVEMENT LANE AND ADJOINING BERM OR SPEED CHANGE LANE AND BETWEEN A SPEED CHANGE LANE AND THE ADJOINING BERM SHALL BE MADE THE SAME DAY. ALL LONGITUDINAL JOINTS SHALL BE HOT WITH THE EXCEPTION OF ONE COLD JOINT PER ROADWAY. LONGITUDINAL JOINT LOCATIONS SHALL BE AS APPROVED BY THE ENGINEER. EACH RAMP SHALL HAVE ONLY ONE LONGITUDINAL COLD JOINT LOCATED APPROXIMATELY HALFWAY ACROSS THE RAMP.



NORMAL RAMP SECTION - ONE WAY

RAMP I, STA. 5+53.07 to STA. 6+50
RAMP I, STA. 9+50 to STA. 12+05.48
RAMP J, STA. 10+75 to STA. 11+91.72
RAMP K, STA. 0+52 to STA. 2+42.65
RAMP L, STA. 0+47.78 to STA. 4+25



SUPERELEVATED RAMP SECTION - ONE WAY (RIGHT)

RAMP I, STA. 6+50 to STA. 9+50
RAMP J, STA. 5+00 to STA. 10+75
RAMP K, STA. 2+42.65 to STA. 5+90.23
RAMP L, STA. 4+25 to STA. 8+68.60

PROPOSED	LEGEND
① ITEM SPECIAL	3/4" OPEN GRADED ASPHALT CONCRETE FRICTION COURSE, RUBBERIZED (SEE PROPOSAL NOTES)
② ITEM 846	1 1/2" ASPHALT CONCRETE SURFACE COURSE, TYPE I, AC-20
③ ITEM 448	1/2" MIN. ASPHALT CONCRETE INTERMEDIATE COURSE, TYPE I, AC-20 (3/4" AVG.)
④ ITEM 407	TACK COAT, AS PER PLAN
⑤ ITEM 203	LINEAR GRADING (TO BE USED ON ALL SHOULDERS)
⑥ ITEM 807	LATEX MODIFIED EMULSIFIED ASPHALT PAVEMENT COURSE
⑦ ITEM 606	GUARDRAIL, TYPE 5
⑧ ITEM 404	3" ASPHALT CONCRETE, AC-20, AS PER PLAN
⑨ ITEM 617	COMPACTED AGGREGATE
EXISTING	
(A)	3" ASPHALT CONCRETE
(B)	10" REINFORCED PORTLAND CEMENT CONCRETE PAVEMENT
(C)	SUBBASE
(D)	BITUMINOUS AGGREGATE BASE
(E)	STABILIZED CRUSHED AGGREGATE
(F)	UNDERDRAIN
(G)	GUARDRAIL (TO BE REMOVED)

*--1/2" PER FOOT MINIMUM