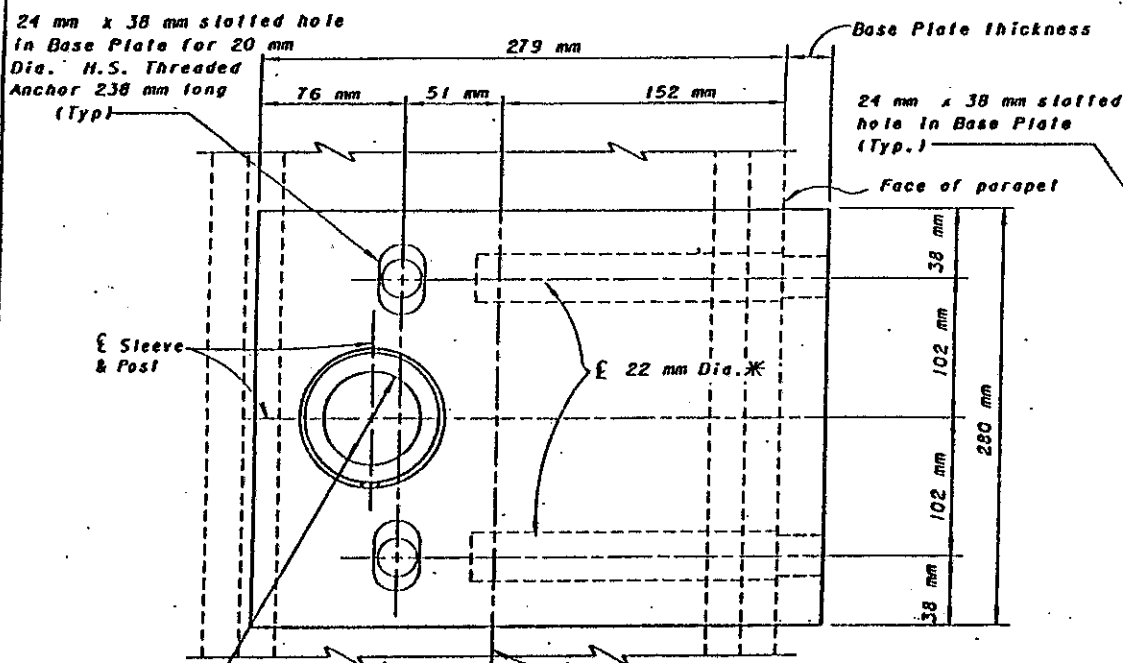
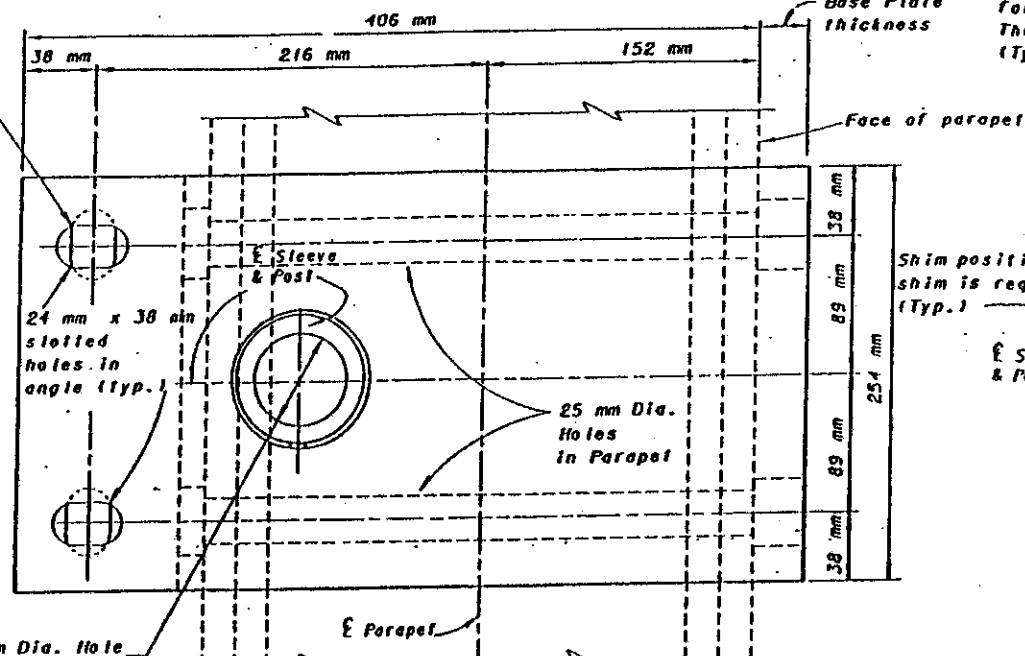


# RETROFIT BASE PLATES FOR FENCE POSTS



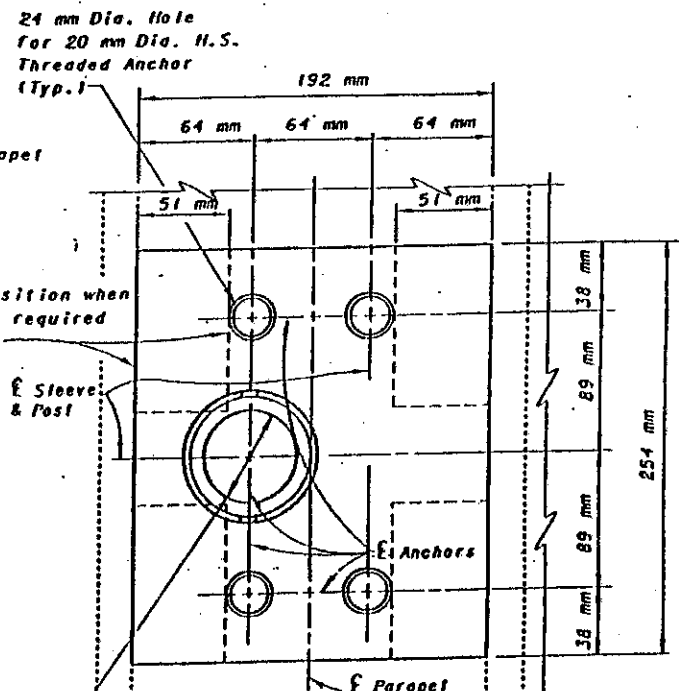
**PLAN BP-3**

Notes: Top rail for BR-1-65 Railing with Type 2 posts not shown.



**PLAN BP-4**

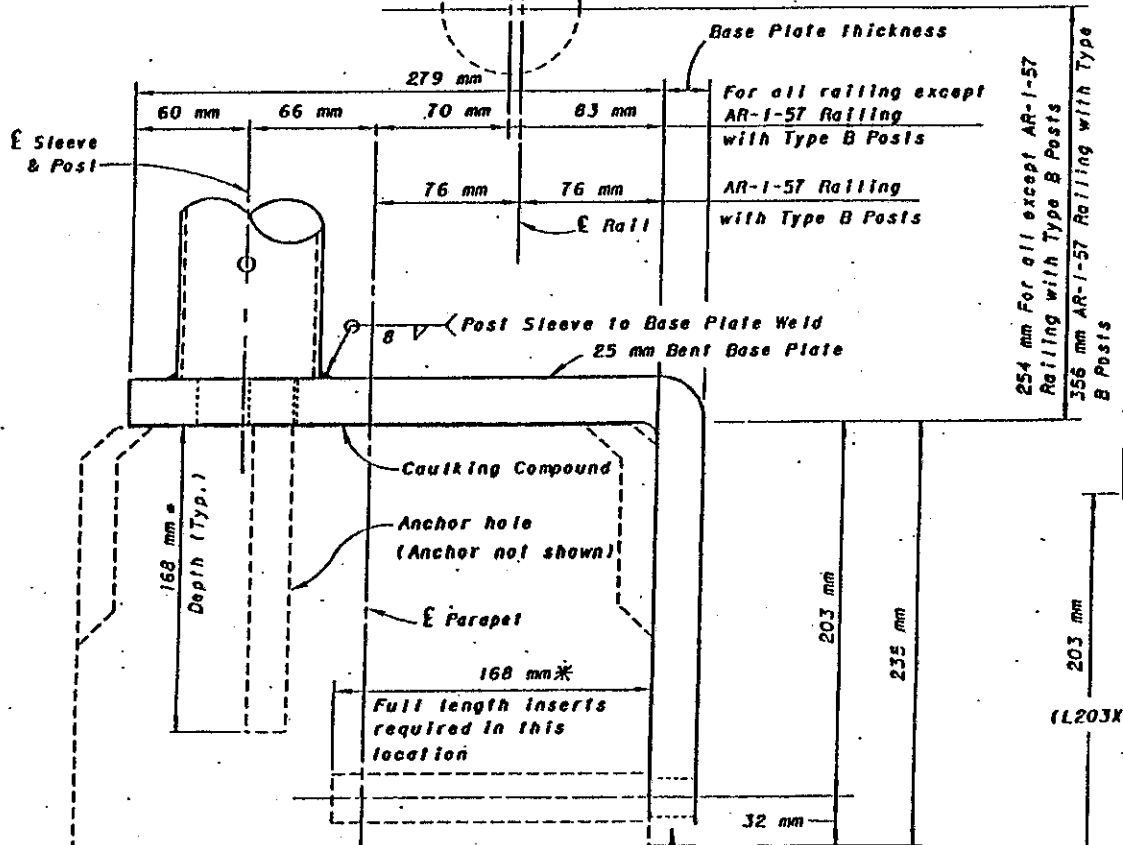
SHIM PORTIONS, POST AND SET SCREW NOT SHOWN



**PLAN BP-5**

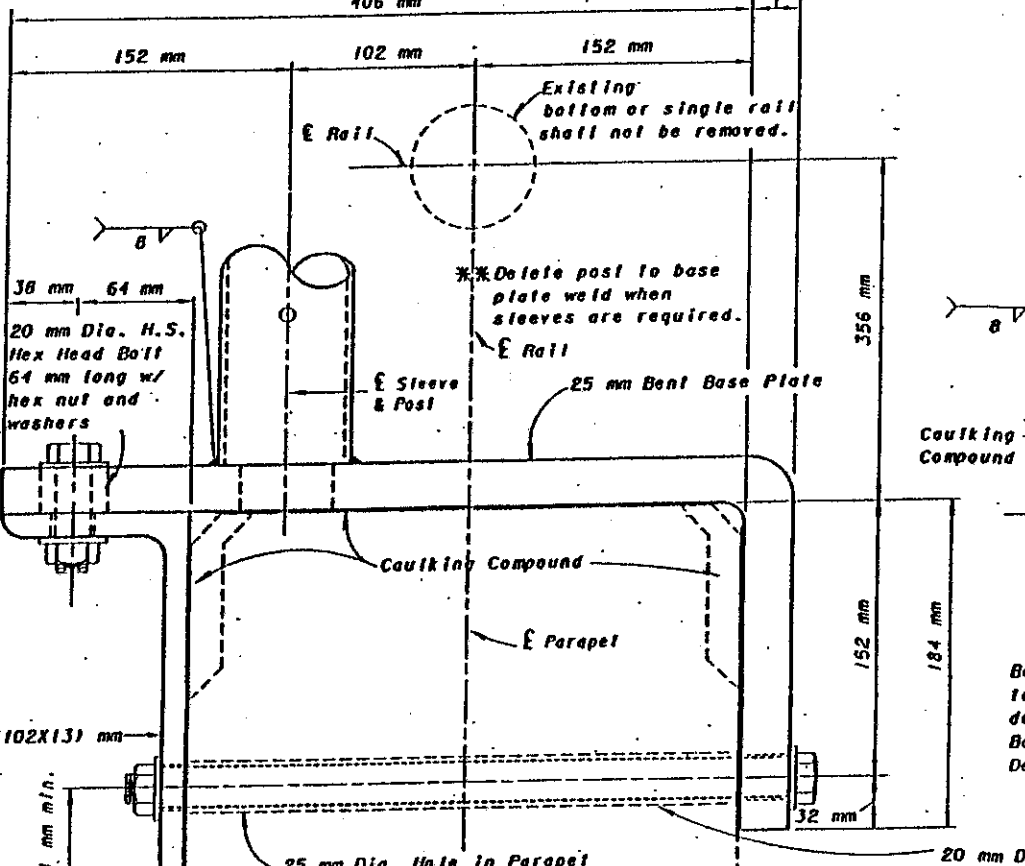
SHIM PORTIONS SHOWN

50 mm Dia. Hole in Base Plate  
 \* Holes for 20 mm Dia. Vinylster Flush Inserts (Inserts, Bolts and Washers not shown)  
 SHIM PORTIONS, POST AND SET SCREW NOT SHOWN  
 Existing bottom or single rail shall not be removed.



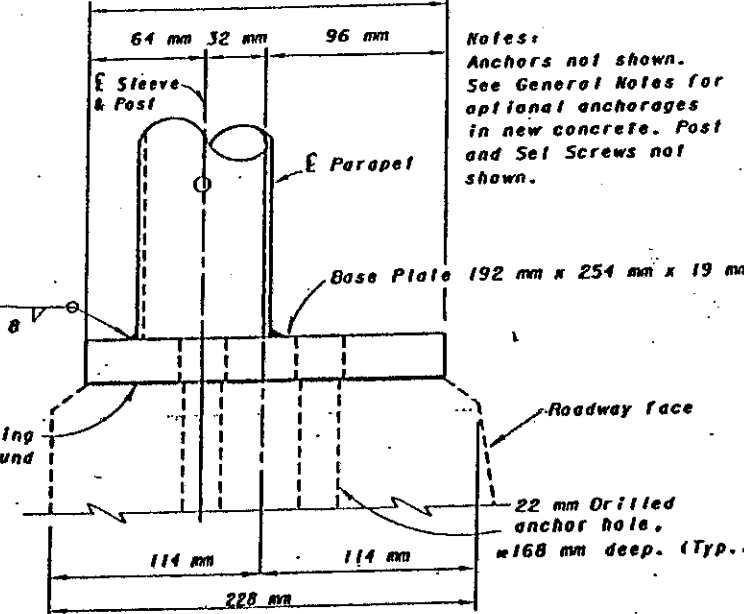
**END VIEW BP-3**

24 mm Dia. hole in Bent Plate for 20 mm Dia. H.S. Bolts 57 mm long, 35 mm min. threaded length with washers (2 Required)



**END VIEW BP-4**

Base Plate shall be used on concrete parapet with aluminum railing as shown on Standard Drawing AR-1-57 with Type A and C posts. Existing aluminum rail shall not be removed. Base Plate requires a sleeve. See Sleeve Details on Sheet [37].



**END VIEW BP-5**

Base Plate shall be used to connect fence post to existing BR-1-67 parapet and existing or new BR-1 deflector parapet when 1850 mm fence is specified. Base Plate requires a sleeve. See Post Sleeve Details on Sheet [37].

Base Plate shall be used on concrete parapet with aluminum railing as shown on Standard Drawings BR-2-82, BR-2-67, BR-1-65 with Types 1 & 2 posts, and AR-1-57 with Type B posts. Existing aluminum rail shall not be removed. Base Plate requires a sleeve. See Sleeve Details on Sheet [37].

\* or as recommended by the fastener manufacturer. Inserts shall be approved by the Director.

DESIGN AGENCY	BUREAU OF BRIDGES	AND STRUCTURAL DESIGN	
STATE OF OHIO DEPARTMENT OF TRANSPORTATION	ENGINEER OF BRIDGES	DATE	8-20-95
JCR	RD	WTF/LMW	VPE-1-90H
GFJ/RJS	DRAWING NO.	CHECKED	REVISED
STANDARD DRAWING	VANDAL PROTECTION FENCE	PREPARED	DRAWING NO.
BASE PLATES WHEN	RAILS ARE NOT REMOVED	DRAWN	VPE-1-90H
4	7		