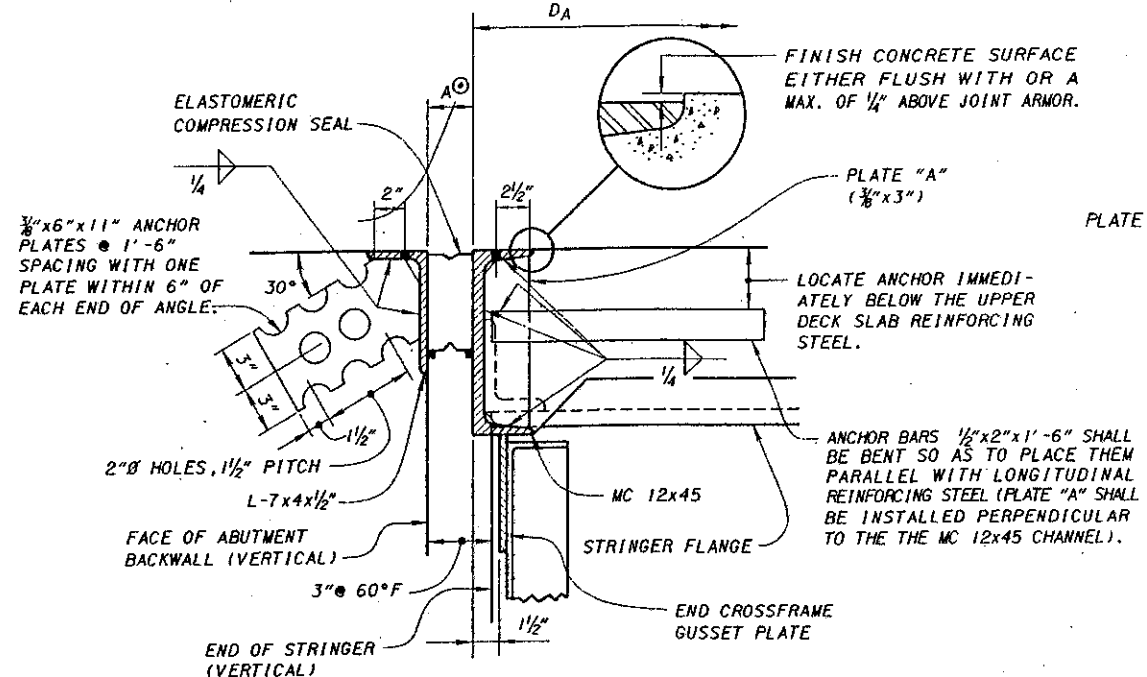


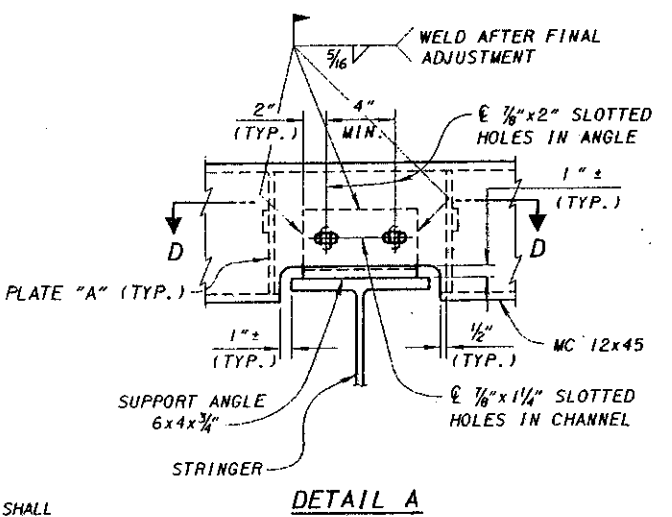
PART PLAN AT ABUTMENT
FOR BRIDGES WITH DEFLECTOR PARAPET RAILING

JOINTS IN END DAM ARMOR
TRANSVERSE JOINTS IN SUPERSTRUCTURE ANGLES OR CHANNEL SHALL HAVE COMPLETE PENETRATION BUTT WELDS. TRANSVERSE JOINTS IN ABUTMENT ANGLE SHALL BE CLOSELY BUTTED WITH A MINIMUM OF 6'-0" BETWEEN JOINTS. WELDS IN CONTACT WITH SEAL SHALL BE GROUND FLUSH.

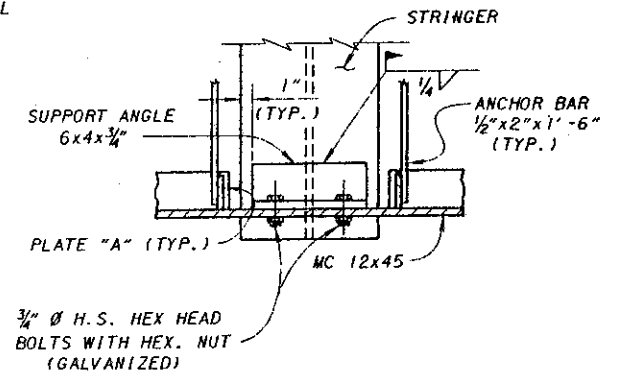


SECTION A-A
WITH ROADWAY GRADIENT OF 2% OR LESS SHOWN

NOTE: FOR DIMENSIONS A[⊙], D_A, ADDITIONAL NOTES AND DETAILS SEE SHEETS 2/3 AND 3/3.

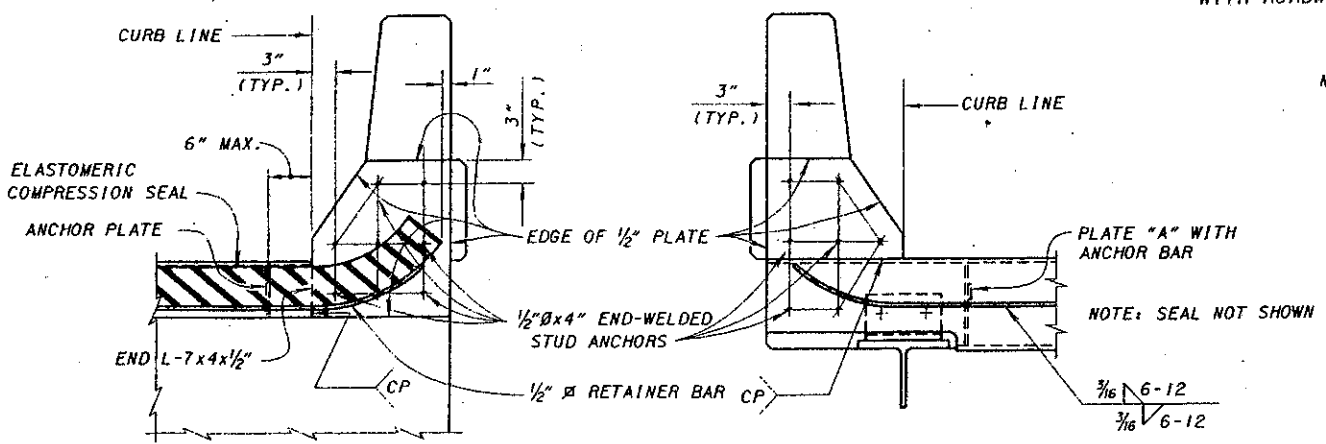


DETAIL A



SECTION D-D

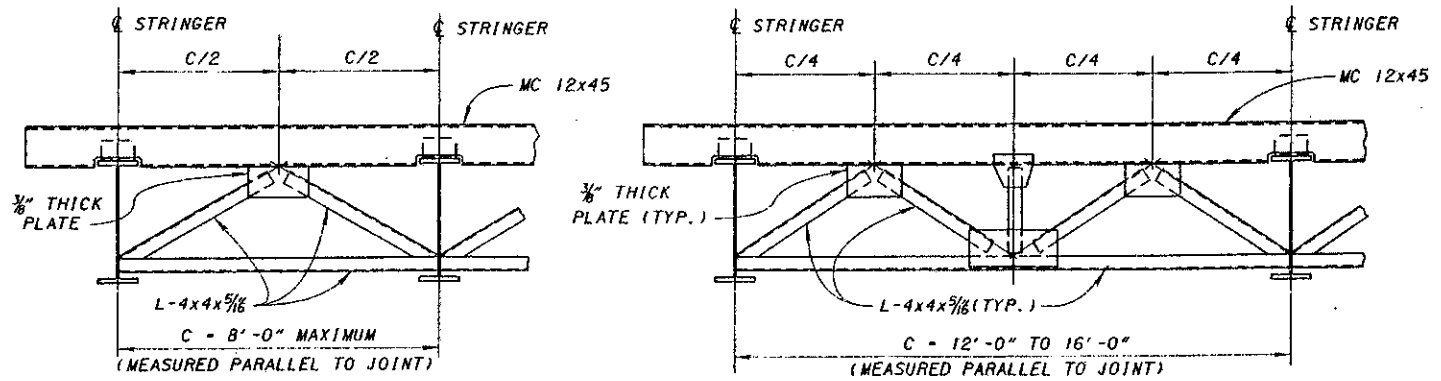
3/4" Ø H.S. HEX HEAD BOLTS WITH HEX. NUT (GALVANIZED)



SECTION B-B

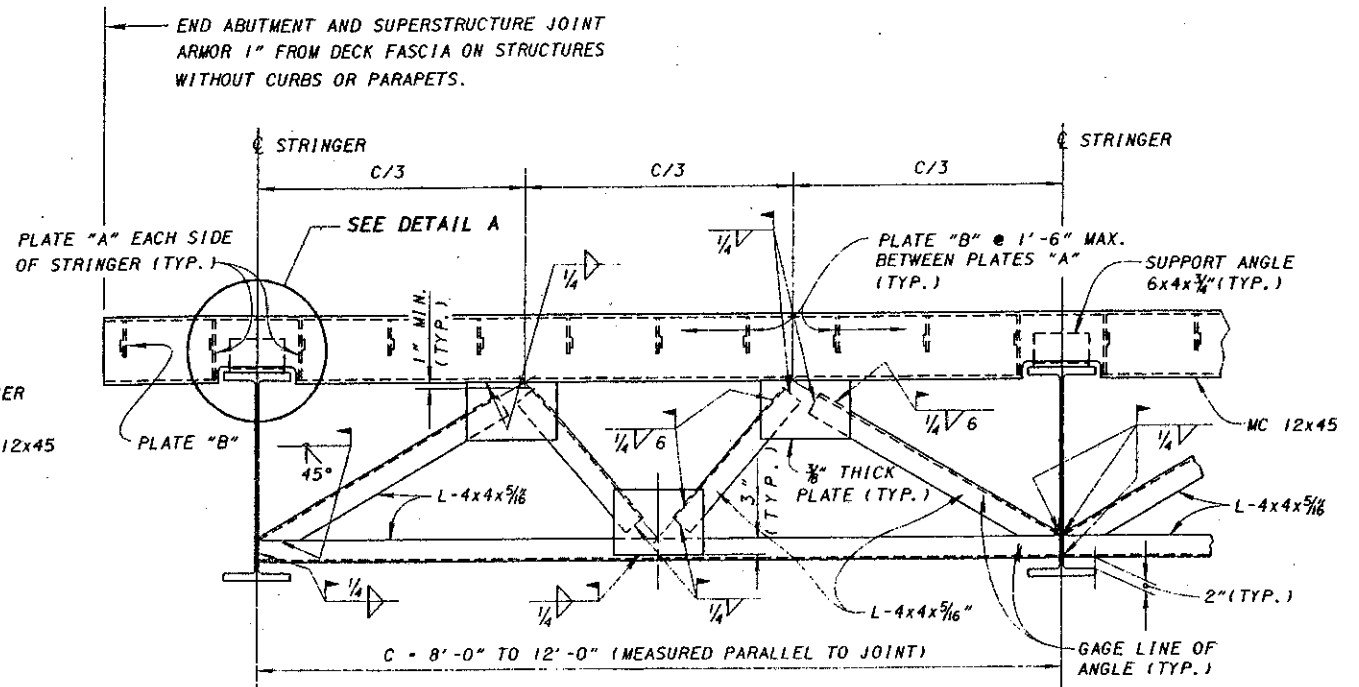
SECTION C-C

SEE SECTION B-B FOR ADDITIONAL DETAILS



END CROSSFRAME DETAILS
STEEL RETAINERS ARE NOT SHOWN

NOTE: THE WELDING SYMBOLS SHOWN AT RIGHT ARE TYPICAL FOR ALL SIMILAR LOCATIONS OF THIS END CROSSFRAME. ALSO, THE WELDED ATTACHMENT DETAILS AND TYPICAL DIMENSIONS SHOWN ARE TYPICAL FOR THE CROSSFRAMES DETAILED ABOVE.



NOTE: THE JOINT ARMOR SHOULD NOT BE PAINTED, EXCEPT FOR THE METALIZED SURFACES DAMAGED DURING CROSSFRAME INSTALLATION. THESE AREAS SHALL BE CLEANED AND PAINTED IN CONFORMANCE WITH THE STRUCTURE'S PAINT SYSTEM REQUIREMENTS. OVERSPRAY FROM PAINTING NEED NOT BE REMOVED. FOR REPAIR OF ALL OTHER METALIZED SURFACES SEE THE JOINT INSTALLATION NOTES ON SHEET 3/3.

DESIGN AGENCY	BUREAU OF BRIDGES AND STRUCTURAL DESIGN
DATE	9-1-81
STATE OF OHIO DEPARTMENT OF TRANSPORTATION	ENGINEER OF BRIDGES
DESIGNED	MPB/AJM
CHECKED	JS/RLD
REVIEWED	WTL/MPB
STANDARD	EXJ-2-81
REVISIONS	4-2-84 2-14-97
COMPRESSION SEAL EXPANSION JOINTS AT ABUTMENTS FOR STEEL STRINGER STRUCTURES	
	1/3