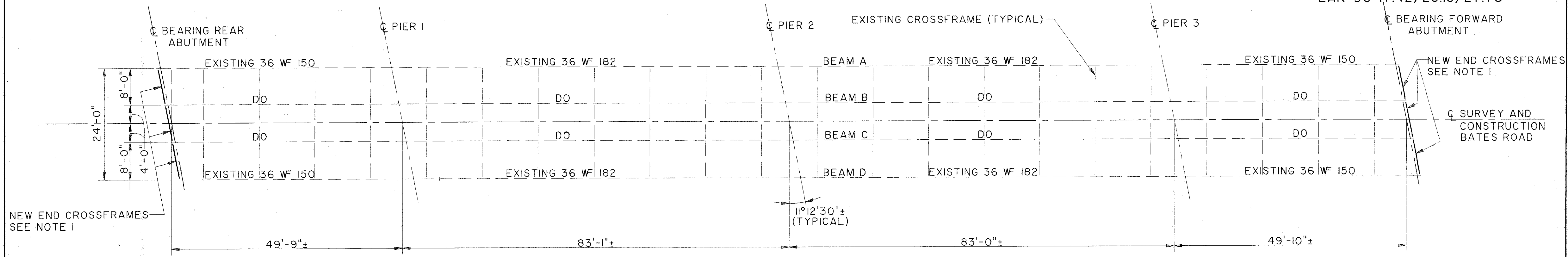
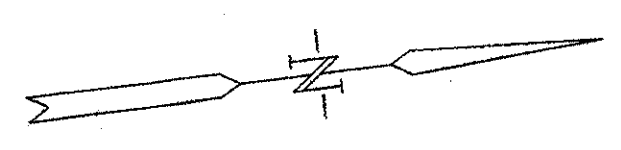
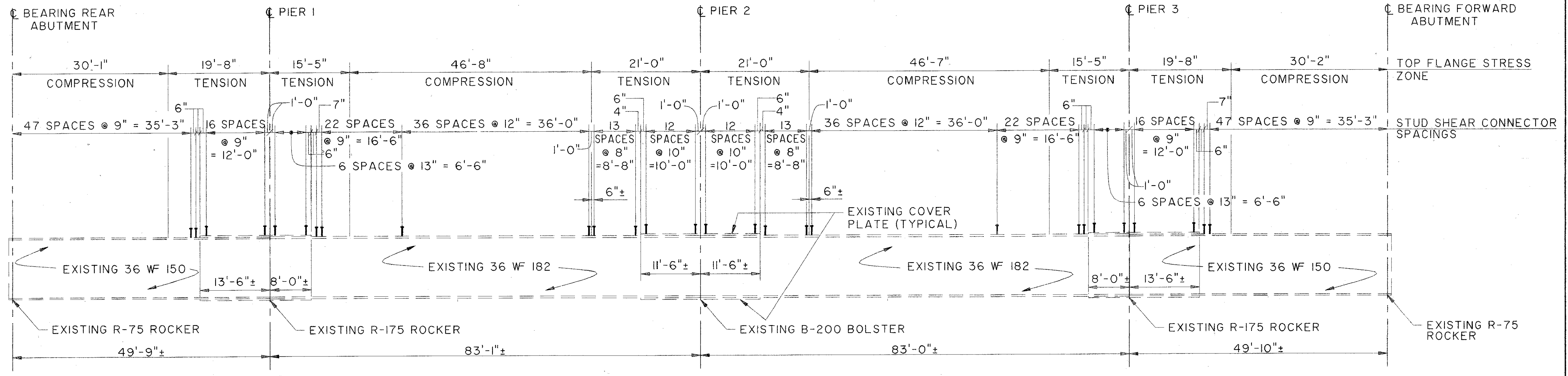


LAKE COUNTY
LAK-90-17.42/25.15/27.76



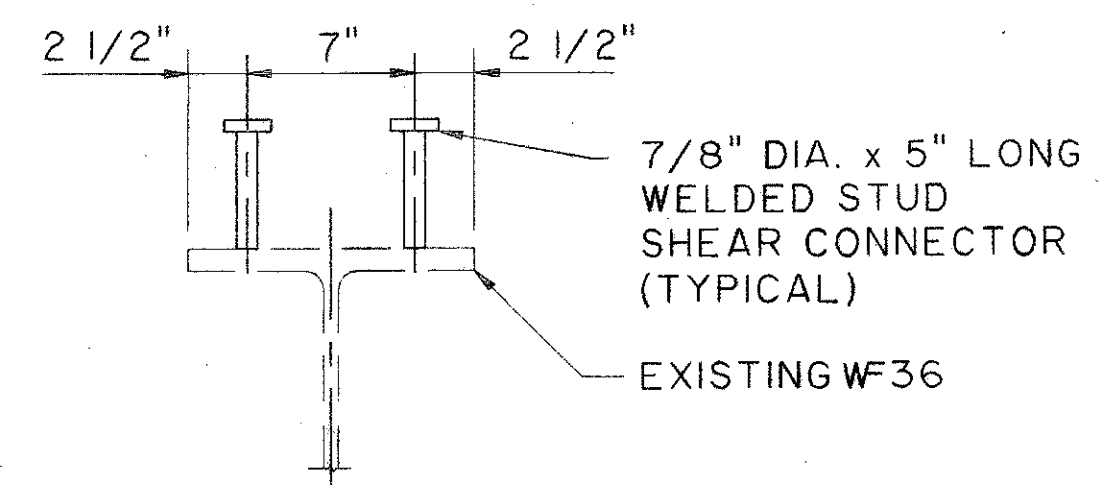
FRAMING PLAN



BEAM ELEVATION

NOTES

- FOR DETAILS OF END CROSSFRAMES AND NEW EXPANSION JOINTS, SEE STANDARD DRAWING SD-1-69 SHEET 1 OF 4 AND EXJ-2-81. EXCEPT A 4" SEAL SHALL BE USED.
- WELDED ATTACHMENT OF SUPPORTS FOR CONCRETE DECK FINISHING MACHINE MAY BE MADE TO AREAS OF THE STRINGER FLANGES DESIGNATED "COMPRESSION". ATTACHMENTS SHALL NOT BE MADE TO AREAS DESIGNATED "TENSION". FILLET WELDS TO THE COMPRESSION FLANGES SHALL BE NOT CLOSER THAN 1" FROM EDGE OF FLANGE, BE NOT MORE THAN 2" LONG, AND BE NOT SMALLER THAN THE MINIMUM SIZE REQUIRED BY AASHTO REQUIREMENTS.
- BEAM TOP FLANGE INCLUDING COVER PLATES AND STUD SHEAR CONNECTORS SHALL BE PAINTED PRIOR TO DECK CONCRETE PLACEMENT
- REMNANTS OF WELDS TO EXISTING STEEL SUPERSTRUCTURE RESULTING FROM THE REMOVAL OF SCUPPERS ETC., SHALL BE GROUND SMOOTH.



SHEAR STUD CONNECTION DETAIL

THE OSBORN ENGINEERING COMPANY 48/52					
CONSULTING ENGINEERS CLEVELAND, OHIO 44114					
FRAMING PLAN					
BRIDGE NO. LAK-90-2776 BATES ROAD OVER I-90					
LAKE COUNTY OHIO					
DESIGNED	DRAWN	TRACED	CHECKED	REVIEWED	DATE
LYH	BFG		JRS	GA	2/94

File Name: K:\A\1\04017\0185\STRUCT\01855732
 Plot Scale: 1/8" = 1'-0"
 Drawn By/Date: BFG / 02-17-94 (09:39)

BATES ROAD