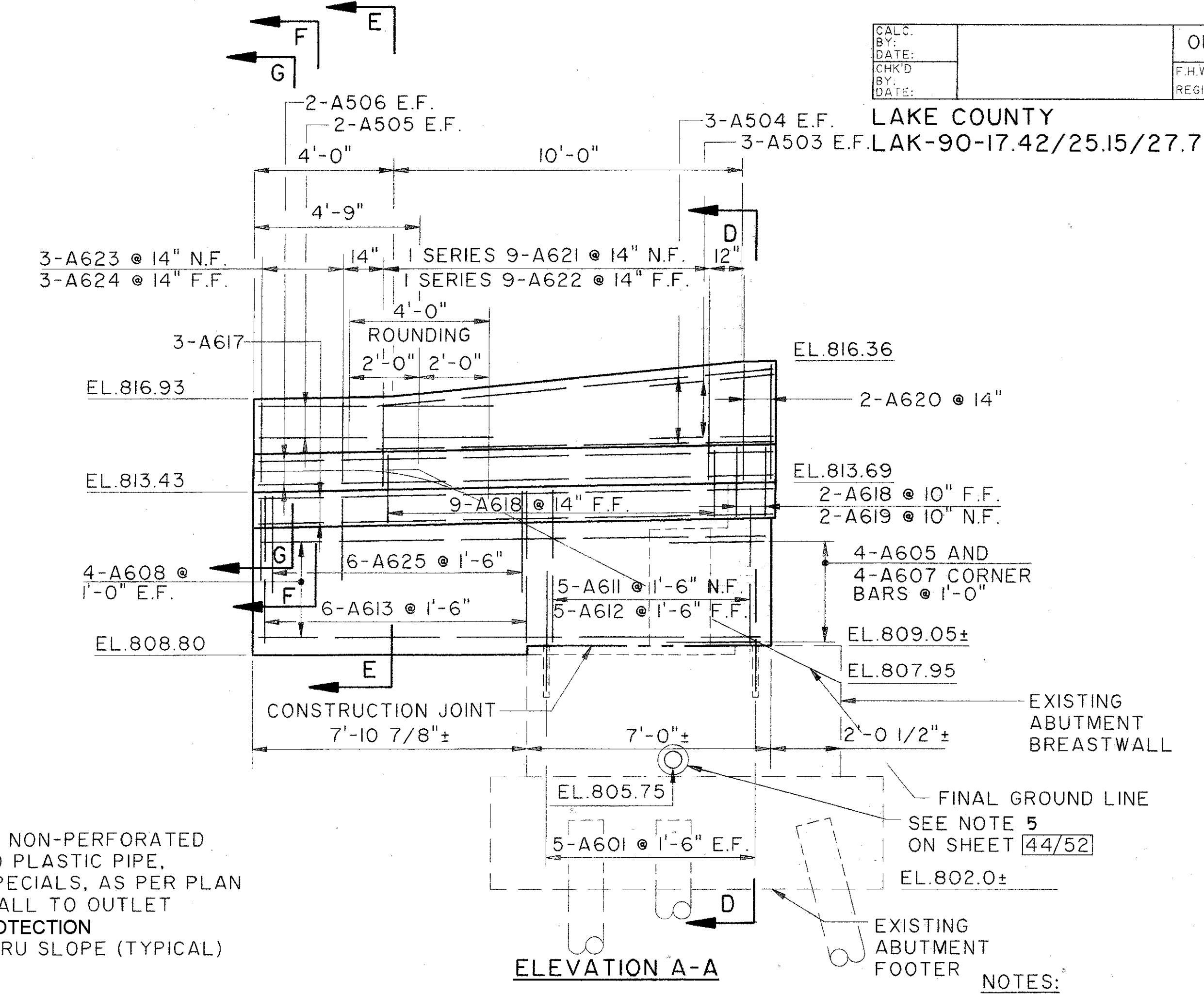
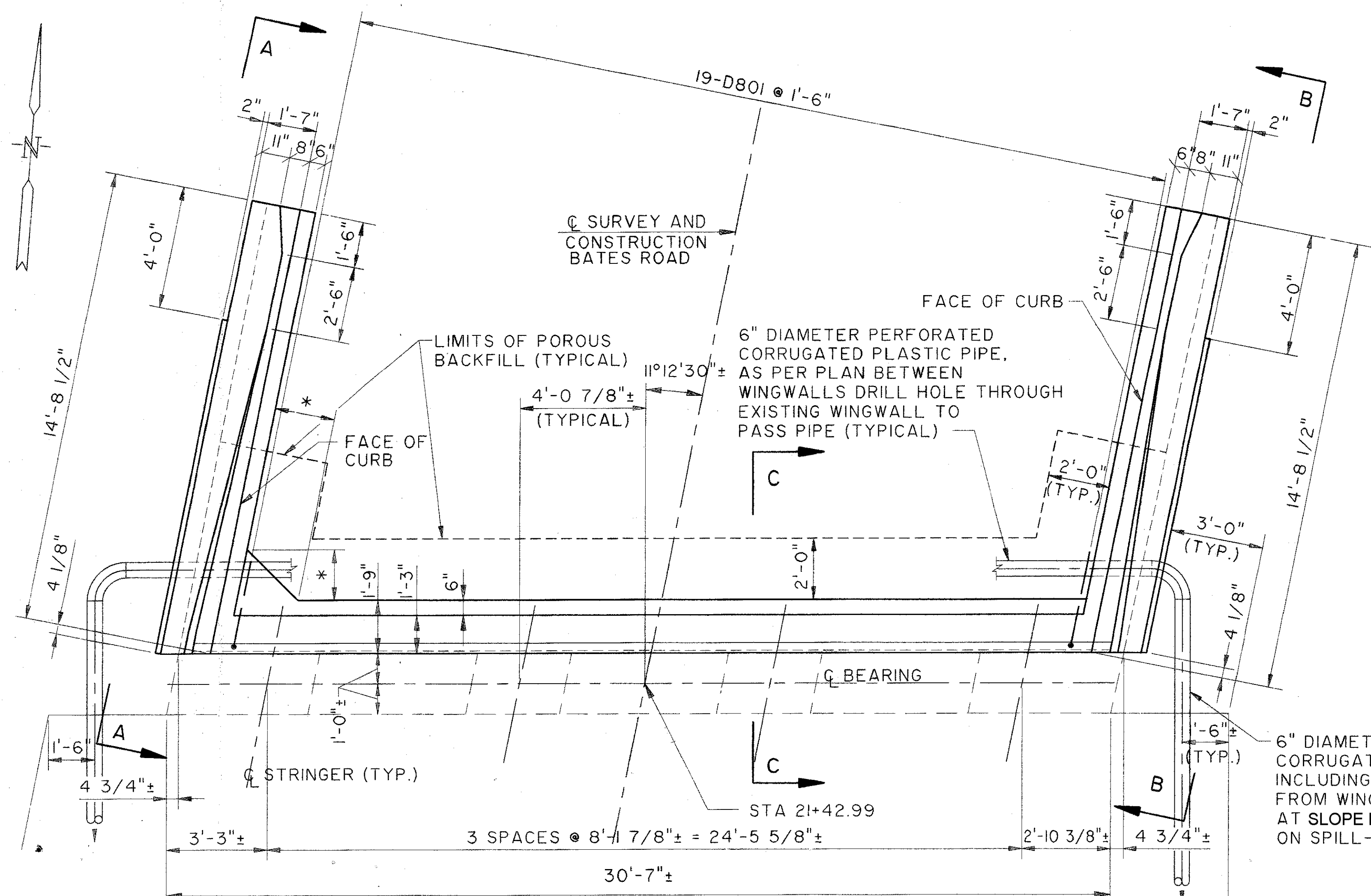
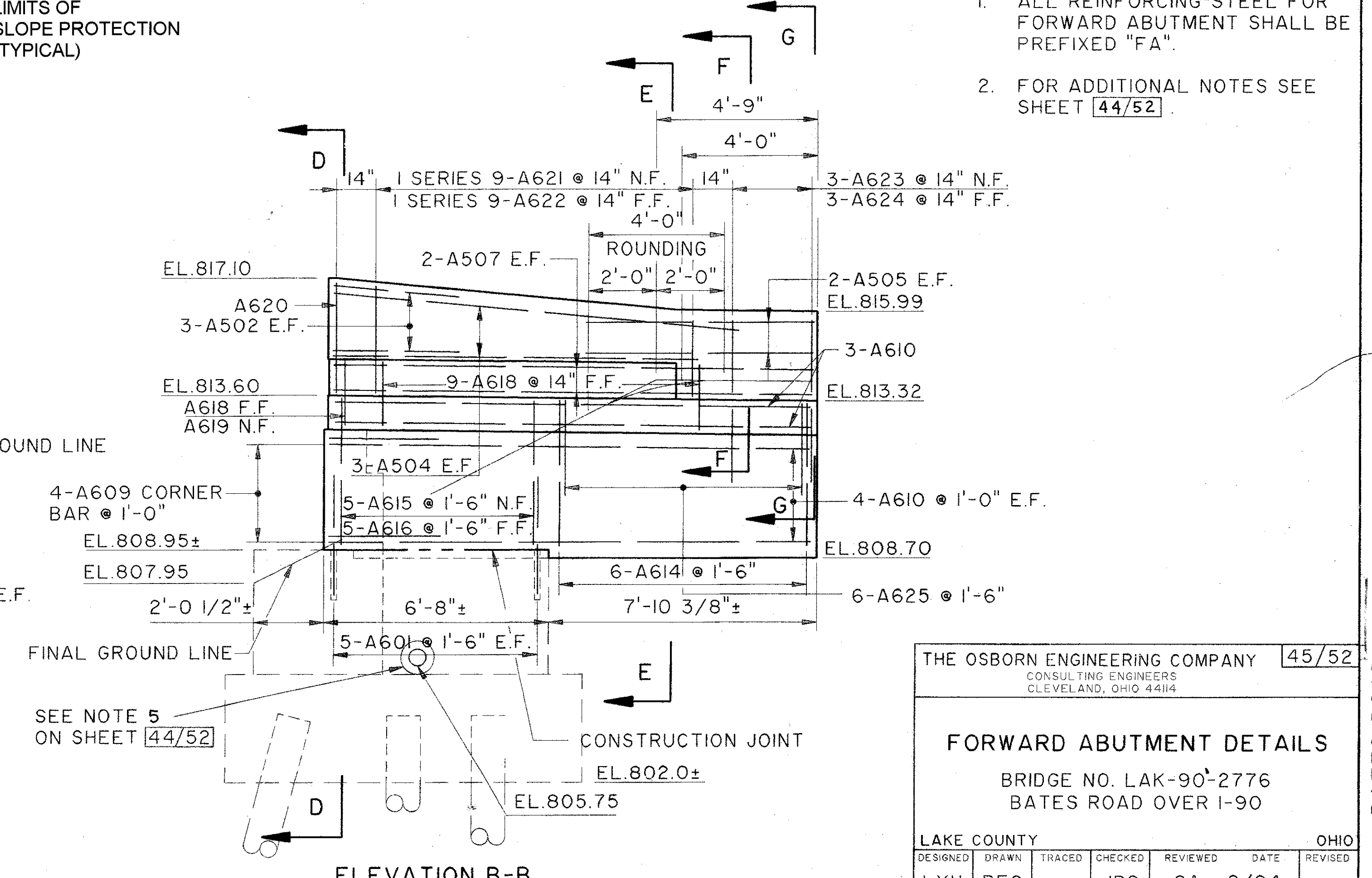
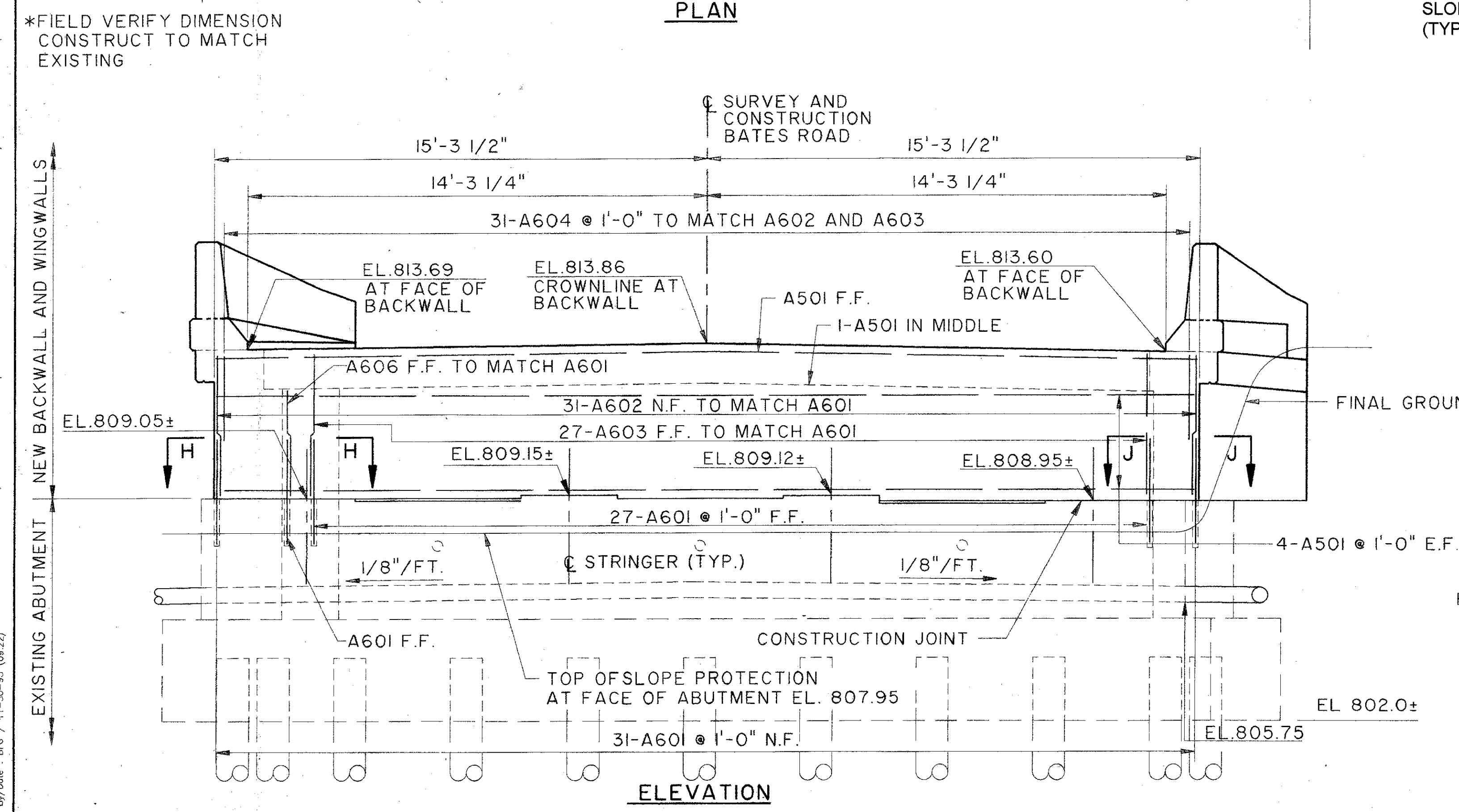


LAKE COUNTY  
LAK-90-17.42/25.15/27.76



- NOTES:**
- ALL REINFORCING STEEL FOR FORWARD ABUTMENT SHALL BE PREFIXED "FA".
  - FOR ADDITIONAL NOTES SEE SHEET 44/52.



THE OSBORN ENGINEERING COMPANY 45/52				
CONSULTING ENGINEERS CLEVELAND, OHIO 44114				
<b>FORWARD ABUTMENT DETAILS</b>				
BRIDGE NO. LAK-90-2776 BATES ROAD OVER I-90				
LAKE COUNTY OHIO				
DESIGNED	DRAWN	TRACED	CHECKED	REVIEWED
LYH	BFG		JRS	GA
			DATE	REVISED
			2/94	

File name: K:\A\1\0007\0185\STRUCT\01855759  
 Drawn By: Date: 11-30-93 (09:22)

BATES ROAD