

NOTE: THE EARTHWORK LIMITS SHOWN ARE APPROXIMATE. ACTUAL SLOPES SHALL CONFORM TO PLAN CROSS SECTIONS.

OHIO	79
F.H.W.A. REGION 5	92

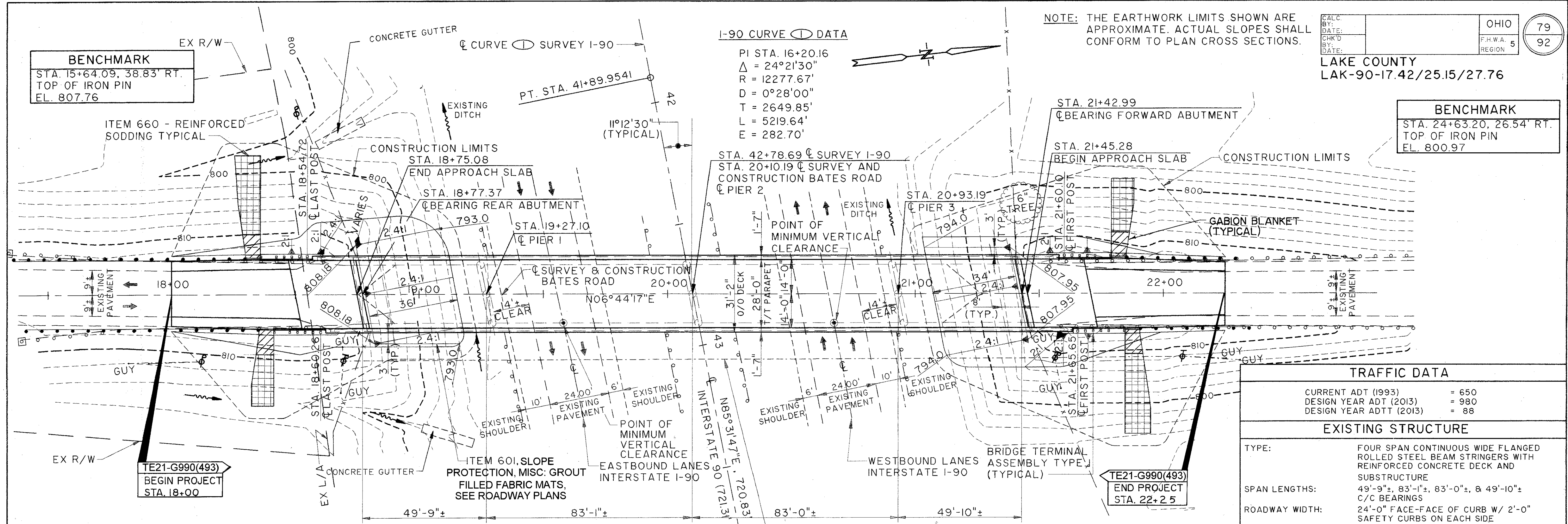
LAKE COUNTY  
LAK-90-17.42/25.15/27.76

**BENCHMARK**  
STA. 15+64.09, 38.83' RT.  
TOP OF IRON PIN  
EL. 807.76

**BENCHMARK**  
STA. 24+63.20, 26.54' RT.  
TOP OF IRON PIN  
EL. 800.97

I-90 CURVE DATA

PI STA. 16+20.16  
Δ = 24°21'30"  
R = 12277.67'  
D = 0°28'00"  
T = 2649.85'  
L = 5219.64'  
E = 282.70'



**LEGEND**

- ITEM 660, SODDING, REINFORCED
- GABION BLANKET

**PLAN**

**TRAFFIC DATA**

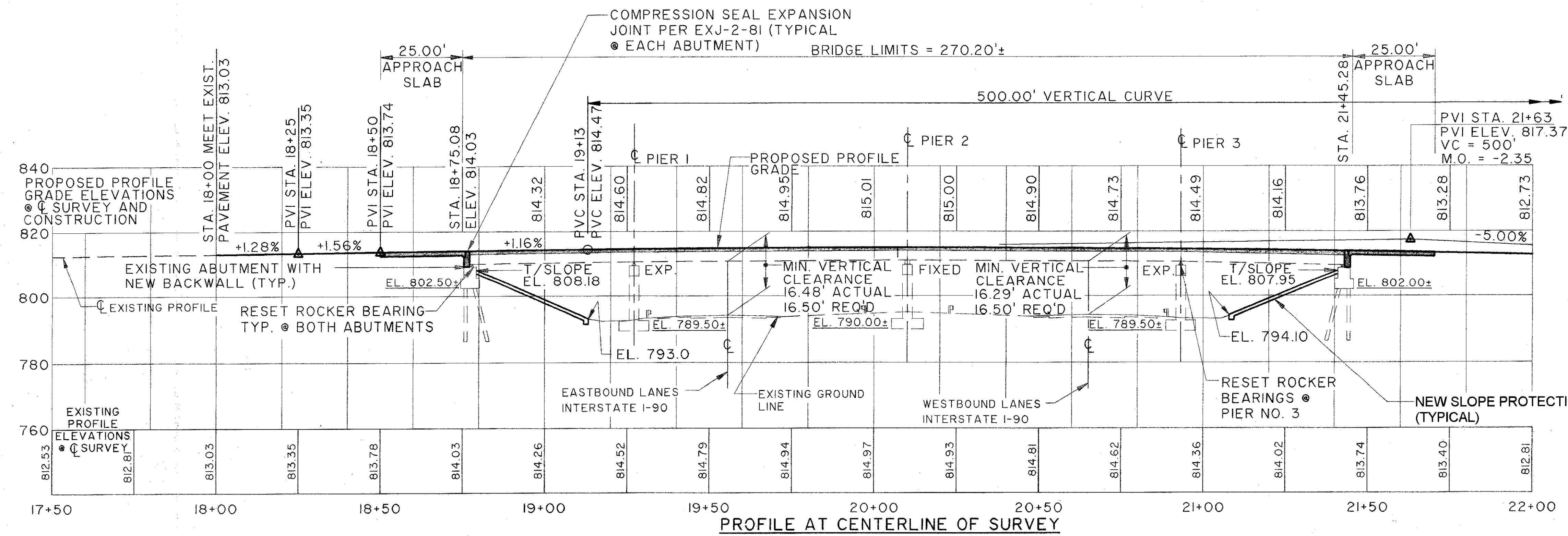
CURRENT ADT (1993)	= 650
DESIGN YEAR ADT (2013)	= 980
DESIGN YEAR ADTT (2013)	= 88

**EXISTING STRUCTURE**

TYPE: FOUR SPAN CONTINUOUS WIDE FLANGED ROLLED STEEL BEAM STRINGERS WITH REINFORCED CONCRETE DECK AND SUBSTRUCTURE  
 SPAN LENGTHS: 49'-9"±, 83'-1"±, 83'-0"±, & 49'-10"±  
 ROADWAY WIDTH: 24'-0" FACE-TO-FACE OF CURB W/ 2'-0" SAFETY CURBS ON EACH SIDE  
 LOADING: HS15-44  
 LOAD FREQUENCY: CF-130  
 SKEW: 11°-12'-30" ± RIGHT FORWARD  
 ALIGNMENT: TANGENT  
 WEARING SURFACE: 3/4"± DENSE CONCRETE  
 APPROACH SLABS: AS-1-54 (25'-0" LONG)  
 RAILINGS: CONCRETE PARAPET W/ PIPE RAILING  
 YEAR BUILT: 1958  
 STRUCTURE FILE #: 4305043

**PROPOSED STRUCTURE**

PROPOSED WORK: NEW COMPOSITE REINFORCED CONCRETE DECK, NEW ABUTMENT BACKWALLS, NEW WINGWALLS, RESET ROCKER BEARINGS, NEW COMPRESSION SEAL EXPANSION JOINTS, PATCH AND SEAL SUBSTRUCTURES, NEW APPROACH SLABS, PAINT STEEL  
 TYPE: FOUR SPAN CONTINUOUS COMPOSITE WIDE FLANGED ROLLED STEEL BEAM STRINGERS WITH NEW REINFORCED CONCRETE DECK AND MODIFIED SUBSTRUCTURE  
 SPAN LENGTHS: 49'-9"±, 83'-1"±, 83'-0"±, & 49'-10"±  
 ROADWAY WIDTH: 28'-0" TOE-TOE OF CONCRETE PARAPET  
 LOADINGS: HS20-44 CASE II AND ALTERNATE MILITARY LOADS  
 SKEW: 11°-12'-30" ± RIGHT FORWARD  
 ALIGNMENT: TANGENT  
 WEARING SURFACE: MONOLITHIC CONCRETE  
 APPROACH SLABS: AS-1-81 (25'-0" LONG)  
 CROWN: 3/16" / FOOT  
 RAILINGS: CONCRETE PARAPET W/ CHAIN LINK FENCE



**PROFILE AT CENTERLINE OF SURVEY**

THE OSBORN ENGINEERING COMPANY 39/52  
CONSULTING ENGINEERS  
CLEVELAND, OHIO 44114

**SITE PLAN**  
BRIDGE NO. LAK-90-2776  
BATES ROAD OVER I-90  
LAKE COUNTY STATION 18+75.08 TO  
STATION 21+45.28

PRESENT TOPOGRAPHY		PROPOSED WORK	
SURVEYED	DRAWN	CHECKED	REVIEWED
HIMEBAUGH & ASSOCIATES	HIMEBAUGH & ASSOCIATES	LYH	ZN
		JRS	GA
		2/94	

File name: K:\proj\0007\0185\STRUCT\0185S101  
 Drawn By: Date: 02-07-94 (16)

BATES ROAD