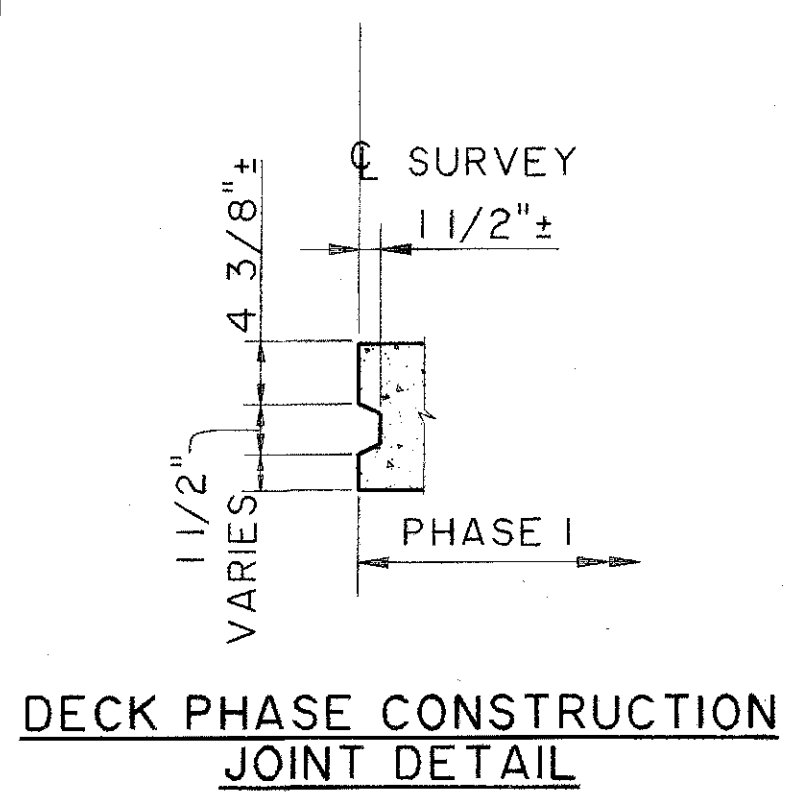
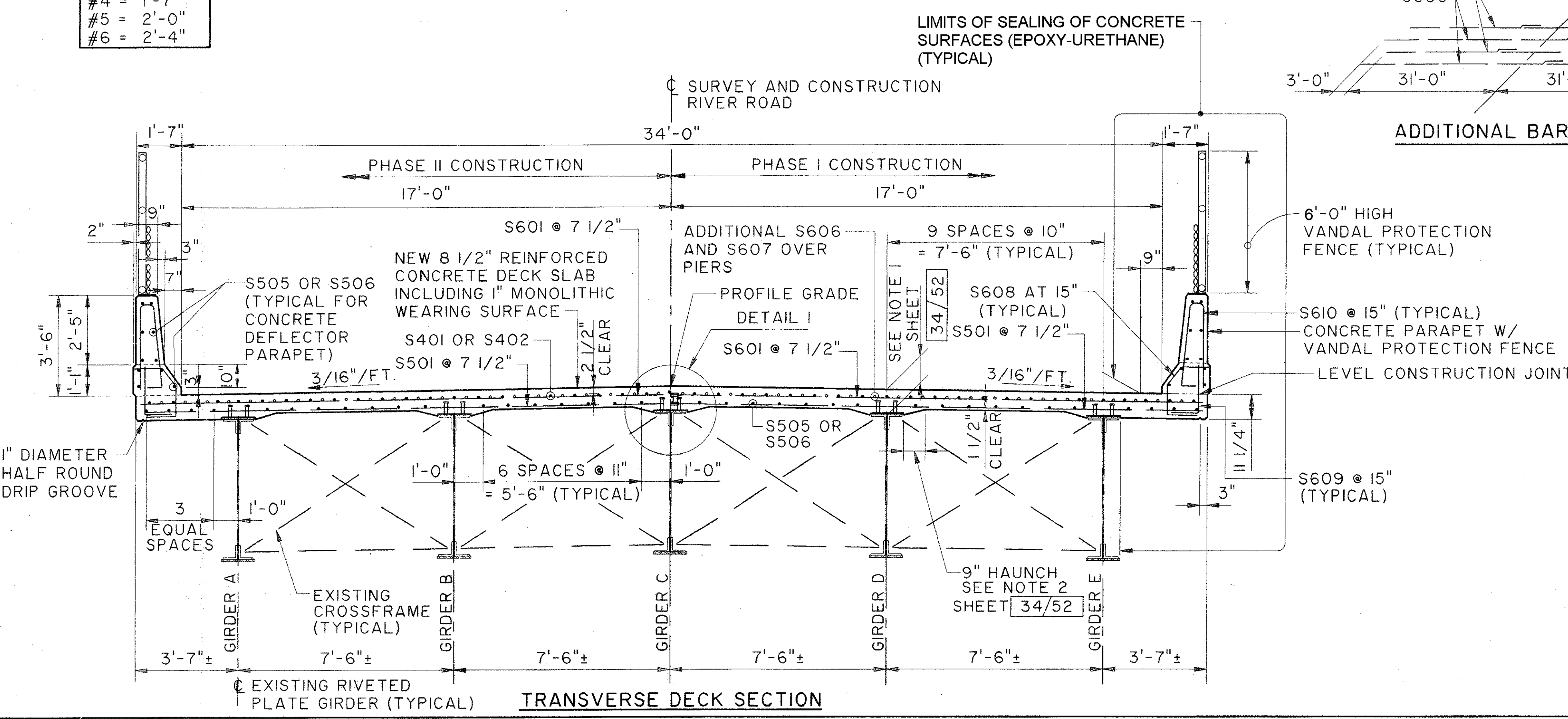
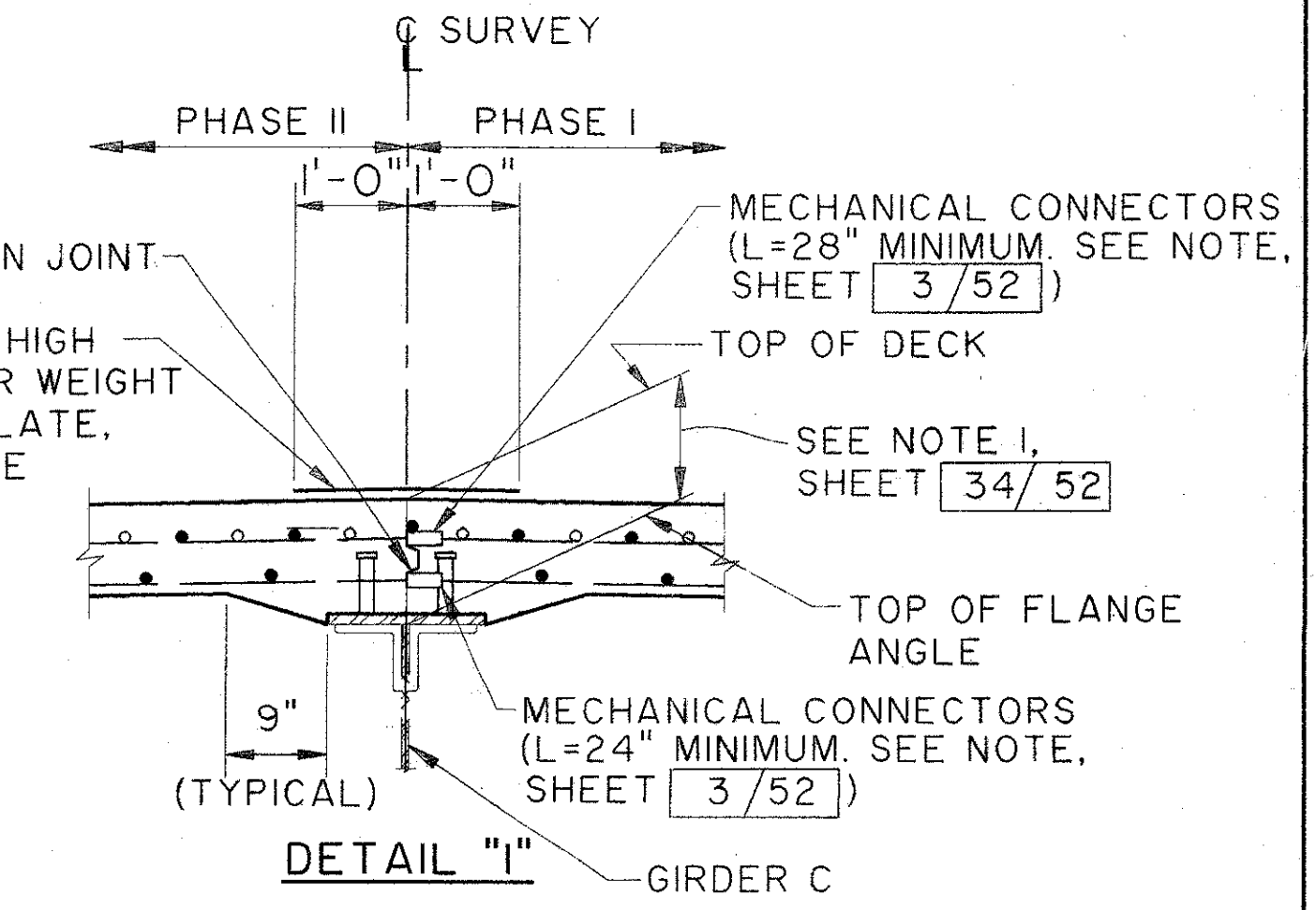
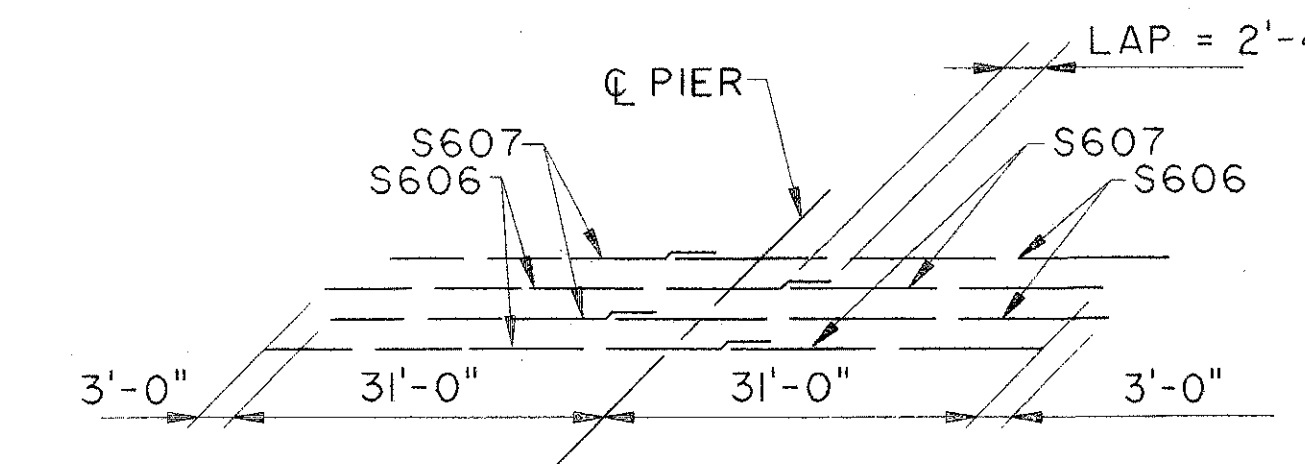


LAP LENGTH:

#4	= 1'-7"
#5	= 2'-0"
#6	= 2'-4"



FOR NOTES SEE SHEET 34/52

THE OSBORN ENGINEERING COMPANY 33/52
 CONSULTING ENGINEERS
 CLEVELAND, OHIO 44114

DECK PLAN AND TRANSVERSE DECK SECTION
 BRIDGE NO. LAK-90-2515
 RIVER ROAD OVER I-90

DESIGNED	DRAWN	TRACED	CHECKED	REVIEWED	DATE	REVISED
LYH	BFG		JRS	GA	2/94	ODOT 52499

LAKE COUNTY OHIO
 DESIGNED BY: DATE: OHIO 73
 DRAWN BY: DATE: F.H.W.A. REGION 5 92
 TRACED BY: DATE:
 CHECKED BY: DATE:
 REVIEWED BY: DATE:

Reference: K:\N\1\0007\0186\STRUCT\0186S523
 Plot Scale: 1" = 10'
 Drawn By/Date: Bfc / 05-02-94 (16:1)

RIVER ROAD