

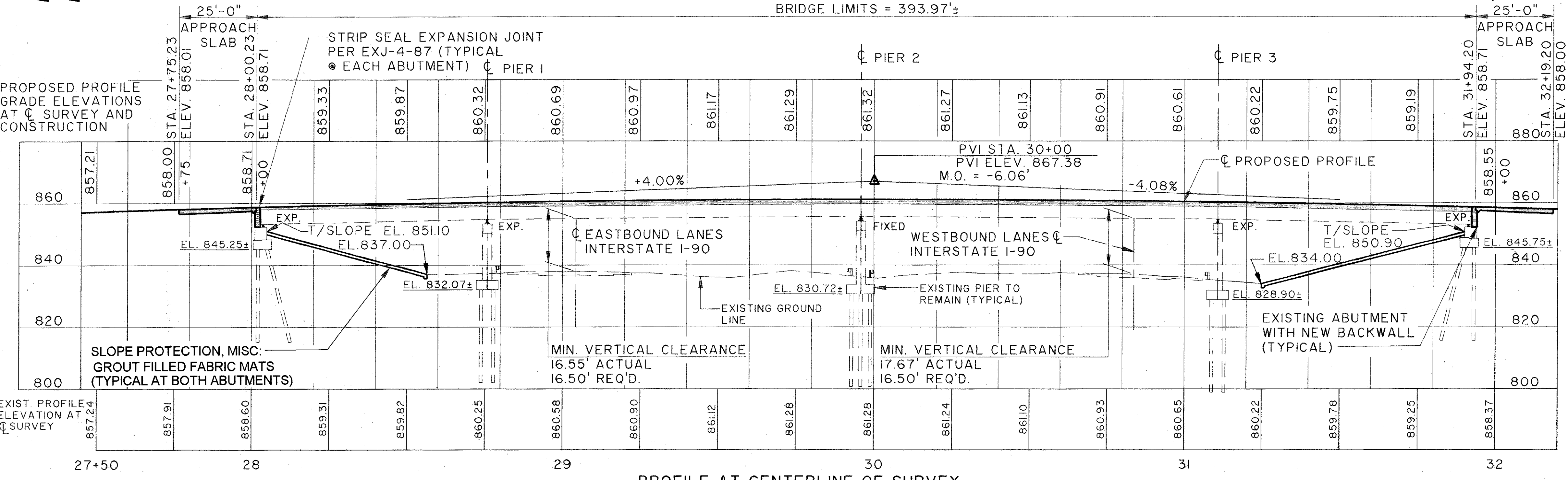
CURVE DATA	
P.I. STA.	31+35.25
Δ	$15^{\circ}44'30''$ RT.
D_c	$2^{\circ}00'00''$
R	2864.79'
L_s	150.00'
ϕ_s	$1^{\circ}30'00''$
L_t	100.00'
S_t	50.00'
L_c	637.08'
T_s	471.08'
E_s	27.58'
e_{max}	0.047 FT./FT.

- LEGEND**
- [Hatched Box] ITEM 660, SODDING, REINFORCED
 - [Cross-hatched Box] TEMPORARY PAVEMENT, CLASS B, AS PER PLAN. FOR LIMITS SEE MAINTENANCE OF TRAFFIC PLANS
 - [Diagonal Hatched Box] GABION BLANKET

TRAFFIC DATA	
CURRENT ADT (1993)	= 2600
DESIGN YEAR ADT (2013)	= 4160
DESIGN YEAR ADTT (2013)	= 125

EXISTING STRUCTURE	
TYPE:	FOUR SPAN CONTINUOUS RIVETED PLATE GIRDERS WITH REINFORCED CONCRETE DECK AND SUBSTRUCTURES
SPAN LENGTHS:	67.70', 117.44', 117.19', 8 84.88' ± C/C BEARINGS MEASURED ALONG REFERENCE CHORD
ROADWAY WIDTH:	30'-0" FACE-TO-FACE OF CURB W/ 2'-0" SAFETY CURBS ON EACH SIDE
RAILINGS:	CONCRETE PARAPET W/ PIPE RAILING
SKEW:	45°-42'-28" ± LEFT FORWARD WITH RESPECT TO REFERENCE LINE
LOADING:	HS15-44
LOAD FREQUENCY:	CF-400
WEARING SURFACE:	DENSE CONCRETE
APPROACH SLABS:	AS-I-54 (25'-0" LONG)
ALIGNMENT:	2° CURVE (RIGHT)
SUPERELEVATION:	0.047' /' MAXIMUM
YEAR BUILT:	1959
STRUCTURE FILE #:	4304683

PROPOSED STRUCTURE	
PROPOSED WORK:	NEW COMPOSITE REINFORCED CONCRETE DECK, NEW ABUTMENT BACKWALLS, NEW WINGWALLS, RESET ROCKER BEARINGS, PAINT STEEL, NEW STRIP SEAL EXPANSION JOINTS, SEAL SUBSTRUCTURES, NEW APPROACH SLABS AND MINOR PATCHING.
TYPE:	FOUR SPAN CONTINUOUS COMPOSITE RIVETED PLATE GIRDERS WITH REINFORCED CONCRETE DECK AND SUBSTRUCTURES.
SPAN LENGTHS:	67.70', 117.44', 117.19', 8 84.88' ± C/C BEARINGS MEASURED ALONG REFERENCE LINE
ROADWAY WIDTH:	34'-0" TOE-TOE OF CONCRETE PARAPET
RAILINGS:	CONCRETE PARAPET W/ CHAIN LINK FENCE
LOADINGS:	HS20-44 CASE II AND ALTERNATE MILITARY LOADS
SKEW:	45°-42'-28" ± LEFT FORWARD WITH RESPECT TO REFERENCE LINE
WEARING SURFACE:	MONOLITHIC CONCRETE
APPROACH SLABS:	AS-I-81 (25'-0" LONG)
ALIGNMENT:	2° CURVE (RIGHT)
SUPERELEVATION:	0.047' /' MAXIMUM



THE OSBORN ENGINEERING COMPANY 4/52
CONSULTING ENGINEERS
CLEVELAND, OHIO 44114

SITE PLAN
BRIDGE NO. LAK-90-1742
S.R. 86 OVER I-90
LAKE COUNTY STATION 28+00.23 TO
STATION 31+94.20

LAKE COUNTY		OHIO	
SURVEYED	DRAWN	DESIGNED	PROPOSED WORK
HIMEBAUGH & ASSOCIATES	HIMEBAUGH & ASSOCIATES	LYH ZN	JRS GA
		CHECKED	REVIEWED
			DATE
			2/94

Files: K:\A\1\0007\0185\STRUCT\0185206
Plot Scale: 1"=20'
Drawn By: Dale T. Barr / 02-18-94 (10)

S.R. 86