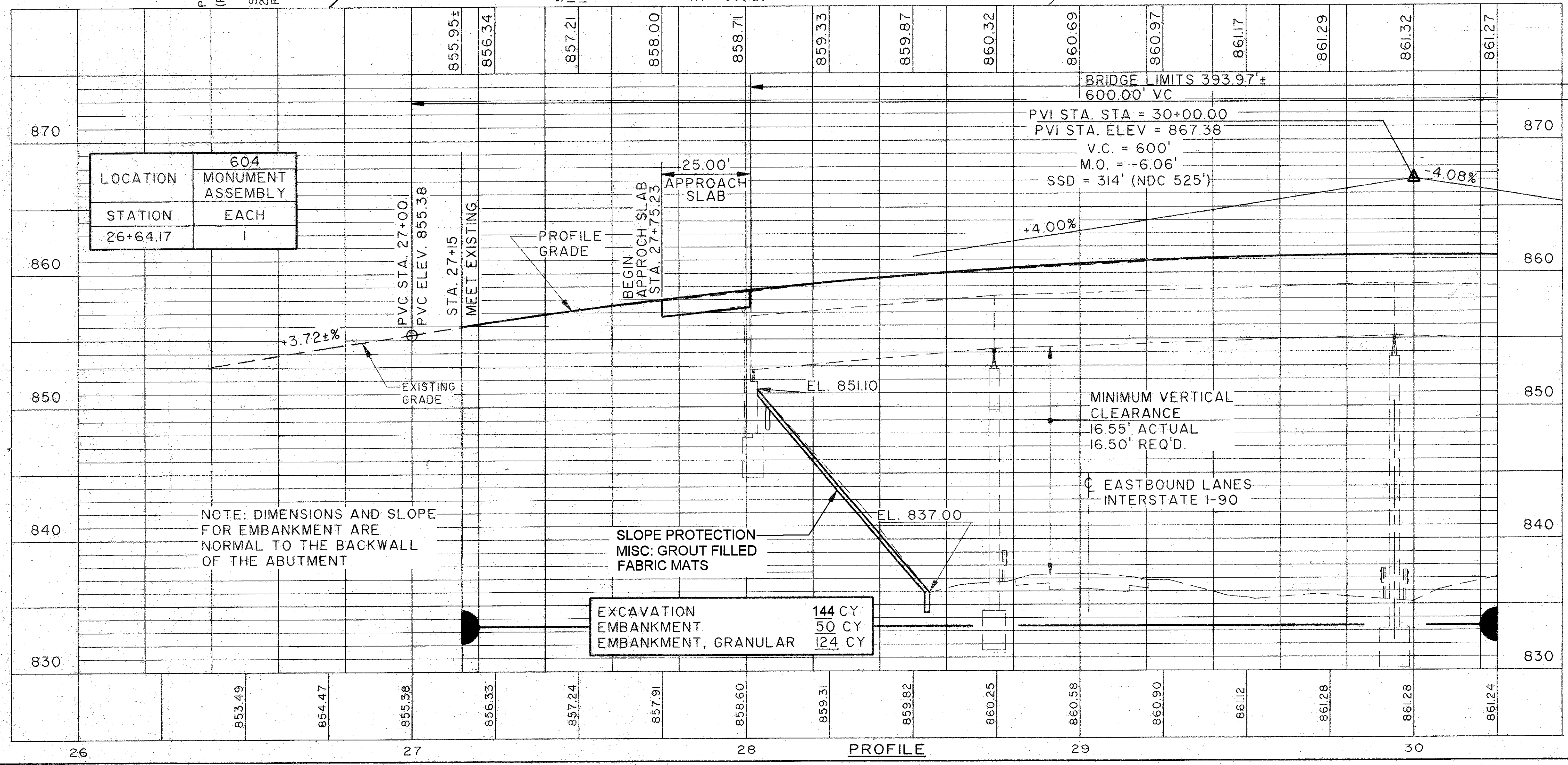


**LEGEND**

- ITEM 660, SODDING, REINFORCED
- TEMPORARY PAVEMENT, CLASS B, AS PER PLAN, FOR LIMITS SEE MAINTENANCE OF TRAFFIC PLANS
- PAVEMENT PLANING AND RESURFACING
- ITEM 838, GABION, WITH ADDITIONAL COATING



FOR ESTIMATED QUANTITIES SEE SHEET 23

EXISTING STRUCTURE	
TYPE:	FOUR SPAN CONTINUOUS RIVETED PLATE GIRDERS WITH REINFORCED CONCRETE DECK AND SUBSTRUCTURES
SPAN LENGTHS:	67.70±, 117.44±, 117.19±, & 84.88± C/C BEARINGS MEASURED ALONG REFERENCE CHORD
ROADWAY WIDTH:	30'-0" FACE-TO-FACE OF CURB W/ 2'-0" SAFETY CURBS ON EACH SIDE
RAILINGS:	CONCRETE PARAPET W/ PIPE RAILING
SKREW:	45°-42'-28"± LEFT FORWARD WITH RESPECT TO REFERENCE LINE
LOADING:	HS15-44
LOAD FREQUENCY:	CF-400
WEARING SURFACE:	DENSE CONCRETE
APPROACH SLABS:	AS-1-54 (25'-0" LONG)
ALIGNMENT:	2° CURVE (RIGHT)
SUPERELEVATION:	0.047' /' MAXIMUM
YEAR BUILT:	1959
STRUCTURE FILE #:	4304683
PROPOSED STRUCTURE	
PROPOSED WORK:	NEW COMPOSITE REINFORCED CONCRETE DECK, NEW ABUTMENT BACKWALLS, NEW WINGWALLS, RESET ROCKER BEARINGS, NEW STRIP SEAL EXPANSION JOINTS, PATCH AND SEAL SUBSTRUCTURES, NEW APPROACH SLABS.
TYPE:	FOUR SPAN CONTINUOUS COMPOSIT RIVETED PLATE GIRDERS WITH REINFORCED CONCRETE DECK AND SUBSTRUCTURES.
SPAN LENGTHS:	67.70±, 117.44±, 117.19±, & 84.88± C/C BEARINGS MEASURED ALONG REFERENCE LINE
ROADWAY WIDTH:	34'-0" TOE-TOE OF CONCRETE PARAPET
RAILINGS:	CONCRETE PARAPET W/ CHAIN LINK FENCE
LOADINGS:	HS20-44 CASE II AND ALTERNATE MILITARY LOADS
SKREW:	45°-42'-28"± LEFT FORWARD WITH RESPECT TO REFERENCE LINE
WEARING SURFACE:	1" MONOLITHIC CONCRETE
APPROACH SLABS:	AS-1-81 (25'-0" LONG)
ALIGNMENT:	2° CURVE (RIGHT)
SUPERELEVATION:	0.047' /' MAXIMUM

PLAN AND PROFILE STA. 26+00 TO STA. 30+25

Reference: K:\M1\0001\0185\STRUCT\DRSS04  
 File: Sta. 26+00 to 30+25  
 Date: 05/20/94 (10)

S.R. 86