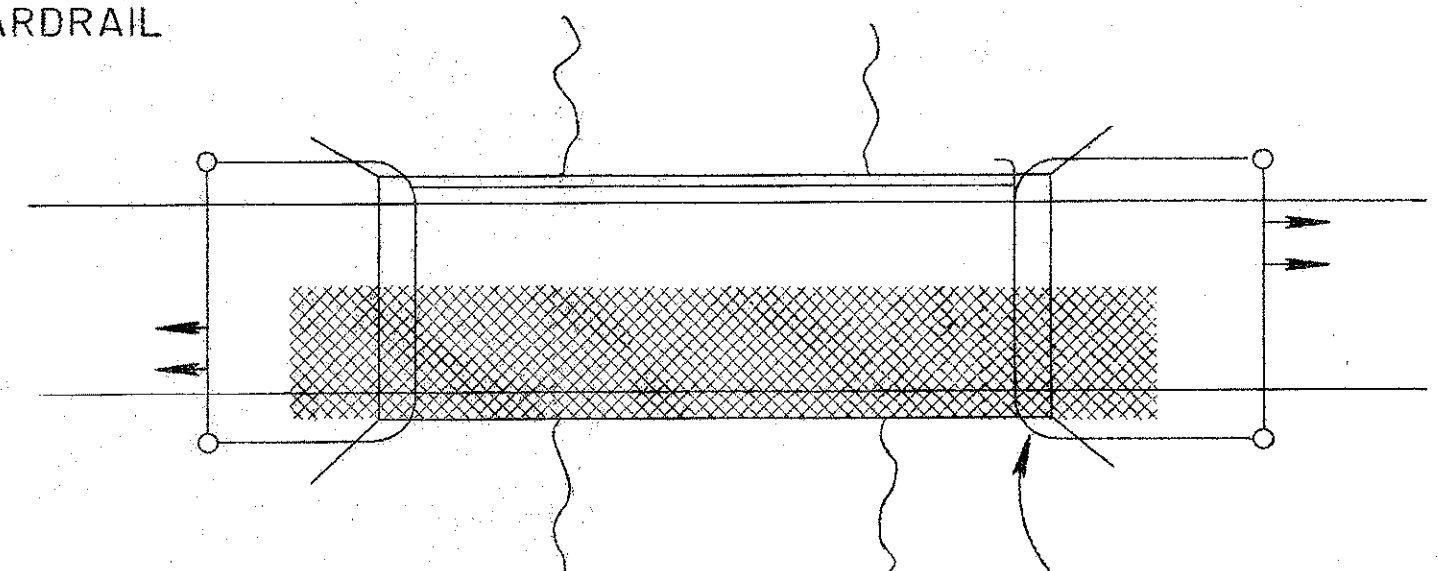
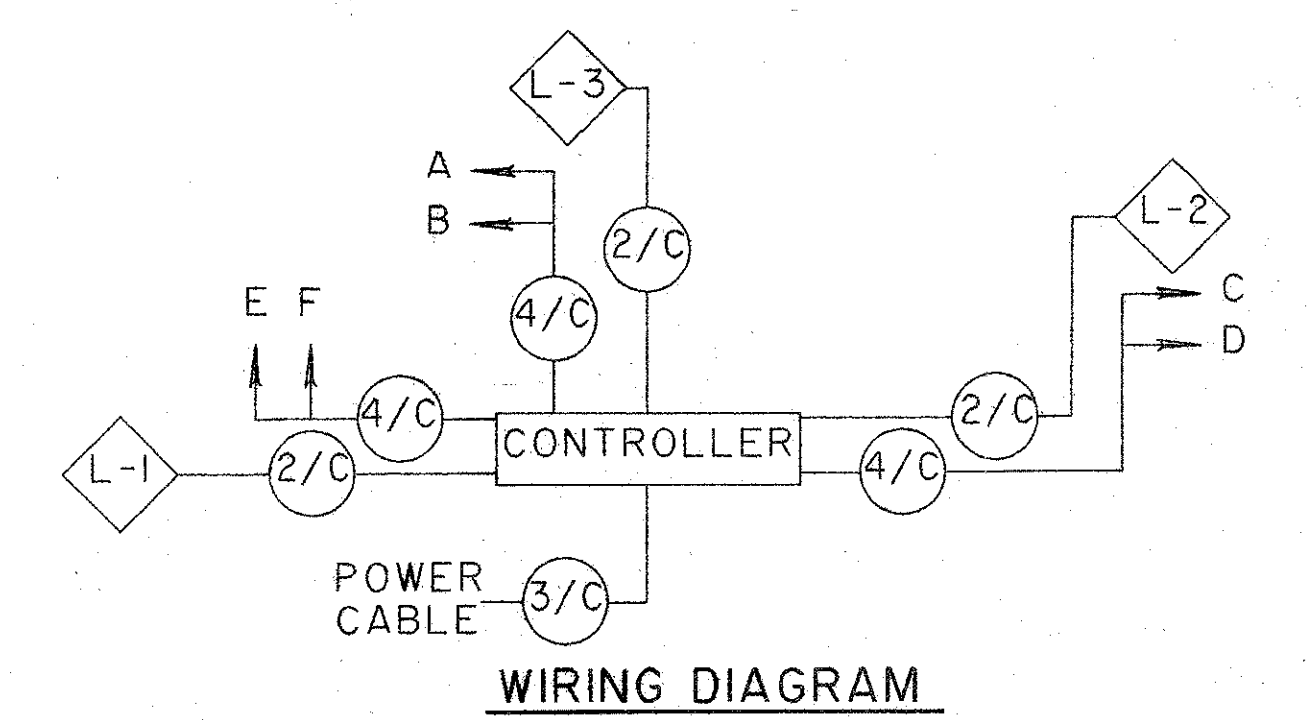


NOTE: 5/C SIGNAL CABLE MAY BE USED IN LIEU OF 4/C DEPENDING ON AVAILABILITY

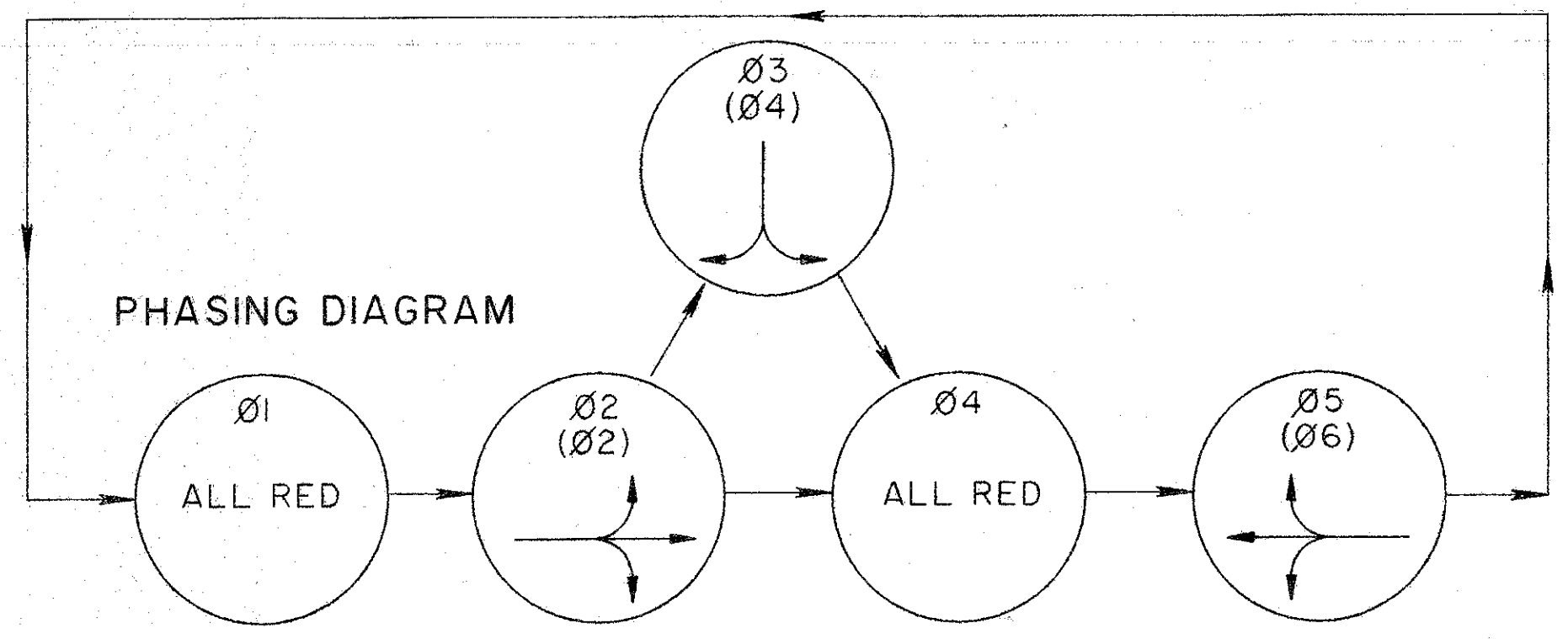


SIGNAL DISPLAY CHART

SIGNAL HEAD	Ø1	Ø2	Ø3	Ø4	Ø5	FLASH
	CLEAR	R/W CLEAR	R/W CLEAR	CLEAR	R/W CLEAR	
A	R	G Y R	R R R	R	R R R	R
B	R	G Y R	R R R	R	R R R	R
C	R	R R R	R R R	R	G Y R	R
D	R	R R R	R R R	R	G Y R	R
E	R	R R R	G Y R	R	R R R	R
F	R	R R R	G Y R	R	R R R	R

NOTE: SIGNAL HEADS E & F SHALL HAVE TUNNEL VISORS

ALTERNATE CABLE ROUTING



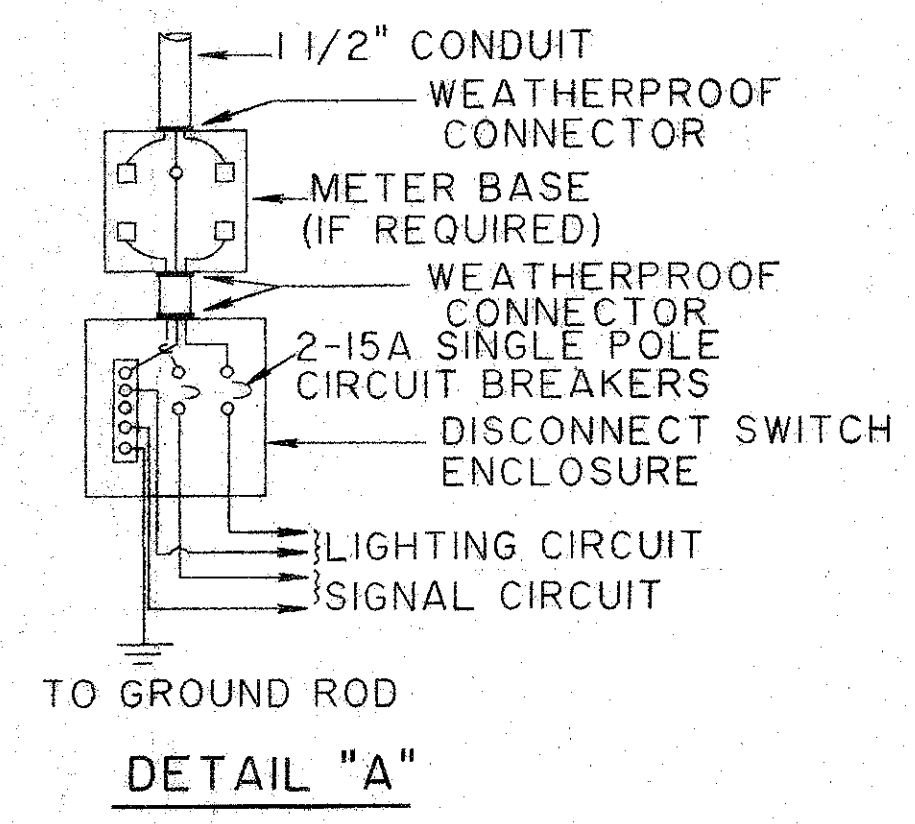
Ø2, Ø3, AND Ø5 GREEN SHALL BE ACTUATED BY DETECTORS AS SHOWN ON SHEET 16. Ø1 & Ø4 ARE DUMMY PHASES TO TIME ALL RED INTERVAL. TIMING INITIALIZES ON PHASE ONE. NEMA PHASE NUMBERING IN PARENTHESES.

SIGNAL TIMING CHART

INTERVAL	PHASE				
	Ø1	Ø2	Ø3	Ø4	Ø5
MIN. GREEN	10	8			10
EXTENSION		4	2		4
GAP		3			3
MAX. GREEN	20	12			20
YELLOW		3	3		3
ALL RED	32	3	1	32	1
MEMORY		LOCK	LOCK	LOCK	LOCK
RECALL		ON	OFF		ON

NOTE: SIGNAL TIMING MAY BE SUBJECT TO CHANGE AS DIRECTED BY THE ENGINEER.

DETAILS FOR ACTUATED SIGNALIZED CLOSING 1 LANE OF A 2 LANE HIGHWAY (3 PHASE)



File: 100070186/STRUCT/01855066  
 Drawn By: JRG / 05-17-94 (13:32)