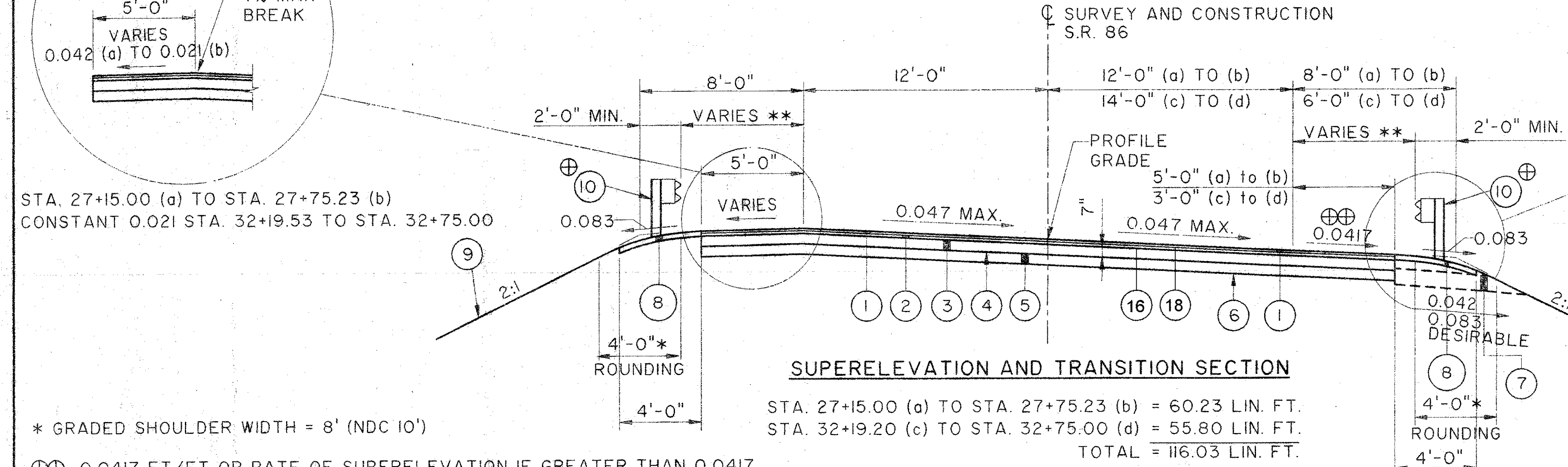
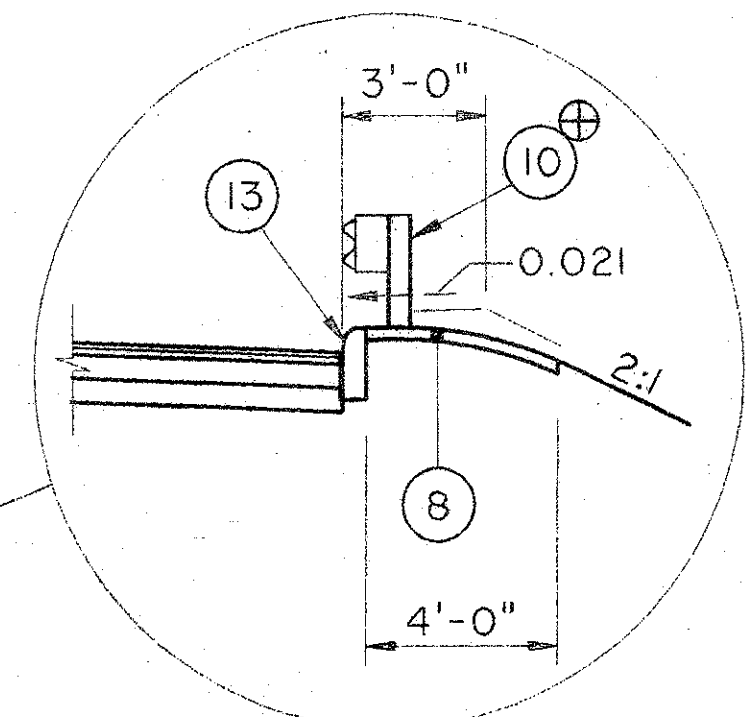
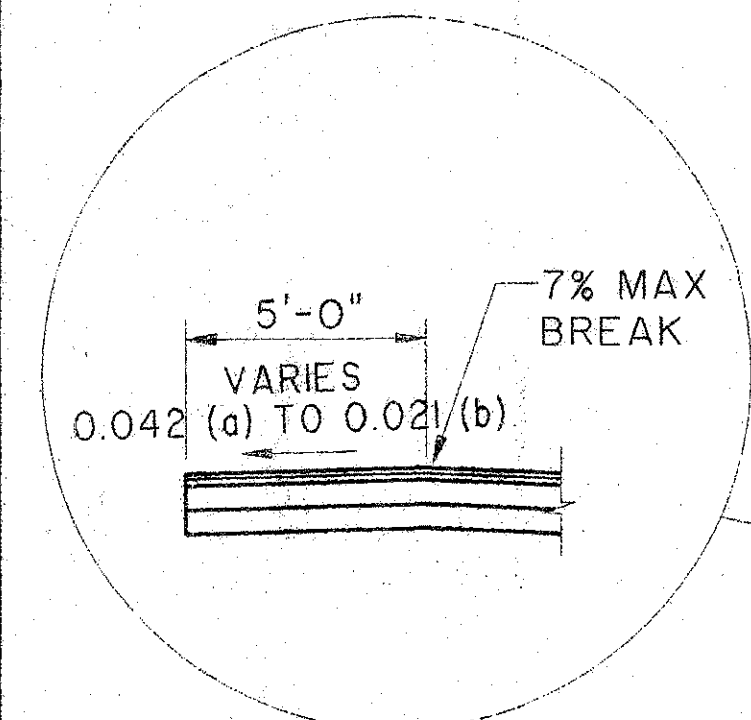


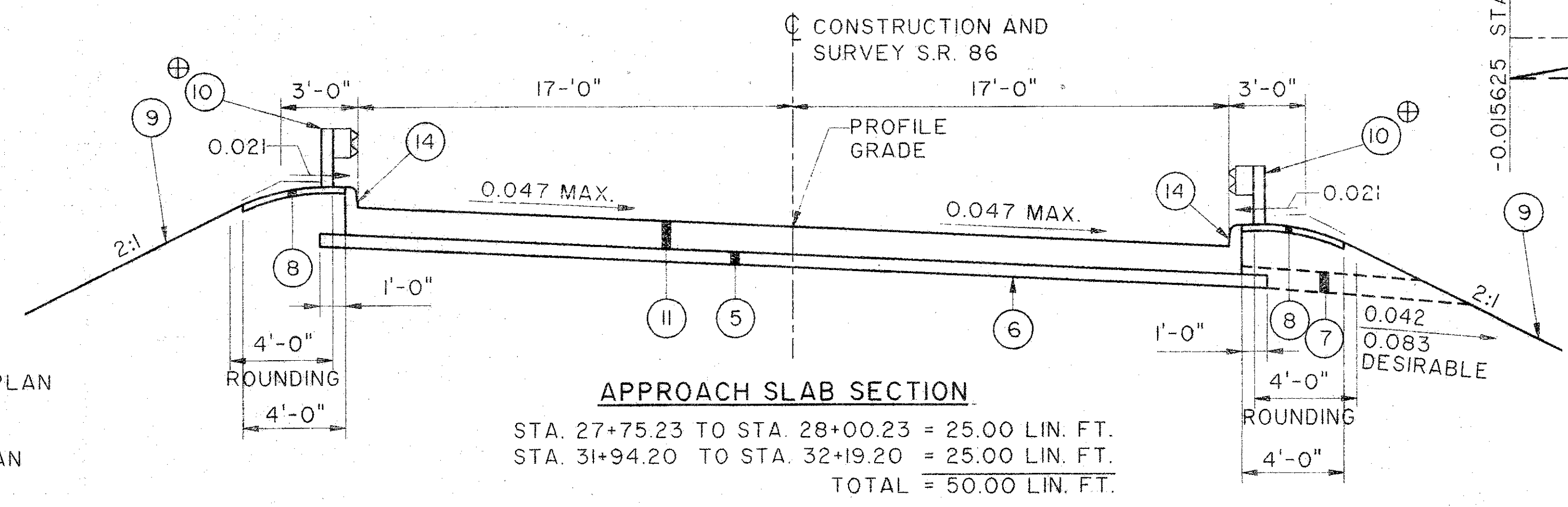
# TYPICAL SECTIONS TYPE 448 ON 301

LAKE COUNTY  
LAK-90-17.42/25.15/27.76

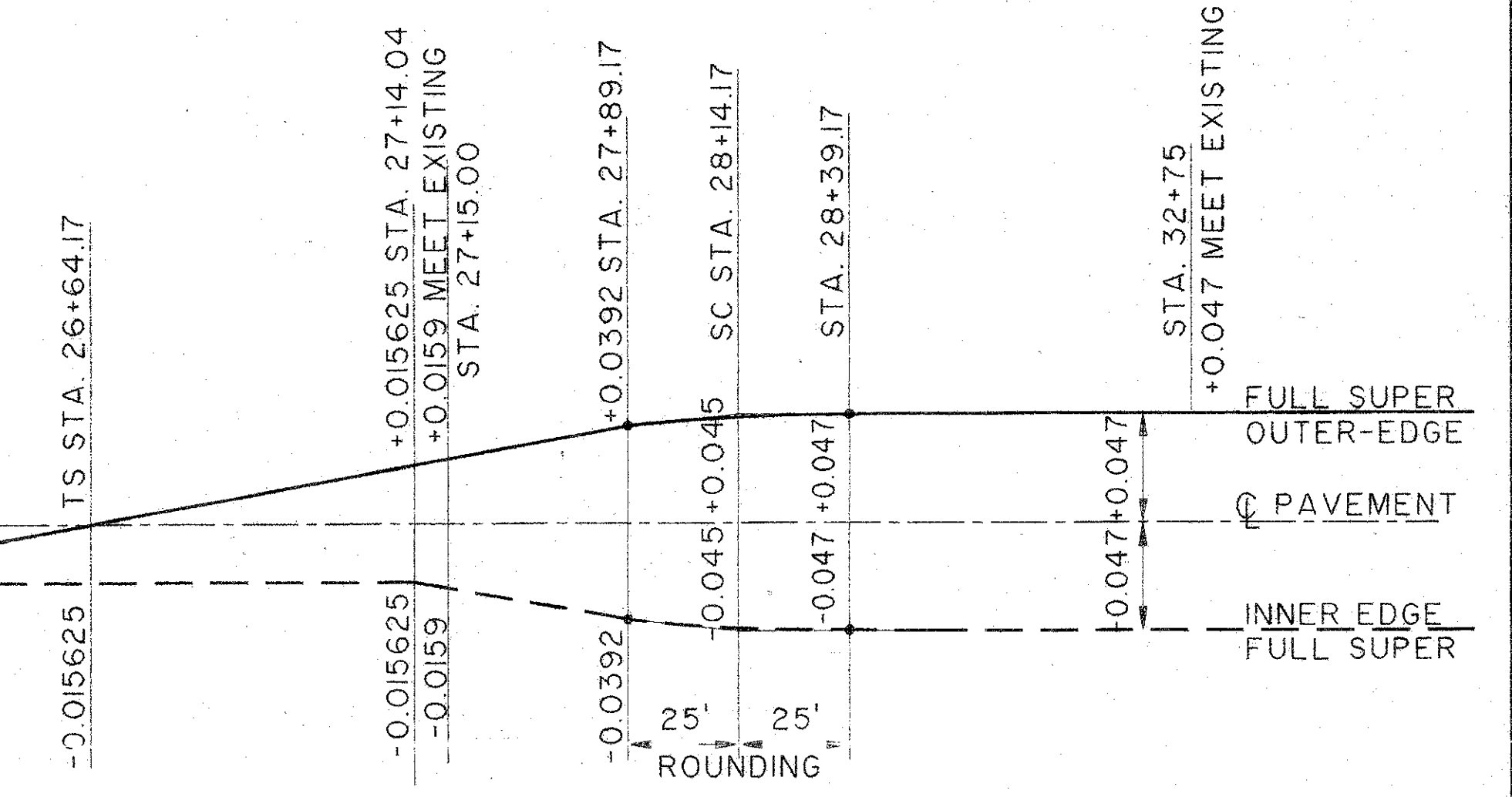


STA. 27+32± TO STA. 27+58± RT. = 26.00 LIN. FT.  
STA. 32+06± TO STA. 32+14± RT. = 08.00 LIN. FT.  
TOTAL = 34.00 LIN. FT.

\* GRADED SHOULDER WIDTH = 8' (NDC 10')  
⊕ 0.0417 FT/FT OR RATE OF SUPERELEVATION IF GREATER THAN 0.0417



FOR LEGEND SEE SHEET 2  
\*\* GUARDRAIL OFFSET VARIES. SEE PLAN AND PROFILE DRAWINGS.  
⊕ FOR LIMIT OF GUARDRAIL, SEE PLAN AND PROFILE



SUPERELEVATION TABLE

POINT	STATION	17' LEFT, EDGE OF SHOULDER ELEVATION	LEFT SHOULDER CROSS SLOPE FT/FT	12' LEFT, EDGE OF PAVEMENT ELEVATION	LEFT PAVEMENT CROSS SLOPE FT/FT	PROFILE GRADE ELEVATION	RIGHT PAVEMENT CROSS SLOPE FT/FT	12' RIGHT, EDGE OF PAVEMENT ELEVATION	RIGHT SHOULDER CROSS SLOPE FT/FT	17' RIGHT, EDGE OF SHOULDER ELEVATION	REMARKS
	26+14.13	-	-0.042	-	-0.015625	-	-0.015625	-	-0.042	-	
TS	26+64.17	853.82	-0.042	854.03	0.00	854.03	-0.015625	853.84	-0.042	853.63	
	26+75	854.30	-0.042	854.51	+0.0034	854.47	-0.015625	854.28	-0.042	854.07	
	27+00	855.30	-0.042	855.51	+0.0112	855.38	-0.015625	855.19	-0.042	854.98	
	27+14.04	855.90	-0.042	856.11	+0.015625	855.92	-0.015625	855.73	-0.042	855.52	
	27+15	855.94	-0.042	856.15	+0.0159	855.96	-0.0159	855.77	-0.042	855.56	BEGIN FULL DEPTH REPLACEMENT
	27+25	856.38	-0.038	856.57	+0.0191	856.34	-0.0191	856.11	-0.042	855.90	
	27+50	857.37	-0.033	857.53	+0.0269	857.21	-0.0269	856.89	-0.042	856.68	
	27+75.23	858.32	-0.021	858.43	+0.0348	858.01	-0.0348	-	-	857.42	BEGIN APPROACH SLAB
	27+89.17	859.08	-	-	+0.0392	858.41	-0.0392	-	-	857.74	
	28+00	859.42	-	-	+0.042	858.71	-0.042	-	-	857.00	
SC	28+14.17	859.84	-	-	+0.045	859.07	-0.045	-	-	858.31	BRIDGE
	28+39.17	860.44	-	-	+0.047	859.64	-0.047	-	-	858.84	BEGIN FULL SUPER
	32+75	855.31	-0.021	855.55	+0.047	856.11	-0.047	856.67	-0.047	856.91	END FULL DEPTH REPLACEMENT
	34+26.25	-	-0.021	-	+0.047	-	-0.047	-	-0.047	-	END FULL SUPER
CS	34+51.25	-	-0.021	-	+0.0392	-	-0.0392	-	-0.042	-	