

MICROFILMED
APR 7 1960

FED. RD. DIVISION	STATE	PROJECT
2	OHIO	ACI-1103 (27)

398
413

LAKE COUNTY
SEC. LAK-1-16.55

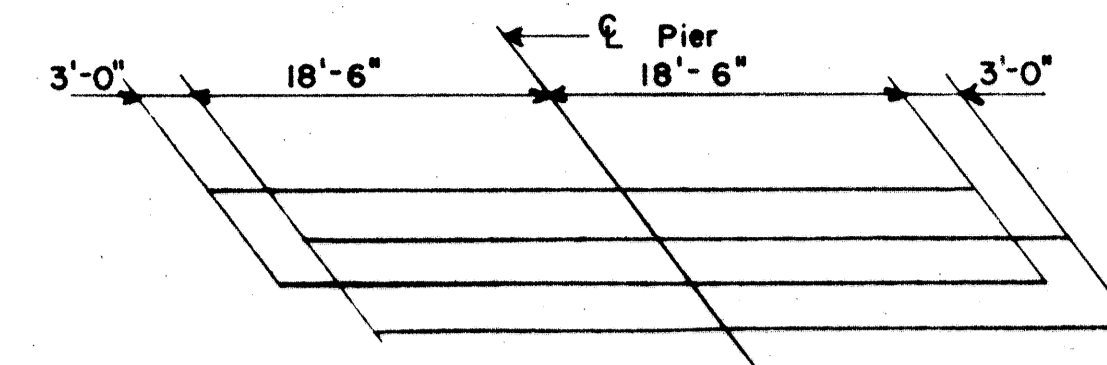
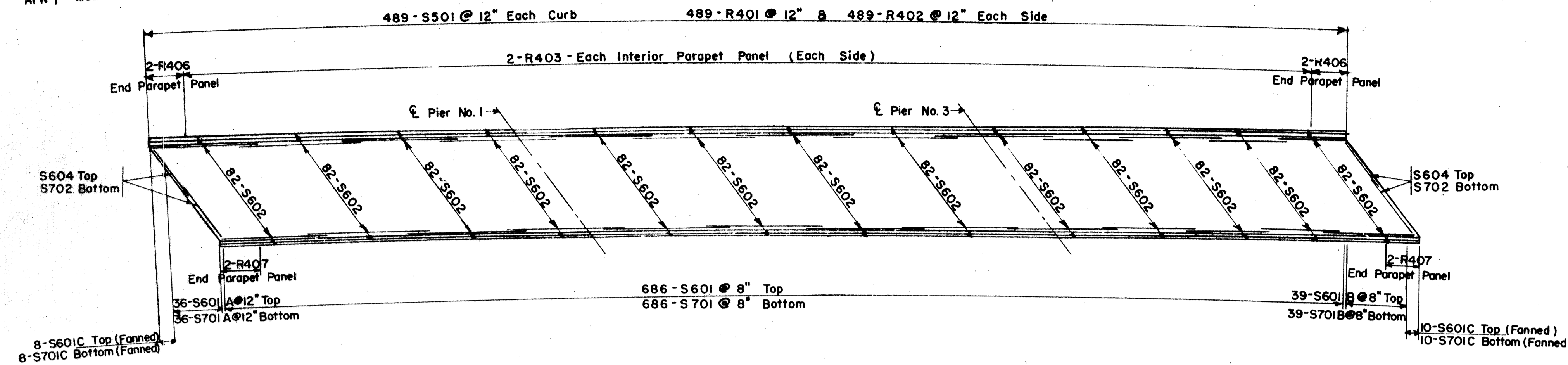
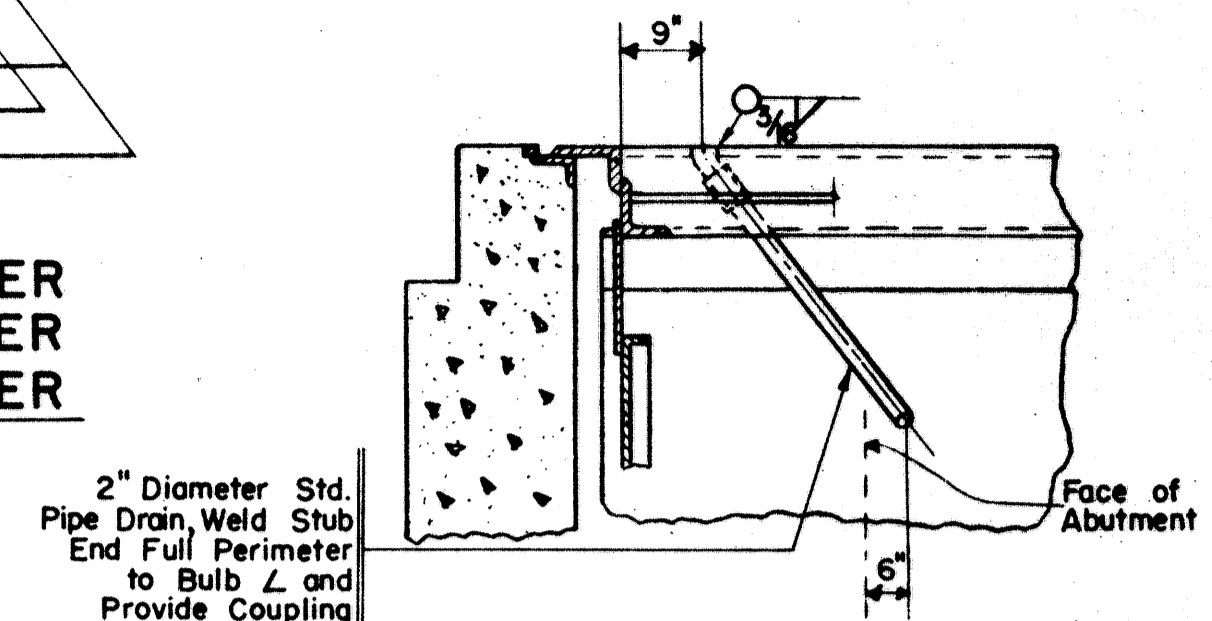
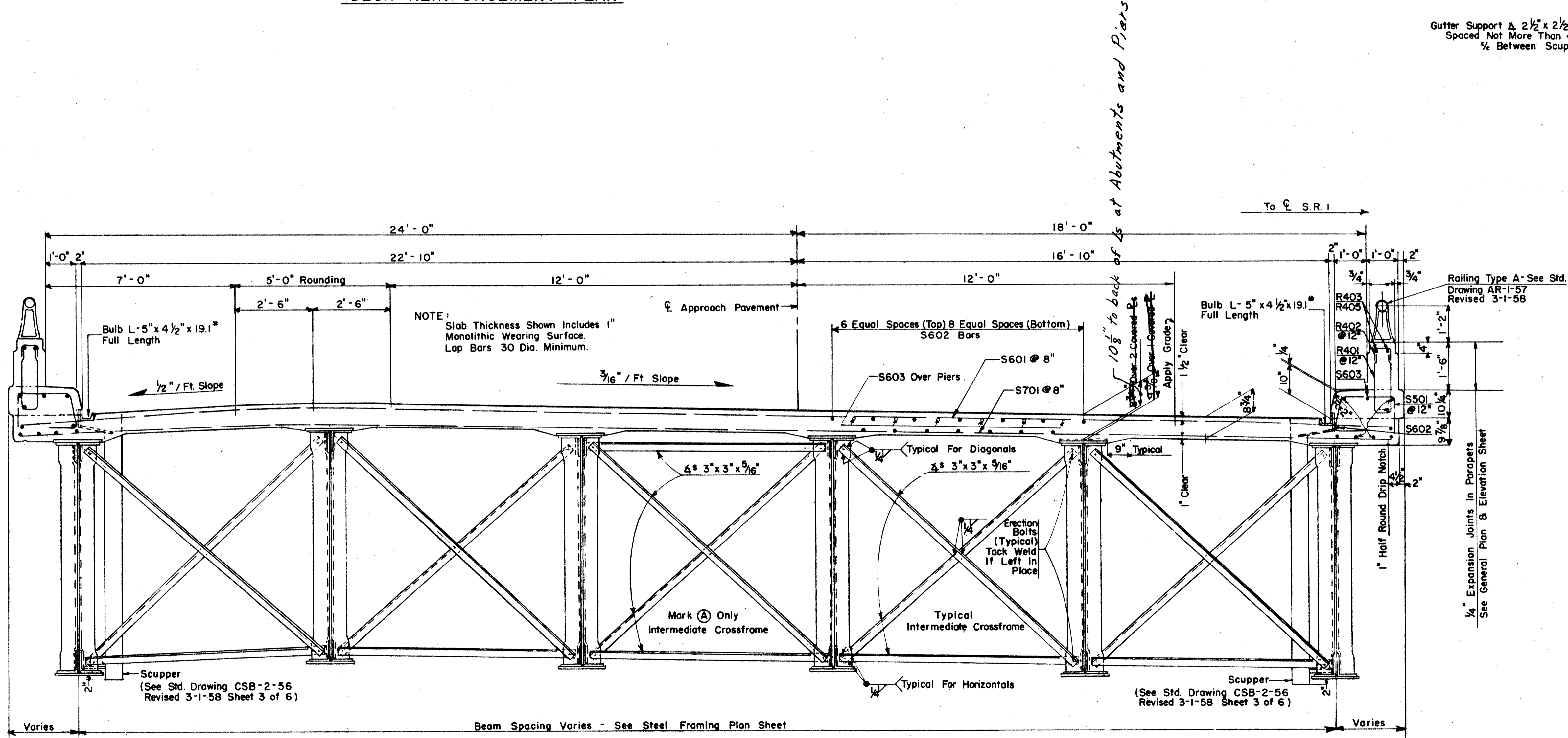


DIAGRAM SHOWING STAGGER OF S603 BARS OVER PIER
32-S603 OVER EACH PIER

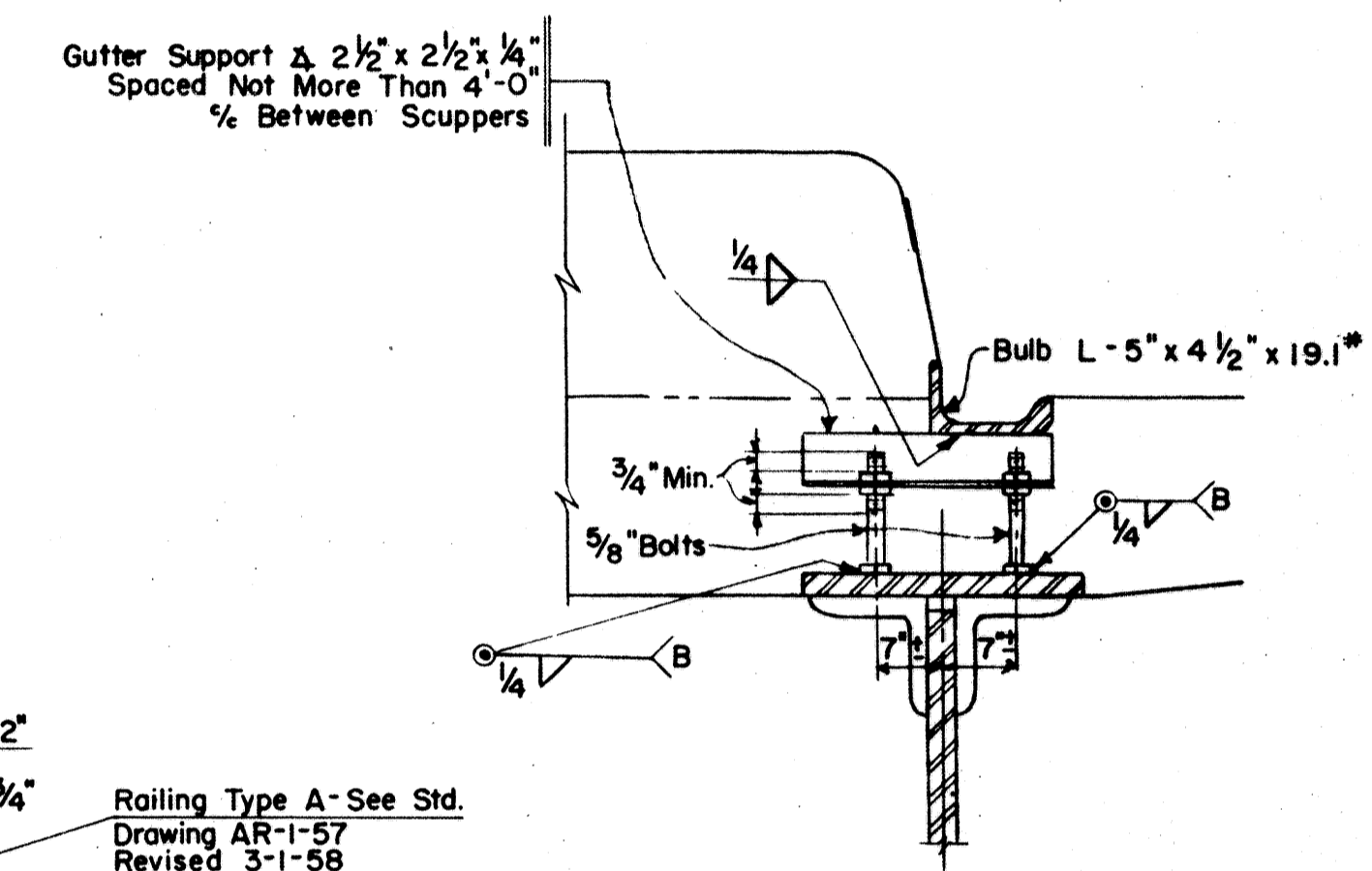


SCUPPER DETAIL AT END DAM
WEST ABUTMENT ONLY

DECK REINFORCEMENT PLAN



TYPICAL SECTION
LOOKING AHEAD



GUTTER SUPPORT

SEC. C-33 FED AID PROJ NO ACI-1103 (27)
PREPARED BY
CAPITOL ENGINEERING ASSOCIATES, DILLSBURG, PA.
FOR
STATE OF OHIO
DEPARTMENT OF HIGHWAYS
DECK DETAILS
BRIDGE NO. LAK-1-1905
S.R.I OVER PAINE CREEK (NORTH BRIDGE)
LAKE COUNTY
STA. 654+75

DESIGNED	DRAWN	TRACED	CHECKED	REVISED DATE	REVISED
JHT	JHT		WO	6-2-58	9-19-58