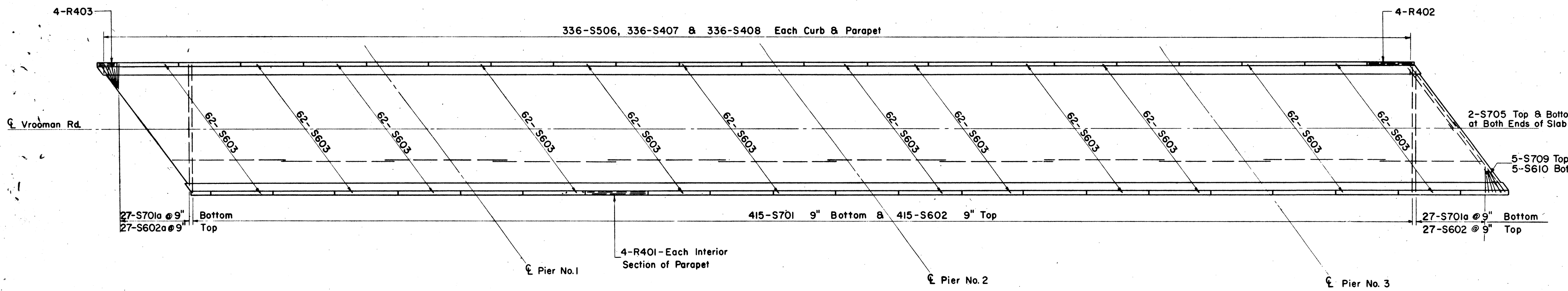


MICROFILMED
APR 5 1989

FED. RD. DIVISION	STATE	PROJECT	384 413
2	OHIO	ACI-1103(27)	

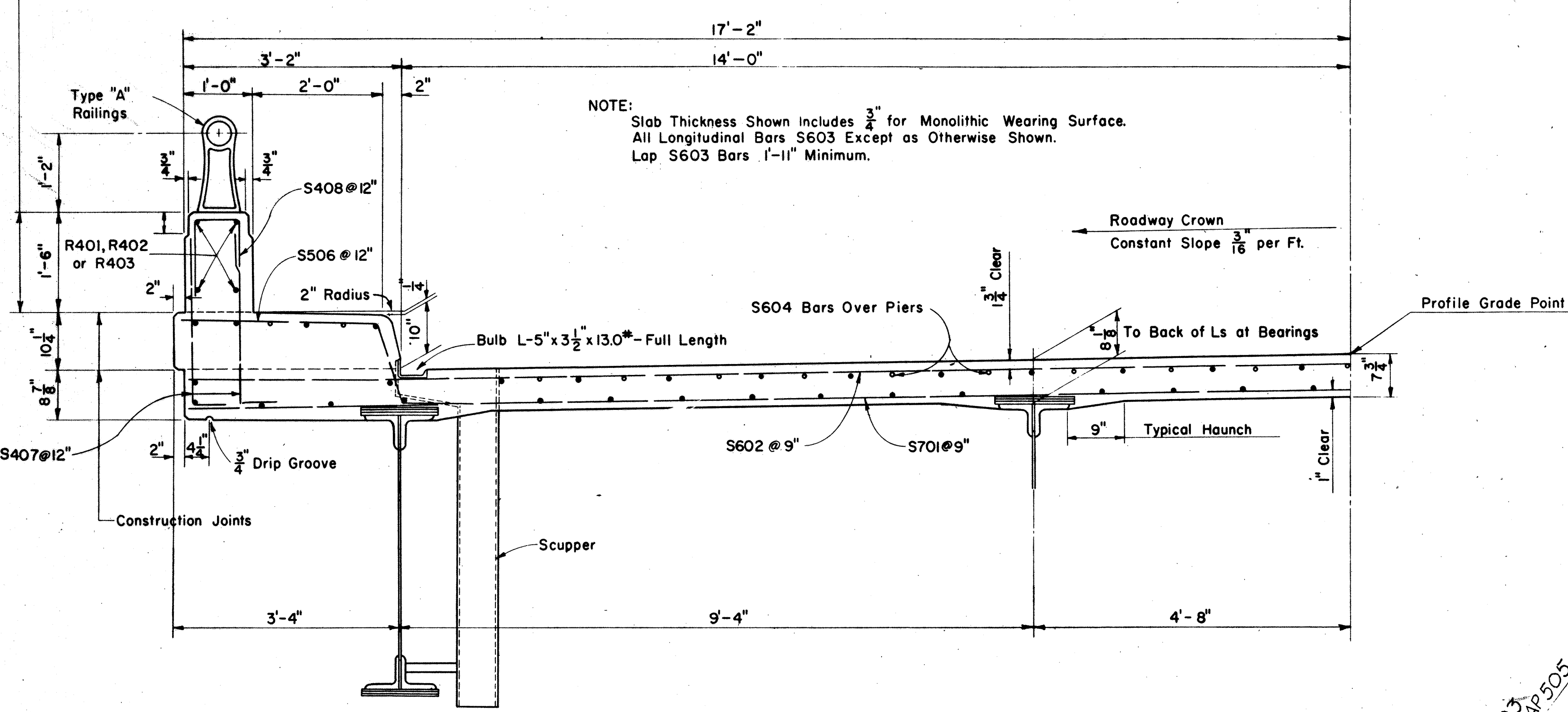
LAKE COUNTY
SEC. LAK-1-16.55



DECK REINFORCEMENT PLAN

MARK	NO.	SIZE	LENGTH	TYPE	REMARKS	WEIGHT
S701	415	7	34'-0"	Str.		28810
S701a	54	7	6'-5 1/4" to 32'-11 1/4"	Str.	2ea. Vary by 1'-0 1/4"	21175
S602	415	6	34'-0"	Str.		21150
S602a	54	6	6'-5 1/4" to 32'-11 1/4"	Str.	2ea. Vary by 1'-0 1/4"	1599
S603	742	6	30'-0"	Str.		33410
S604	69	6	40'-0"	Str.		4140
S705	16	7	22'-0"	Str.		718
S506	672	5	4'-6"	Bent.		350
S407	1344	4	2'-10"	Bent.		2540
S610	10	6	6'-0"	Str.		90
S709	10	7	6'-0"	Str.		143
R401	160	4	15'-6"	Str.		Include With Rail for Payment
R402	8	4	12'-8"	Str.		
R403	8	4	4'-8"	Str.		
R408	672	4	3'-2"	Bent.		

1/4" Expansion Joints in Parapets.
See Plan & Elevation Sheet.



TYPICAL HALF SECTION

Mark	No.	Size	Length	Shape	Weight	Mark	No.	Size	Length	Shape	Weight
AP501	6	5	4'-10" to 8'-10"	Str.		AP801	76	8	25'-7"	Bent	
AP502	2	5	11'-6"	Str.		AP802	2	8	26'-6"	Bent	
AP503	2	5	13'-11"	Str.		AP803	2	8	27'-0"	Bent	
AP504	2	5	16'-6"	Str.		AP804	2	8	21'-0"	Str.	
AP505	10	5	19'-5" to 27'-5"	Str.		AP805	2	8	16'-8"	Str.	
AP506	8	5	30'-0"	Str.		AP806	2	8	14'-2"	Str.	
AP507	14	5	24'-2" to 12'-2"	Str.		AP807	2	8	25'-6"	Bent	
AP508	2	5	10'-8"	Str.		AP808	2	8	25'-0"	Bent	
AP509	6	5	9'-2" to 6'-2"	Str.		AP809	2	8	24'-8"	Str.	
AP510	2	5	4'-0"	Str.		AP810	8	8	6'-0"	Str.	

Note
Bars AP501, 505, 507
and 509 Vary by 2'-0"
increments.

* Provide Six (6) Extra AP501 bars
4'-10" long for acute corner, as shown

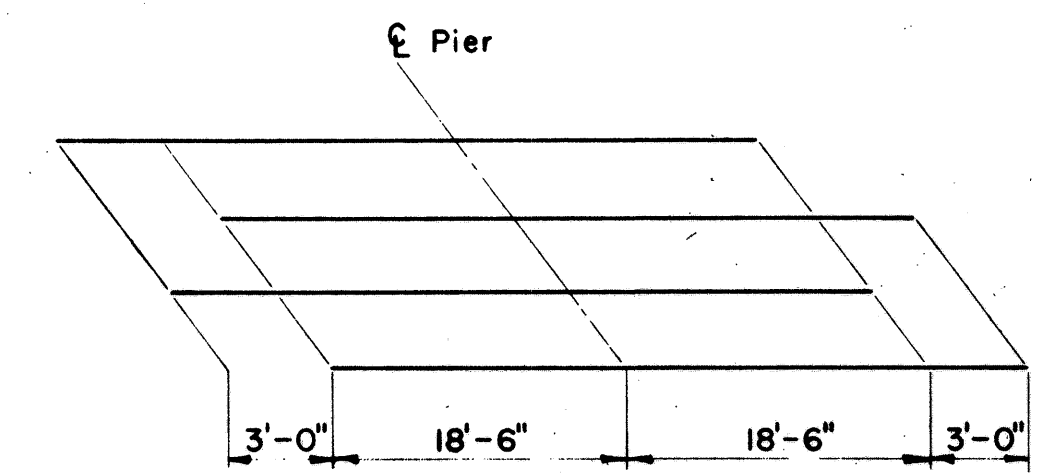
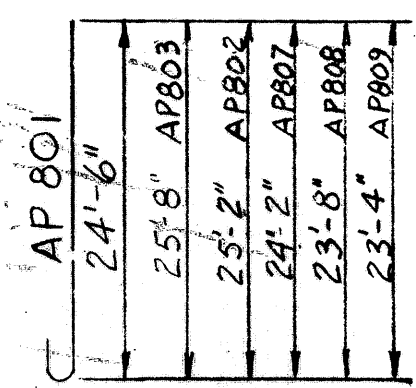
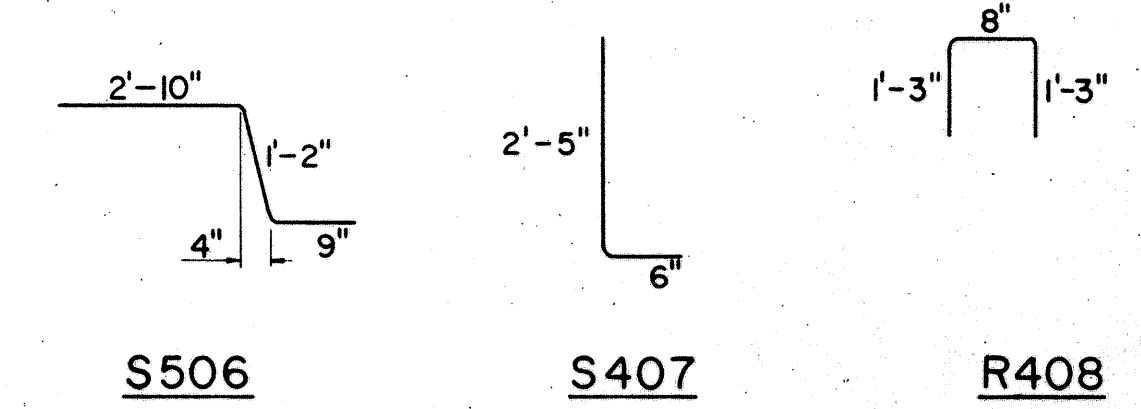
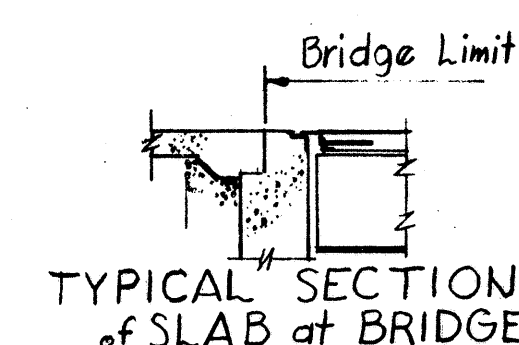


DIAGRAM SHOWING STAGGER OF S604 BARS OVER PIERS

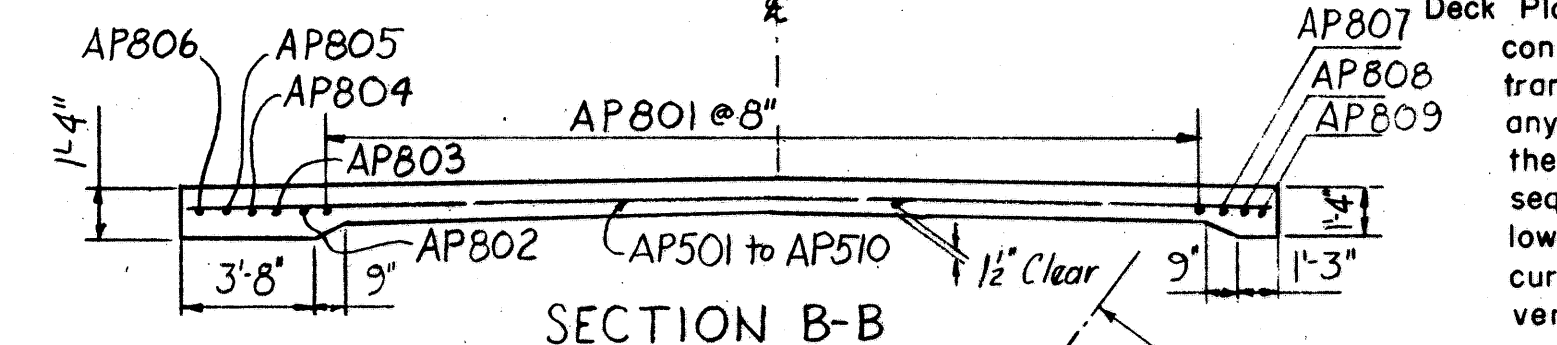


NOTES

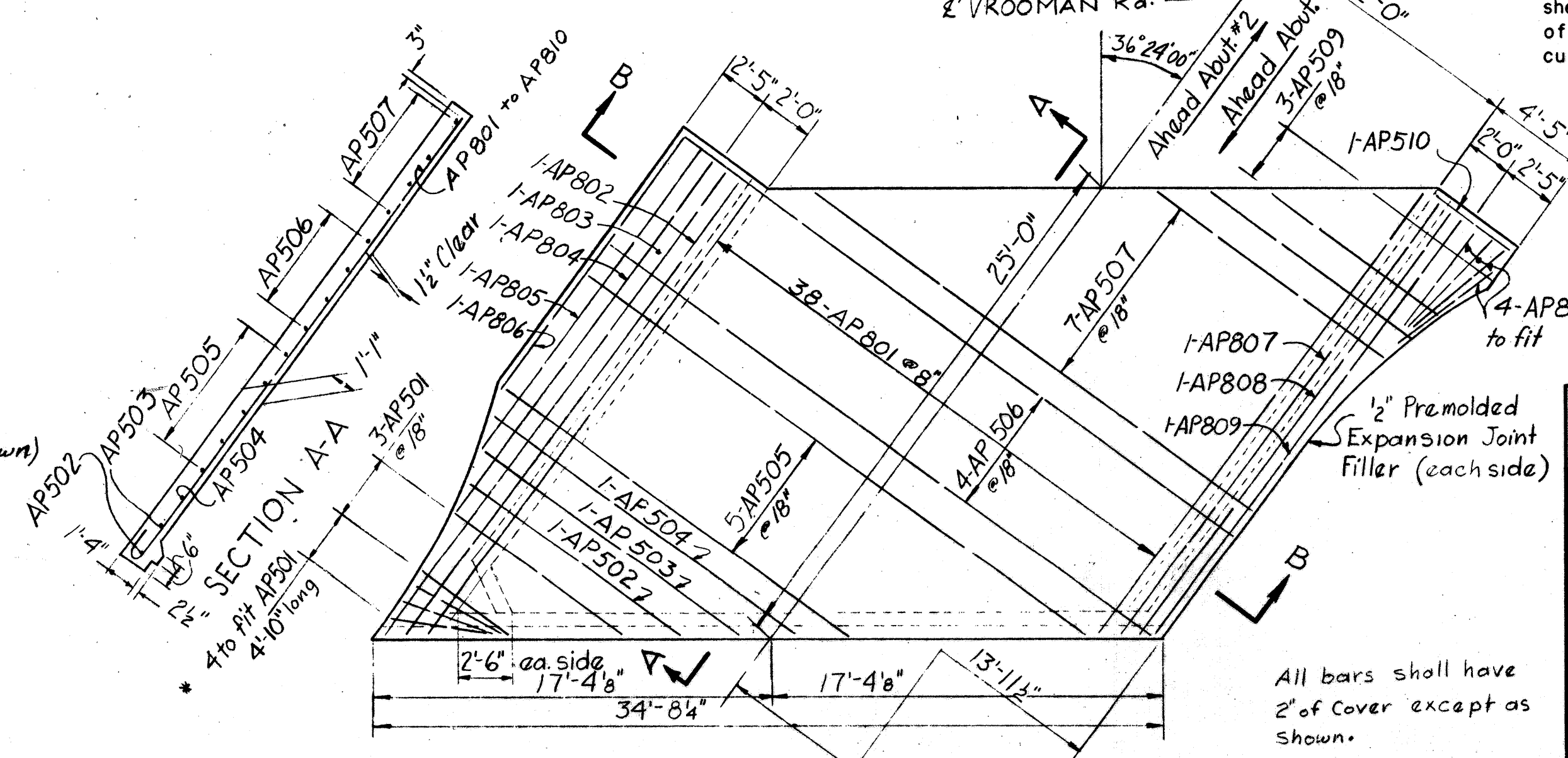
Reference shall be made to Standard Drawing AR-1-57, revised 3-1-58 for aluminum railing type "A" and concrete parapet details.
Concrete and reinforcing steel above parapet construction joint included with railing for payment.
All concrete shall be class "C".
Deck Placing Procedure: In placing the deck concrete, construction joints will be permitted, parallel to the transverse reinforcing steel and near the middle of any span. Because of the flow of curing water from the surface of previously-placed deck concrete, the sequence of pours shall be upgrade, starting at the lowest end (or ends) on an inclined grade or vertical curve (or at an intermediate low point for a sagged vertical curve).
Reference shall be made to Standard Drawing CSB-2-56, sheets 2 & 3 of 6, dated 12-3-56, for details of end dams, gutters, scuppers, pipe drains and curb plates.



TYPICAL SECTION OF SLAB AT BRIDGE



SECTION B-B



PLAN of APPROACH SLAB

Approach slabs shall be Class "C" concrete. Reinforcing steel is included in Reinforced Concrete Approach Slab item I-7 and is not paid for separately. For details not shown refer to Standard Drawing AS-1-54 revised 12-1-54.

SEC. C-33 FED. AID PROJ. NO. ACI-1103(27)

PREPARED BY
CAPITOL ENGINEERING ASSOCIATES, DILLSBURG, PA.
FOR

STATE OF OHIO
DEPARTMENT OF HIGHWAYS
DIVISION OF DESIGN AND CONSTRUCTION
BUREAU OF BRIDGES

DECK DETAILS
BRIDGE NO. LAK-1-1822
S.R.1 UNDER VROOMAN ROAD
LAKE COUNTY

STA. 608+77.78

DESIGNED	DRAWN	TRACED	CHECKED	REVISED	DATE	REVISED
HK	BJ		MN			