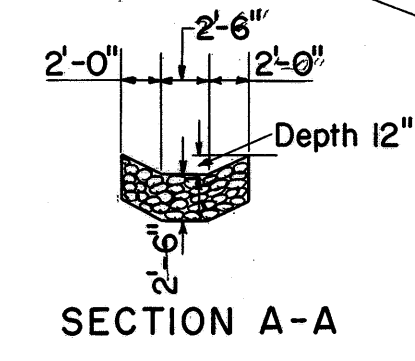
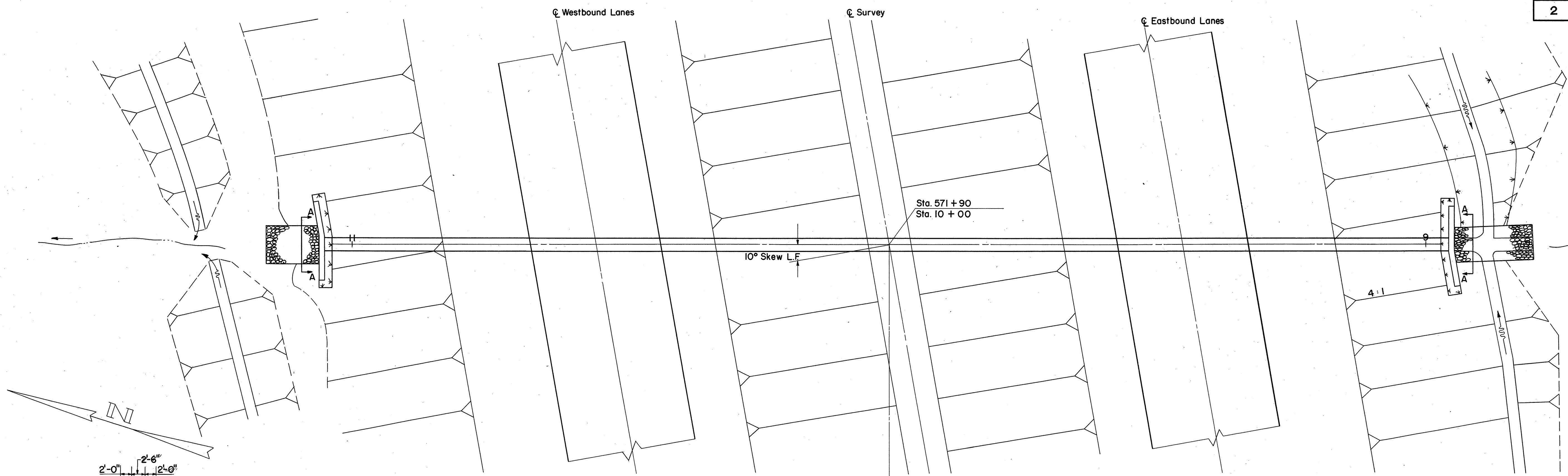


LAKE COUNTY
LAK-1-16.55



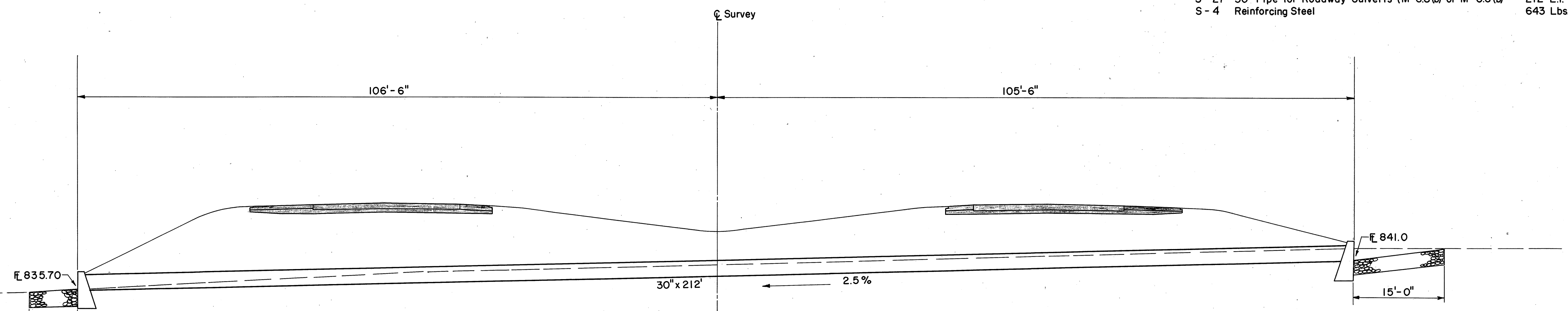
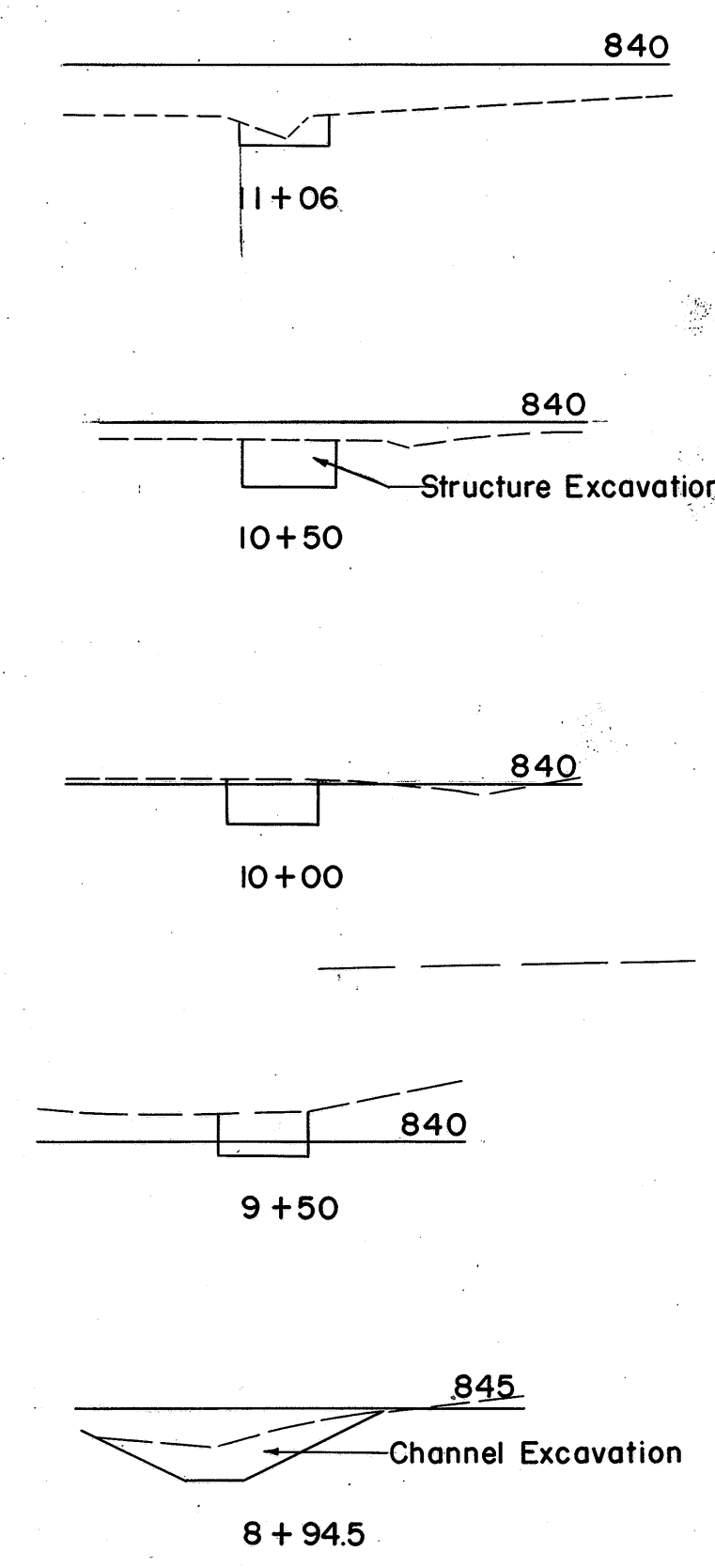
AREA = 19 ACRES
Q₅₀ = 46 C.F.S.

SCALE: 1" = 10'

HEADWATER = 4.37 FT.
OUTLET VELOCITY = 13.8 F.P.S.

ESTIMATED QUANTITIES

E-2	Excavation for Structures	104 C.Y.
E-3	Channel Excavation	6 C.Y.
L-10	Sodding	6.6 S.Y.
S-1	Concrete for Structures	10.5 C.Y.
I-10	Dumped Rock	14 C.Y.
S-27	30" Pipe for Roadway Culverts (M-6.8(b) or M-6.6(b))	212 L.F.
S-4	Reinforcing Steel	643 Lbs.



CULVERT DATA

TYPE: Pipe Culvert - Type B Headwalls
 SIZE: 30" x 212"
 WORK REQ'D: Build a Pipe Culvert with Type B Headwalls
 Excavate Channel Rt. as Required.
 Place Dumped Rock Rt. and Lt. as shown.

STRUCTURE NO. LAK-1-17.53