

LAKE COUNTY
LAK-I-16.55

RAMP E

E-1 SPIRAL DATA
P.I. Sta. 4+00.07
 $\Delta = 6^\circ 45' 00''$ Lt.
L.T. = 100.07'
S.T. = 50.07'
L_s = 150.00'

E-2 CURVE DATA
P.I. Sta. 5+66.02
 $\Delta = 20^\circ 39' 23.44''$ Lt.
D = 9° 00' 00"
R = 636.62'
L = 229.52'
T = 116.02'

E-3 CURVE DATA
P.I. Sta. 9+27.67
 $\Delta = 45^\circ 00' 00''$ Rt.
D = 24° 00' 00"
R = 238.73'
L = 187.50'
T = 98.89'

GOODRIDGE DRIVE CURVE DATA
P.I. Sta. 4+22.99
 $\Delta = 50^\circ 25'$
R = 75.00'
L = 66.00'
T = 35.31'

FOR DRIVE PROFILE SEE SHEET NO. 329

DRIVE CROSS-SECTIONS SHEET NO. 367

TYPICAL SECTION GOODRIDGE DRIVE (STA. 33+75 RT. VROOMAN RD.)
*STA. 0+10 TO STA. 0+60

4'-0" 6'-0" 6'-0" 4'-0"
1" per 16' 3" per 16' 3" per 16' 1" per 16'

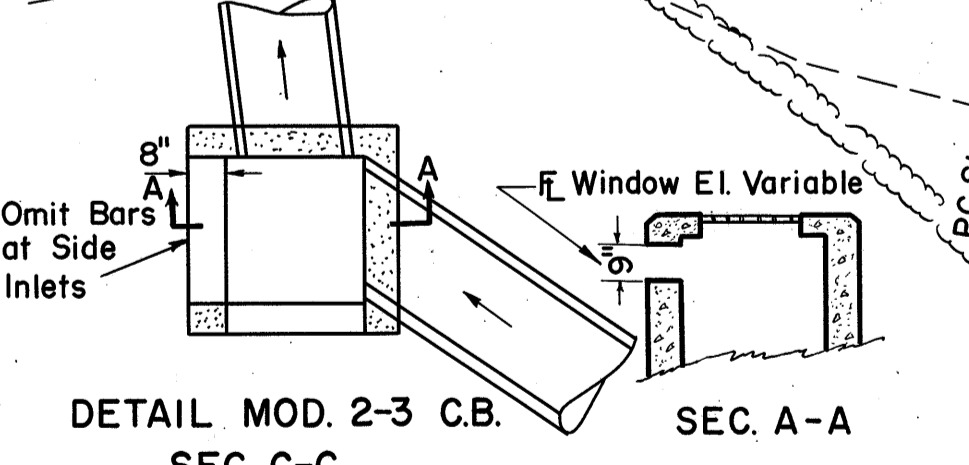
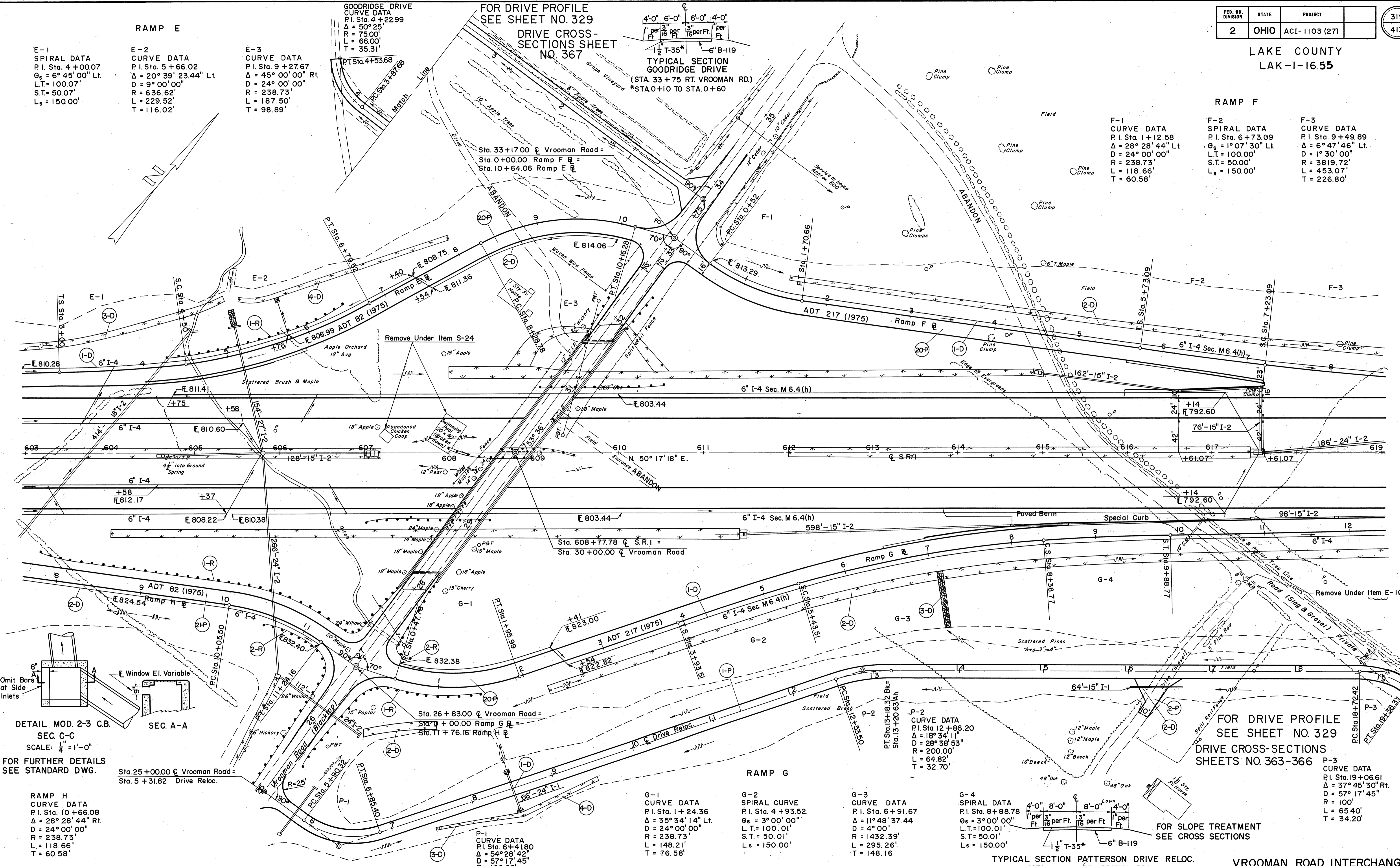
1/2" T-35* 6" B-119

RAMP F

F-1 CURVE DATA
P.I. Sta. 1+12.58
 $\Delta = 28^\circ 28' 44''$ Lt.
D = 24° 00' 00"
R = 238.73'
L = 118.66'
T = 60.58'

F-2 SPIRAL DATA
P.I. Sta. 6+73.09
 $\Delta = 1^\circ 07' 30''$ Lt.
L.T. = 100.00'
S.T. = 50.00'
L_s = 150.00'

F-3 CURVE DATA
P.I. Sta. 9+49.89
 $\Delta = 6^\circ 47' 46''$ Lt.
D = 1° 30' 00"
R = 3819.72'
L = 453.07'
T = 226.80'



FOR FURTHER DETAILS SEE STANDARD DWG.

RAMP H CURVE DATA
P.I. Sta. 10+66.08
 $\Delta = 28^\circ 28' 44''$ Rt.
D = 24° 00' 00"
R = 238.73'
L = 118.66'
T = 60.58'

Sta. 25+00.00 \bar{C} Vrooman Road = Sta. 5+31.82 Drive Reloc.

P-1 CURVE DATA
P.I. Sta. 6+41.80
 $\Delta = 54^\circ 28' 42''$
D = 57° 17' 45"
R = 100.00'
L = 95.08'
T = 51.48'

G-1 CURVE DATA
P.I. Sta. 1+24.36
 $\Delta = 35^\circ 34' 14''$ Lt.
D = 24° 00' 00"
R = 238.73'
L = 148.21'
T = 76.58'

G-2 SPIRAL CURVE
P.I. Sta. 4+93.52
 $\Delta = 3^\circ 00' 00''$
L.T. = 100.01'
S.T. = 50.01'
L_s = 150.00'

G-3 CURVE DATA
P.I. Sta. 6+91.67
 $\Delta = 11^\circ 48' 37.44''$
D = 4° 00' 00"
R = 1432.39'
L = 295.26'
T = 148.16

G-4 SPIRAL DATA
P.I. Sta. 8+88.78
 $\Delta = 3^\circ 00' 00''$
L.T. = 100.01'
S.T. = 50.01'
L_s = 150.00'

FOR DRIVE PROFILE SEE SHEET NO. 329

DRIVE CROSS-SECTIONS SHEETS NO. 363-366

P-3 CURVE DATA
P.I. Sta. 19+06.61
 $\Delta = 37^\circ 45' 30''$ Rt.
D = 57° 17' 45"
R = 100'
L = 65.40'
T = 34.20'

TYPICAL SECTION PATTERSON DRIVE RELOC. (STA. 25+00 RT. VROOMAN RD.)
SCALE: 1" = 10'-0" *Sta. 5+40.82 to Sta. 5+90.82