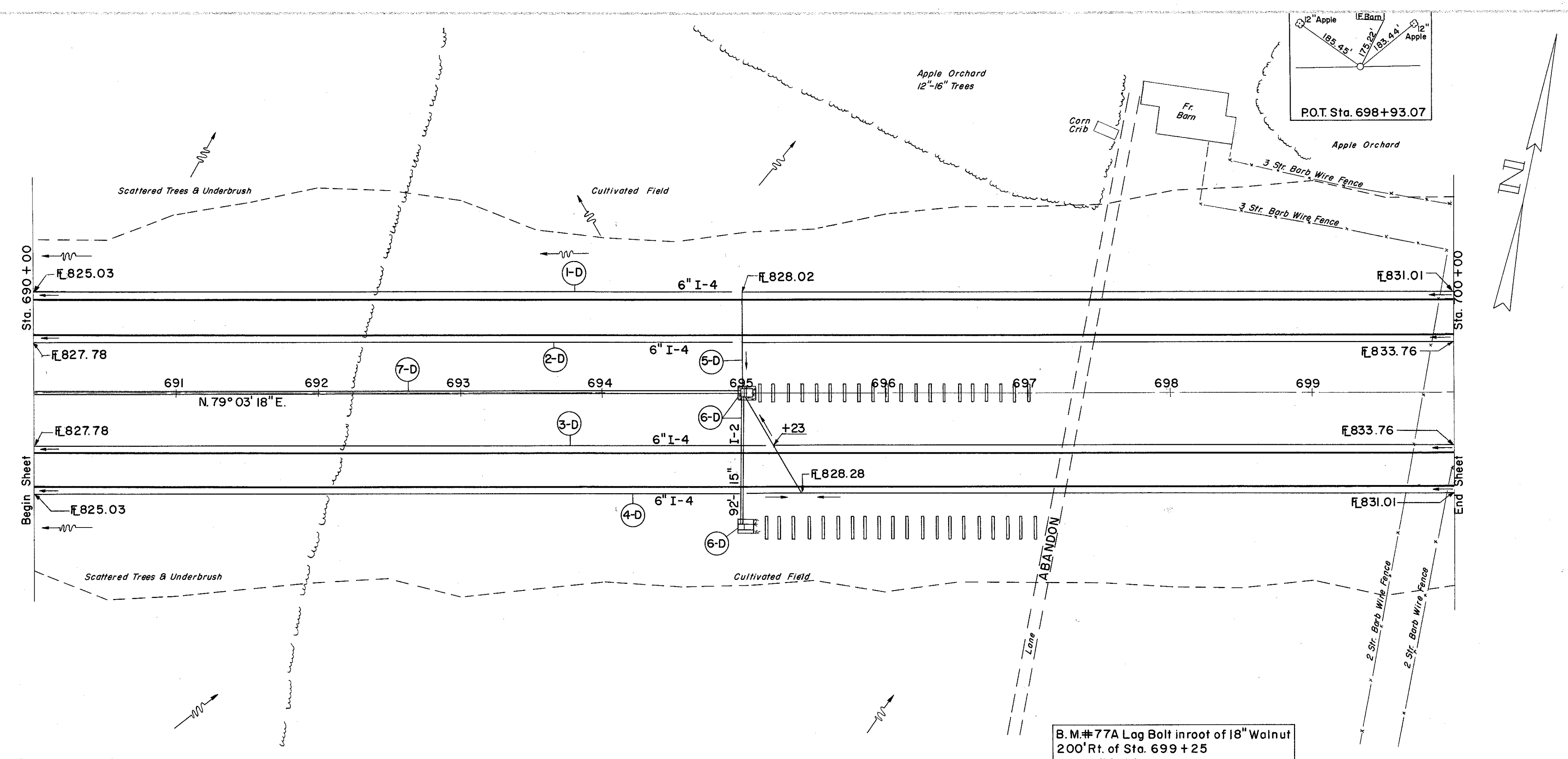
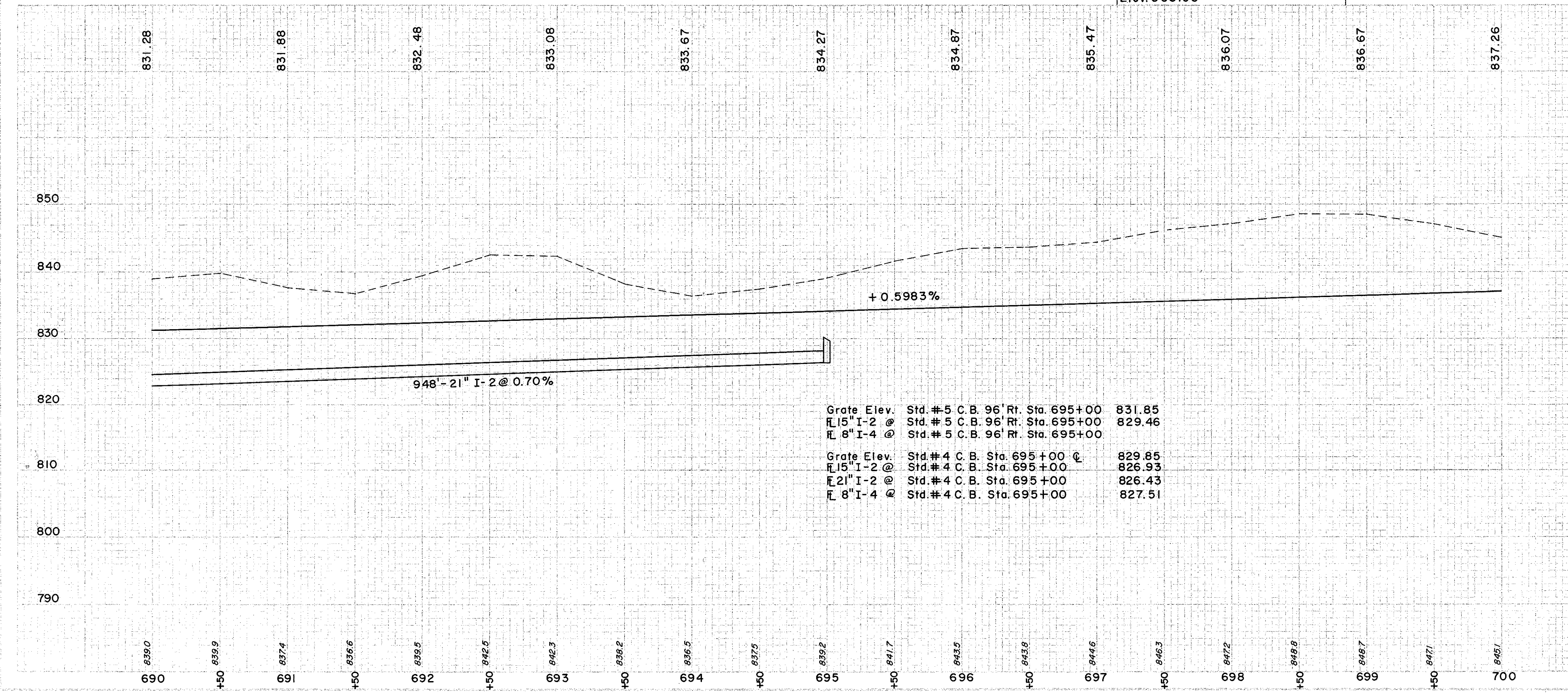


LAKE COUNTY
LAK-I-16.55



B.M.#77A Lag Bolt inroot of 18" Walnut
200' Rt. of Sta. 699 + 25
Elev. 858.90



Grate Elev.	Std. #5 C.B. 96" Rt. Sta. 695+00	831.85
FL 15" I-2 @	Std. #5 C.B. 96" Rt. Sta. 695+00	829.46
FL 8" I-4 @	Std. #5 C.B. 96" Rt. Sta. 695+00	
Grate Elev.	Std. #4 C.B. Sta. 695+00 @	829.85
FL 15" I-2 @	Std. #4 C.B. Sta. 695+00	826.93
FL 21" I-2 @	Std. #4 C.B. Sta. 695+00	826.43
FL 8" I-4 @	Std. #4 C.B. Sta. 695+00	827.51

(D) DRAINAGE

REF NO.	STATION		SIDE	CL. STORM SEWER UNDER PAVT. SEC. M-6.8(b) OR M-6.3(b) PIPE 15" (M-6.4(c) SHOW DEEP)	LIN. FT.	ITEMS				LIN. FT. EACH	
	FROM	TO				6" WYE	6" BEND	6" x 8" INCREASER	6" x 8" TEE		STD. #4 18" CATCH BASIN
I-2	690+00	700+00	7' LT	6"	996						
I-4	690+00	700+00	37' LT	6"	996						
I-5	690+00	700+00	37' RT	6"	996						
I-6	690+00	700+00	7' RT	6"	996						
I-7	696+00	695+00	0'	6"	92						
I-8	695+00	695+00	0'	6"	92						
I-10	695+00	700+00	0'	6"	500						

EXCAVATION	=	81,866 C.Y.
EMBANKMENT	=	0 C.Y.
REEMBANKMENT @ 22'	=	0 C.Y.