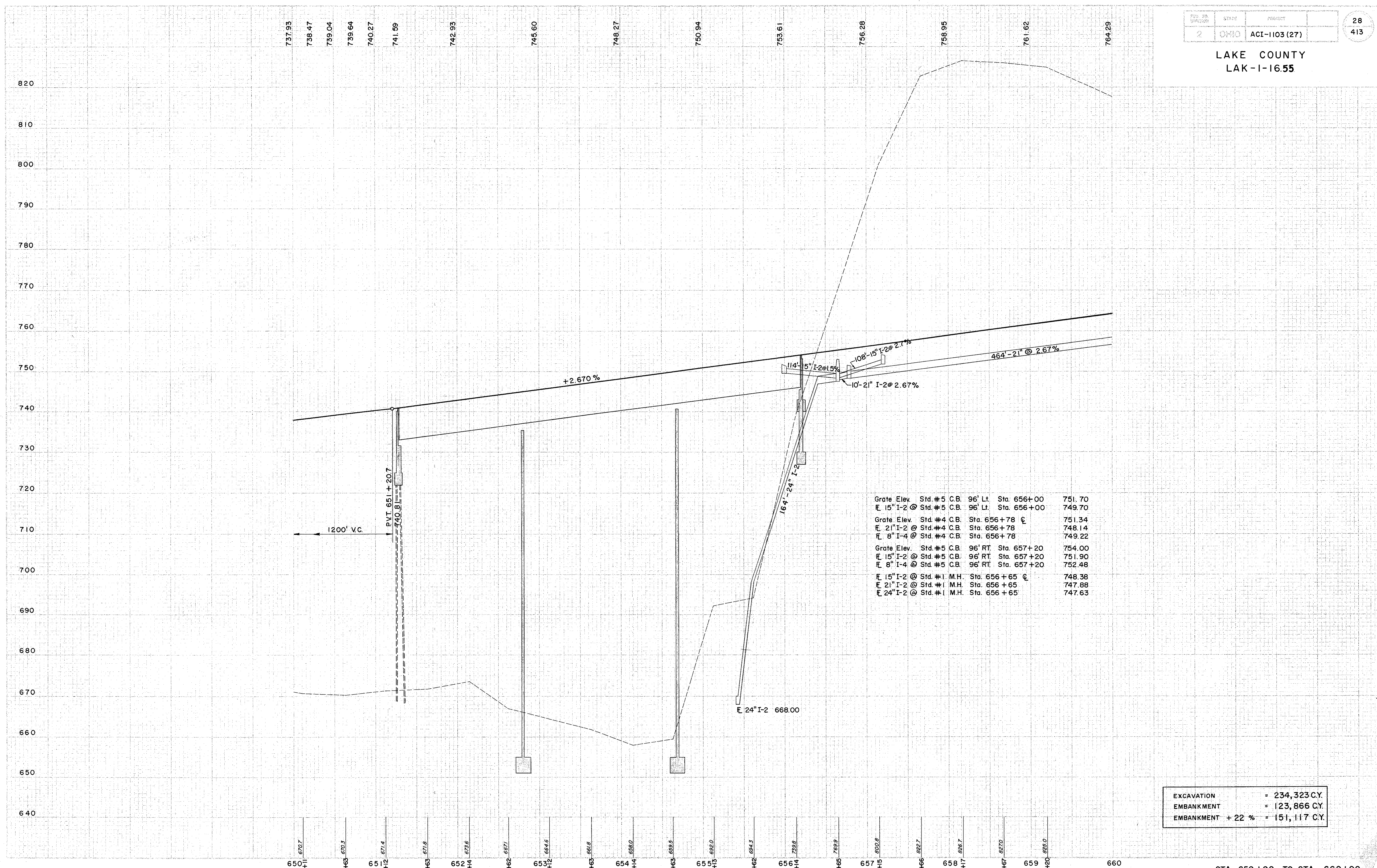


MICROFILMED  
APR 5 1988

2	OHIO	ACI-1103 (27)
---	------	---------------

28  
413

LAKE COUNTY  
LAK-1-16.55



Grate Elev.	Std. #5 C.B.	96' Lt.	Sta. 656+00	751.70
15" I-2 @	Std. #5 C.B.	96' Lt.	Sta. 656+00	749.70
Grate Elev.	Std. #4 C.B.		Sta. 656+78 C	751.34
21" I-2 @	Std. #4 C.B.		Sta. 656+78	748.14
8" I-4 @	Std. #4 C.B.		Sta. 656+78	749.22
Grate Elev.	Std. #5 C.B.	96' RT.	Sta. 657+20	754.00
15" I-2 @	Std. #5 C.B.	96' RT.	Sta. 657+20	751.90
8" I-4 @	Std. #5 C.B.	96' RT.	Sta. 657+20	752.48
15" I-2 @	Std. #1 M.H.		Sta. 656+65 C	748.38
21" I-2 @	Std. #1 M.H.		Sta. 656+65	747.88
24" I-2 @	Std. #1 M.H.		Sta. 656+65	747.63

EXCAVATION	= 234,323 C.Y.
EMBANKMENT	= 123,866 C.Y.
EMBANKMENT + 22 %	= 151,117 C.Y.

STA. 650+00 TO STA. 660+00