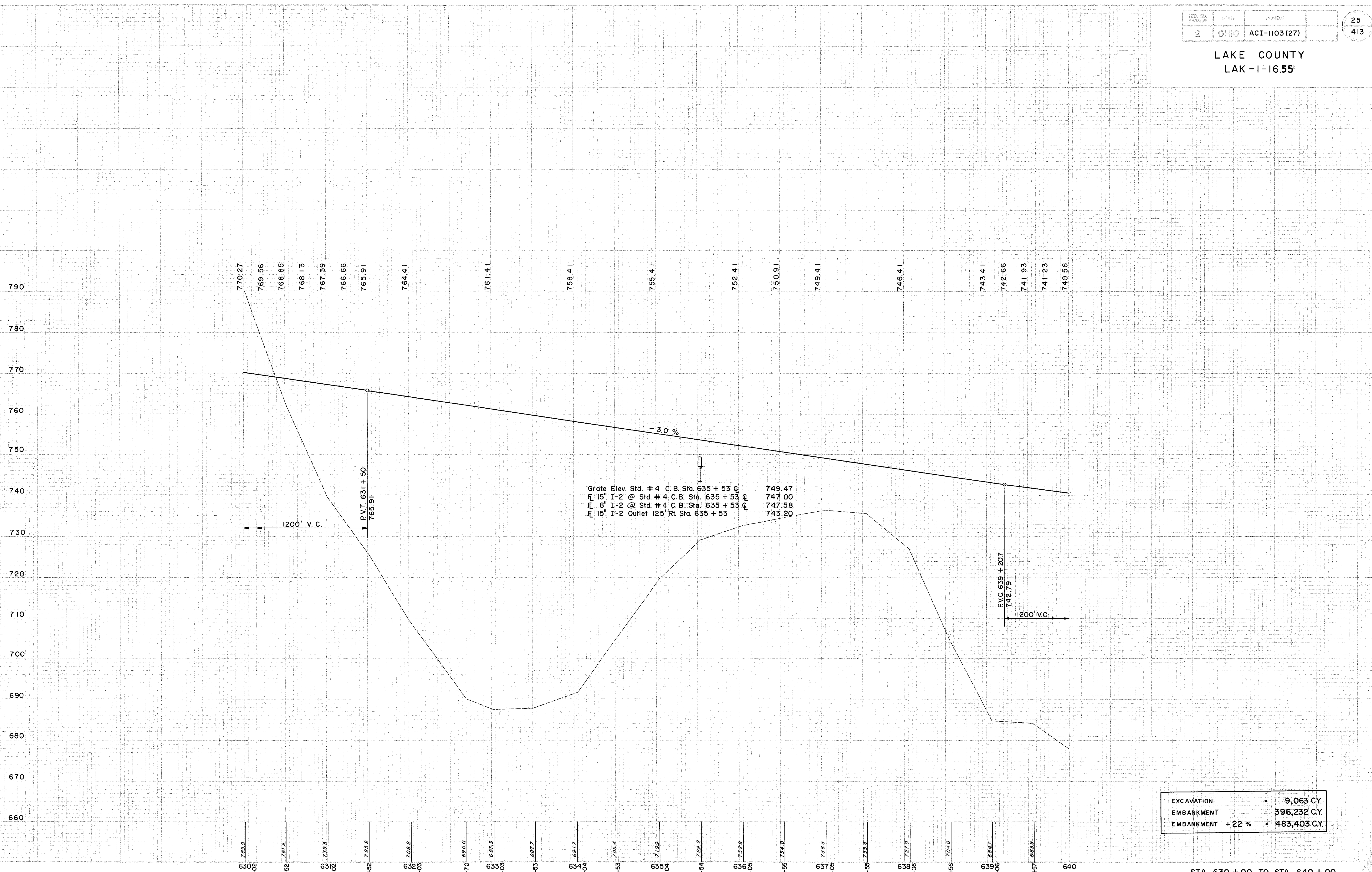


LAKE COUNTY  
LAK-1-16.55



Grate Elev. Std. # 4 C. B. Sta. 635 + 53 @ 749.47  
 Fl 15" I-2 @ Std. # 4 C. B. Sta. 635 + 53 @ 747.00  
 Fl 8" I-2 @ Std. # 4 C. B. Sta. 635 + 53 @ 747.58  
 Fl 15" I-2 Outlet 125' Rt. Sta. 635 + 53 @ 743.20

EXCAVATION	=	9,063 C.Y.
EMBANKMENT	=	396,232 C.Y.
EMBANKMENT + 22 %	=	483,403 C.Y.