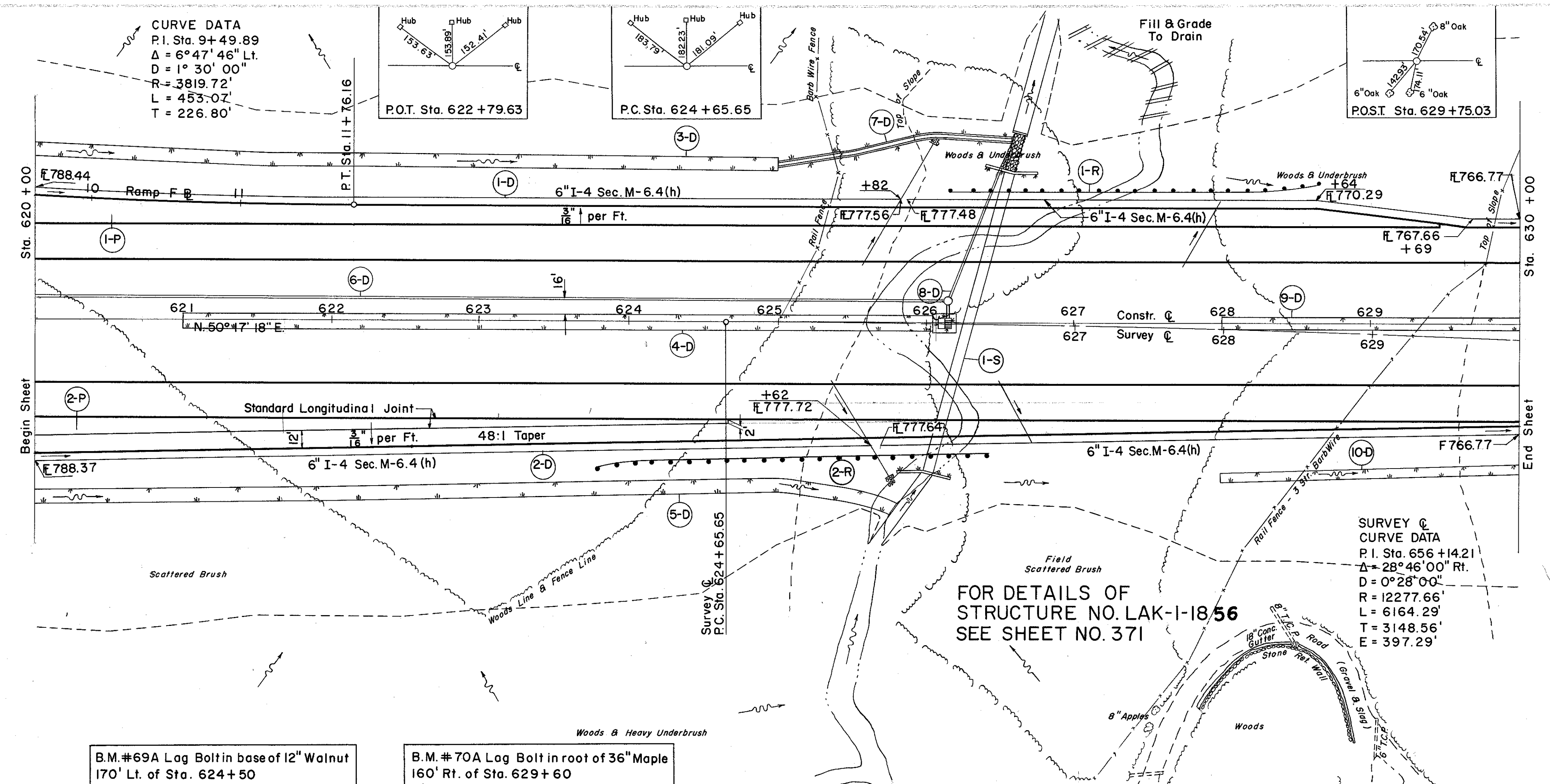


LAKE COUNTY
LAK-I-16.55

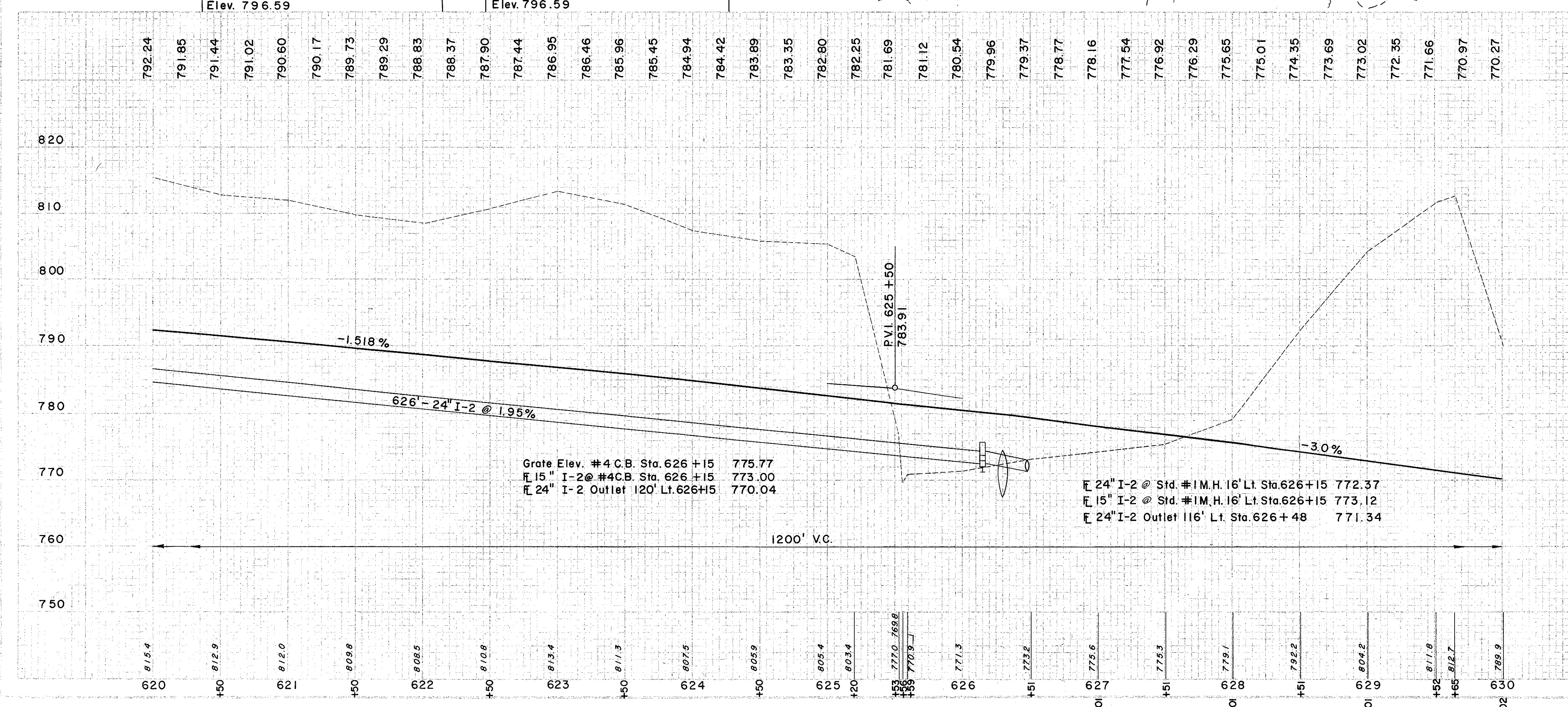


B.M. #69A Lag Bolt in base of 12" Walnut
170' Lt. of Sta. 624+50
Elev. 796.59

B.M. #70A Lag Bolt in root of 36" Maple
160' Rt. of Sta. 629+60
Elev. 796.59

FOR DETAILS OF
STRUCTURE NO. LAK-I-18.56
SEE SHEET NO. 371

SURVEY @
CURVE DATA
P.I. Sta. 656+14.21
Δ = 28° 46' 00" Rt.
D = 0° 28' 00"
R = 12277.66'
L = 6164.29'
T = 3148.56'
E = 397.29'



Grate Elev. #4 C.B. Sta. 626+15 775.77
#15" I-2 @ #4 C.B. Sta. 626+15 773.00
#24" I-2 Outlet 120' Lt. 626+15 770.04

#24" I-2 @ Std. #1M.H. 16' Lt. Sta. 626+15 772.37
#15" I-2 @ Std. #1M.H. 16' Lt. Sta. 626+15 773.12
#24" I-2 Outlet 116' Lt. Sta. 626+48 771.34

① DRAINAGE

REF. NO.	SIDE	STATION	CLASS #	DEPTH OF SODDING FT.	WIDTH OF SODDING FT.	LENGTH FT.	S. Y.	DRAINAGE	
								NO. 2 AGG.	C. Y.
I-2	SIDE	FROM 620+00 TO 630+00	24"	0.6	8.1	2.1	10	0.3	500
I-4	SIDE	FROM 620+00 TO 630+00	24"	0.5	8.1	2.1	10	0.3	500
I-5	SIDE	FROM 620+00 TO 630+00	24"	0.3	8.1	2.1	10	0.3	500
I-8	SIDE	FROM 620+00 TO 630+00	24"	0.3	8.1	2.1	10	0.3	500
I-10	SIDE	FROM 620+00 TO 630+00	24"	0.3	8.1	2.1	10	0.3	500
I-14	SIDE	FROM 620+00 TO 630+00	24"	0.3	8.1	2.1	10	0.3	500
E-2	SIDE	FROM 620+00 TO 630+00	24"	0.3	8.1	2.1	10	0.3	500
E-4	SIDE	FROM 620+00 TO 630+00	24"	0.3	8.1	2.1	10	0.3	500
E-10	SIDE	FROM 620+00 TO 630+00	24"	0.3	8.1	2.1	10	0.3	500
E-12	SIDE	FROM 620+00 TO 630+00	24"	0.3	8.1	2.1	10	0.3	500
E-14	SIDE	FROM 620+00 TO 630+00	24"	0.3	8.1	2.1	10	0.3	500
E-20	SIDE	FROM 620+00 TO 630+00	24"	0.3	8.1	2.1	10	0.3	500
E-22	SIDE	FROM 620+00 TO 630+00	24"	0.3	8.1	2.1	10	0.3	500
E-24	SIDE	FROM 620+00 TO 630+00	24"	0.3	8.1	2.1	10	0.3	500
E-26	SIDE	FROM 620+00 TO 630+00	24"	0.3	8.1	2.1	10	0.3	500
E-28	SIDE	FROM 620+00 TO 630+00	24"	0.3	8.1	2.1	10	0.3	500
E-30	SIDE	FROM 620+00 TO 630+00	24"	0.3	8.1	2.1	10	0.3	500
E-32	SIDE	FROM 620+00 TO 630+00	24"	0.3	8.1	2.1	10	0.3	500
E-34	SIDE	FROM 620+00 TO 630+00	24"	0.3	8.1	2.1	10	0.3	500
E-36	SIDE	FROM 620+00 TO 630+00	24"	0.3	8.1	2.1	10	0.3	500
E-38	SIDE	FROM 620+00 TO 630+00	24"	0.3	8.1	2.1	10	0.3	500
E-40	SIDE	FROM 620+00 TO 630+00	24"	0.3	8.1	2.1	10	0.3	500
E-42	SIDE	FROM 620+00 TO 630+00	24"	0.3	8.1	2.1	10	0.3	500
E-44	SIDE	FROM 620+00 TO 630+00	24"	0.3	8.1	2.1	10	0.3	500
E-46	SIDE	FROM 620+00 TO 630+00	24"	0.3	8.1	2.1	10	0.3	500
E-48	SIDE	FROM 620+00 TO 630+00	24"	0.3	8.1	2.1	10	0.3	500
E-50	SIDE	FROM 620+00 TO 630+00	24"	0.3	8.1	2.1	10	0.3	500
E-52	SIDE	FROM 620+00 TO 630+00	24"	0.3	8.1	2.1	10	0.3	500
E-54	SIDE	FROM 620+00 TO 630+00	24"	0.3	8.1	2.1	10	0.3	500
E-56	SIDE	FROM 620+00 TO 630+00	24"	0.3	8.1	2.1	10	0.3	500
E-58	SIDE	FROM 620+00 TO 630+00	24"	0.3	8.1	2.1	10	0.3	500
E-60	SIDE	FROM 620+00 TO 630+00	24"	0.3	8.1	2.1	10	0.3	500
E-62	SIDE	FROM 620+00 TO 630+00	24"	0.3	8.1	2.1	10	0.3	500
E-64	SIDE	FROM 620+00 TO 630+00	24"	0.3	8.1	2.1	10	0.3	500
E-66	SIDE	FROM 620+00 TO 630+00	24"	0.3	8.1	2.1	10	0.3	500
E-68	SIDE	FROM 620+00 TO 630+00	24"	0.3	8.1	2.1	10	0.3	500
E-70	SIDE	FROM 620+00 TO 630+00	24"	0.3	8.1	2.1	10	0.3	500
E-72	SIDE	FROM 620+00 TO 630+00	24"	0.3	8.1	2.1	10	0.3	500
E-74	SIDE	FROM 620+00 TO 630+00	24"	0.3	8.1	2.1	10	0.3	500
E-76	SIDE	FROM 620+00 TO 630+00	24"	0.3	8.1	2.1	10	0.3	500
E-78	SIDE	FROM 620+00 TO 630+00	24"	0.3	8.1	2.1	10	0.3	500
E-80	SIDE	FROM 620+00 TO 630+00	24"	0.3	8.1	2.1	10	0.3	500
E-82	SIDE	FROM 620+00 TO 630+00	24"	0.3	8.1	2.1	10	0.3	500
E-84	SIDE	FROM 620+00 TO 630+00	24"	0.3	8.1	2.1	10	0.3	500
E-86	SIDE	FROM 620+00 TO 630+00	24"	0.3	8.1	2.1	10	0.3	500
E-88	SIDE	FROM 620+00 TO 630+00	24"	0.3	8.1	2.1	10	0.3	500
E-90	SIDE	FROM 620+00 TO 630+00	24"	0.3	8.1	2.1	10	0.3	500
E-92	SIDE	FROM 620+00 TO 630+00	24"	0.3	8.1	2.1	10	0.3	500
E-94	SIDE	FROM 620+00 TO 630+00	24"	0.3	8.1	2.1	10	0.3	500
E-96	SIDE	FROM 620+00 TO 630+00	24"	0.3	8.1	2.1	10	0.3	500
E-98	SIDE	FROM 620+00 TO 630+00	24"	0.3	8.1	2.1	10	0.3	500
E-100	SIDE	FROM 620+00 TO 630+00	24"	0.3	8.1	2.1	10	0.3	500

② ROADWAY

REF. NO.	STATION	TO	FROM	TO	FROM	TO	FROM	TO	TOTAL
I-1	620+00	630+00	620+00	630+00	620+00	630+00	620+00	630+00	512.5
I-2	620+00	630+00	620+00	630+00	620+00	630+00	620+00	630+00	512.5
I-3	620+00	630+00	620+00	630+00	620+00	630+00	620+00	630+00	512.5
I-4	620+00	630+00	620+00	630+00	620+00	630+00	620+00	630+00	512.5
I-5	620+00	630+00	620+00	630+00	620+00	630+00	620+00	630+00	512.5
I-6	620+00	630+00	620+00	630+00	620+00	630+00	620+00	630+00	512.5
I-7	620+00	630+00	620+00	630+00	620+00	630+00	620+00	630+00	512.5
I-8	620+00	630+00	620+00	630+00	620+00	630+00	620+00	630+00	512.5
I-9	620+00	630+00	620+00	630+00	620+00	630+00	620+00	630+00	512.5
I-10	620+00	630+00	620+00	630+00	620+00	630+00	620+00	630+00	512.5
I-11	620+00	630+00	620+00	630+00	620+00	630+00	620+00	630+00	512.5
I-12	620+00	630+00	620+00	630+00	620+00	630+00	620+00	630+00	512.5
I-13	620+00	630+00	620+00	630+00	620+00	630+00	620+00	630+00	512.5
I-14	620+00	630+00	620+00	630+00	620+00	630+00	620+00	630+00	512.5
I-15	620+00	630+00	620+00	630+00	620+00	630+00	620+00	630+00	512.5
I-16	620+00	630+00	620+00	630+00	620+00	630+00	620+00	630+00	512.5
I-17	620+00	630+00	620+00	630+00	620+00	630+00	620+00	630+00	512.5
I-18	620+00	630+00	620+00	630+00	620+00	630+00	620+00	630+00	512.5
I-19	620+00	630+00	620+00	630+00	620+00	630+00	620+00	630+00	512.5
I-20	620+00	630+00	620+00	630+00	620+00	630+00	620+00	630+00	512.5
I-21	620+00	630+00	620+00	630+00	620+00	630+00	620+00	630+00	512.5
I-22	620+00	630+00	620+00	630+00	620+00	630+00	620+00	630+00	512.5
I-23	620+00	630+00	620+00	630+00	620+00	630+00	620+00	630+00	512.5
I-24	620+00	630+00	620+00	630+00	620+00	630+00	620+00	630+00	512.5
I-25	620+00	630+00	620+00	630+00	620+00	630+00	620+00	630+00	512.5
I-26	620+00	630+00	620+00	630+00	620+00	630+00	620+00	630+00	512.5
I-27	620+00	630+00	620+00	630+00	620+00	630+00	620+00	630+00	512.5
I-28	620+00	630+00	620+00	630+00	620+00	630+00	620+00	630+00	512.5
I-29	620+00	630+00	620+00	630+00	620+00	630+00	620+00	630+00	512.5
I-30	620+00	630+00	620+00	630+00	620+00	630+00	620+00	630+00	512.5
I-31	620+00	630+00	620+00	630+00	620+00	630+00	620+00	630+00	512.5
I-32	620+00	630+00	620+00	630+00	620+00	630+00	620+00	630+00	512.5
I-33	620+00	630+00	620+00	630+00	620+00	630+00	620+00	630+00	512.5
I-34	620+00	630+00	620+00	630+00	620+00	630+00	620+00	630+00	512.5
I-35	620+00	630+00	620+00	630+00	620+00	630+00	620+00	630+00	512.5
I-36	620+00	630+00	620+00	630+00	620+00	630+00	620+00	630+00	512.5
I-37	620+00	630+00	620+00	630+00	620+00	630+00	620+00	630+00	512.5
I-38	620+00	630+00	620+00	630+00	620+00	630+00	620+00	630+00	512.5
I-39	620+00	630+00	620+00	630+00	620+00	630+00	620+00	630+00	512.5
I-40	620+00	630+00	620+00	630+00	620+00	630+00	620+00	630+00	512.5
I-41	620+00	630+00	620+00	630+00	620+00	630+00	620+00	630+00	512.5
I-42	620+00	630+00	620+00	630+00	620+00	630+00	620+00	630+00	512.5
I-									