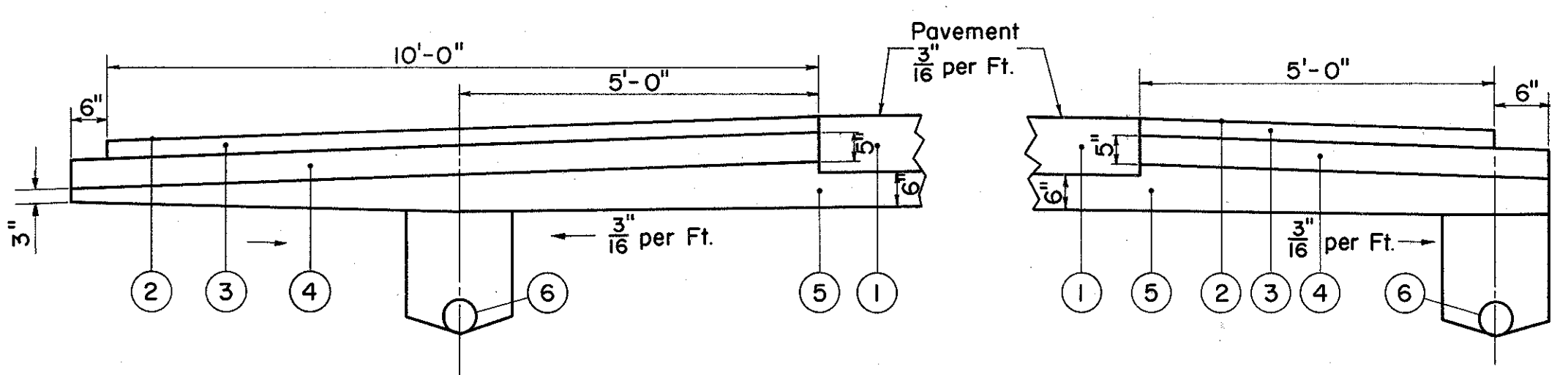
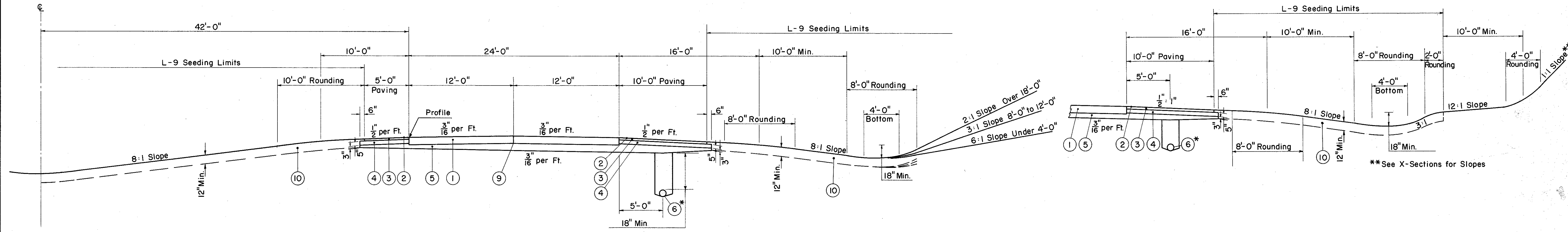
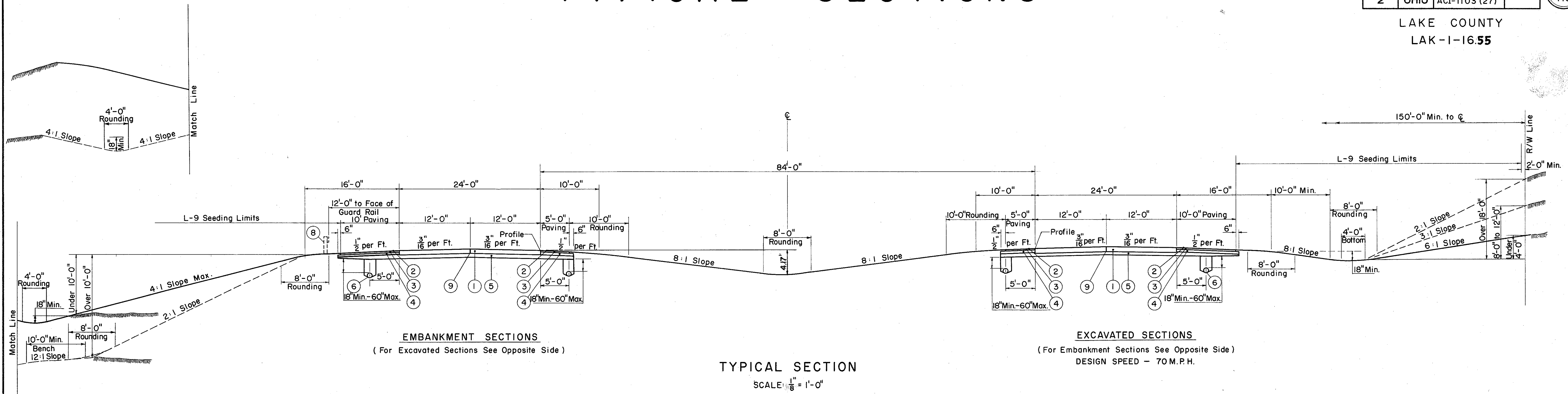


TYPICAL SECTIONS

FED. RD. DIVISION	STATE	PROJECT	
2	OHIO	ACI-1103 (27)	2 413

LAKE COUNTY
LAK-1-16.55



ROCK CUT LIMITING STATIONS
STA. 607 + 00 TO STA. 625 + 25
STA. 628 + 00 TO STA. 630 + 00
STA. 656 + 00 TO STA. 675 + 00

NOTE:
Unpaved areas in the Median, Shoulders and Ditches shall be undercut to a depth of Twelve Inches as shown. Topsoil in sufficient amount to replace the undercut shall be paid for under Item L-1 and shall be placed under Item L-3.

LEGEND

- ① T-71 10" Reinforced Portland Cement Concrete Pavement.
- ② T-31 Bituminous Surface Treatment, 2 Applications.
- ③ B-33 3" Bituminous Macadam Base Course.
- ④ I-18 5" Stabilized Crushed Aggregate Shoulders & Approaches.
- ⑤ I-22 Variable Depth Subbase.
- ⑥ I-4 6" Pipe Underdrain. *Sec. M 6.4 (h) thru Rock Cut.
- ⑦ L-9 Seeding & Protecting Roadway Areas.
- ⑧ I-21 Traffic Divider Type 2
- ⑨ Standard Longitudinal Joint.
- ⑩ L-1 Topsoil Stockpiled &
L-3 Placing Stockpiled Topsoil (See Note).