

GENERAL NOTES

LAKE COUNTY
LAK-90-13.00

85
120

630 SIGN LOCATIONS

SIGN LOCATIONS OF EXISTING AND PROPOSED SIGNS SHOWN ON THE PLANS ARE APPROXIMATE. THE CONTRACTOR PRIOR TO ERECTION OF ALL SIGN SUPPORTS (POST, BEAMS AND OVERHEADS) SHALL STAKE THE PROPOSED LOCATION. INCLUDING OFFSET. OVERHEAD SUPPORT LOCATIONS SHALL ALSO INCLUDE FOUNDATION ELEVATIONS. THE ENGINEER SHALL APPROVE ALL SUPPORT LOCATIONS AND MAY ADJUST THE LOCATION TO CORRECT SLOPE AND SUBSURFACE DIFFICULTIES AND SIGN SIGHT DISTANCE OBSTRUCTIONS, TO IMPROVE SAFETY AND TO ELIMINATE OVERHEAD OBSTACLES.

ITEM 630 - FLATSHEET SIGN INSTALLATIONS

ALL FREEWAY FLATSHEET SIGN INSTALLATIONS NOT BEHIND GUARDRAIL SHALL BE OFFSET 30' FROM THE EDGE OF PAVEMENT WHERE POSSIBLE (EXCEPT AT RAMPS).

ITEM 630 - PREPARATION AND SHIPMENT OF STORED SIGNS

BY TYPE

FLATSHEET AND EXTRUSHEET SIGNS REMOVED AND STORED UNDER OTHER ITEMS OF WORK SHALL BE PROCESSED AND SHIPPED TO THE DISTRICT 12 MAINTENANCE YARD AT EMERY ROAD AND SR-175 IN WARRENSVILLE HEIGHTS, OHIO.

PROCESSING OF FLATSHEET SIGNS SHALL INCLUDE THE STACKING AND BANDING TOGETHER OF SIMILAR SIZE SIGNS INTO 150 POUNDS (MAXIMUM) BUNDLES. BANDING SHALL BE WITH TWO STEEL STRAPS AND CLIPS PLACED PERPENDICULAR TO EACH OTHER. FLATSHEET SIGNS WEIGH APPROXIMATELY 1.25 POUNDS PER SQUARE FOOT. BUNDLES SHALL BE LOADED ONTO WOODEN PALLETTS APPROXIMATELY 4'X4'. SIGN BUNDLES SHALL ALSO BE Banded TO THE PALLETTS. LOADED PALLETTS SHALL HAVE A MAXIMUM WEIGHT OF 1000 POUNDS. PROCESSING OF EXTRUSHEET SIGNS SHALL INCLUDE THE CAREFUL REMOVAL OF ALL DEMOUNTABLE COPY AND THE DISASSEMBLY OF THE SIGN INTO PANELS NO WIDER THAN 4 FEET. DEMOUNTABLE COPY AND SIGN HARDWARE SHALL BE SUITABLY PACKAGED SUCH AS IN BURLAP BAGS FOR SHIPMENT. EXTRUSHEET PANELS OF SIMILAR LENGTHS SHALL BE Banded TOGETHER INTO A BUNDLE WEIGHING NO MORE THAN 1000 POUNDS. BANDING SHALL BE WITH A MINIMUM OF 2 STEEL STRAPS AND CLIPS AND SHALL BE SPACED NO MORE THAN 5 FEET APART. EXTRUSHEET SIGNS WEIGH APPROXIMATELY 2.25 POUNDS PER SQUARE FOOT. BUNDLES SHALL BE LOADED ONTO WOODEN PALLETTS APPROXIMATELY 4'X4'. SIGN BUNDLES SHALL BE Banded TO THE PALLETTS. LOADED PALLETTS SHALL HAVE A MAXIMUM WEIGHT OF 1000 POUNDS.

THE DISTRICT 12 TRAFFIC ENGINEER SHALL BE NOTIFIED AT LEAST 3 WORKING DAYS PRIOR TO THE DELIVERY OF THE SIGNS TO THE MAINTENANCE YARD.

THE SIGNS SHALL BE TRANSPORTED BY THE CONTRACTOR TO THE MAINTENANCE YARD WHERE THEY WILL BE UNLOADED AND STORED. A FORK LIFT OR CRANE OF 1000 POUND CAPACITY MAY BE PROVIDED BY THE STATE TO THE CONTRACTOR FOR UNLOADING.

PAYMENT WILL BE AT THE CONTRACT UNIT PRICE PER EACH SIGN INCLUDING ALL LABOR, EQUIPMENT, BANDING MATERIAL, PALLETTS, TRANSPORTATION, AND MISCELLANEOUS MATERIAL NECESSARY TO PERFORM THE WORK. THE FOLLOWING ESTIMATED QUANTITY HAS BEEN INCLUDED IN THE GENERAL SUMMARY TO BE USED AS OUTLINED ABOVE:

ITEM 630 - PREPARATION AND SHIPMENT OF STORED SIGNS, FLAT SHEET 179 EACH

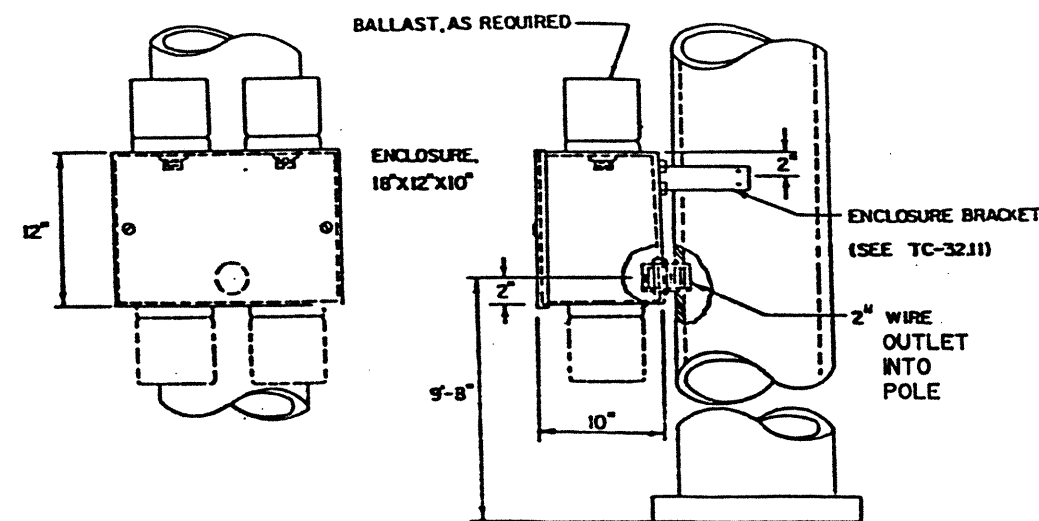
ITEM 630 - PREPARATION AND SHIPMENT OF STORED SIGNS, EXTRUSHEET 27 EACH

FORMER CONSTRUCTION PLANS

FOR EXISTING SIGNING DETAILS REFER TO APPLICABLE PLANS LISTED BELOW:

COUNTY, ROUTE & SECTION	FEDERAL NO.	PROJECT NO.
LAK-1-12.89	I-90-1(26)31	2-60
LAK-90-3.56	I-90-1(88)46	719-73

BALLAST ENCLOSURE, TYPE B



ITEM 630 - SIGNS, FLAT SHEET, TYPE G SHEETING, AS PER PLAN

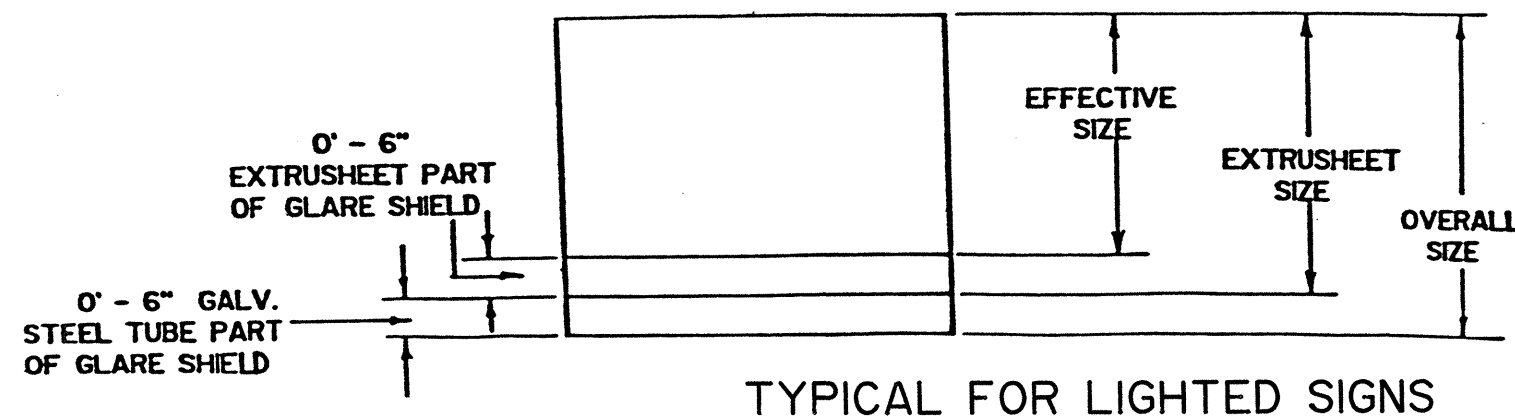
IN ADDITION TO ITEM 630 FOR SIGNS, FLAT SHEET, TYPE G SHEETING THE FOLLOWING REQUIREMENTS PERTAIN TO "WATCH FOR ICE ON BRIDGE" SIGNS W-68-48.

1. THE SIGN SHALL BE HINGED WITH 8" LENGTH OF 1 1/2" BRASS-PLATED HINGE WHICH IS RIVETED TO EACH SECTION OF THE SIGN AND THEN COVERED WITH FLAT SHEET, TYPE G SHEETING.
2. SIGN SHALL BE MOUNTED ON TWO NUMBER 3 DRIVE POSTS.
3. BASIS OF PAYMENT: PAYMENT WILL BE MADE AT CONTRACT PRICE BID FOR:

ITEM	UNIT	DESCRIPTION
630	SQ. FT.	SIGNS, FLAT SHEET, TYPE G SHEETING, AS PER PLAN
		W-68-48



SEE STANDARD CONSTRUCTION DRAWINGS TC-52.10 FOR DIMENSIONS AND BOLT DIAMETERS



TYPICAL FOR LIGHTED SIGNS