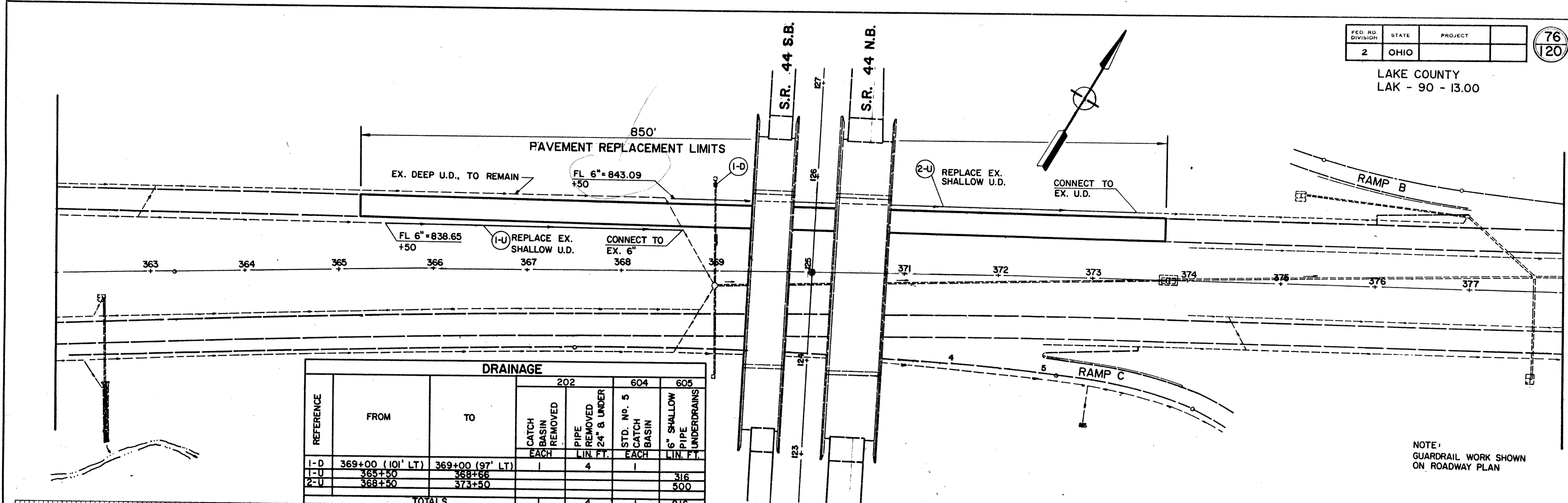
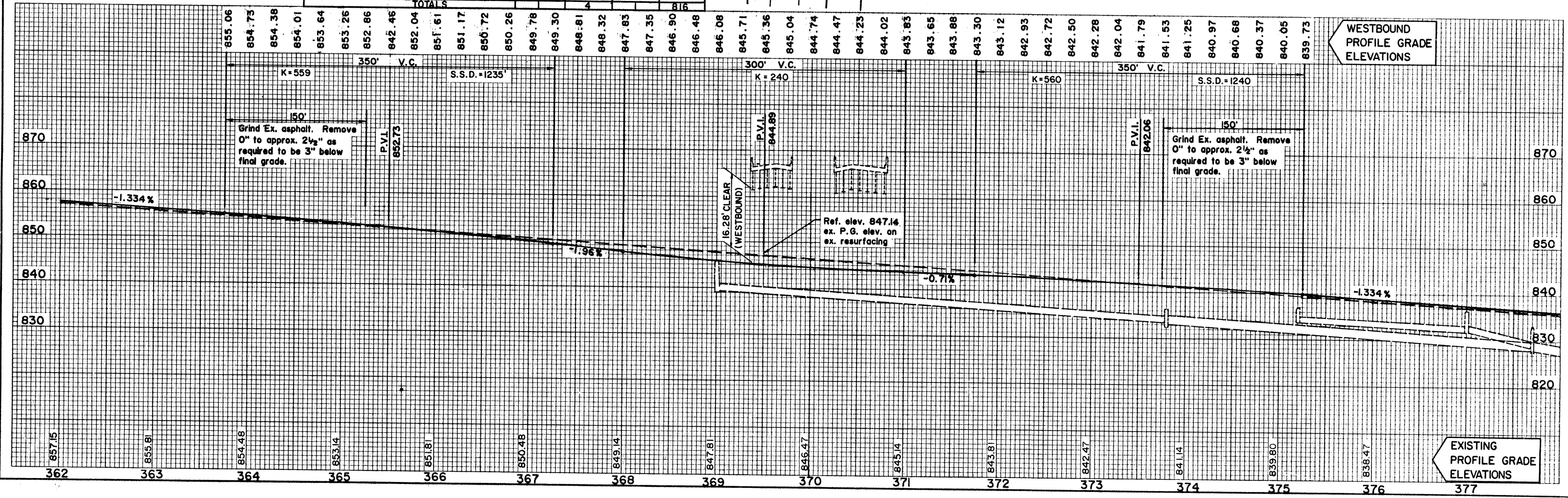


LAKE COUNTY  
LAK - 90 - 13.00



DRAINAGE					
REFERENCE	FROM	TO	202		604
			CATCH BASIN REMOVED EACH	PIPE REMOVED 24" & UNDER LIN. FT.	STD. No. 5 CATCH BASIN EACH
I-D	369+00 (101' LT)	369+00 (97' LT)		4	
I-U	365+50	368+66			316
2-U	368+50	373+50			500
TOTALS				4	816

NOTE: GUARDRAIL WORK SHOWN ON ROADWAY PLAN



PAVEMENT LOWERING WESTBOUND, STA. 362+00 TO STA. 378+00