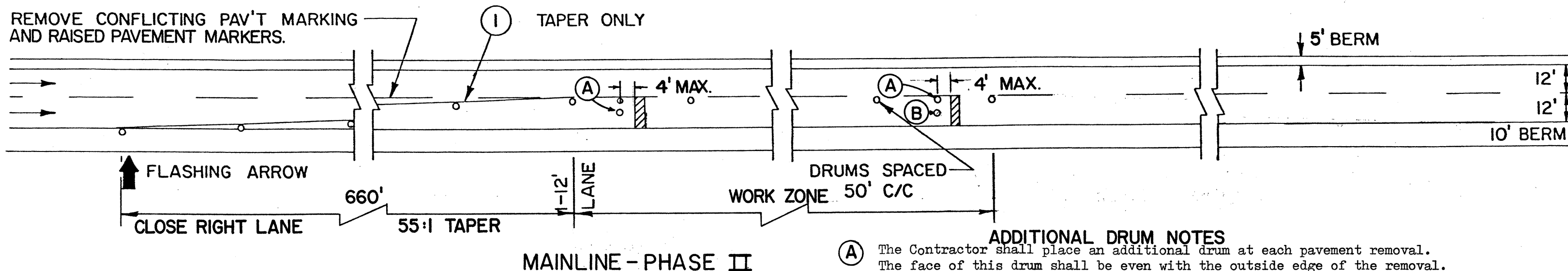


# MAINTAINING TRAFFIC MAINLINE

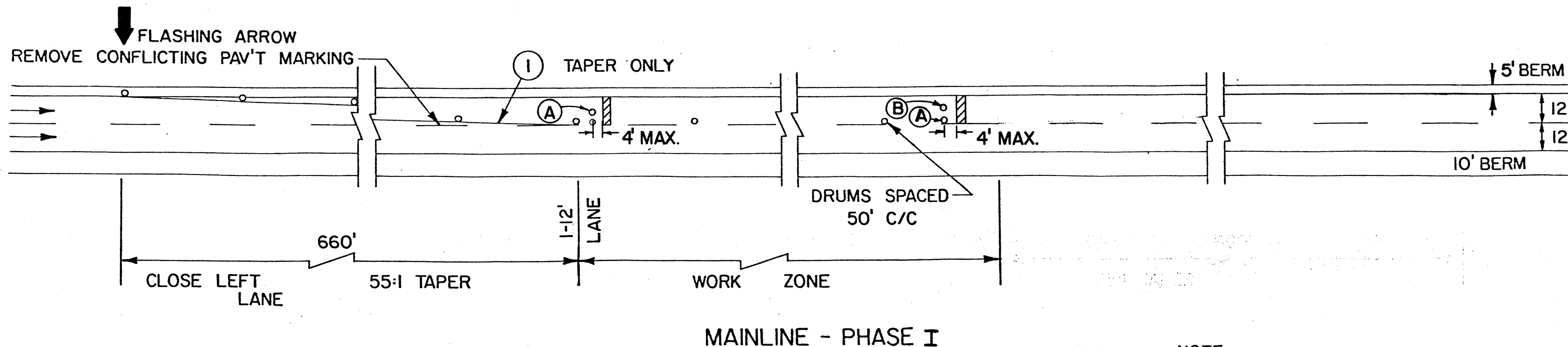
PLAN NO.    
LAKE COUNTY  
LAK-90-13.00

23  
120

① - TEMPORARY EDGE LINE CLASS I



- ADDITIONAL DRUM NOTES**
- Ⓐ The Contractor shall place an additional drum at each pavement removal. The face of this drum shall be even with the outside edge of the removal. The drum shall remain in place until traffic is returned to this lane of pavement.
  - Ⓑ If the pavement removal is more than 6' - 0" long, additional drums shall be placed every 6' - 0" from the outside edge of the removal. These drums shall remain in place until traffic is returned to this lane of pavement.



**MAINLINE (PHASE III) - BOTH LANES OPEN TO TRAFFIC**

NOTE:  
FOR ADVANCE WARNING SIGNS SEE  
SHEET N<sup>o</sup> 22