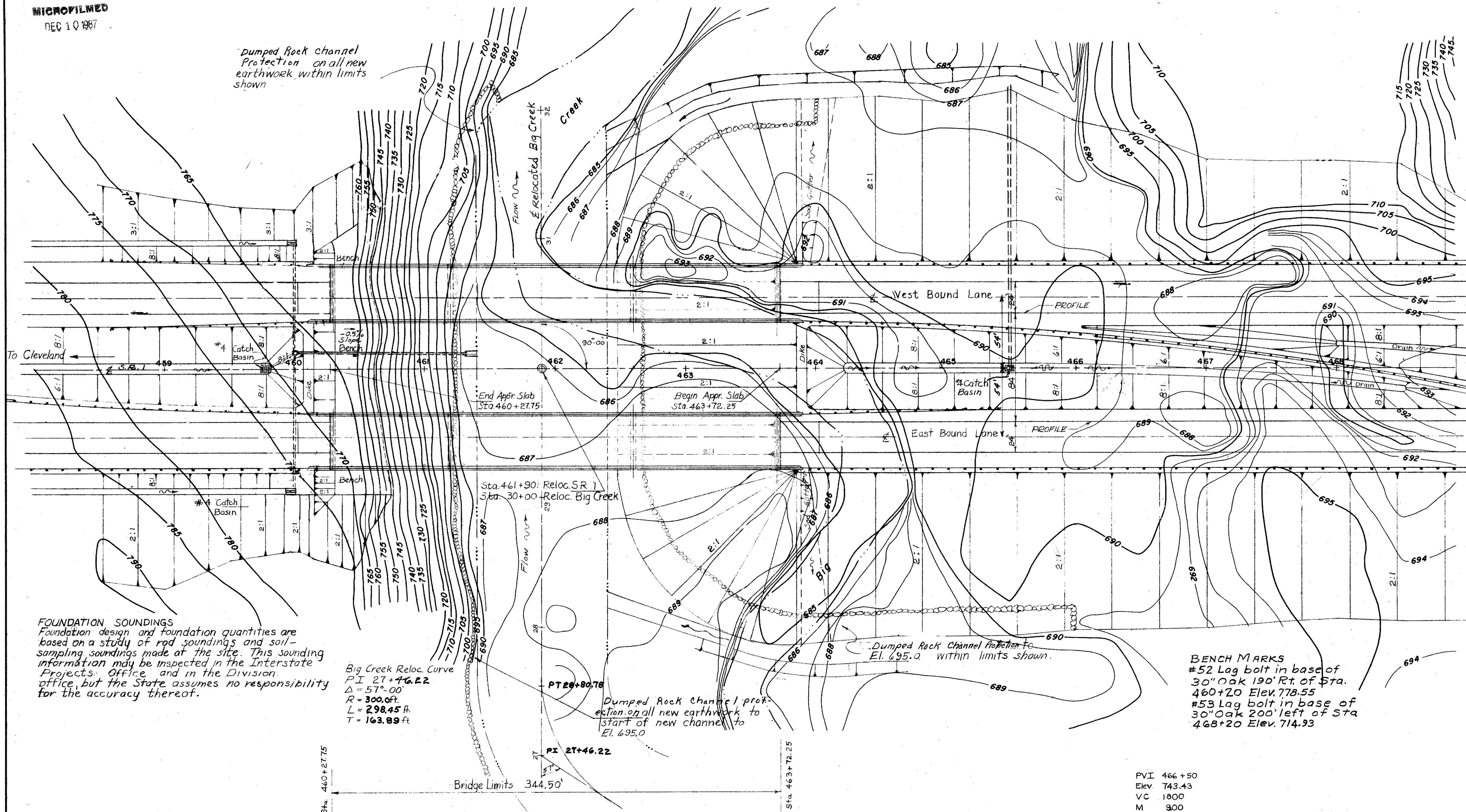
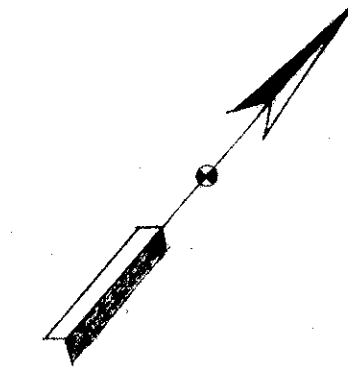


MICROFILMED  
DEC 10 1987

FED. RD. DIVISION	STATE	PROJECT	
2	OHIO	ACI-1103(21)	453 498

LAKE COUNTY  
LAK-1-12.89

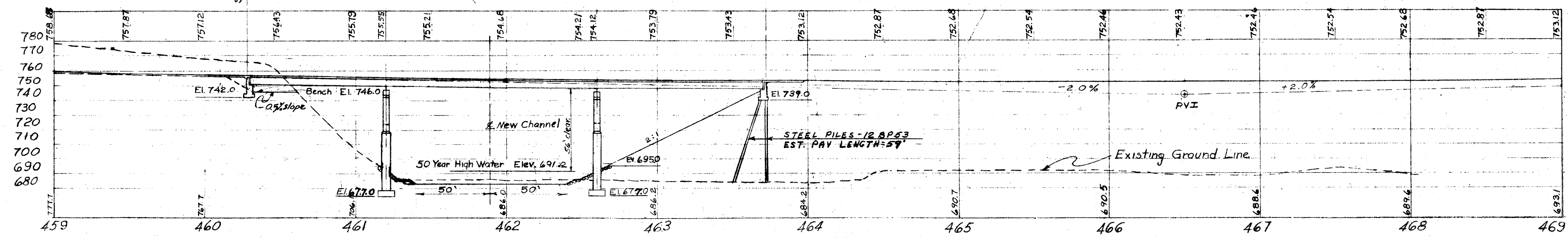


BRIDGE AT NEAREST CROSSING DOWNSTREAM  
Single Span Steel Girders Span 78'  
Skew 90° Width 26' Clearance 13'  
Wearing Surface 4x6 Plank on 4" Sub  
Stone Abutments & Footings

BRIDGE AT NEAREST CROSSING UPSTREAM  
Single Span Pony Truss Span 98'  
Skew 60° Width 24' Clearance 12'-6"  
Wearing Surface 4x6 Plank Covered With Asphalt  
Cut Stone Abutments with Concrete Caps

PROPOSED STRUCTURE  
Type - Continuous Plate Girder With Reinforced Concrete Deck & Substructure  
Span 90'-0"; 140'-0"; 110'-0" c.c. bearing  
Roadway 42'-0" F/F of 1'-0" Parapets  
Load Frequency CF = 2000 (Adequate for AASHTO Skew 0°-00'-00" (Alternate Loading Wearing Surface 1" Monolithic Concrete Approach Slabs 25'-0" Long, Standard AS-1-54 Alignment = tangent

Note:  
All grading shall be done in accordance with the road plan.



Drainage Area - 31 Square Miles

SEC. C-32 FED. AID PROJ. NO. ACI-1103 (21)

PREPARED BY  
CAPITOL ENGINEERING ASSOCIATES, DILLSBURG, PA.  
FOR  
STATE OF OHIO  
DEPARTMENT OF HIGHWAYS

SITE PLAN  
BRIDGE NO. LAK-1-1542  
S.R.I. OVER BIG CREEK  
LAKE COUNTY  
STA. 461+90.00

DESIGNED	DRAWN	TRACED	CHECKED	REVISED DATE	REVISED
JRC	JRC				