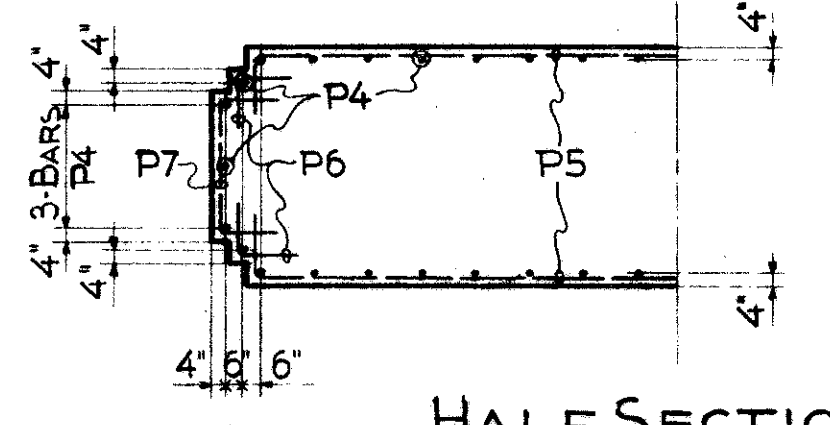
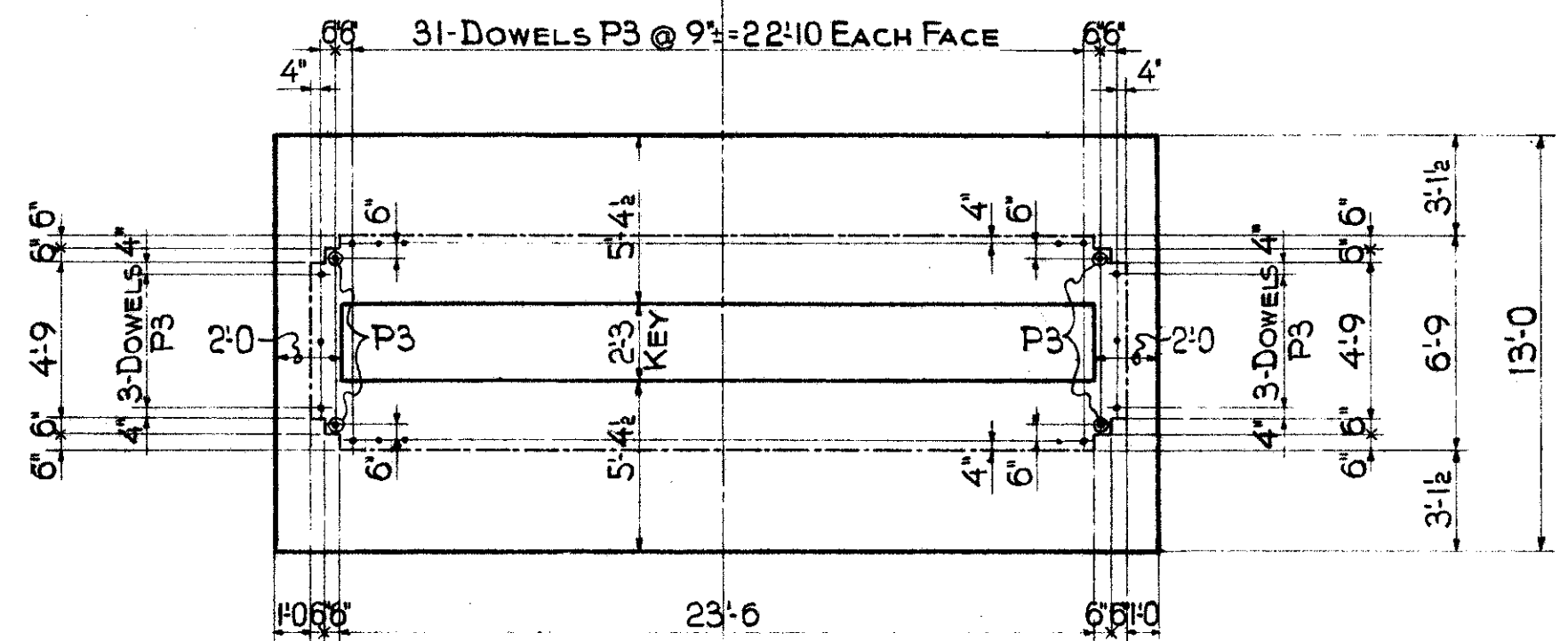
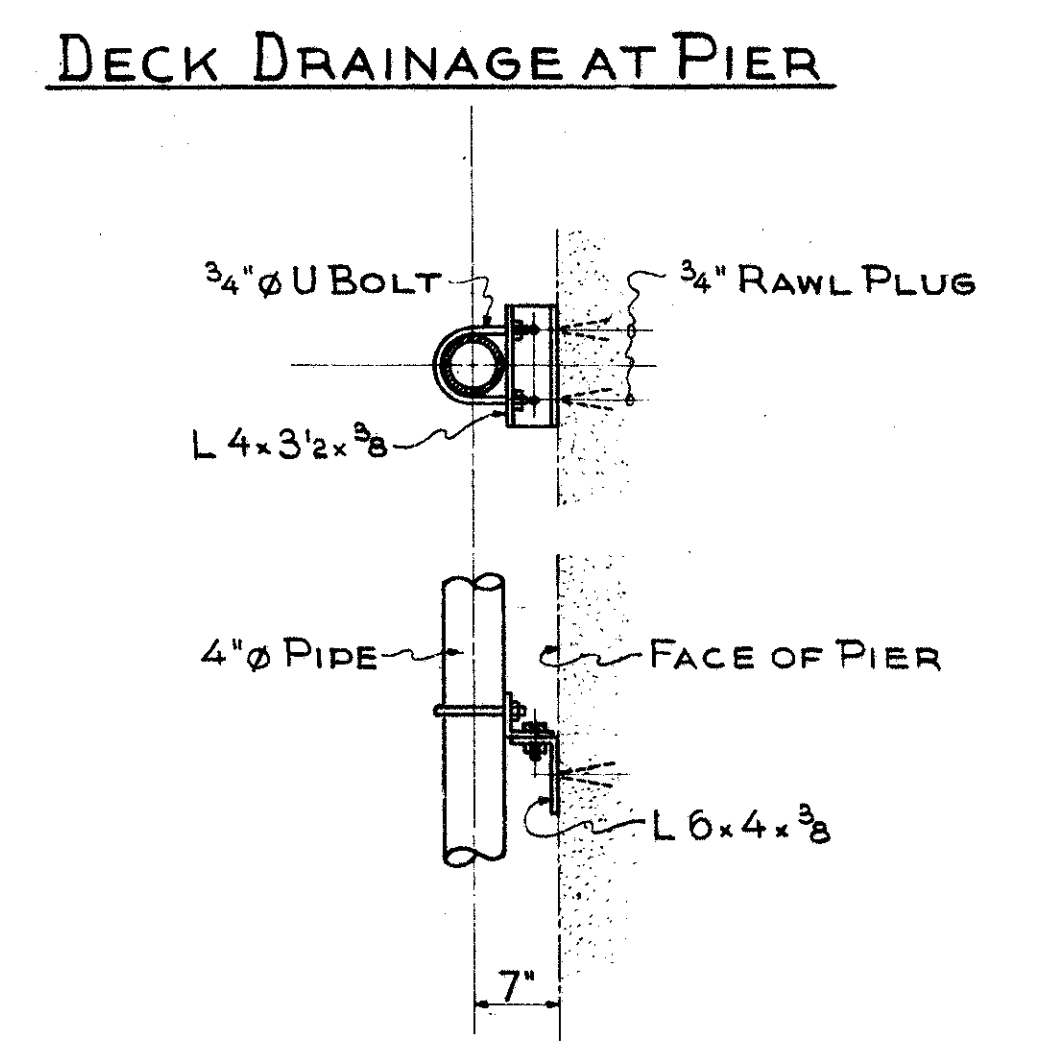
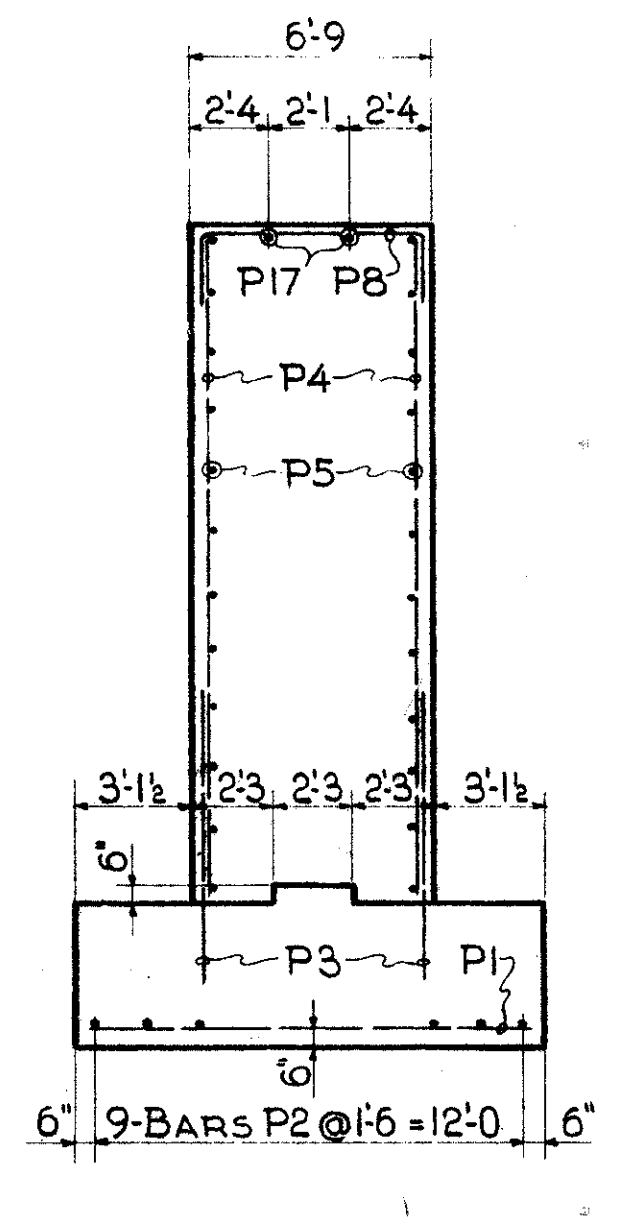
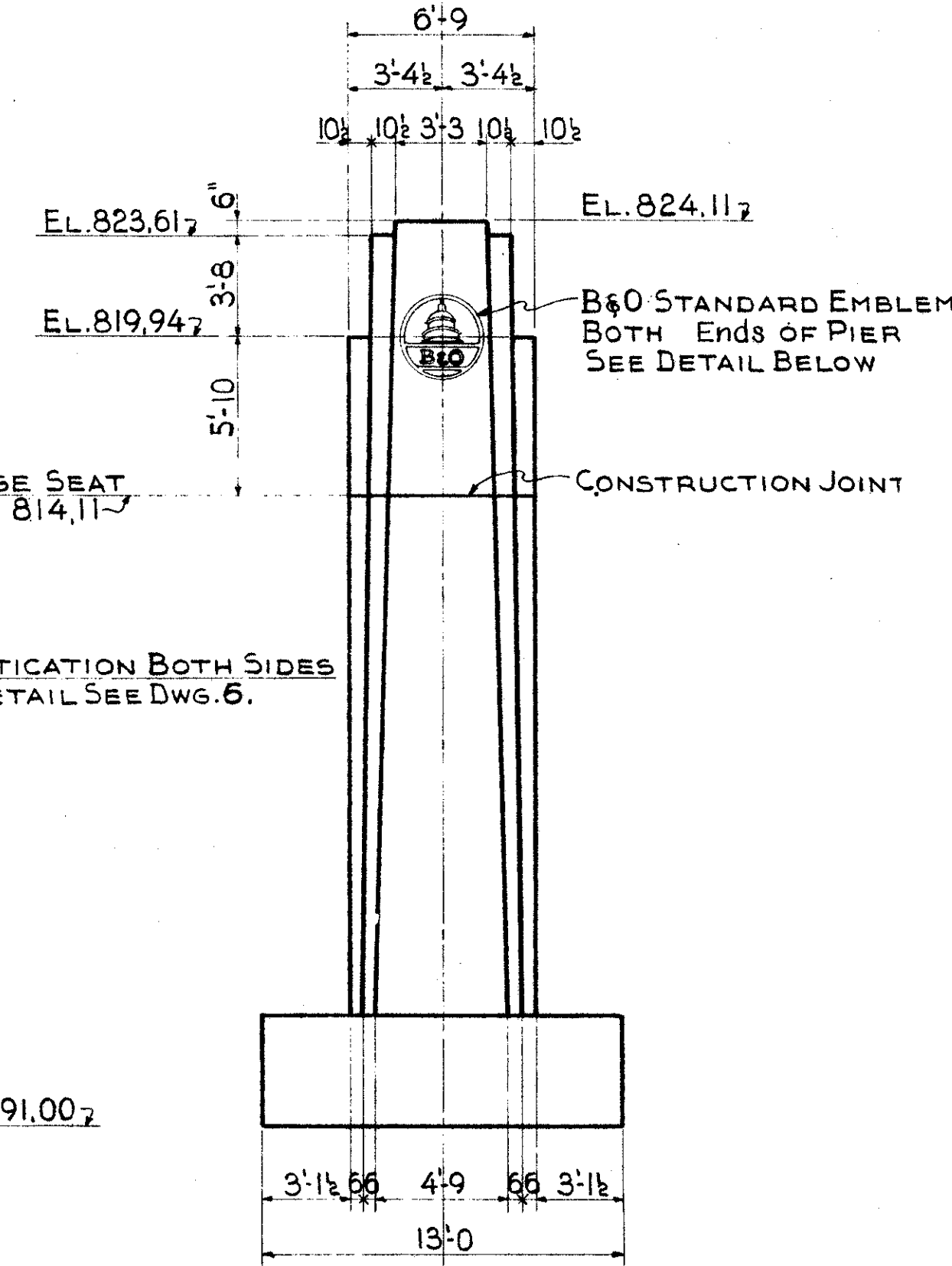
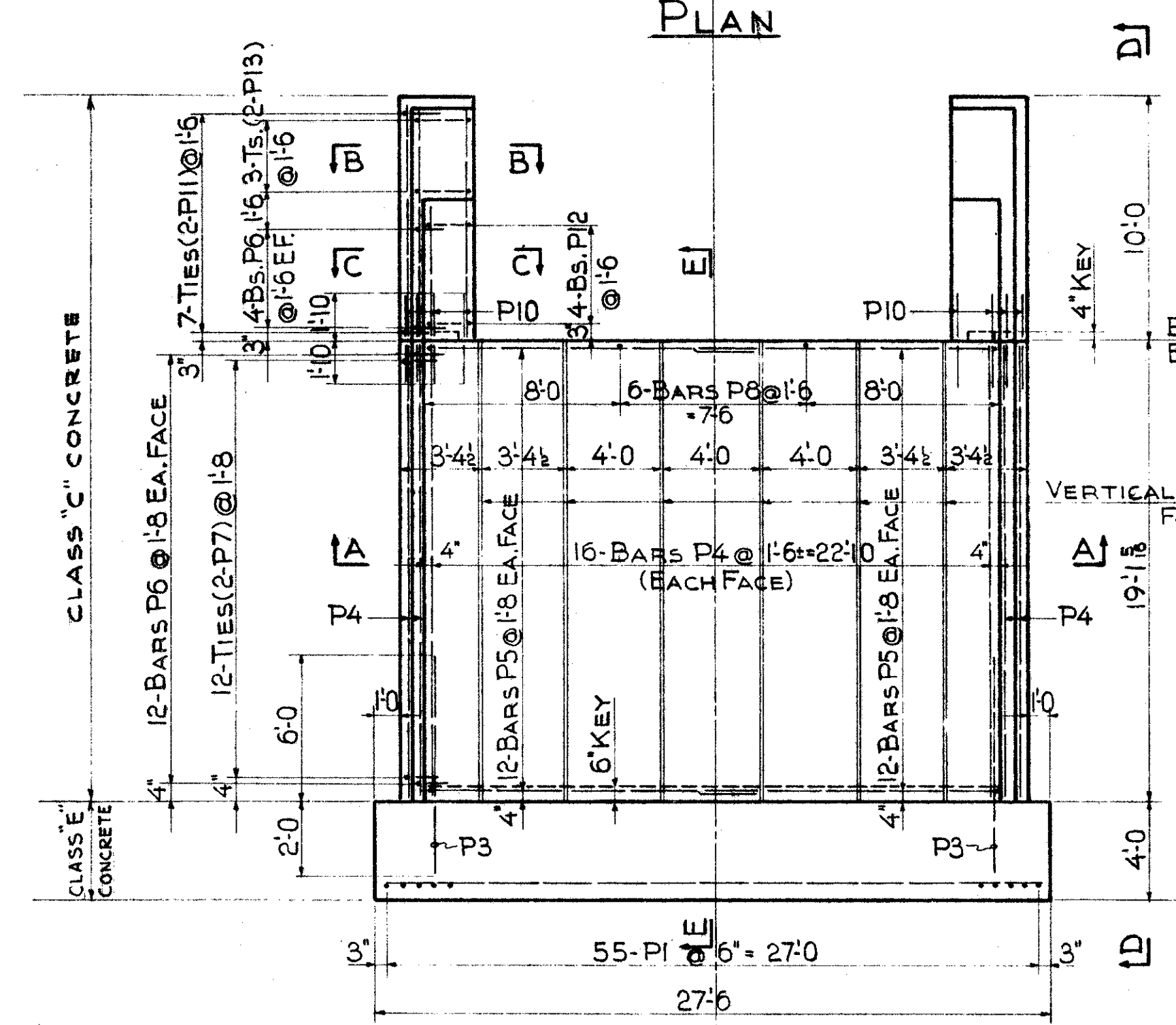
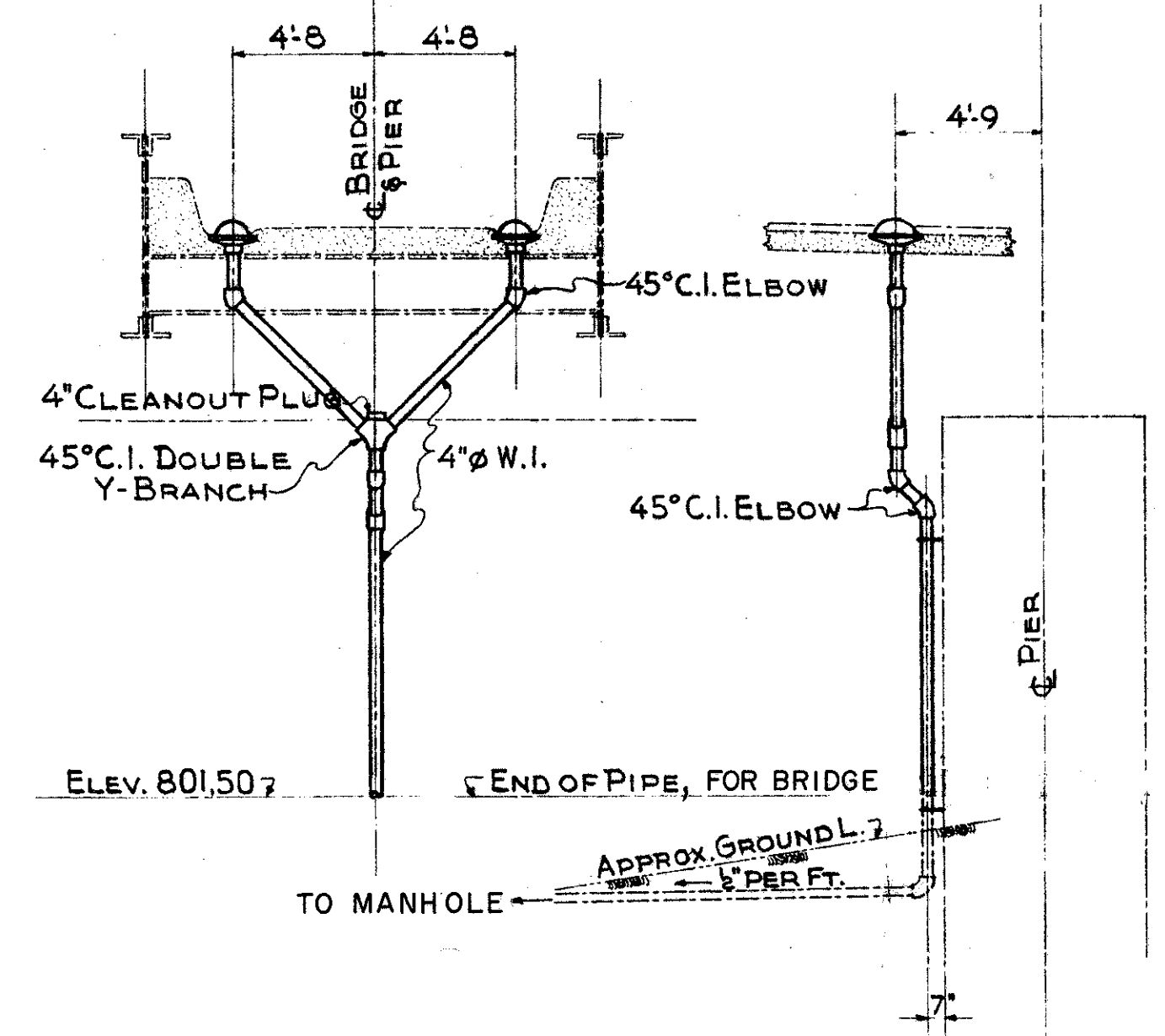
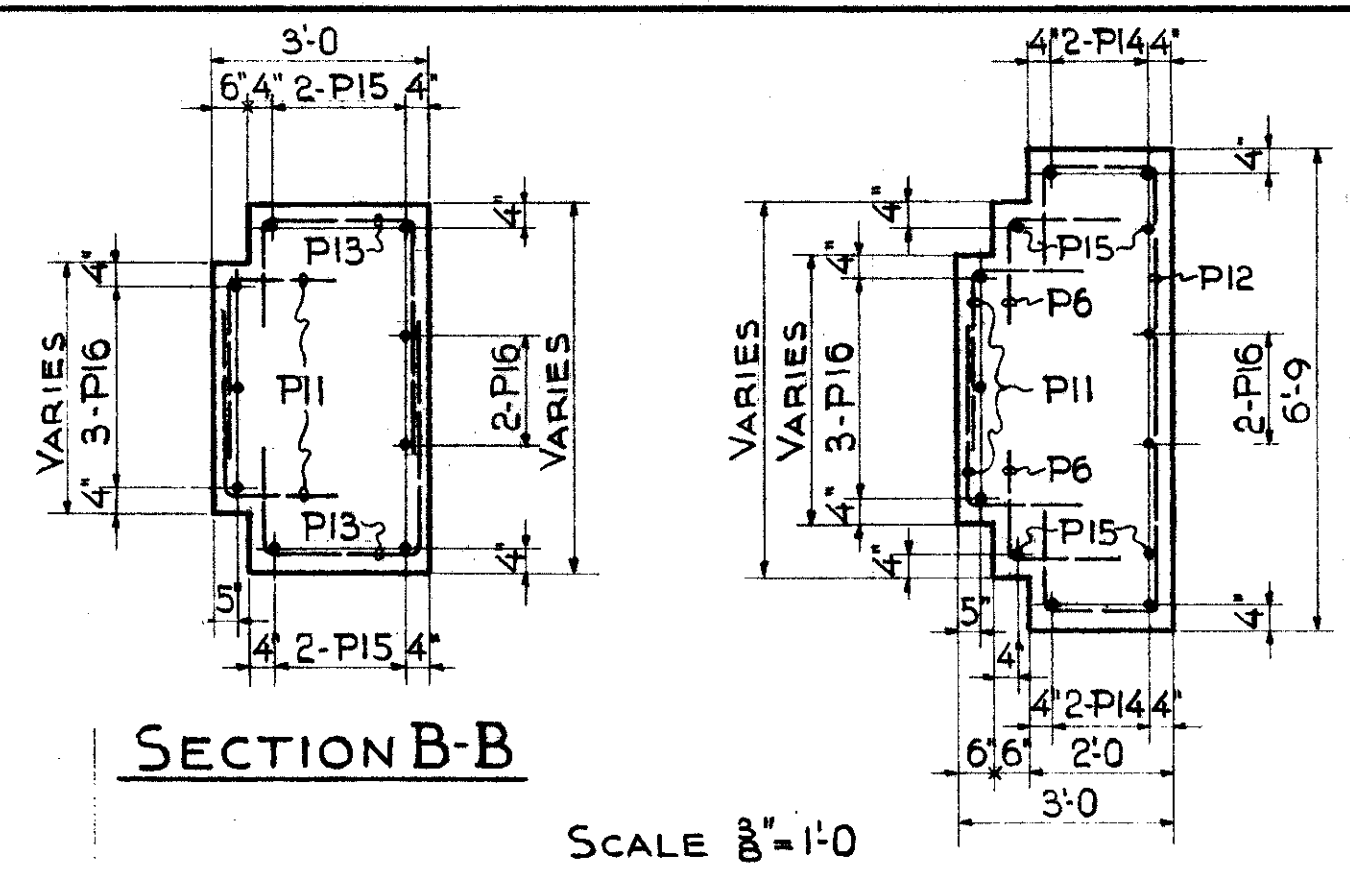
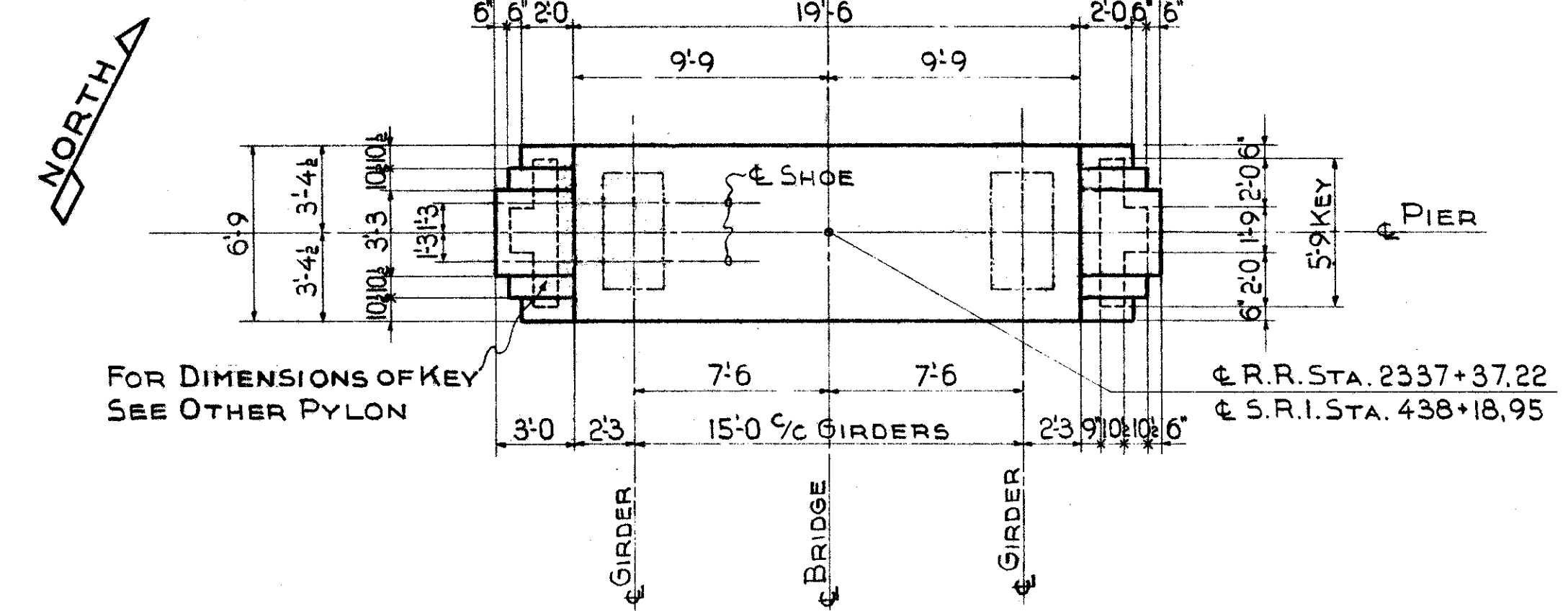


LAKE COUNTY
SEC. LAK-1-12.89

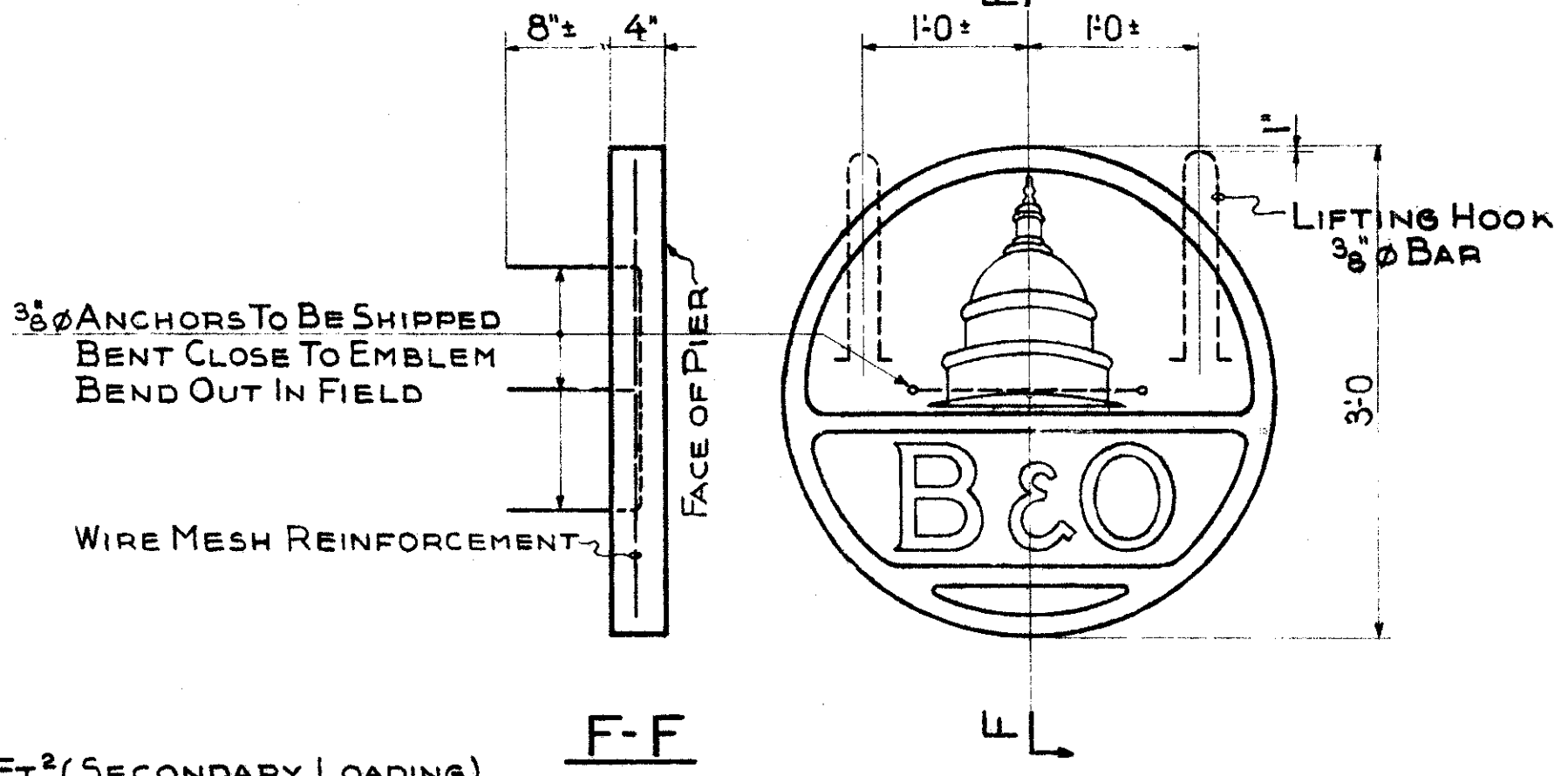
BILL OF REINFORCING BARS-SUBSTRUCT.

MARK	NO	SIZE	LGTH	REMARKS	WGHT	BENDING DIAGRAMS
P1	55	#6	12-3	STR.	1012	
P2	9	"	27-0	"	365	
P3	72	"	8-0	"	865	
P4	42	"	18-9	STR.	1183	
P5	48	"	14-6	BENT	1045	
P6	64	"	3-0	"	289	
P7	48	"	4-6	"	324	
P8	6	#6	9-9	BENT	88	
P10	26	#6	3-8	STR.	143	
P11	28	"	4-0	BENT	168	
P12	8	"	12-1 1/2	"	146	
P13	12	"	6-8 1/2	BENT	121	
P14	8	"	5-6	STR.	66	
P15	8	"	9-3	"	112	
P16	10	"	9-9	"	147	
P17	2	#6	8-6	STR.	26	
REPLACEMENT BARS					27	
TOTAL WEIGHT					6127	LBS.



Max. SOIL PRESSURE = 6.8 TONS/FT² (SECONDARY LOADING)
Avg. SOIL PRESSURE = 3.4 TONS/FT²

SCALE 3/8" = 1'-0" (UNLESS NOTED)



CAST STONE EMBLEM
FOR LARGE DETAIL SEE DWG. 9.
FOR LOCATION SEE VIEW D-D
LIFTING WEIGHT 350#

NOTE: DRAINS, W.I. PIPE, FITTINGS AND SUPPORTS TO BE INCLUDED WITH STRUCT. STEEL (ITEM S107) FOR PAYMENT.

SEC. C-32 FED. AID PROJ. NO. ACI-1103(21)

PREPARED BY
CAPITOL ENGINEERING ASSOCIATES, DILLSBURG, PA.
FOR

STATE OF OHIO
DEPARTMENT OF HIGHWAYS

BRIDGE NO. LAK-1-1501
S.R.I. UNDER B&O RAILROAD
LAKE COUNTY
SEC. LAK-1-11.59 STA. 438+18.95
CENTER PIER

DESIGNED	DRAWN	TRACED	CHECKED	REVISED	DATE	REVISED
F.H.L.	RLM	CEF	F.A.M.			