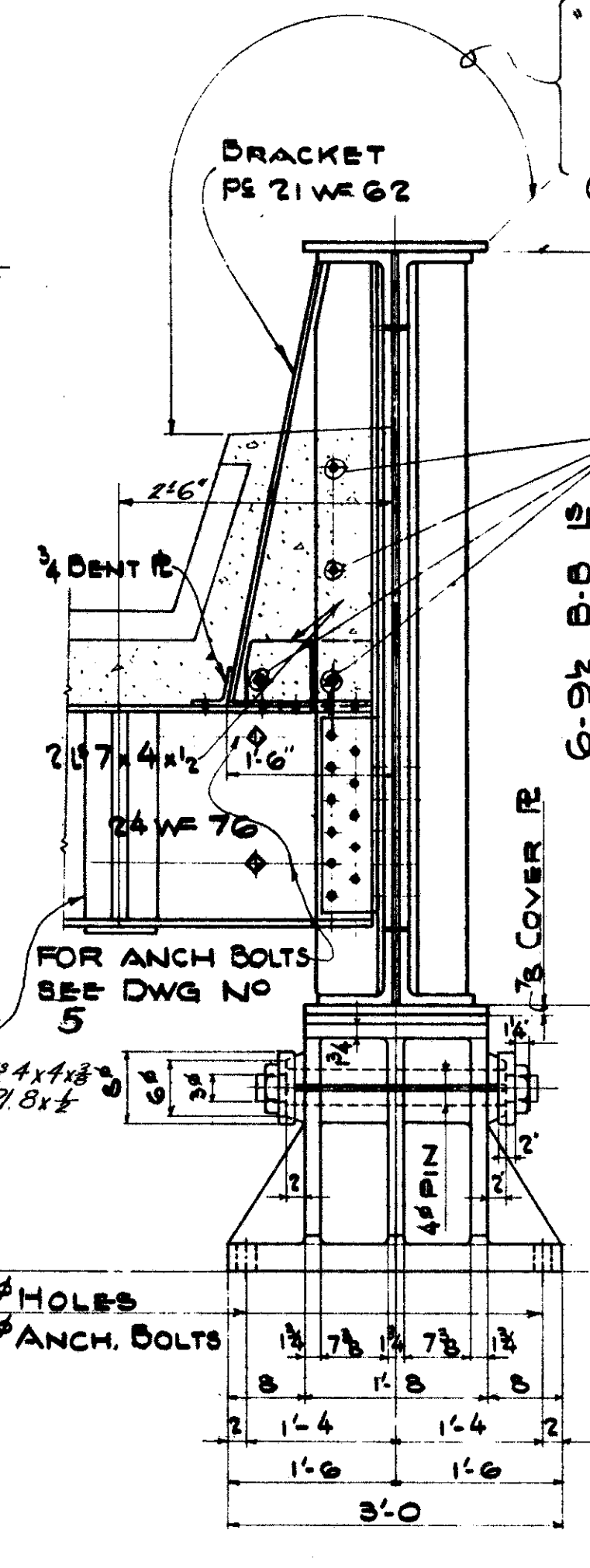
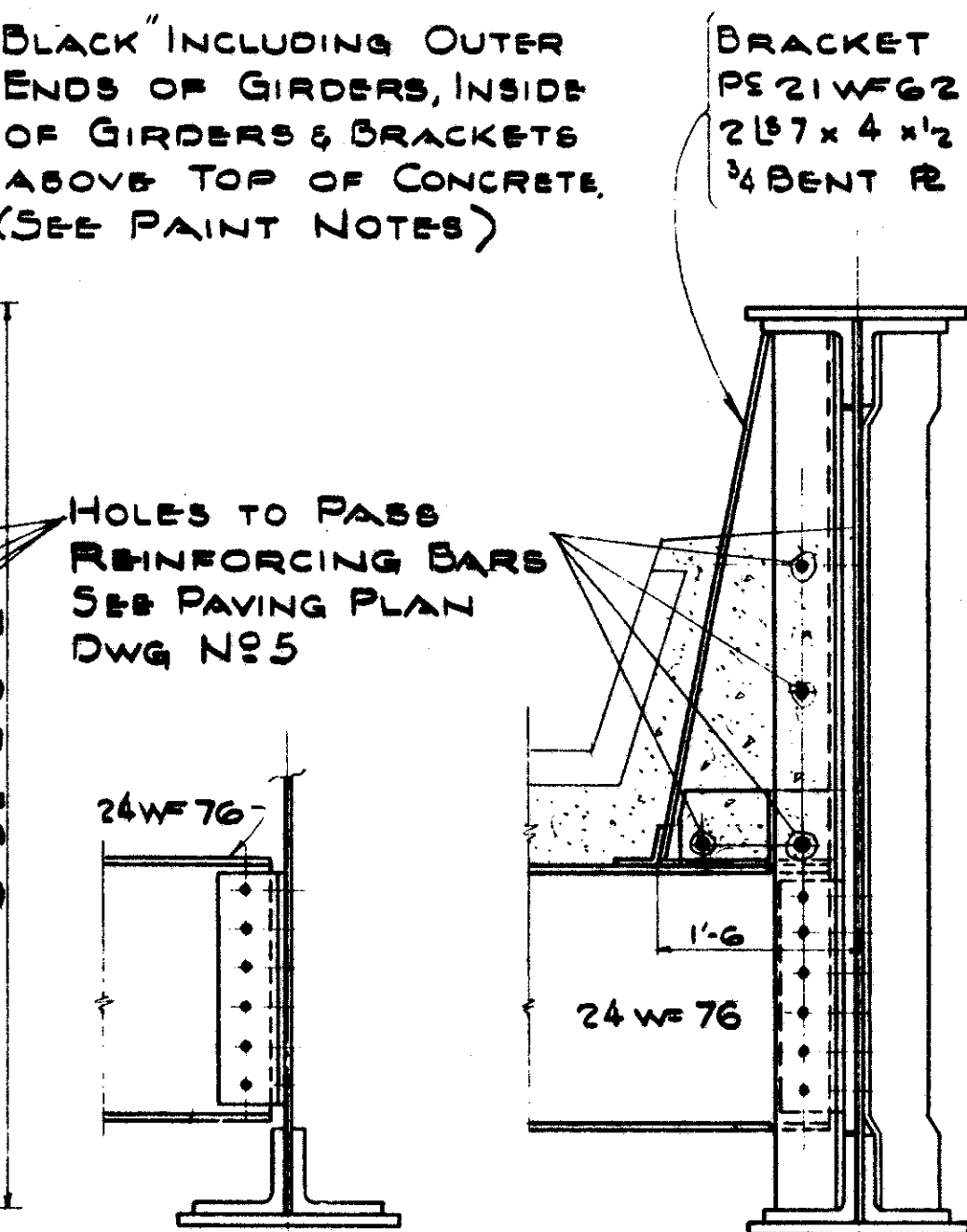


GIRDER & BEARING DETAILS AT PIER  
(FIXED SHOE)



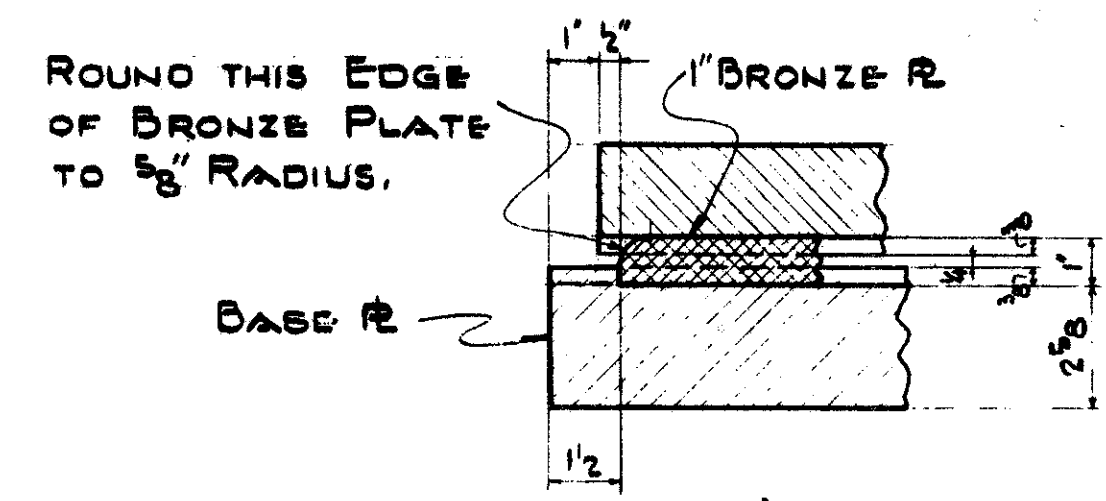
SECTION 'A-A'



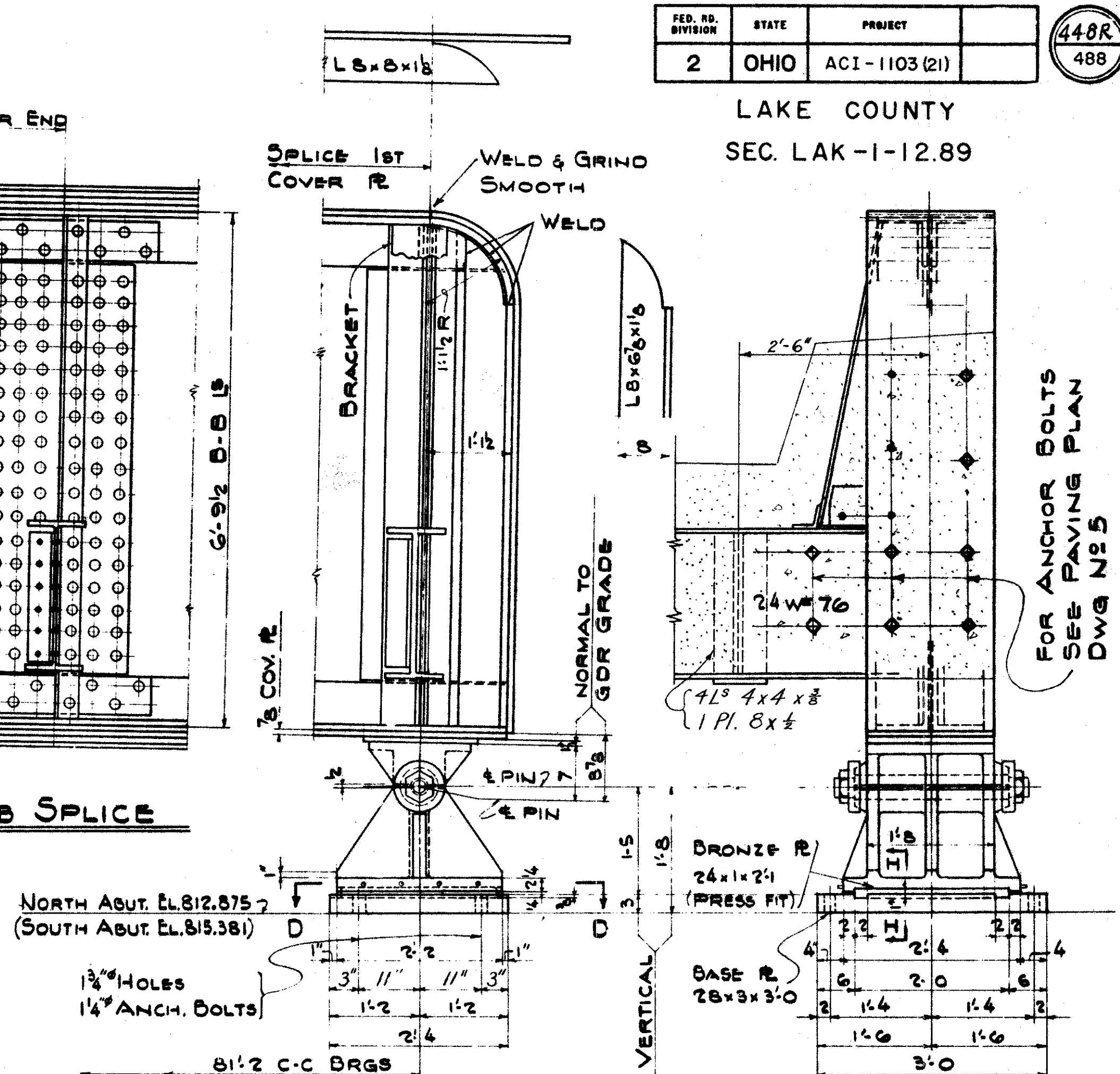
SECT. 'B-B'

SECT. 'C-C'

TYPICAL WEB SPLICE



SECTION 'H-H'  
-SCALE: 3\"/>

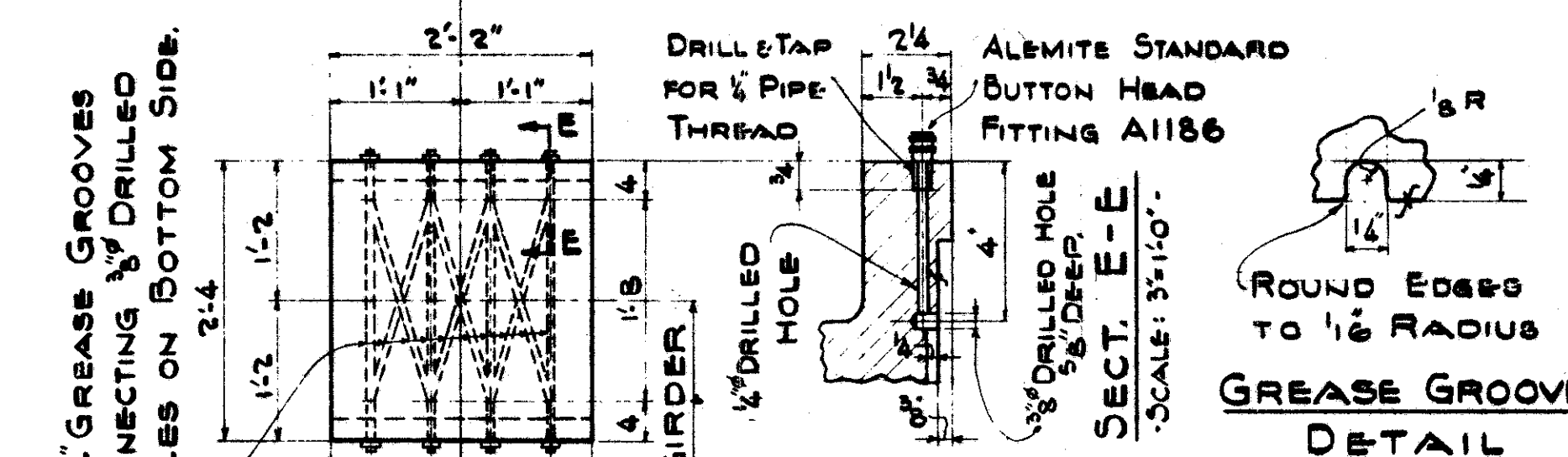


GIRDER & BEARING DETAILS AT ABUTMENT  
(EXPANSION SHOE)

FOR DETAILS & DIM. NOT SHOWN SIMILAR TO DETAILS AT PIER

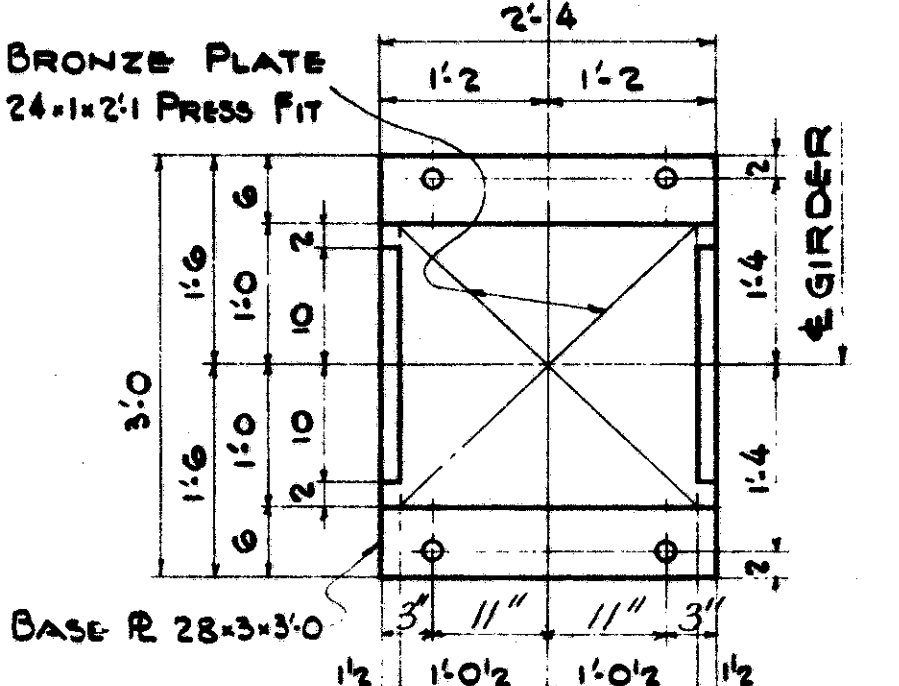
**SHOE NOTES**

TOP AND BOTTOM SHOES SHALL BE OF CAST STEEL.  
BRONZE PLATES ARE TO BE FLAT, SMOOTH, AND TRUE TO DIMENSIONS, AND ARE TO BE PRESS-FITTED INTO RECESSES IN BASE PLATES IN THE SHOP, CARE BEING TAKEN TO OBTAIN GOOD BEARING ON THE BOTTOM OF RECESSES.  
BASE PLATE ASSEMBLIES TO BE SHIPPED SO THAT BRONZE PLATES ARE HELD IN PLACE, AND FINISHED SURFACES PROTECTED AGAINST DAMAGE.  
FINISHED SURFACES OF PINS, PIN HOLES, AND BRONZE BEARING SURFACES OF STEEL CASTINGS TO BE COATED WITH WHITE LEAD AND TALLOW IN THE SHOP.  
ALL FILLETS OF CASTINGS TO BE 3/4\"/>



SECTION 'D-D'

GREASE GROOVE  
DETAIL



PLAN OF BASE PLATE

**NOTES**  
WEBS OF FLOOR BEAMS & GIRDER STIFFENER  $I_b$  SHALL BE SET NORMAL TO BACK OF BOTTOM FLANGE  $I_f$  OF GIRDERS.  
FOR FRAMING PLAN, GIRDER MAT'L. & DESIGN DATA SEE SHT NO 3

SEC. C-32 FED. AID PROJ. NO. ACI-1103(21)  
PREPARED BY  
CAPITOL ENGINEERING ASSOCIATES, DILLSBURG, PA.  
FOR  
STATE OF OHIO  
DEPARTMENT OF HIGHWAYS

BRIDGE NO. LAK-1-1501  
S.R. UNDER B&O RAILROAD  
LAKE COUNTY  
SEC. LAK-1-11.59 STA. 438+18.95  
**STEEL DETAILS**

DESIGNED	DRAWN	TRACED	CHECKED	REVISED	DATE	REVISED
FHL	ALD	ALD	FAMUSS			9-24-58

This sheet is to be used for construction and supersedes Sheet No. 448 of the original plans.  
9-24-58