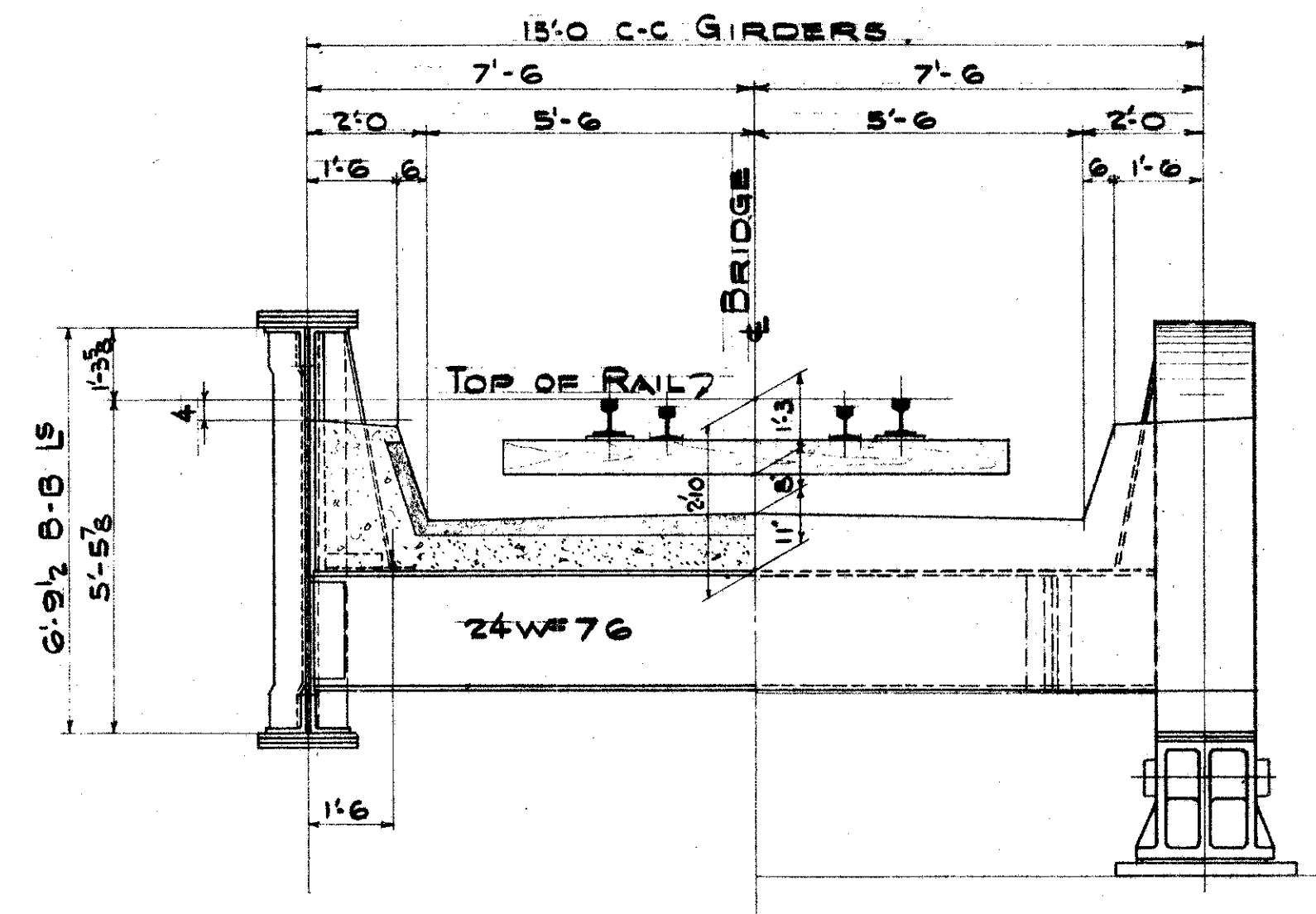
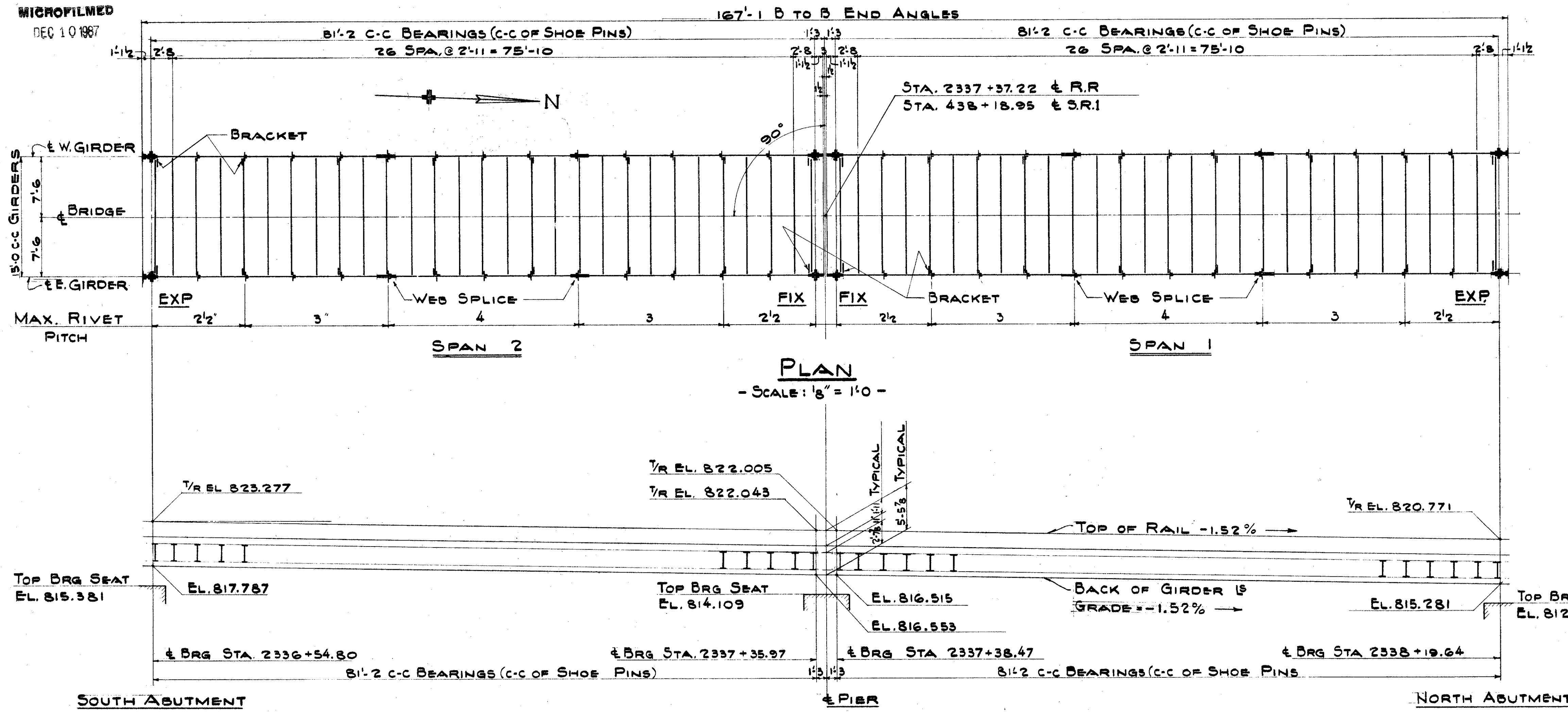


MICROFILMED
DEC 10 1987

FED. RD. DIVISION	STATE	PROJECT	447 488
2	OHIO	ACI-1103 (21)	

LAKE COUNTY
SEC. LAK-1-12.89



HALF SECTION HALF END VIEW

SECTION ON & BRIDGE

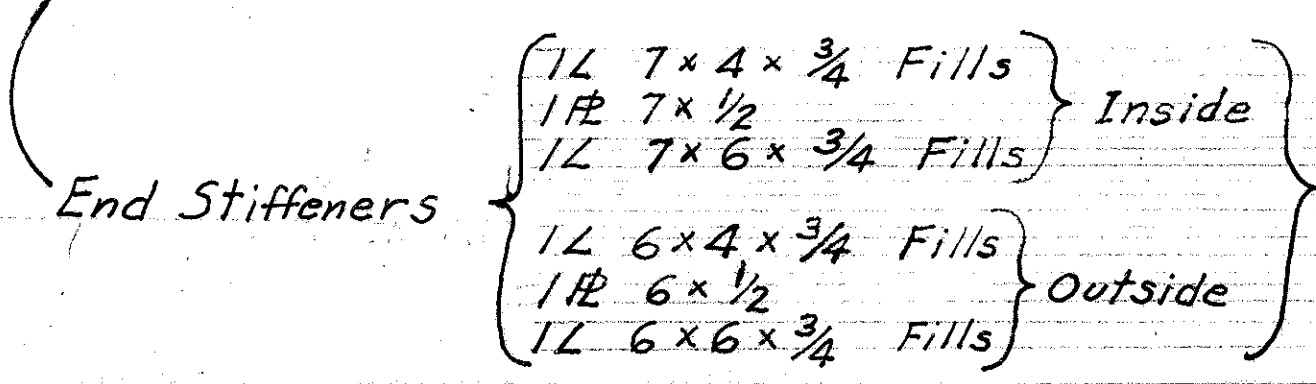
GIRDERS

83'-5 B.TO B. END ANGLES, 81'-2 C-C BEARINGS, 6'-9 1/2 B.TO B. FLG. 15'.
 MAX. END SHEAR = 560,000 LB.
 $560,000 \div 11,000 = 51.0 \text{ SQ IN. REQ'D.}$
 WEB $81 \times 1/8 = 55.69 \text{ SQ. IN. FURNISHED.}$
 END STIFFENERS: 1L 7x4x3/4 FILLS, 2R 7x1/2 I.S.
 INT. STIFFENERS: 1L 6x4x3/4 FILLS, 1R 6x1/2 I.S.
 1L 6x4x1/2 - FILLS, -1.5.
 1L 6x4x1/2 - CRIMPED - O.S. (EXCEPT FILLS @ WEB SPLICE)
 SPECIAL SHOES 36x28x2-3 HIGH
 SOLE R 18x1'-8 (FOR THICKNESS SEE DETAILS)
 MAX. MOMENT = 10,410,000 1"
 $(10,410,000 \times 12) \div 18,000 = 6,950 \text{ IN}^3 \text{ (NET) = S.M. REQ'D.}$

SECTION	NET AREA (ONE FLG)
WEB $81 \times 1/8$ (SPliced)	6.96
2 15'8x8x1/8 (NOT SPliced EXCEPT TOP)	25.88
1-COV. R 20x7/8 (FL TOP & BOT)	15.04
1-COV. R 20x7/8 (66' TOP & BOT)	15.04
1-COV. R 20x7/8 (56' TOP & BOT)	15.04
1-COV. R 20x3/4 (42' TOP & BOT)	12.89
TOTAL =	90.85

NET S.M. FURN'D = 6980 IN³

4 LINES OF RIVETS IN COV. PLS.
FLOORBEAMS
 15'-0 C-C GIRDERS
 MAX. END SHEAR 51,170 LB
 MAX. MOMENT 238,300 1"
 $(238,300 \times 12) \div 18,000 = 159.0 \text{ IN}^3 = \text{S.M. REQ'D}$
 USE 24W76 = 175.4 IN³ = S.M. FURN'D



PAINT NOTES

SHOP PAINT: ONE COAT OF RED LEAD PAINT AS PER SEC. M-9.9.
 FIELD PAINT: TWO COATS OF ALUMINUM PAINT AS PER SEC. M-9.12 EXCEPT WHERE INDICATED 'BLACK' ON SECTION A-A DWG. NO. 4. THE BLACK PAINT SHALL BE:
 1ST FIELD COAT; CHOCOLATE COLOR, COMPOSED OF THREE PARTS RED LEAD PAINT AS PER SEC. M-9.9 AND ONE PART OF BLACK PAINT AS PER SEC. M-9.8.
 2ND FIELD COAT; BLACK PAINT AS PER SEC. M-9.8.
 THE TOP FLANGE OF GRILLAGE BEAMS AND THE BOTTOM OF BOTTOM FLANGES OF FLOOR BEAMS OVER THE PIERS SHALL BE GIVEN TWO COATS OF RED LEAD PAINT BEFORE ERECTION, IN ACCORDANCE WITH SEC. M-9.9, SINCE THEY WILL BE CONSIDERED INACCESSIBLE THEREAFTER.
 STEEL SURFACES TO BE ENCASED, OR IN CONTACT WITH CONCRETE SHALL NOT BE PAINTED.
 AFTER THE DECK IS POURED ALL EXPOSED SURFACES NOT PREVIOUSLY SHOP PAINTED, FIELD RIVET HEADS AND BLEMISHED SURFACES SHALL RECEIVE A PRIME COAT OF RED LEAD PAINT AND TWO COATS OF THE PAINT PRESCRIBED ABOVE.
 PAINT, BOTH SHOP AND FIELD, SHALL BE APPLIED BY BRUSHING. SPRAY APPLICATION WILL NOT BE PERMITTED.

NOTES:
 RIVETS: 1"
 ANCHOR BOLTS - 1/4"x1'-6, HEXAGON
 NUTS & 3/8" WASHERS.
 FOR GENERAL PLAN, GENERAL NOTES SEE DWG. NO. 2.

SEC. C-32 FED AID PROJ. NO. ACI-1103 (21)					
PREPARED BY CAPITOL ENGINEERING ASSOCIATES, DILLSBURG, PA FOR					
STATE OF OHIO DEPARTMENT OF HIGHWAYS					
BRIDGE NO. LAK-1-1501 S.R.I UNDER B&O RAILROAD LAKE COUNTY SEC. LAK-1-11.59 STA. 438+18.95					
STRESS SHEET					
DESIGNED	DRAWN	TRACED	CHECKED	REVISED	DATE
FHL	ALD	ALD	FAMUSO		5-24-58