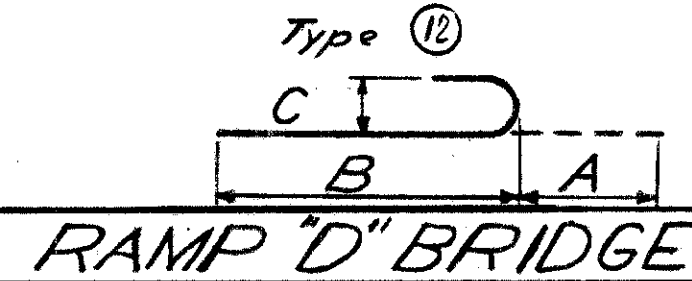


REINFORCING STEEL BAR SCHEDULE

MICROFILMED
DEC 10 1987



RAMP "D" BRIDGE

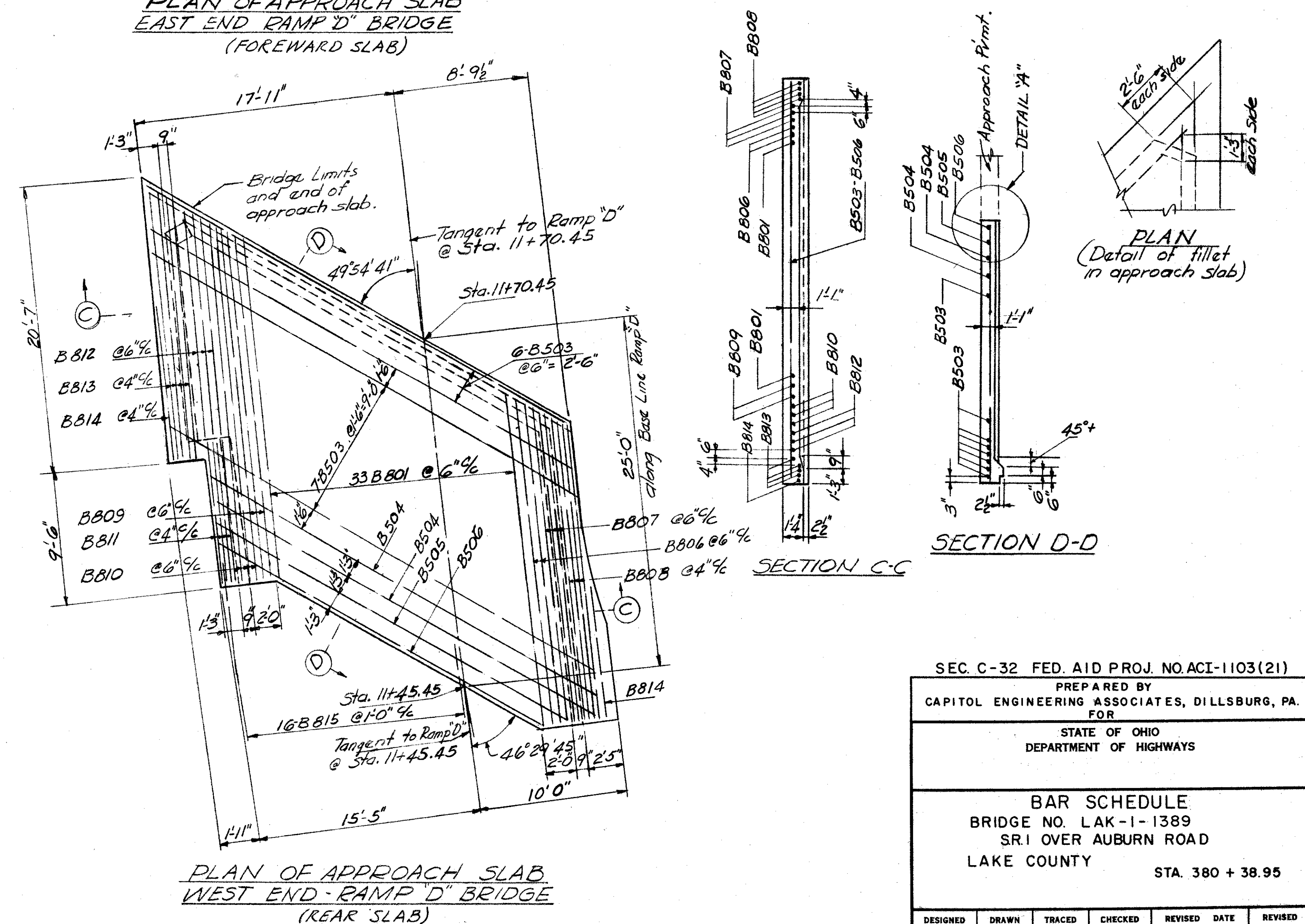
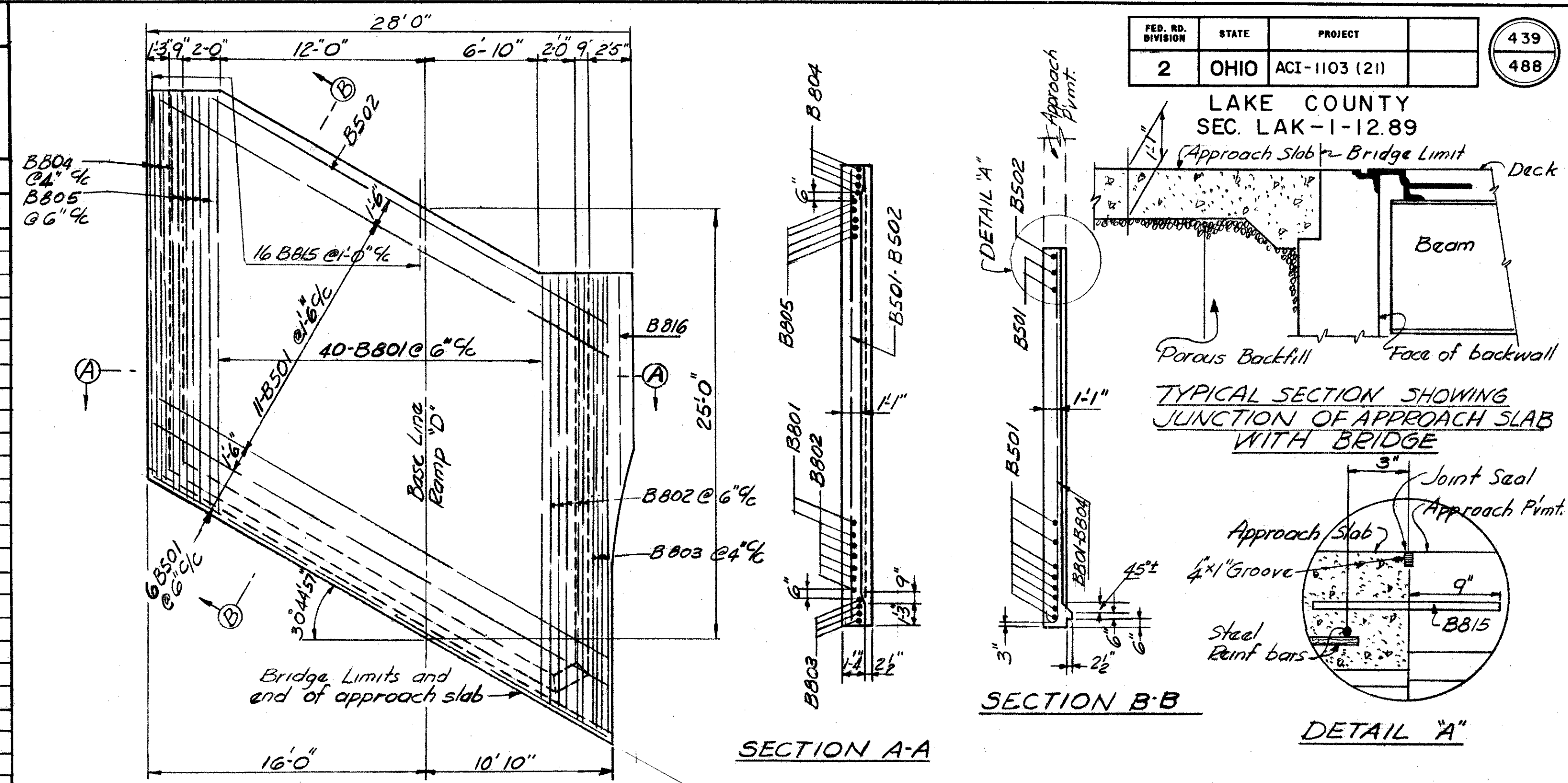
REPLACEMENT BARS					SUPERSTRUCTURE										
Mark	No.	Size	Length	Type	Mark	Total	Size	Length	Type	A	B	C	D	E	Weight
RF 400	1	4	5'-3"	str.	S711	204	7	29'-8"	Str.						12,372
RF 500	1	5	5'-7"	str.	S714	21	7	6'-8" to 29'-0"	Str.	Vary by 1/2"	(lof each)				787
RF 600	2	6	5'-11"	str.	S715	21	7	6'-2" to 29'-6"	Str.	Vary by 1/2"	(lof each)				767
RF 700	1	7	6'-2"	str.	S716	12	7	6'-0"	Str.						174
					S608	46	6	26'-0"	Str.						1796
					S614	204	6	29'-8"	Str.						9092
					S617	21	6	6'-8" to 29'-0"	Str.	Vary by 1/2"	(lof each)				578
					S618	21	6	6'-2" to 29'-6"	Str.	Vary by 1/2"	(lof each)				563
					S619	12	6	6'-0"	Str.						108
					S620	244	6	40'-0"	Str.						14,660
					S501	156	5	3'-9"	7	1'-10"	1'-3"	10"	3"		610
					S502	156	5	3'-9"	11	8"	1'-1"	6"	1'-3"	3"	610
					S401	312	4	3'-3"	1	10"	2'-6"				678
					*R407	28	4	17'-7"	Str.						
					*R407a	8	4	14'-0"	Str.						
					*R404	156	4	4'-5"	6	1'-4"	9"	2'-1"	6"		

APPROACH SLABS†

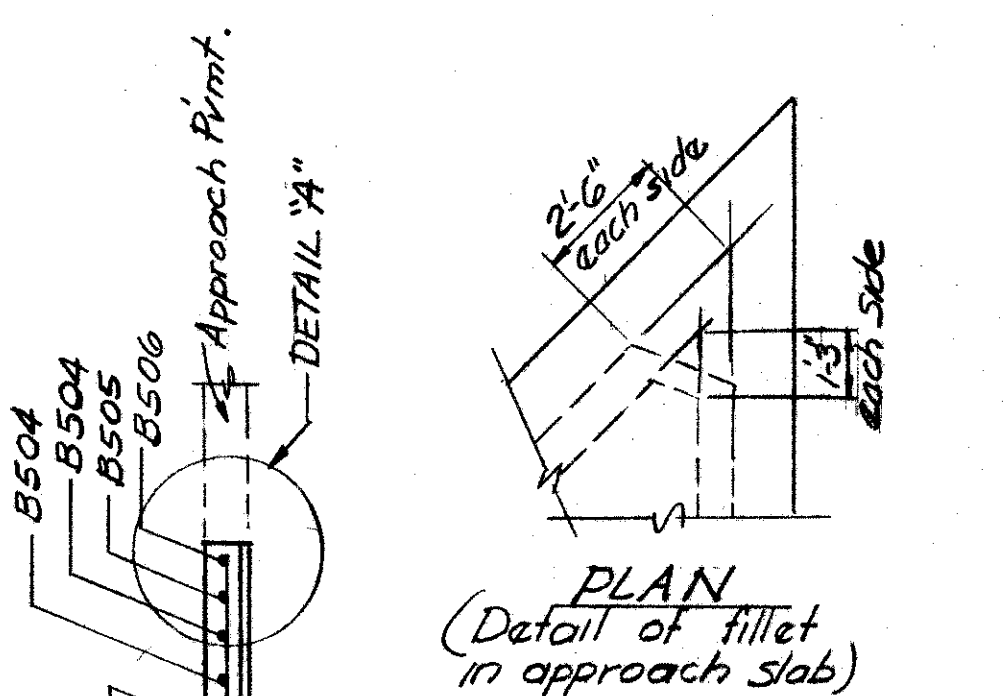
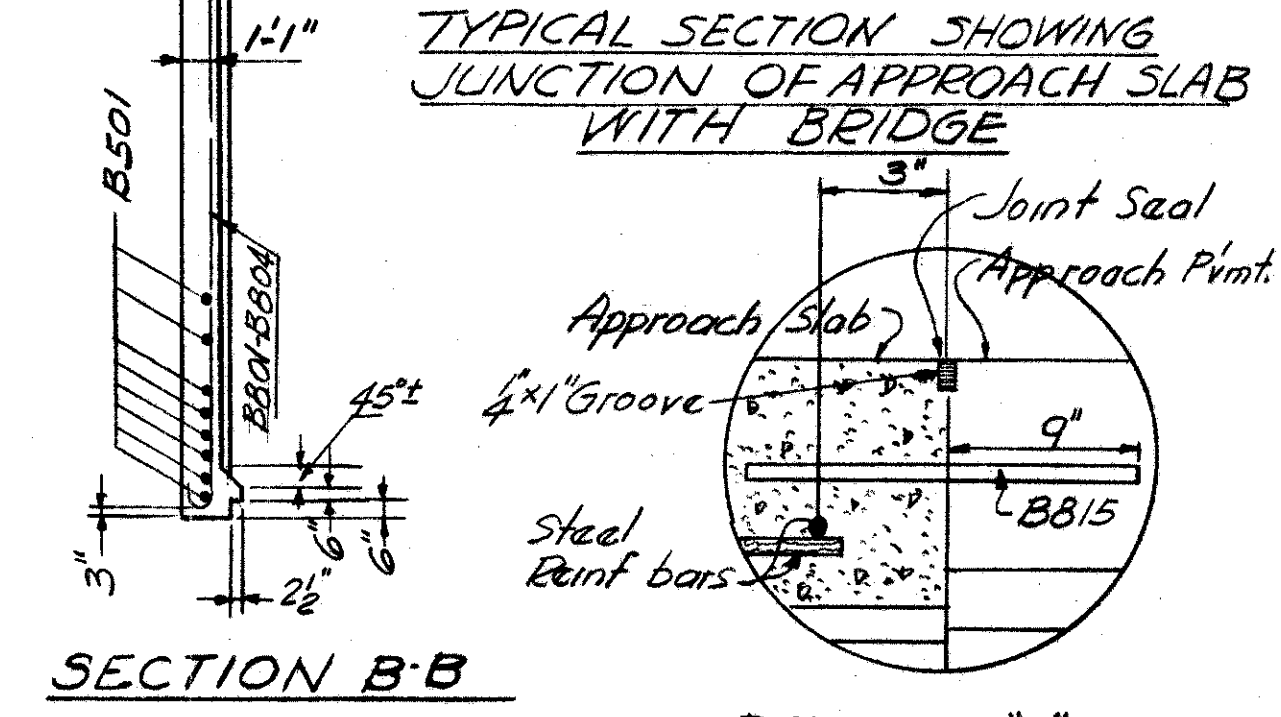
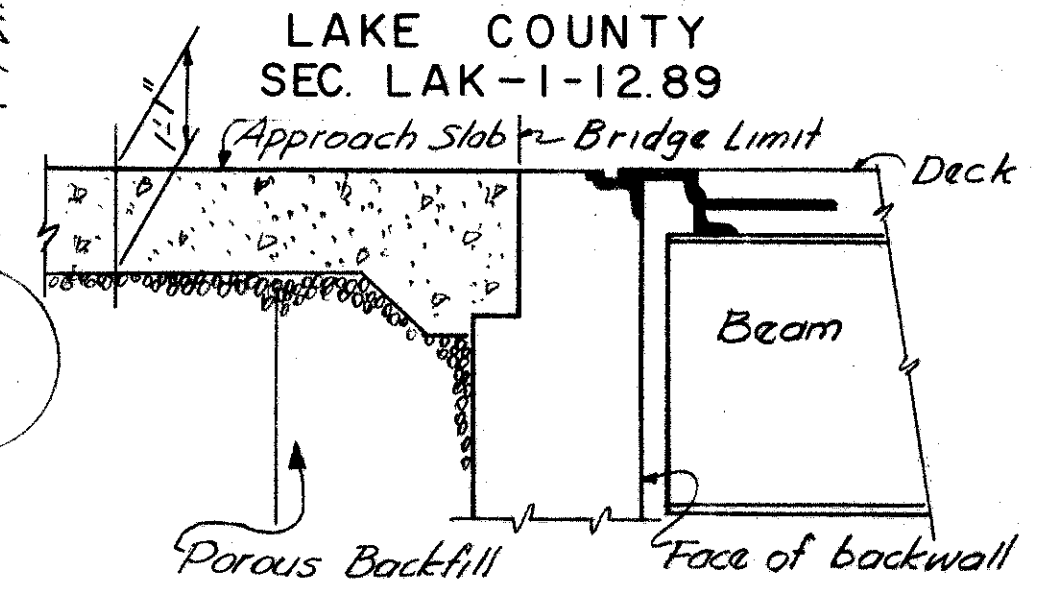
Mark	Rear	Fwd.	Total	Size	Type	Length	A	B	C	Weight
B801	33	40	73	8 12	25'-5"	0'-11"	24'-6"	0'-8"		
B802		5	5	8 12	25'-7"	0'-11"	24'-8"	0'-8"		
B803		3	3	8 12	26'-7"	0'-11"	25'-8"	0'-8"		
B804		4	4	8 12	23'-2"	0'-11"	22'-3"	0'-8"		
B805		5	5	8 12	23'-11"	0'-11"	22'-0"	0'-8"		
B806		2	2	8 12	24'-11"	0'-11"	24'-0"	0'-8"		
B807		3	3	8 12	23'-5"	0'-11"	22'-6"	0'-8"		
B808		4	4	8 12	22'-5"	0'-11"	21'-6"	0'-8"		
B809		2	2	8 12	25'-8"	0'-11"	24'-9"	0'-8"		
B810		3	3	8 12	26'-9"	0'-11"	25'-10"	0'-8"		
B811		4	4	8 12	11'-3"	0'-11"	10'-4"	0'-8"		
B812		3	3	8 12	17'-3"	0'-11"	16'-3"	0'-8"		
B813		4	4	8 12	20'-1"	0'-11"	19'-2"	0'-8"		
B814		2	2	8 12	9'-11"	0'-11"	9'-0"	0'-8"		
B815	16	16	32	8 12	1'-6"	0'-11"	1'-6"			
B816	1	1	1	8 12	12'-11"	0'-11"	12'-0"	0'-8"		
B501		11	11	5	Str.	30'-9"				
B502		1	1	5	Str.	26'-6"				
B503		7	7	5	Str.	34'-9"				
B504		2	2	5	Str.	33'-0"				
B505		1	1	5	Str.	30'-6"				
B506		1	1	5	Str.	27'-10"				

† Not included in Bridge Quantities
* Included with Railing for Payment

Total Weight Ramp "D" Bridge 42,213 lbs.



FED. RD. DIVISION	STATE	PROJECT	439
2	OHIO	ACI-1103 (21)	488



SEC. C-32 FED. AID PROJ. NO. ACI-1103(21)
PREPARED BY
CAPITOL ENGINEERING ASSOCIATES, DILLSBURG, PA.
FOR
STATE OF OHIO
DEPARTMENT OF HIGHWAYS
BAR SCHEDULE
BRIDGE NO. LAK-1-1389
SRI OVER AUBURN ROAD
LAKE COUNTY
STA. 380 + 38.95

DESIGNED	DRAWN	TRACED	CHECKED	REVISED	DATE	REVISED
C.E.B.	J.C.B.		J.M.M.			