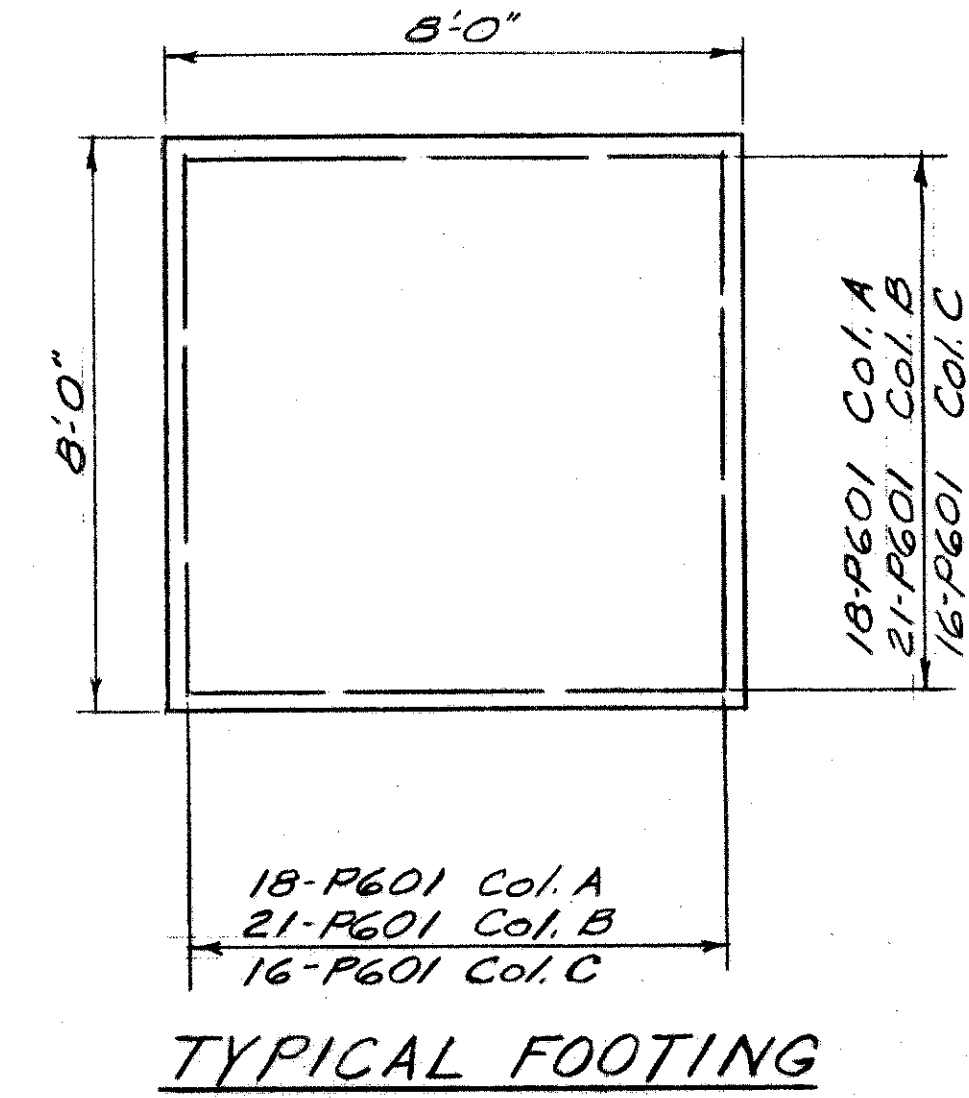
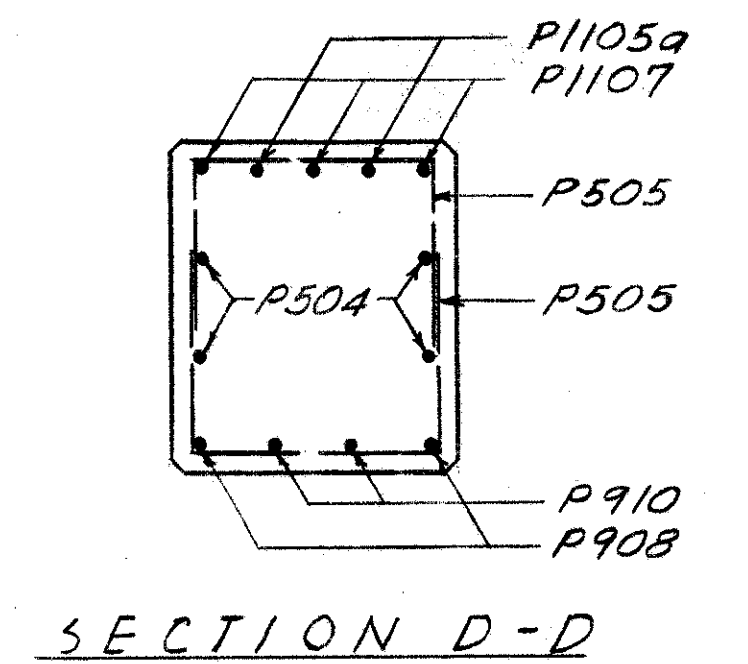
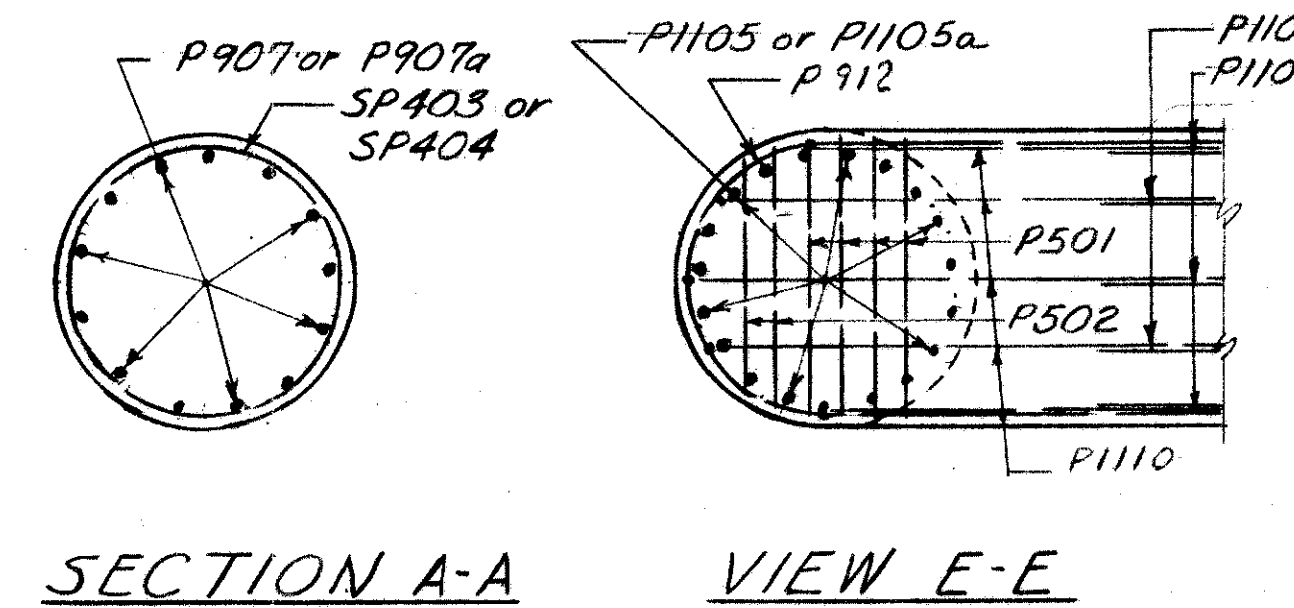
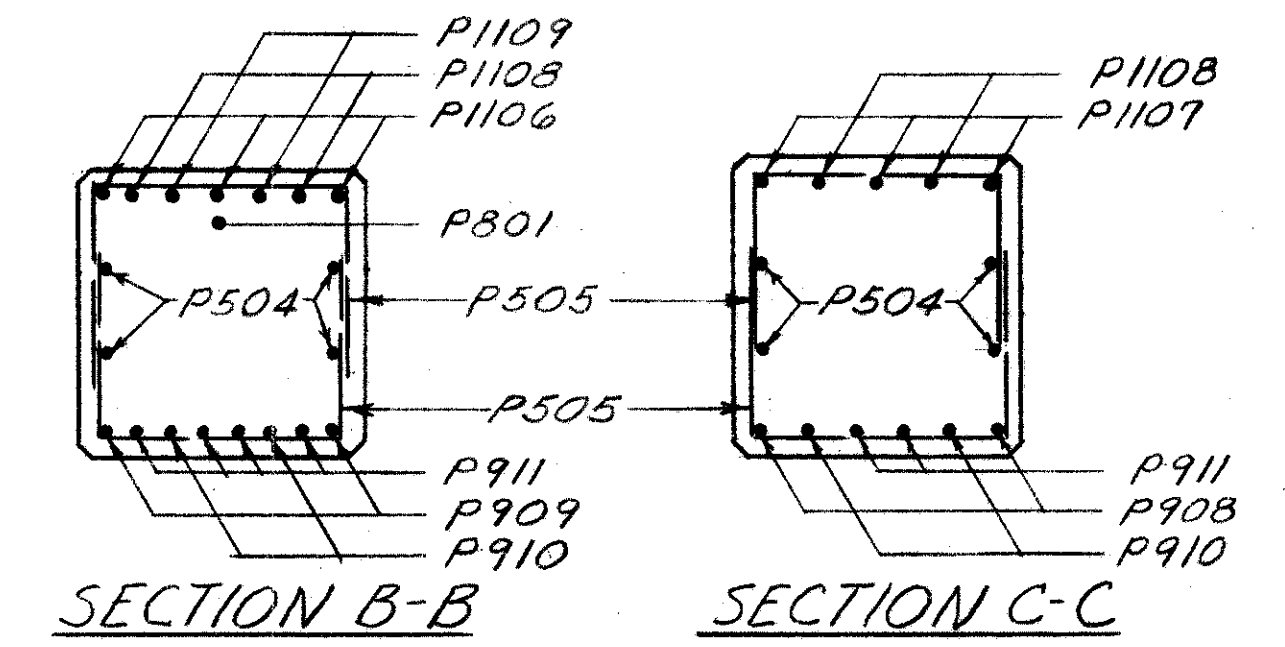
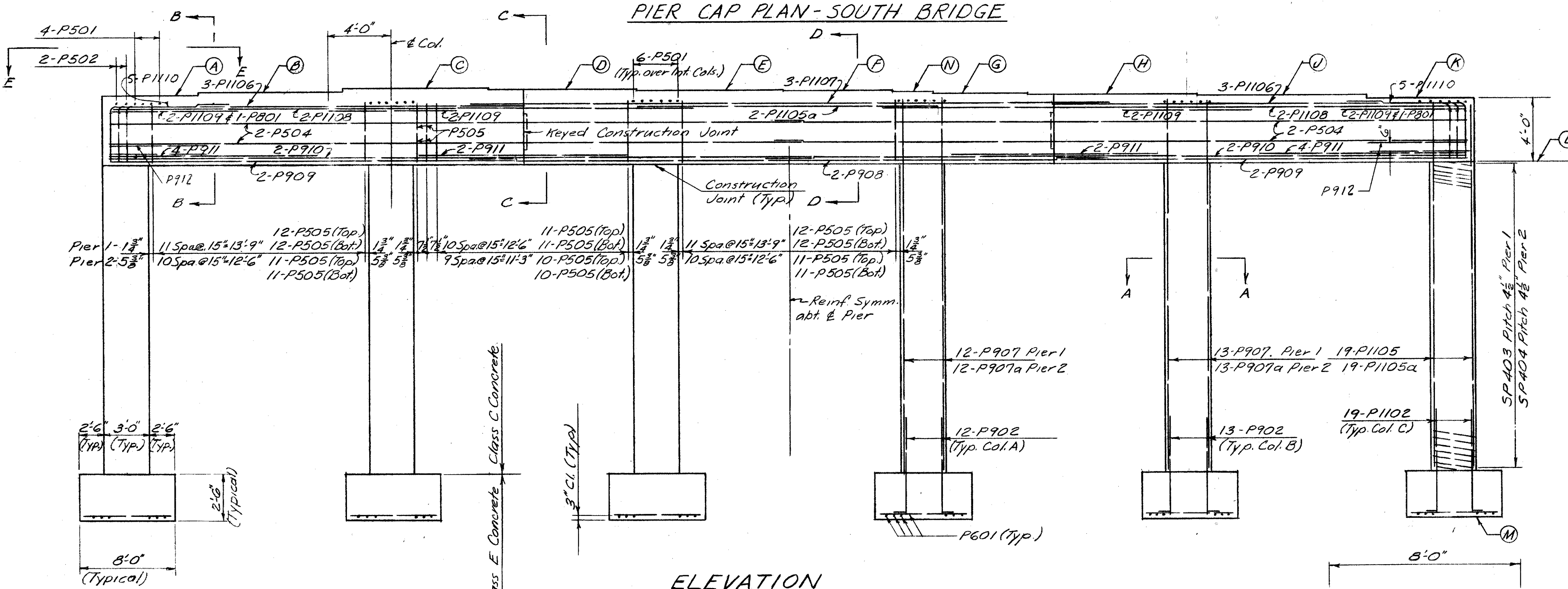
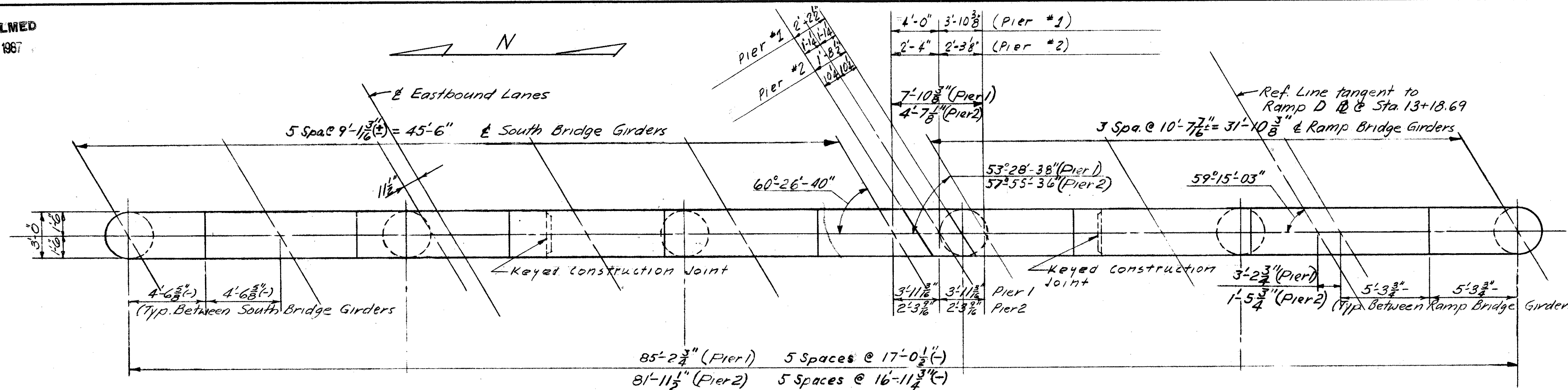


LAKE COUNTY  
SEC. LAK-1-12.89



**NOTES:**  
Clearance of reinforcing steel shall be 2" from face of concrete unless otherwise shown.  
Special care shall be taken in placing reinforcing steel in the bridge seat so that it will not interfere with the drilling of anchor bolt holes.  
Maximum foundation pressure is 6 tons per square foot. Average is 3.75 tons per Sq. ft.

PIER ELEVATIONS													
	A	B	C	D	E	F	G	H	J	K	L	M	N
PIER 1 SOUTH	829.01	829.18	829.36	829.32	829.25	829.18	829.11	828.92	828.53	828.25	828.25	829.25	829.16
PIER 2 SOUTH	828.41	828.58	828.74	828.70	828.62	828.55	828.34	828.17	827.98	827.70	829.76	802.27	828.43

SEC. C-32 FED. AID PROJ. NO. ACI-1103 (21)					
PREPARED BY CAPITOL ENGINEERING ASSOCIATES, DILLSBURG, PA FOR					
STATE OF OHIO DEPARTMENT OF HIGHWAYS					
SOUTH PIERS BRIDGE NO. LAK-1-1389 S.R.I OVER AUBURN RD. LAKE COUNTY					
					STA. 380 + 38.95
DESIGNED	DRAWN	TRACED	CHECKED	REVISED	DATE
JM	JM		CEB		