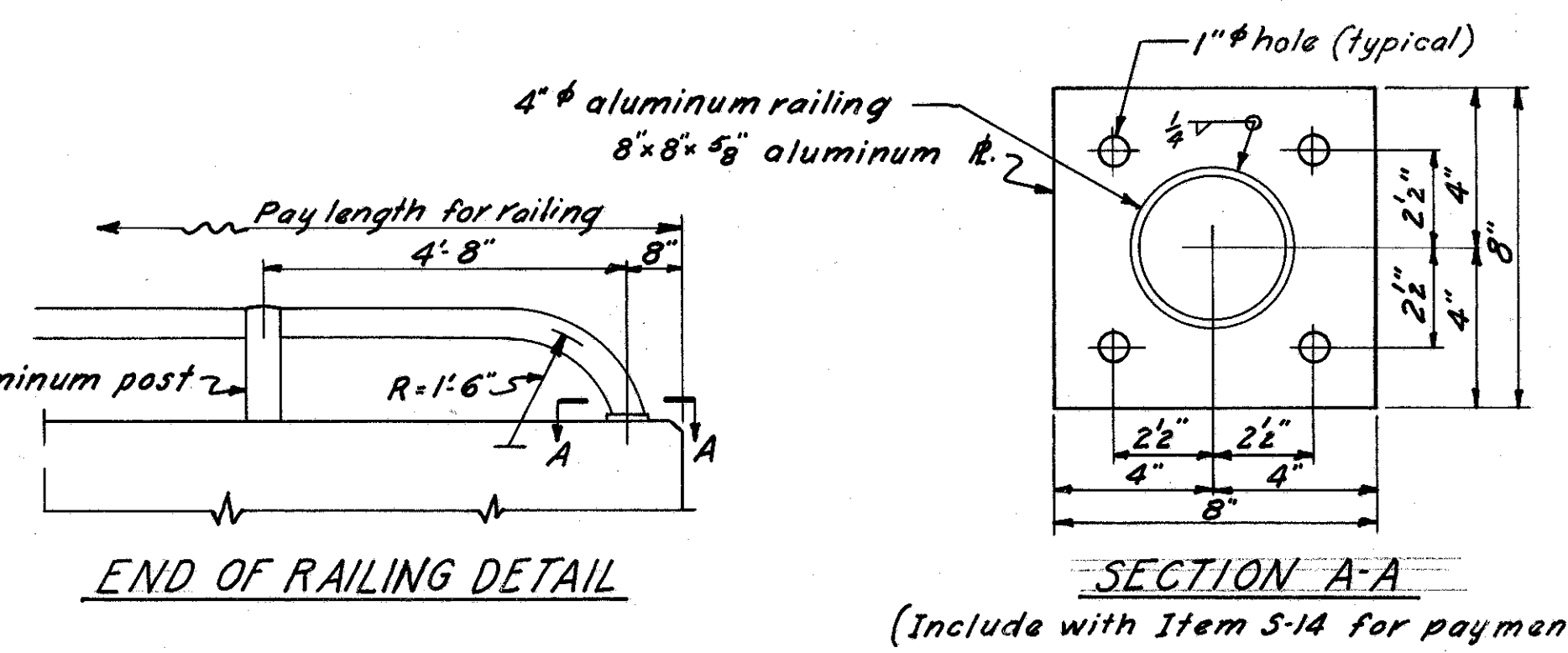
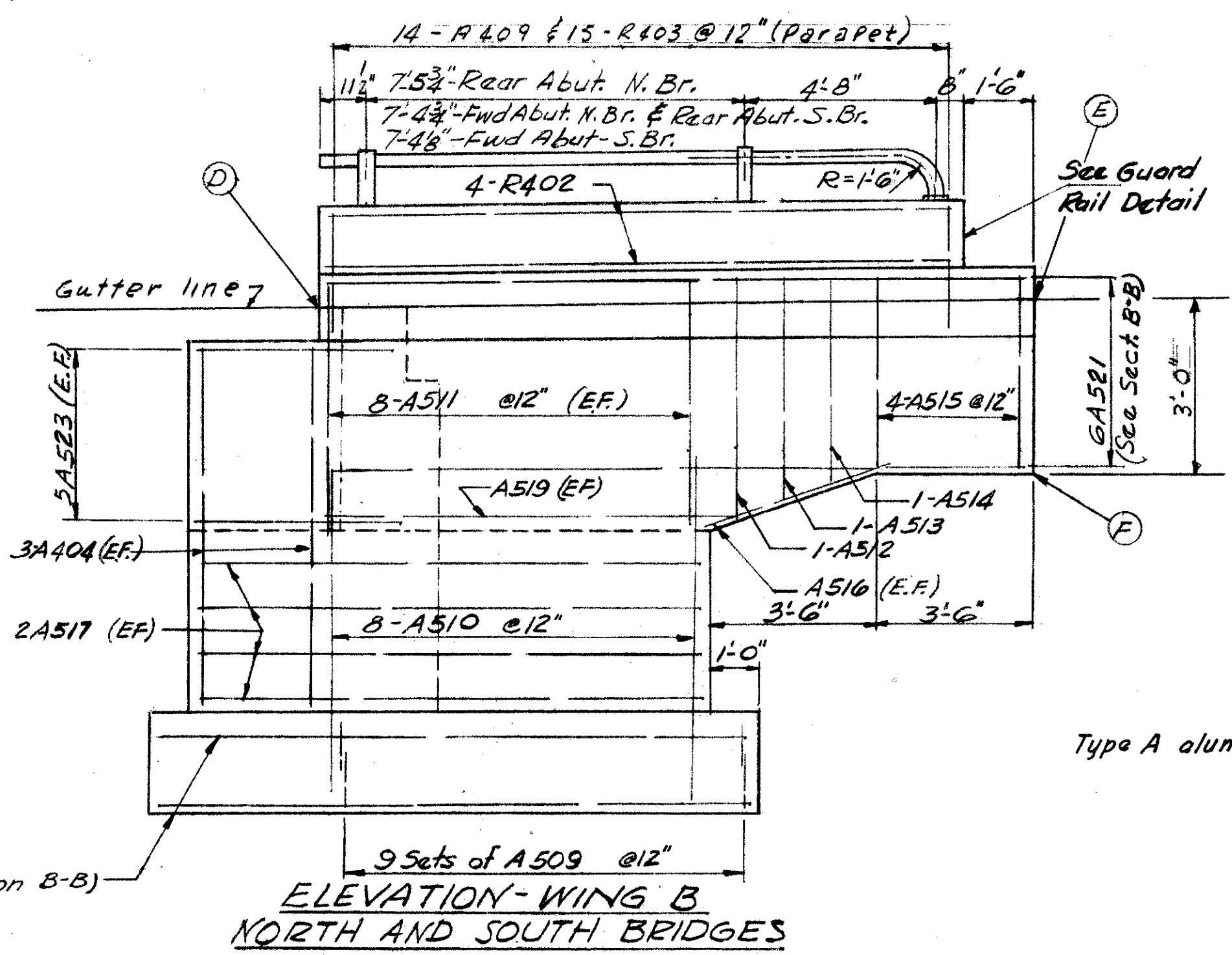
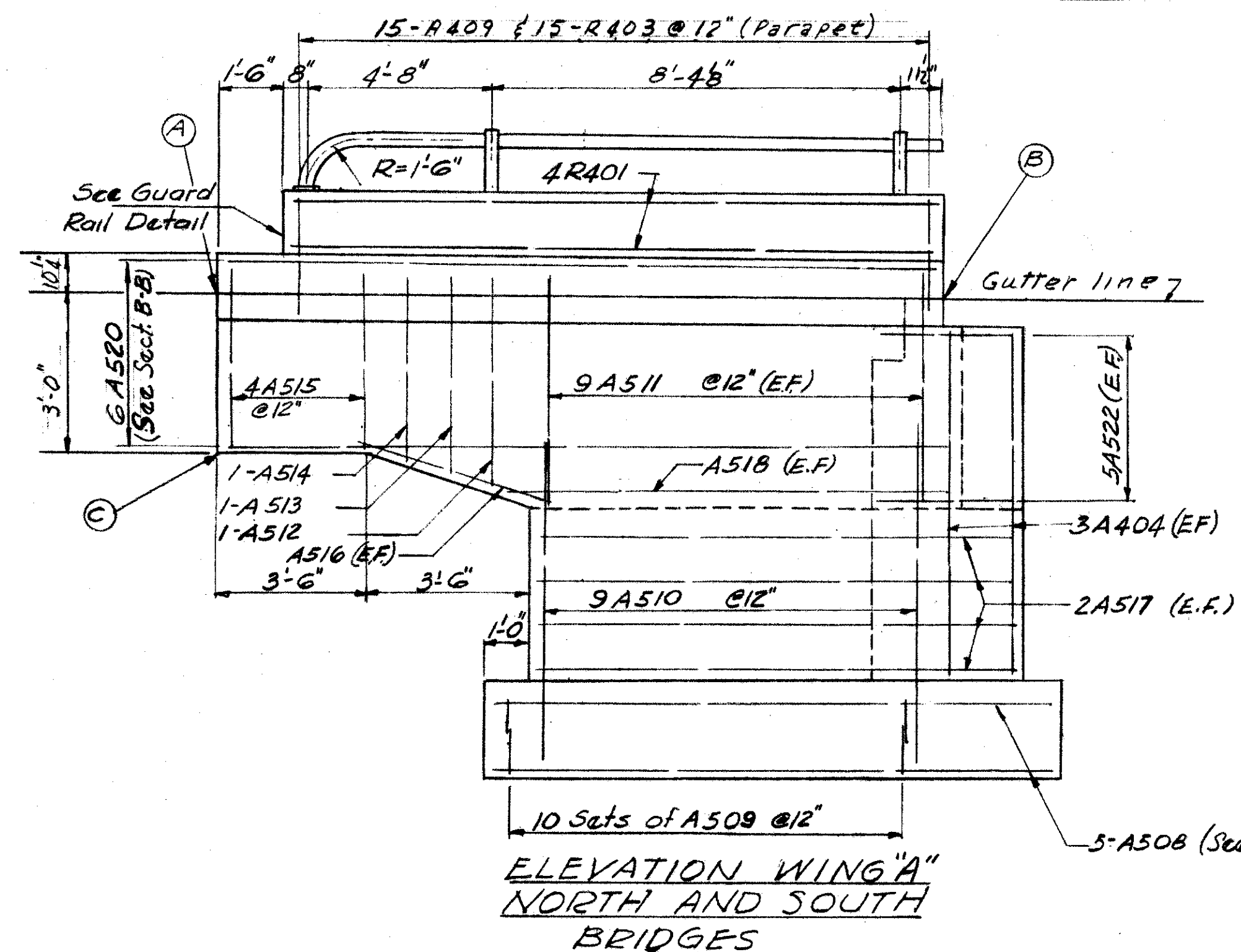
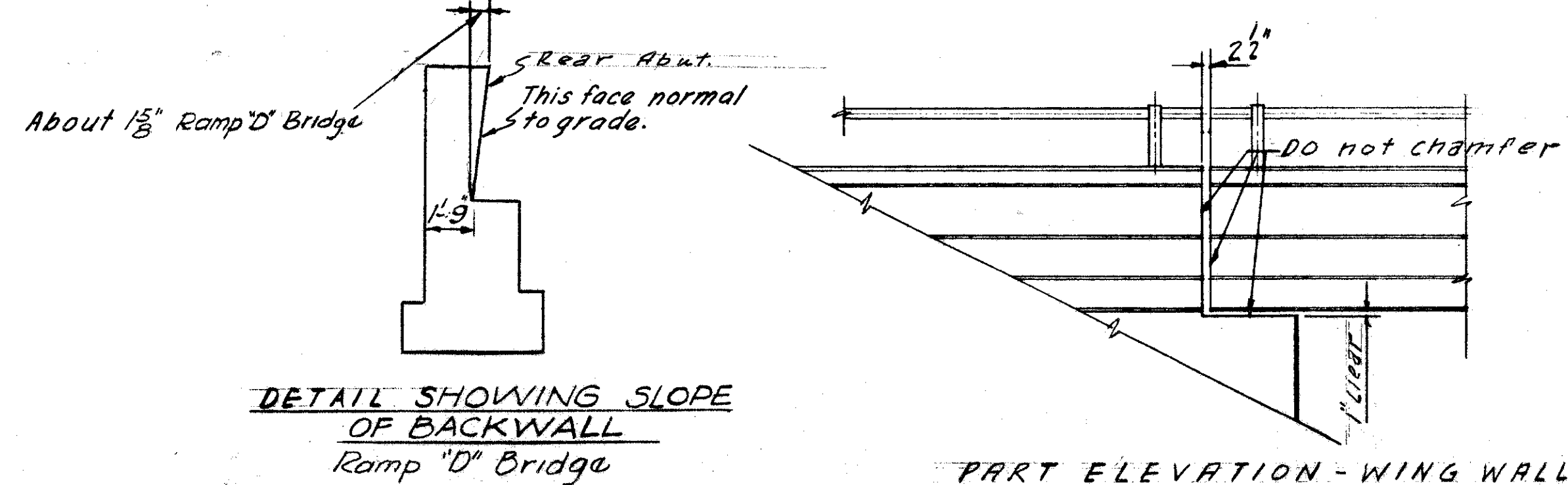


- NOTES**
- Porous backfill 2 feet thick full length of abutment, shall extend up to the underside of the approach slab and outward to the wings. Excavation therefor, in excess of that required for the abutment, shall be considered as included in the bid price per cu. yd. for porous backfill.
 - Clearance of reinforcing steel from face of concrete shall be 2" unless otherwise noted.
 - Design foundation pressure is 1/2 tons per sq. ft.
 - All abutment concrete except parapet shall be Class E.
 - If unsatisfactory material is encountered in the excavation for the rear abutment for the West bound lanes, it shall be removed and replaced with material meeting the requirements of Sec. I-22 and shall be compacted in accordance with the requirements of embankment compaction. Payment for backfill shall be included in Item E-2, unclassified excavation.



SECTION A-A
(Include with Item 5-14 for payment.)



PART ELEVATION - WING WALL & DECK

ELEVATIONS						
LOCATION	A	B	C	D	E	F
Rear Abut. North Bridge	833.22	833.05	830.22	832.38	832.53	829.53
Fwd. Abut. North Bridge	830.84	830.95	827.84	831.46	831.35	828.35
Rear Abut. South Bridge				833.50	833.67	830.67
Fwd. Abut. South Bridge	831.75	831.88	828.75	831.58	831.44	828.44

SEC. C-32 FED. AID PROJ. NO. ACI-1103 (21)

PREPARED BY
CAPITOL ENGINEERING ASSOCIATES, DILLSBURG, PA.
FOR

STATE OF OHIO
DEPARTMENT OF HIGHWAYS

ABUTMENT DETAILS
BRIDGE NO. LAK-1-1389
S.R.1 OVER AUBURN ROAD
LAKE COUNTY
STA. 380 + 3895

DESIGNED	DRAWN	TRACED	CHECKED	REVISED DATE	REVISED
CEB	CEB		NMM		