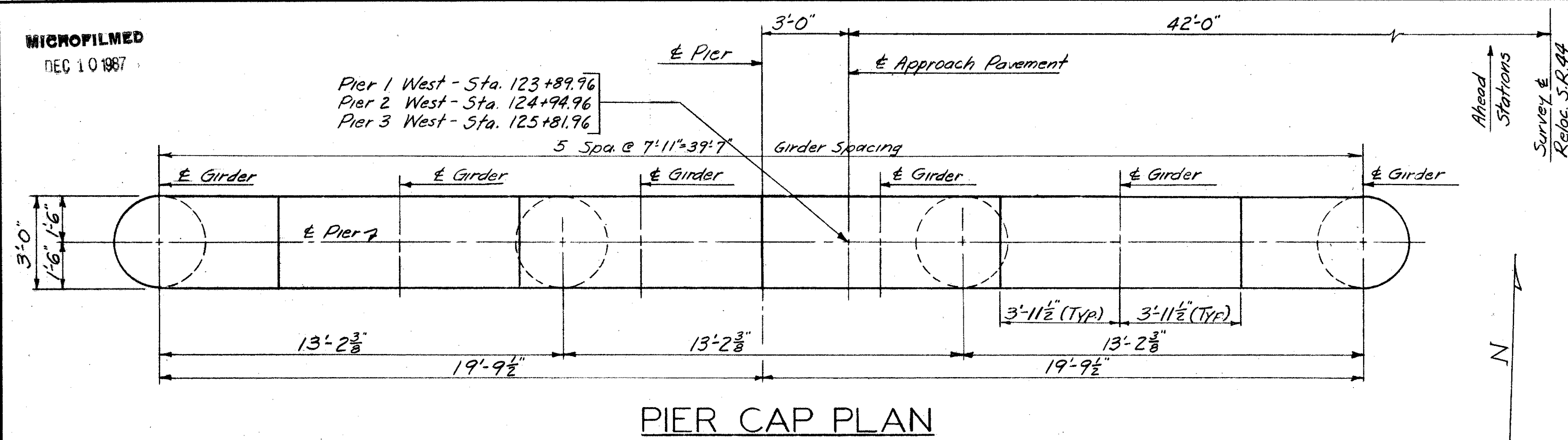


MICROFILMED  
DEC 10 1987

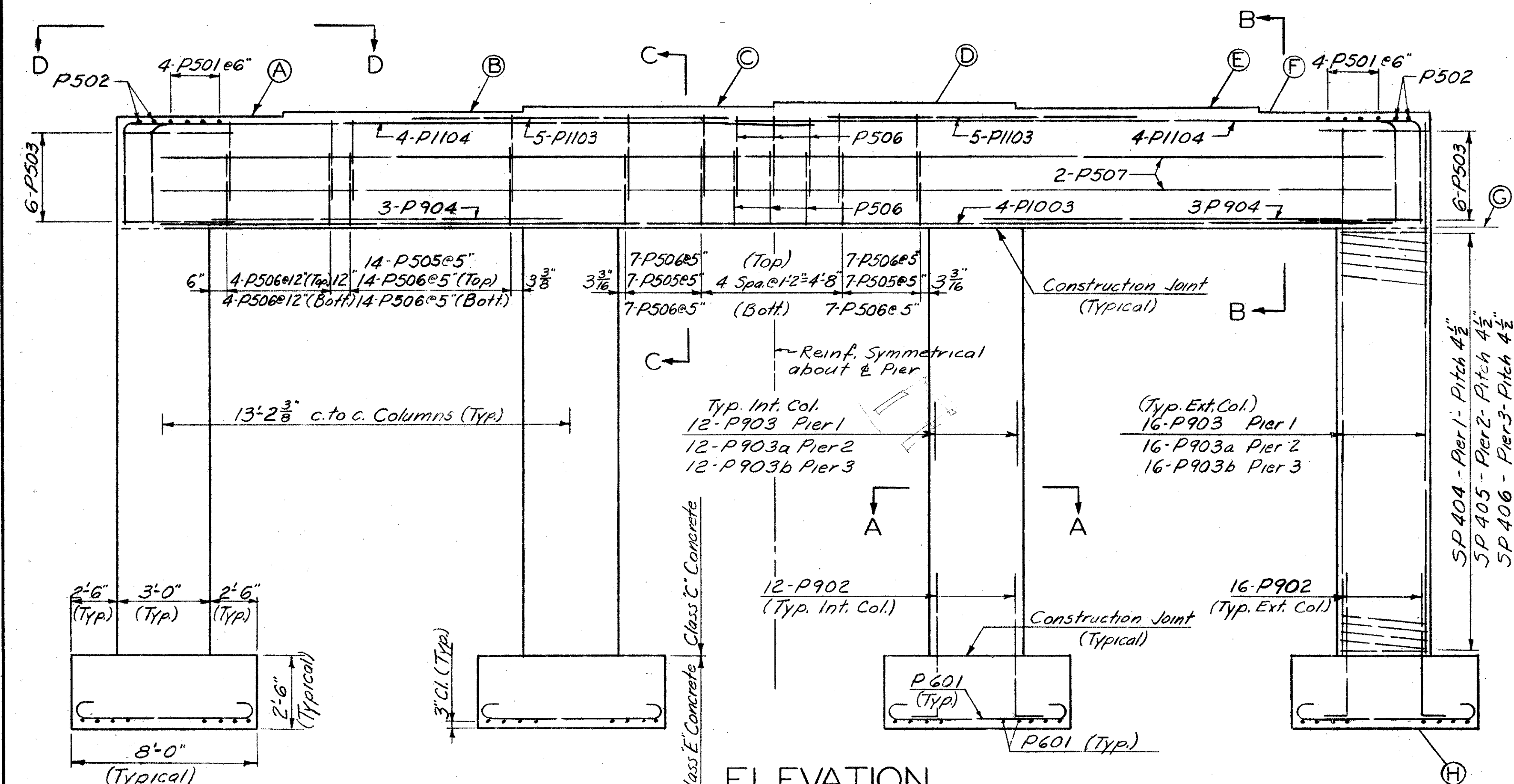
FED. RD. DIVISION	STATE	PROJECT	
2	OHIO	ACI-1103 (21)	

414  
488

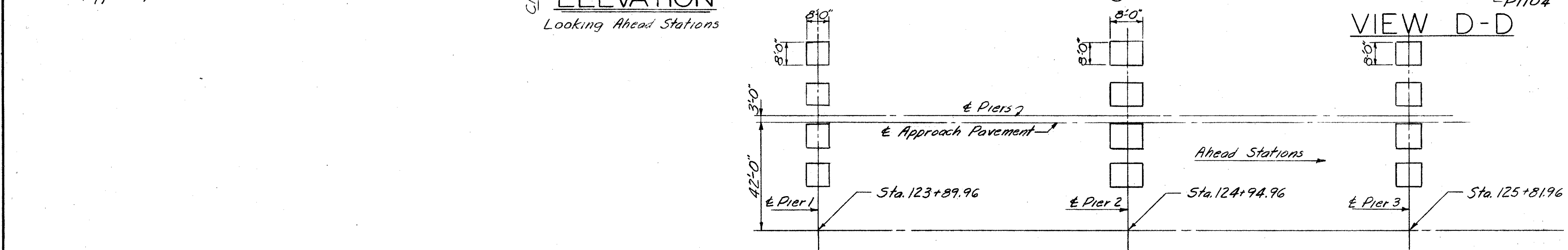
LAKE COUNTY  
SEC. LAK-1-12.89



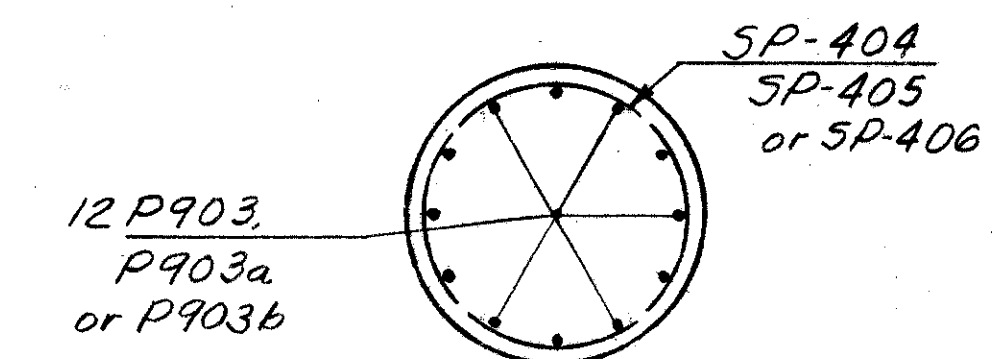
PIER CAP PLAN



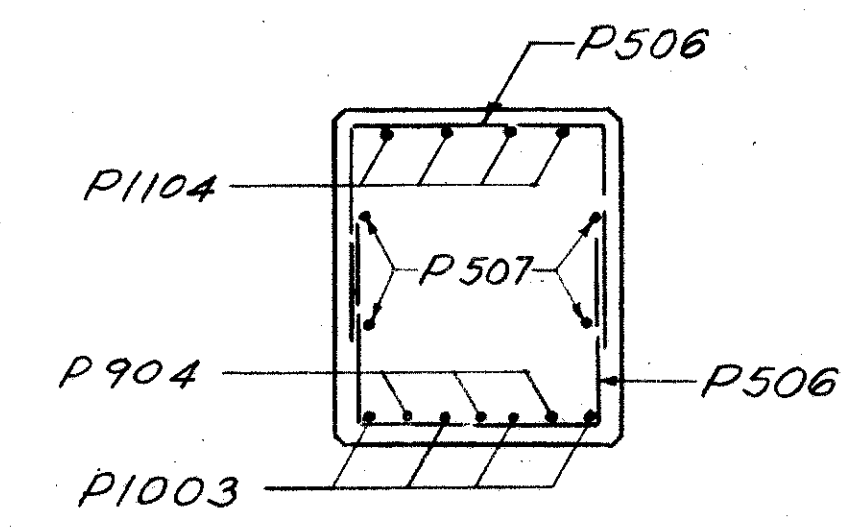
ELEVATION  
Looking Ahead Stations



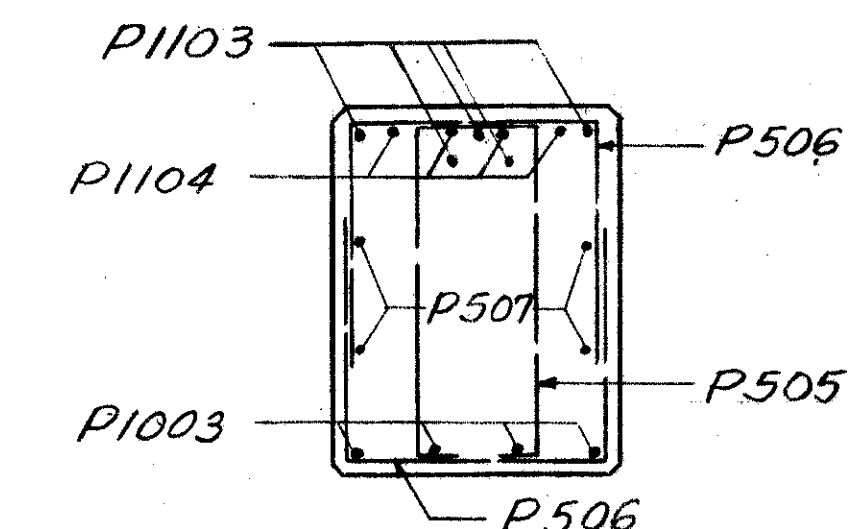
FOOTING LOCATIONS



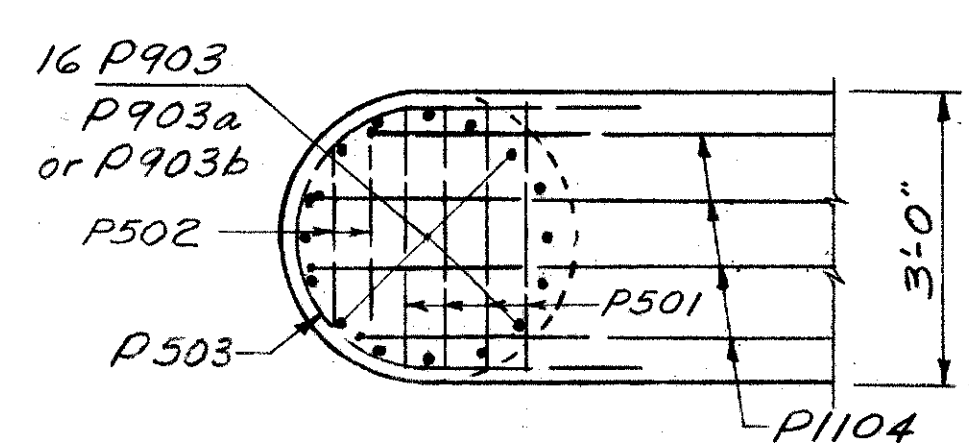
SECTION A-A



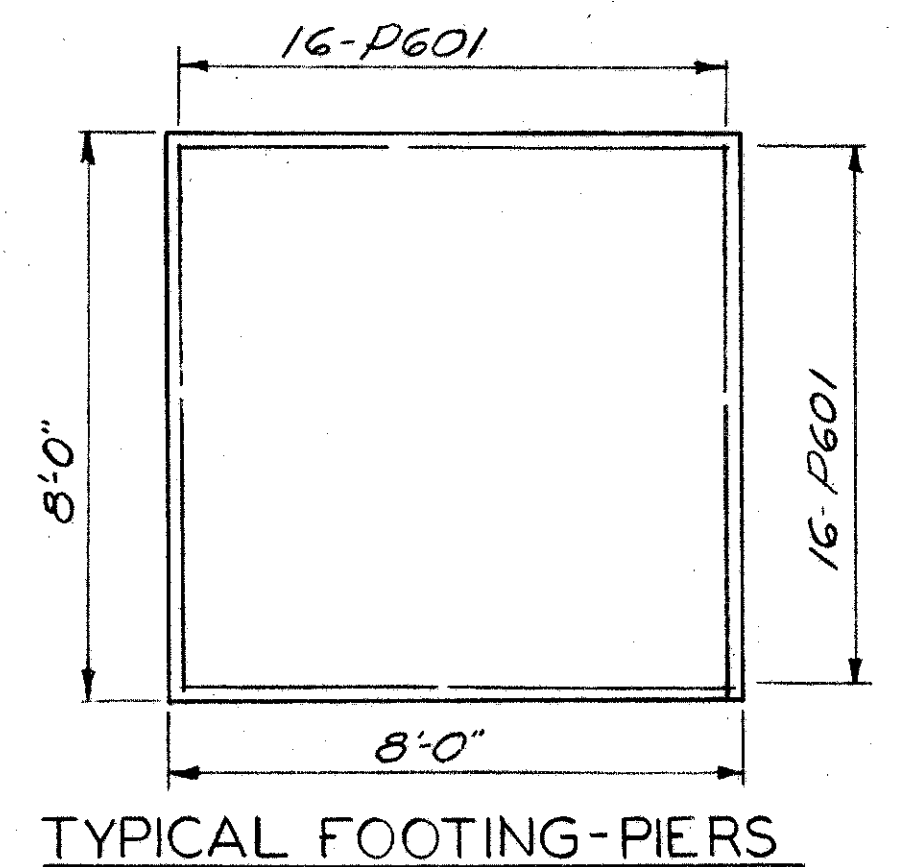
SECTION B-B



SECTION C-C



VIEW D-D



TYPICAL FOOTING-PIERS

NOTES:  
 \* Clearance of Reinforcing steel shall be 2" from face of concrete unless otherwise shown.  
 \* Special care shall be taken in placing reinforcing steel in the bridge seat so that it will not interfere with the drilling of anchor bolt holes.  
 \* Design Foundation Pressure is 8 Tons per square foot.

PIER ELEVATIONS								
	A	B	C	D	E	F	G	H
Pier 1	865.56	865.69	865.81	865.90	865.78	865.66	862.06	839.10
Pier 2	862.42	862.54	862.67	862.76	862.64	862.51	858.92	841.13
Pier 3	859.96	860.09	860.21	860.30	860.18	860.06	856.46	838.01
	860.03	860.16	860.28	860.37	860.25	860.13	856.53	838.01

SEC. C-32 FED. AID PROJ. NO. ACI-1103 (21)

PREPARED BY  
CAPITOL ENGINEERING ASSOCIATES, DILLSBURG, PA.  
FOR

STATE OF OHIO  
DEPARTMENT OF HIGHWAYS

PIERS  
BRIDGE NO. LAK-1-1370.  
S.R.1 UNDER RELOC. S.R. 44 (WEST BRIDGE)  
LAKE COUNTY  
STA. 370 +01.86

DESIGNED	DRAWN	TRACED	CHECKED	REVISED DATE	REVISED
J.R.D.	C.W.	C.W.	J.R.D.		10-22-95

Pier footings shall extend a minimum of 3" into solid shale or to the elevation shown, whichever is lower.