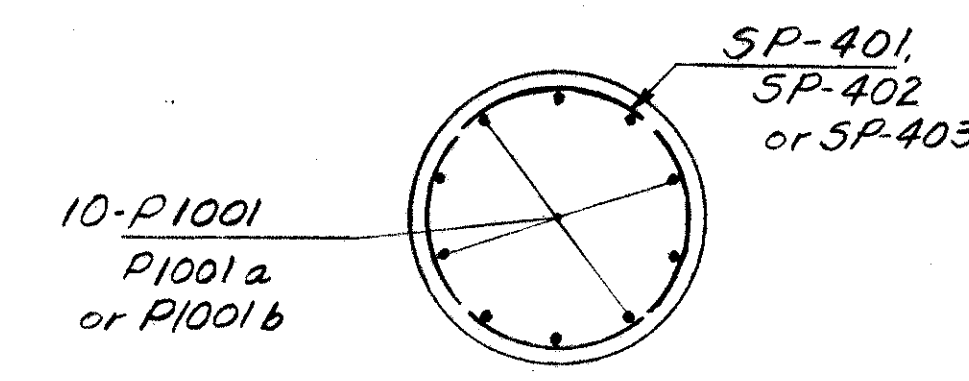
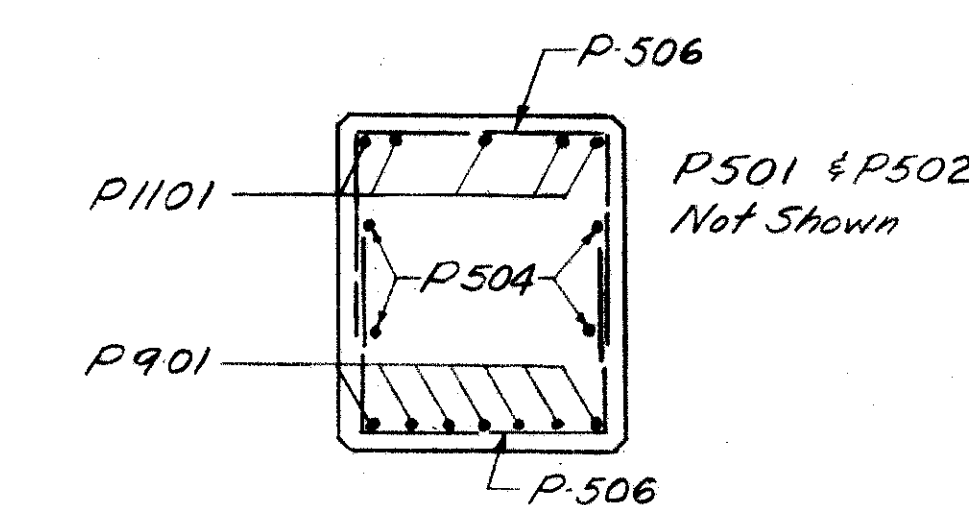


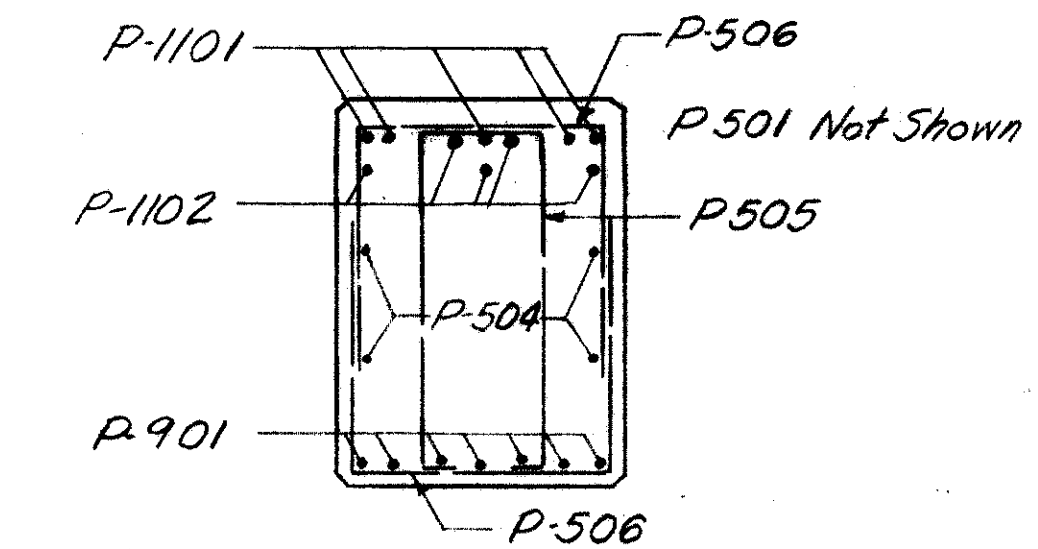
PIER CAP PLAN



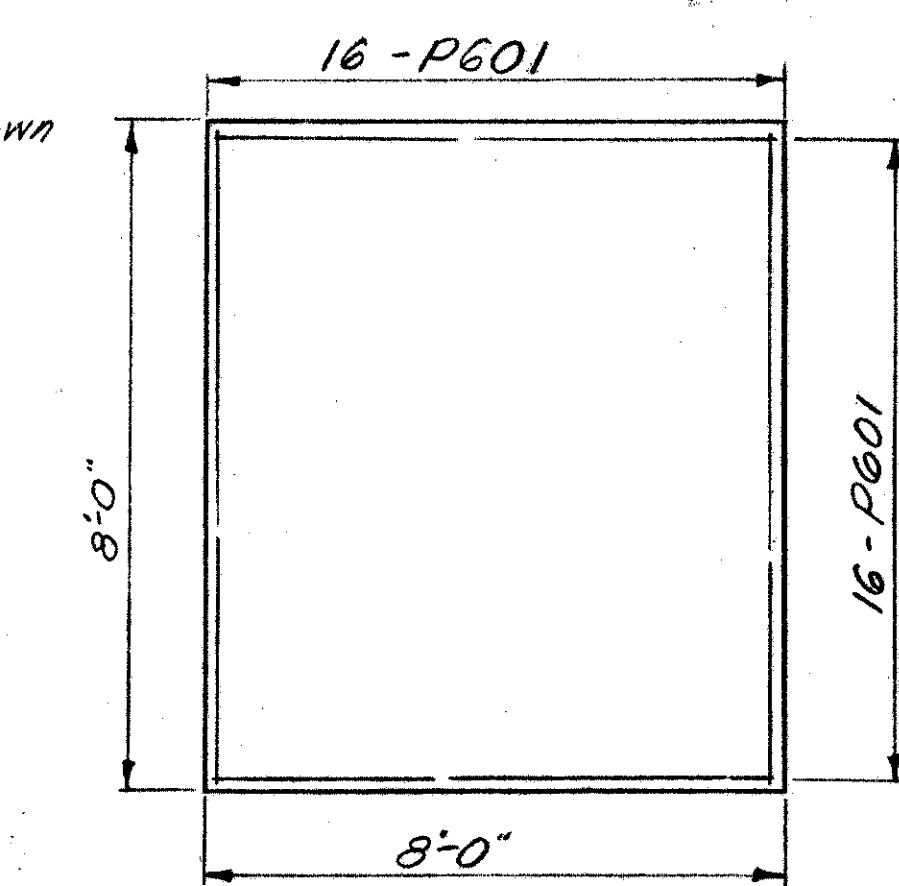
SECTION A-A



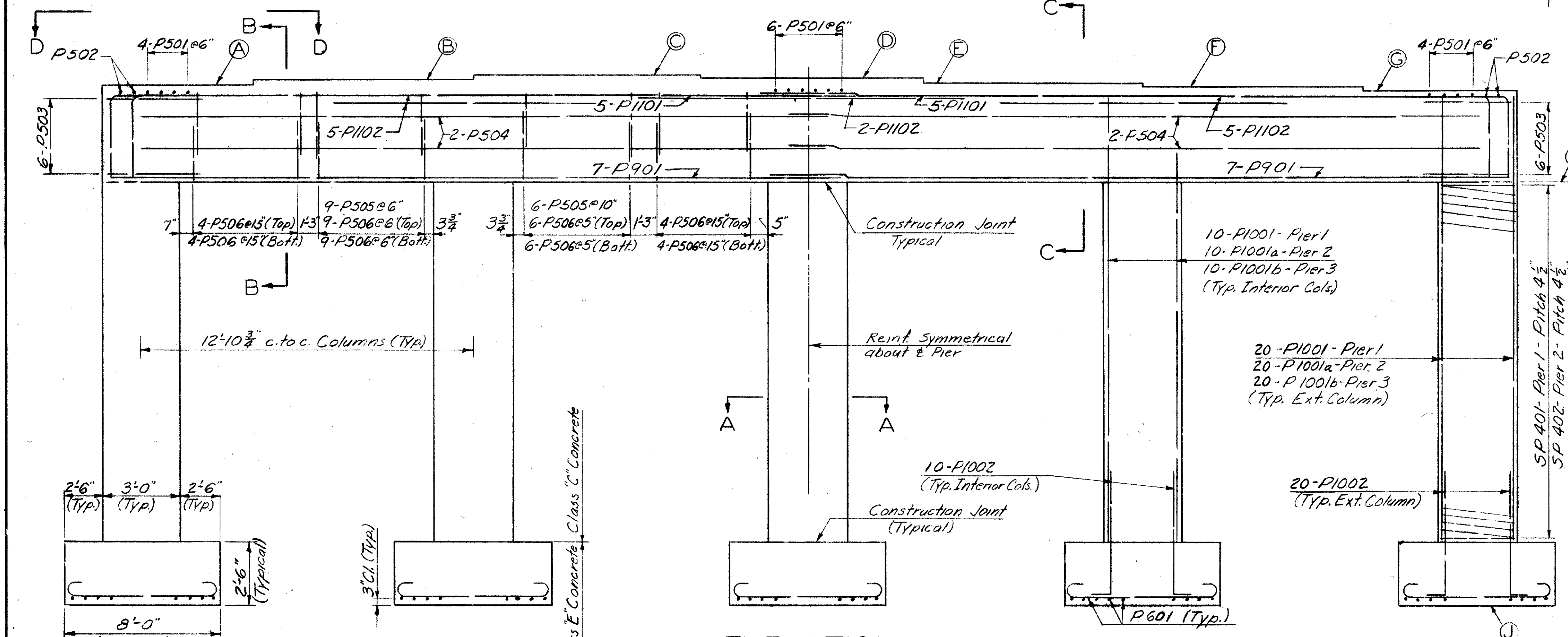
SECTION B-B



SECTION C-C

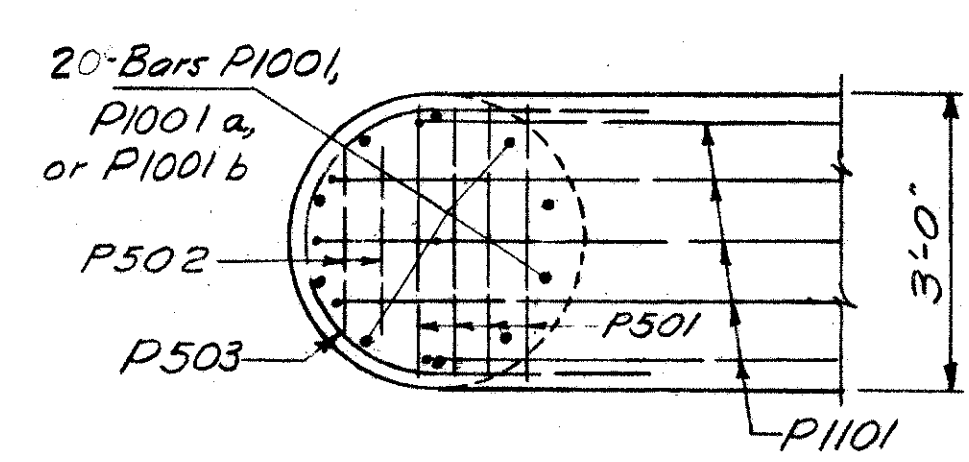


TYPICAL FOOTING - PIERS



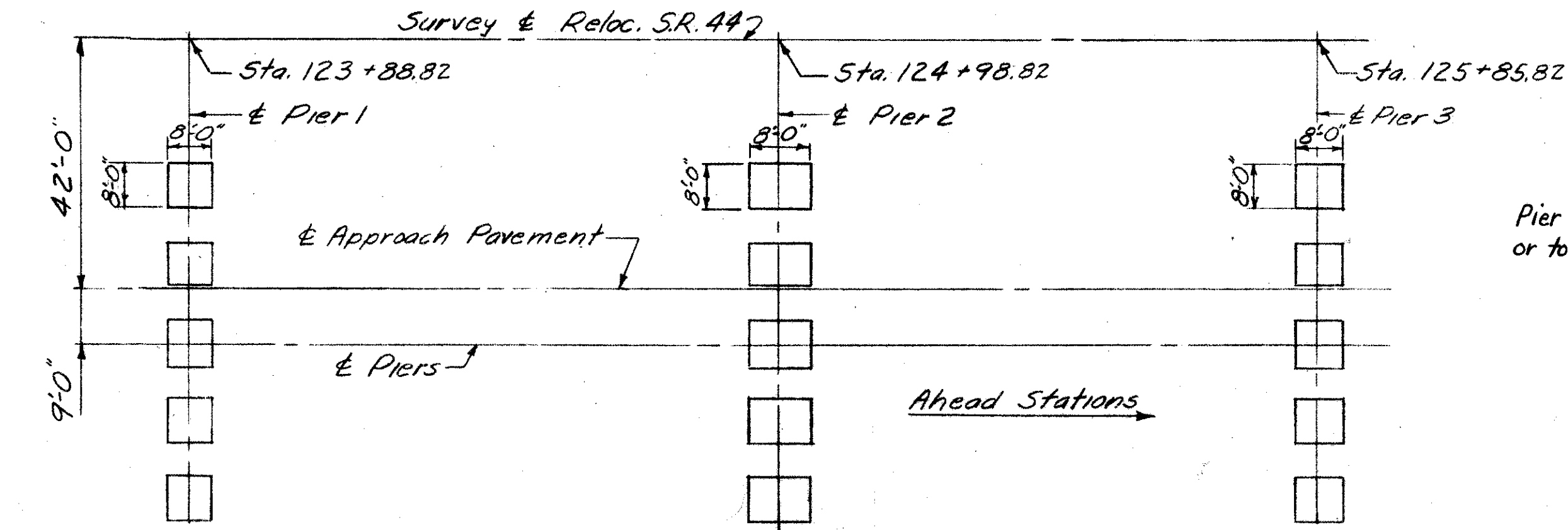
ELEVATION

Looking Ahead Stations



VIEW D-D

- NOTES:
- Clearance of Reinforcing steel shall be 2" from face of concrete unless otherwise shown.
 - Special core shall be taken in placing reinforcing steel in the bridge seat so that it will not interfere with the drilling of anchor bolt holes.
 - Design Foundation Pressure is 8 Tons per square foot.



FOOTING LOCATIONS

Pier footings shall extend a minimum of 3" into solid shale or to the elevation shown, whichever is lower.

PIER ELEVATIONS										
	A	B	C	D	E	F	G	H	J	
Pier 1	865.13	865.26	865.38	865.25	865.12	864.99	864.85	861.35	837.67	
Pier 2	861.83	861.96	862.09	861.96	861.82	861.69	861.55	858.05	839.47	
Pier 3	859.35	859.48	859.61	859.48	859.34	859.21	859.07	855.57	837.60	
	.45	.58	.71	.57	.44	.31	.17	.67		

SEC. C-32 FED. AID PROJ. NO. ACI-1103 (21)

PREPARED BY
CAPITOL ENGINEERING ASSOCIATES, DILLSBURG, PA.
FOR

STATE OF OHIO
DEPARTMENT OF HIGHWAYS

PIERS
BRIDGE NO. LAK-I-1370
S.R. 1 UNDER RELOC. S.R. 44 (EAST BRIDGE)
LAKE COUNTY
STA. 370+01.86

DESIGNED	DRAWN	TRACED	CHECKED	REVISED DATE	REVISION
J.R.O.	C.W.	C.W.	J.R.O.	10-22-58	58