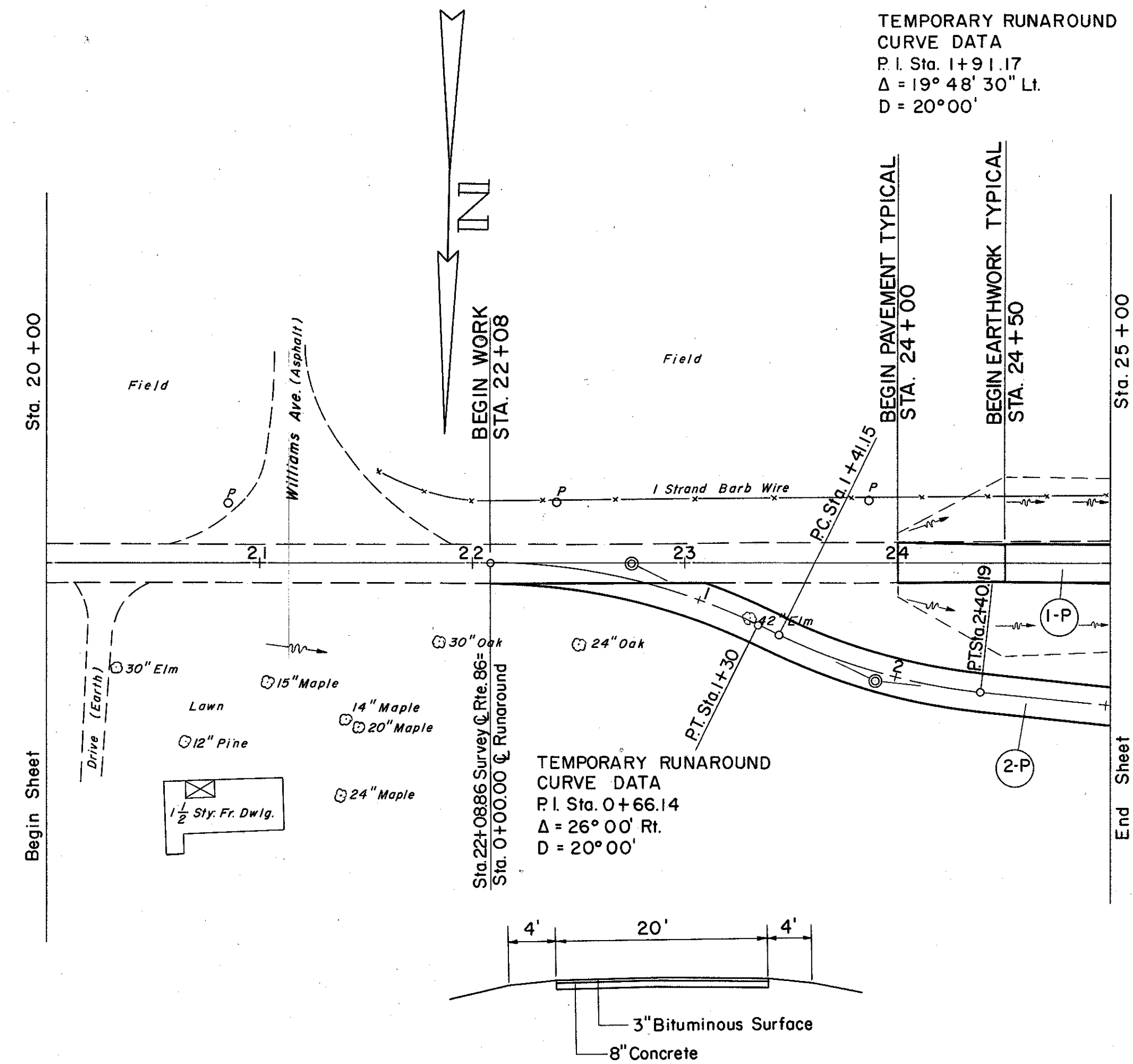


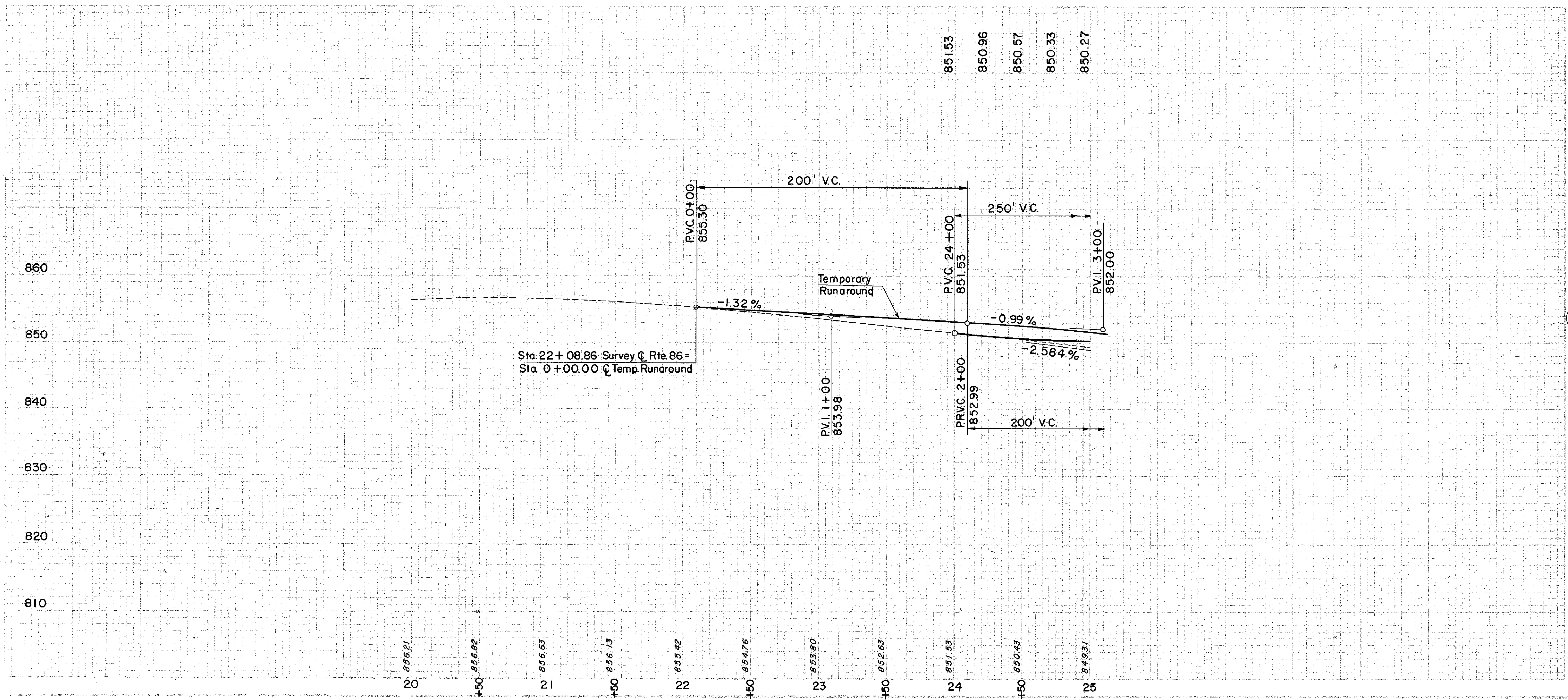
LAKE COUNTY
LAK-I-12.89



TYPICAL SECTION OF ADJOINING PAVEMENT

TEMPORARY RUNAROUND
CURVE DATA
P.I. Sta. 0+66.14
Δ = 26° 00' Rt.
D = 20° 00'

TEMPORARY RUNAROUND
CURVE DATA
P.I. Sta. 1+91.17
Δ = 19° 48' 30" Lt.
D = 20° 00'



(P) PAVEMENT

REF. SIDE NO.	STATION	FROM	TO	ITEM	QUANTITY
1-P	24+00	25+00	19+86.43	T-35 1 1/4\"/>	
2-P	0+00	19+86.43		B-35 1 1/4\"/>	
				I-22 6\"/>	
				T-30 BIT PRIME COAT	70 GAL
				I-9 STONE UNDER DRAIN (NO. 2)	58 L.F.
				S-15 TEMPORARY RUNAROUND	LUMP
				E-8 REMOVAL & DISPOSAL OF EXISTING PAVEMENT	222 S.Y.
				E-101 COMPACT. SUBGR.	200 S.Y.

EXCAVATION	=	359	C.Y.
EQUIPMENT	=	37	C.Y.
EQUIPMENT @ 17.5%	=	43	C.Y.