

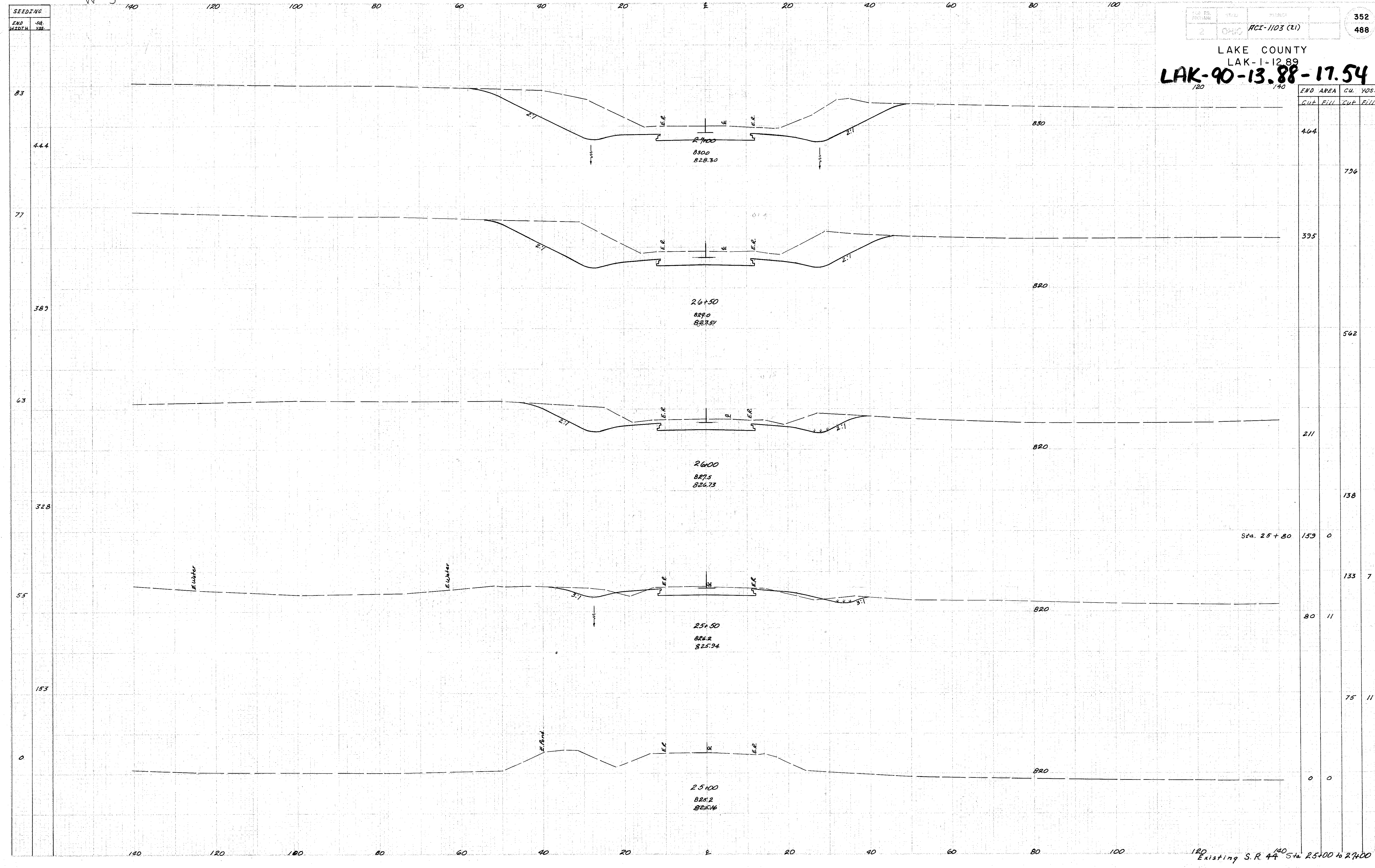
E-M

W-3

2	OHIO	HCI-1103 (21)
---	------	---------------

352
488

LAKE COUNTY
LAK-1-1289
LAK-90-13.88-17.54



END AREA		CU. YDS.	
Cut	Fill	Cut	Fill

4.44			7.96
38.9			5.62
32.8			1.38
15.3			7.5
0			0
	153	0	
	80	11	
	211		
	39.5		
	4.44		

Existing S.R. 44 Sta. 25+00 to 27+00