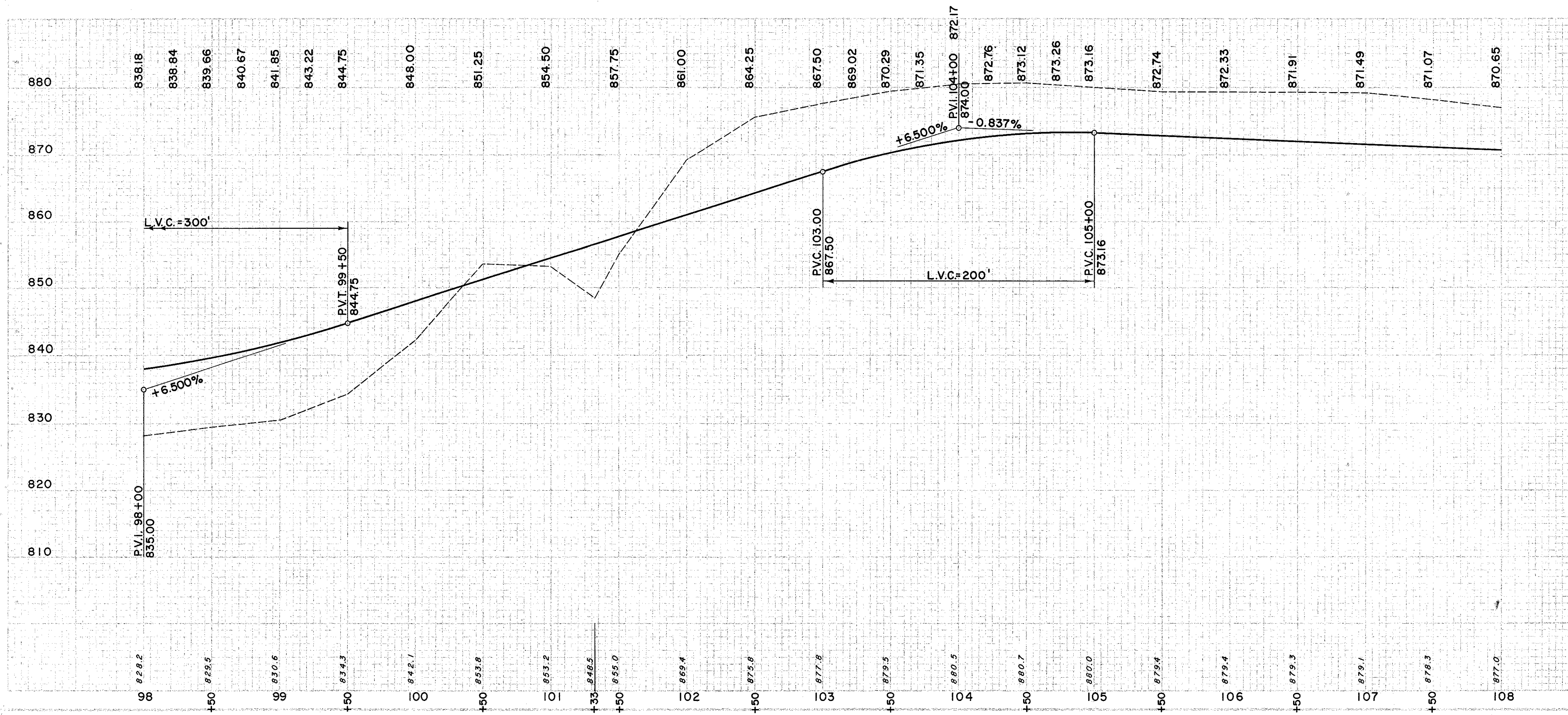
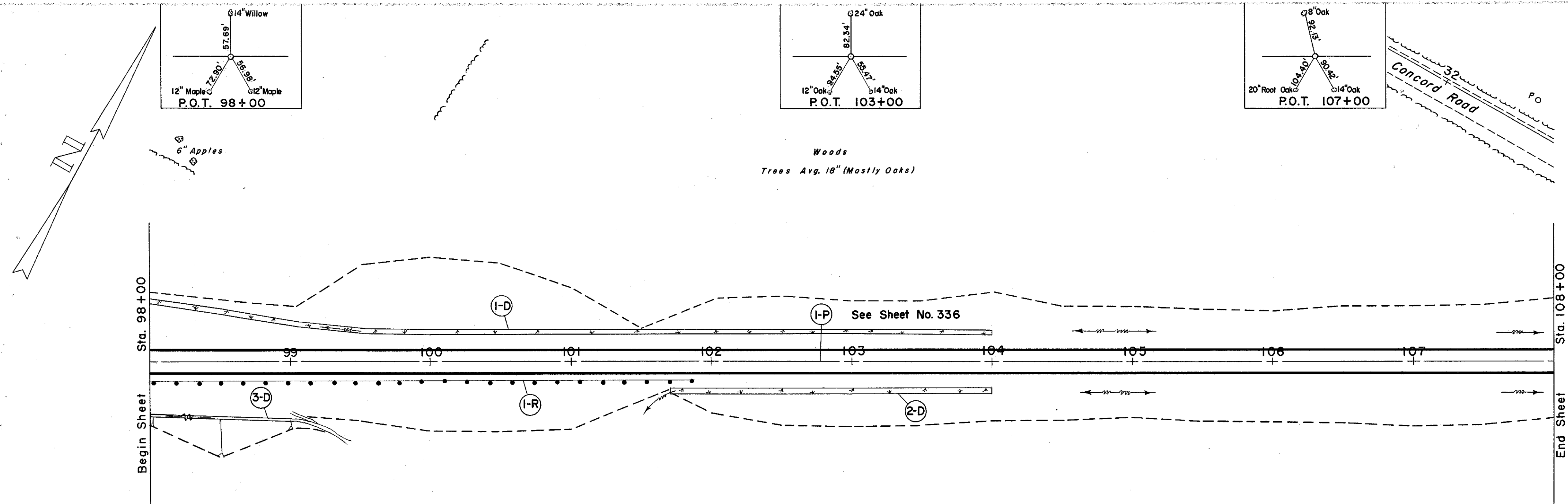


LAKE COUNTY  
LAK-1-12.89



① DRAINAGE

REF NO.	STATION	SIDE	CHANNEL EXC.	SODDING
E-3				L-10
I-D	FROM 98+00 TO 104+00	Lt.	C.Y.	S.Y. 233
2-D	FROM 101+70 TO 104+00	Rt.		S.Y. 89
3-D	FROM 98+00 TO 99+25	Rt.		S.Y. 255

② ROADWAY

REF NO.	STATION	SIDE	1-15 GUARD RAIL WIRE CABLE 3 CABLES L.F.	Rt.
I-R	FROM 98+01 TO 101+85	Rt.		384

SODDING LEFT DITCH			
STATION	DEPTH OF SODDING FT.	SLOPES F B	WIDTH OF SODDING FT.
98+00	0.3	4:1	2:1
104+00	0.2	4:1	2:1
SUB-TOTAL			
101+70	0.3	4:1	2:1
104+00	0.2	4:1	2:1
SUB-TOTAL			

EXCAVATION	= 17,074 C.Y.
EMBANKMENT	= 4,297 C.Y.
EMBANKMENT -17.5'	= 5,049 C.Y.