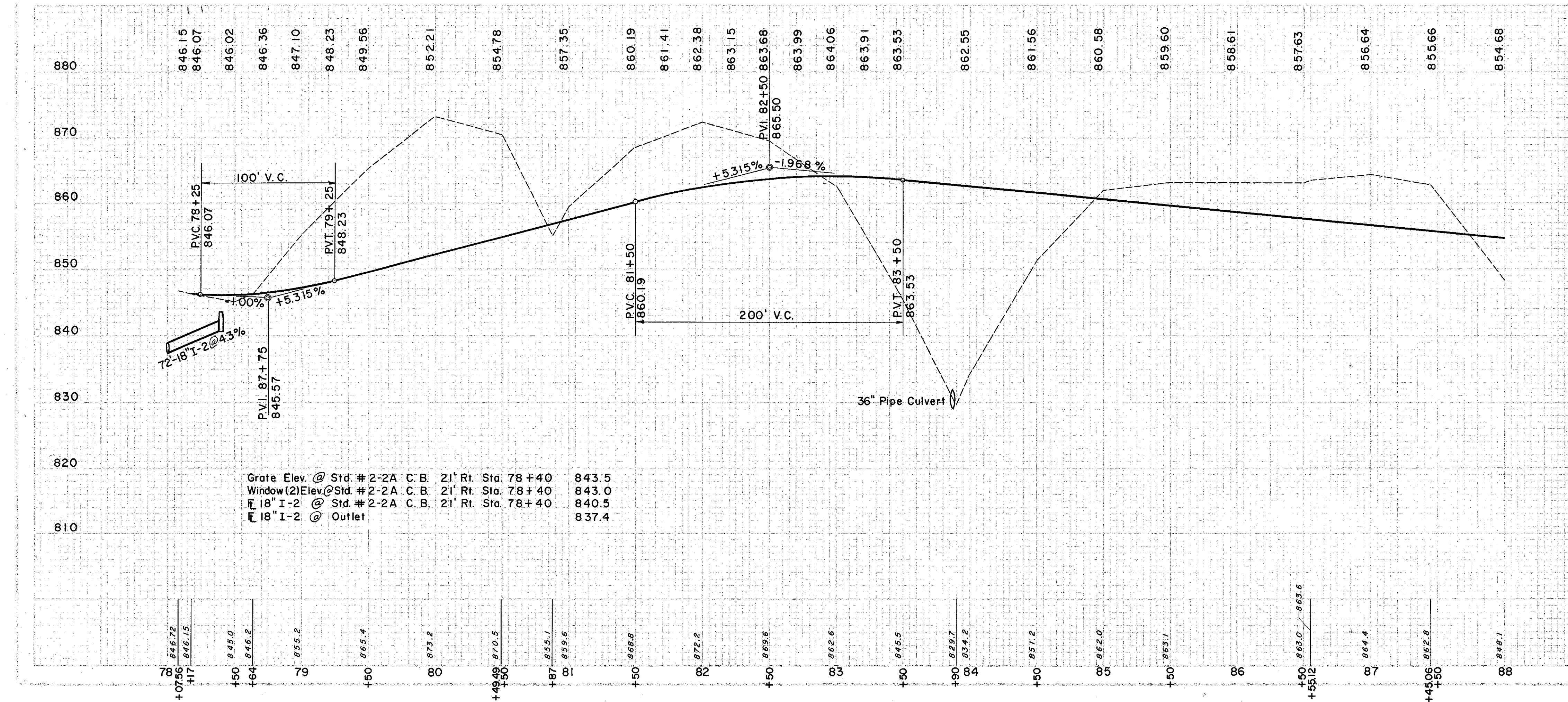


SUPERELEVATION TABLE

STATION	LT EDGE	PROFILE	RT EDGE	WIDENING RT EDGE
85 + 50	859.50	859.60	859.46	9.00
+ 75	859.07	859.11	858.97	9.00
86 + 00	858.67	858.61	858.39	9.33
+ 25	858.34	858.14	857.73	10.09
+ 50	857.98	857.63	857.14	10.84
+ 75	857.63	857.14	856.53	11.61
87 + 00	857.27	856.64	855.89	12.37
+ 25	856.66	856.17	855.56	11.61
+ 50	856.01	855.66	855.17	10.85
+ 75	855.39	855.19	854.79	10.10
88 + 00	854.74	854.68	854.46	9.33
+ 25	854.15	854.19	854.05	9.00
+ 50	853.59	853.69	853.55	9.00



(P) PAVEMENT

REF. NO.	STATION	FROM	TO	T-35 ASPH. SURFACE COURSE (NO-2)	T-32 AGGR. FOR ROAD MIX	NO. 6 AGGR. FOR SEAL COAT	NO. 6 AGGR. FOR CHOKER	I-9 STONE UNDER DRAIN	I-22 SUBBASE
I-R	82+99	83+15	84+75	C.Y.	C.Y.	C.Y.	C.Y.	L.F.	C.Y.
2-R	83+15	84+75	84+75	3.7	4.10	29	59	1022	901

(S) STRUCTURES

REF. NO.	STATION	E-2 EXCAV FOR STRUCT.	S-1 CONC. FOR STRUCT.	S-27 8" PIPE CULVERTS	I-10 DUMPED ROCK CHANNEL	L-10 SODDING
I-S	83+86	C.Y.	C.Y.	L.F.	C.Y.	S.Y.
		17	1.18	166	7	12

SODDING LEFT DITCH

STATION	DEPTH OF SLOPES	WIDTH	LENGTH	S.Y.		
78+50	3	4.1	2.1	3.8	2.25	88
80+75	2	4.1	2.1	3.2	1.06	35
81+10	2	4.1	2.1	3.2		
82+00	1	4.1	3.1	2.7		
SUBTOTAL					123	

SODDING RIGHT DITCH

STATION	DEPTH OF SLOPES	WIDTH	LENGTH	S.Y.		
78+40	5	4.1	2.1	5.0	3.60	164
82+00	2	4.1	2.1	3.2		
SUBTOTAL					164	

(D) DRAINAGE

REF. NO.	STATION	FROM	TO	I-15 GUARD RAIL, WIRE CABLES	E-12 EXCAV FOR STRUCT.	S-1 CONC. FOR STRUCT.	I-2 18" CLASS STORM SEWER UNDER (PAV'TH UNDER)	I-8 STD. # 2-2A CATCH-BASIN	I-10 DUMPED ROCK CHANNEL PROTECT.	L-10 SODDING
I-D	78+20	78+40	82+00	L.F.	C.Y.	C.Y.	L.F.	EA	C.Y.	S.Y.
2-D	78+50	82+00	82+00	15	52	0.3	72	1	12	164
3-D	78+50	82+00	82+00						12	123
4-D	87+80	87+80	87+80						15	

EXCAVATION = 18,327 C.Y.
EMBANKMENT = 8,200 C.Y.
TOTAL = 9,635 C.Y.