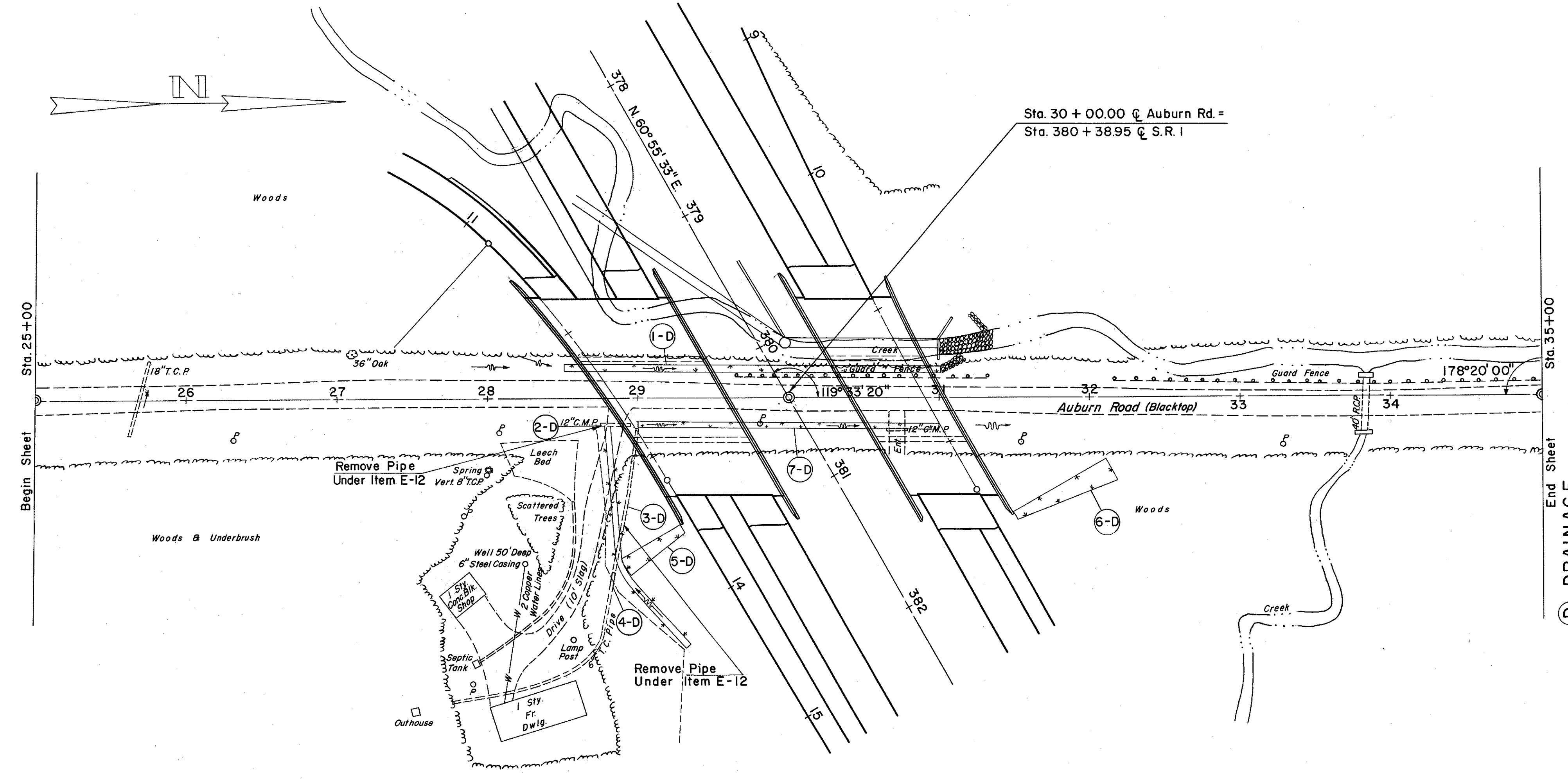


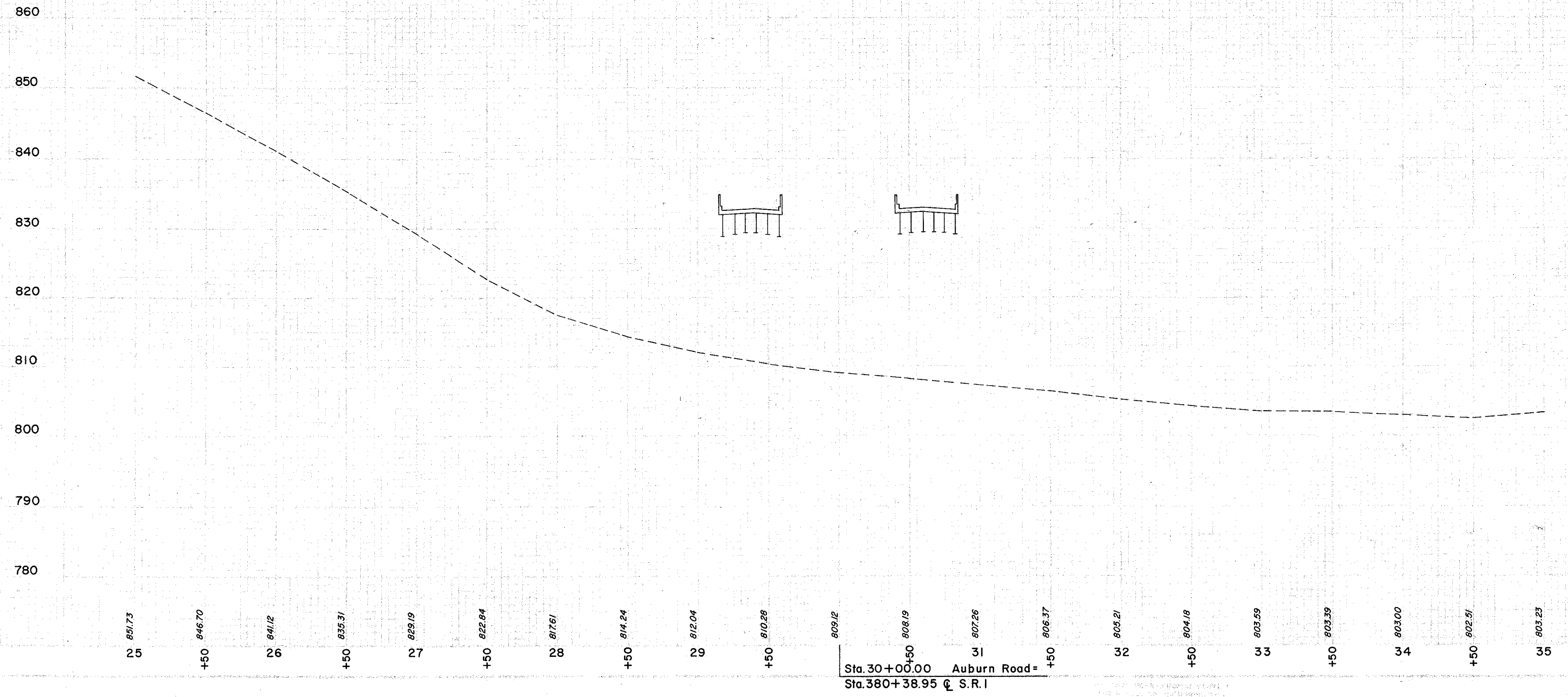
LAKE COUNTY
LAK-1-12.89



(D) DRAINAGE

REF. NO.	STATION	SIDE SODDING		L.T.	S.Y.		L.F.	L.F.
		FROM	TO		RT.	LT.		
1-D	28+50	31+00				194		
2-D	28+85			RT.			21	
3-D	28+90			RT.			102	
4-D	28+83			RT.				10
5-D	28+90	29+30	RT.				49	
6-D	31+50	32+20	RT.				91	
7-D	29+00	31+00	RT.			64		

SODDING LEFT DITCH		SODDING RIGHT DITCH	
STATION	DEPTH OF SLOPES	STATION	DEPTH OF SLOPES
F.T.	F.T.	F.T.	F.T.
28+50	0.5	4-1	2.1
31+00	0.5	4-1	2.1
29+00	0.15	4-1	2.1
31+00	0.15	4-1	2.1



EXCAVATION =
EMBANKMENT =
EMBANKMENT + % =

AUBURN ROAD STA. 25+00 TO STA. 35+00