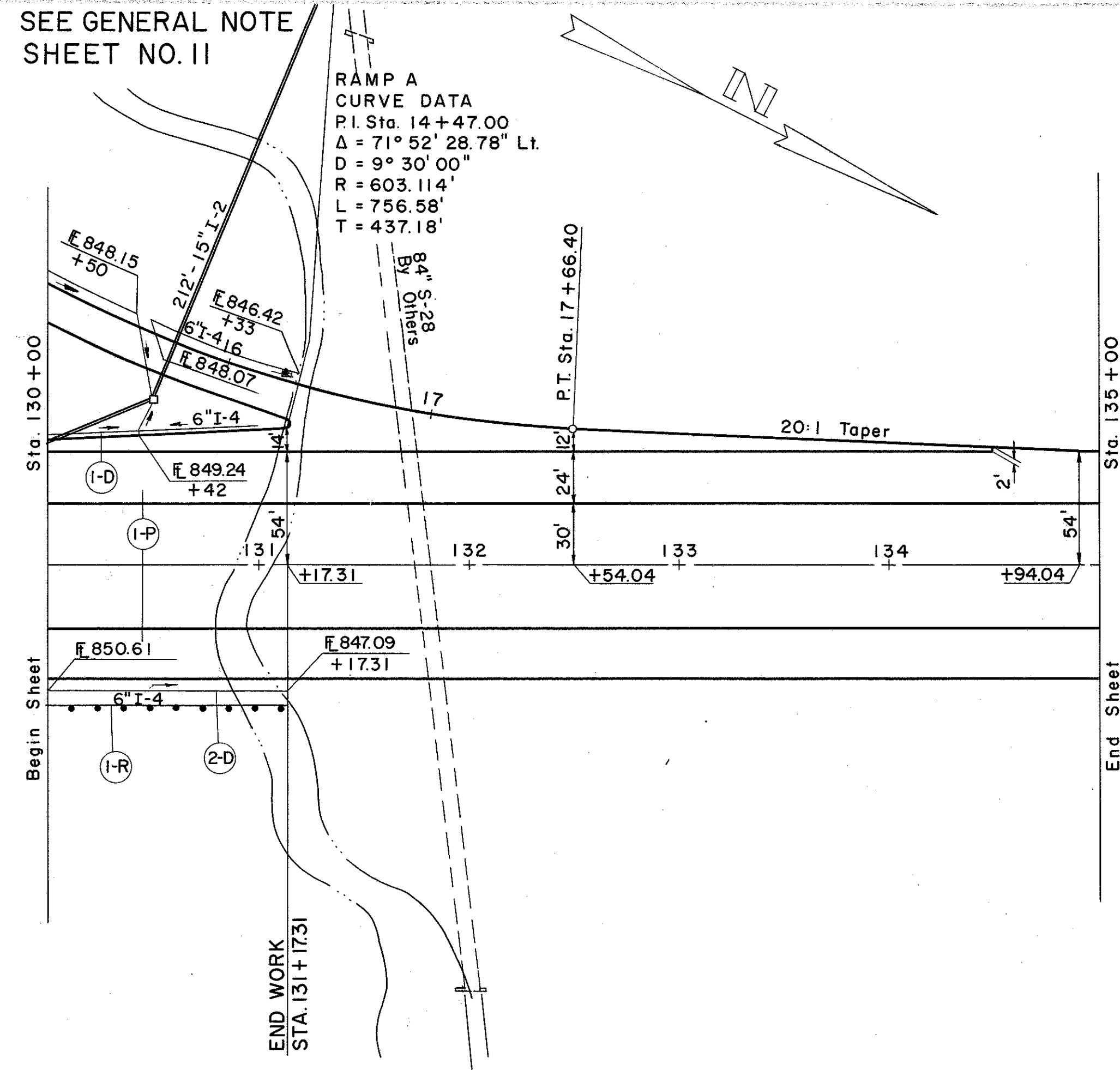
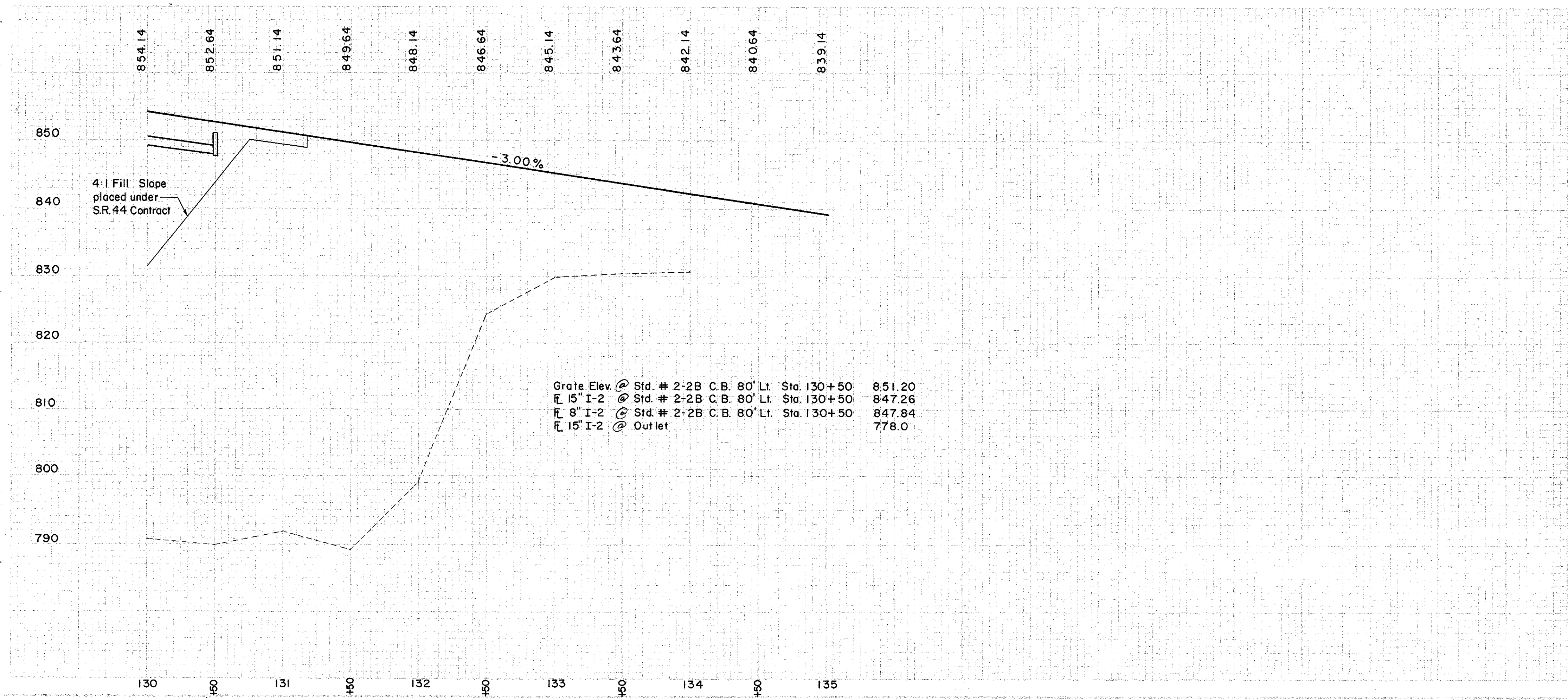


SEE GENERAL NOTE SHEET NO. II



RAMP A
CURVE DATA
P.I. Sta. 14+47.00
Δ = 71° 52' 28.78" Lt.
D = 9° 30' 00"
R = 603.114'
L = 756.58'
T = 437.18'

LAKE COUNTY
LAK-I-12.89



(R) ROADWAY

REF. NO.	STATION	SIDE
I-R	FROM 130+00 TO 131+17	RT.

(P) PAVEMENT

REF. NO.	STATION	SIDE	T-71 CONC.	T-71 S.Y.	B-33 MATL.	T-31 GAL.	T-31 AGGR.	T-31 NO. 6 AGGR.	I-18 5" C.Y.	I-18 SUB. BASE C.Y.	I-22 E-101 SUPER. C.Y.
I-P	130+00 131+17.31		743	300	300	150	2.4	2.4	45	180	1043

(D) DRAINAGE

REF. NO.	STATION	SIDE	DESCRIPTION	FROM	TO	LT.	RT.
I-4			SHALLOW 8" UNDER-DRAIN	104	10		
I-5			6" 60° WYE				
I-8			2-2B CATCH BASIN				

EXCAVATION	65	C.Y.
EMBANKMENT	6,860	C.Y.
EMBANKMENT	175	8,060