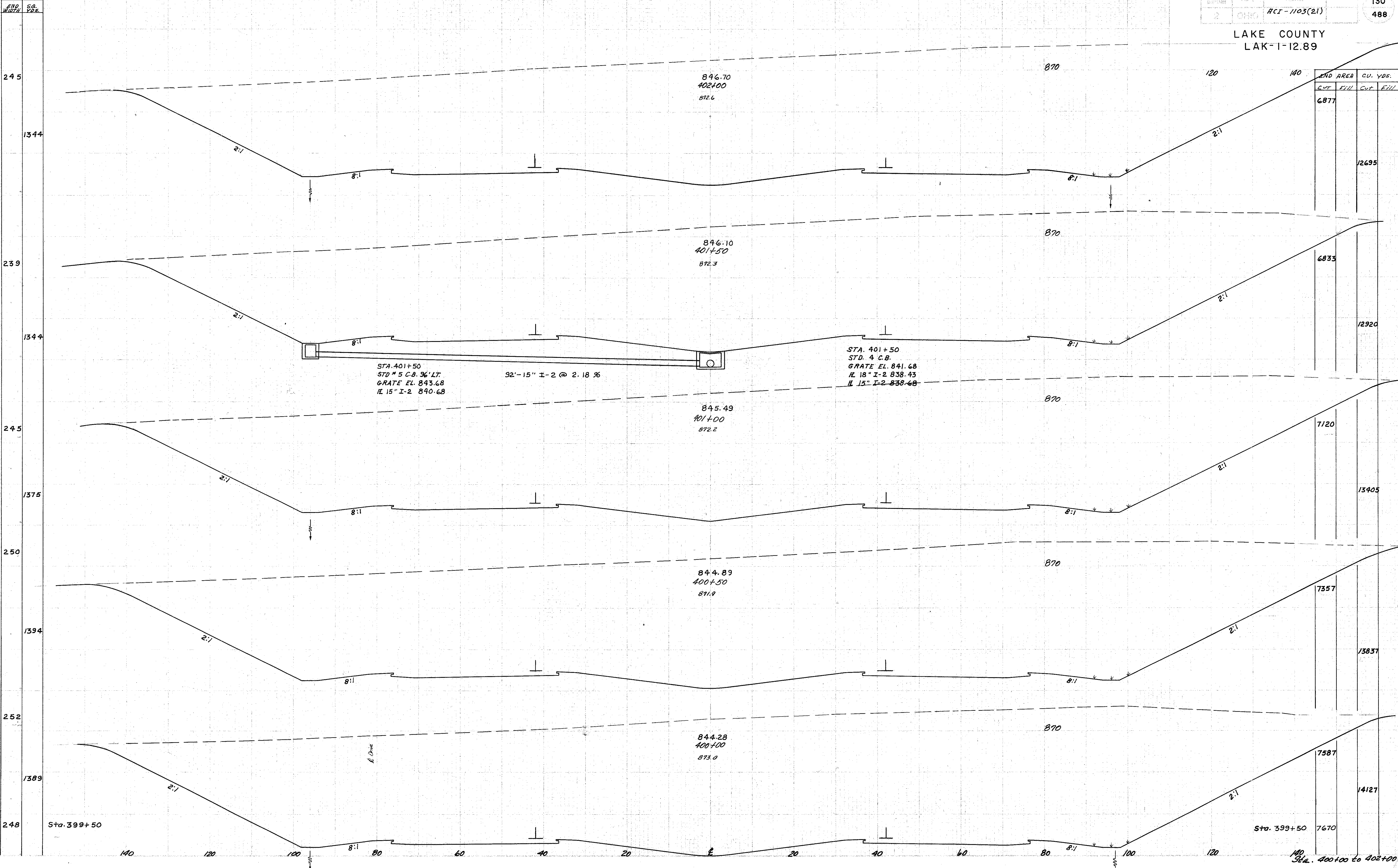


SEEDING 140 120 100 80 60 40 20 0 20 40 60 80 100



STA. 401+50
STD. 5 C.B. 36' LT.
GRATE EL. 843.68
R. 15" I-2 840.68

92'-15" I-2 @ 2.18 %

STA. 401+50
STD. 4 C.B.
GRATE EL. 841.68
R. 18" I-2 838.43
R. 15" I-2 838.68

E. Drive

Sta. 399+50

Sta. 399+50

140 Sta. 400+00 to 402+00