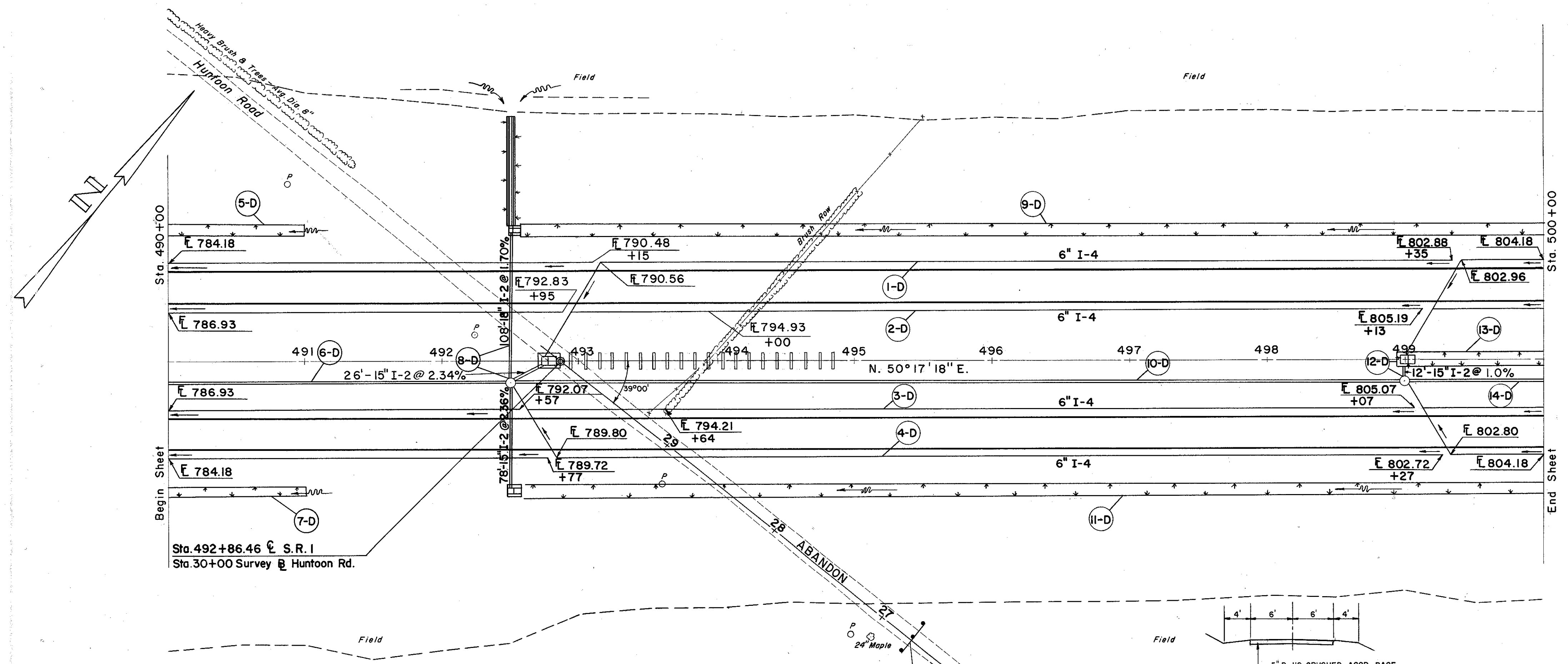
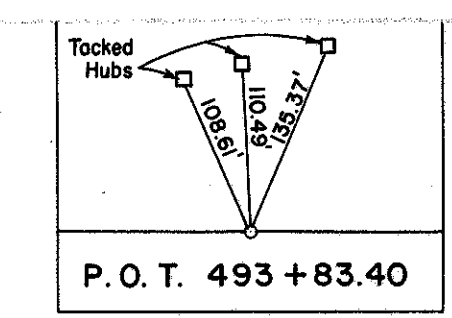


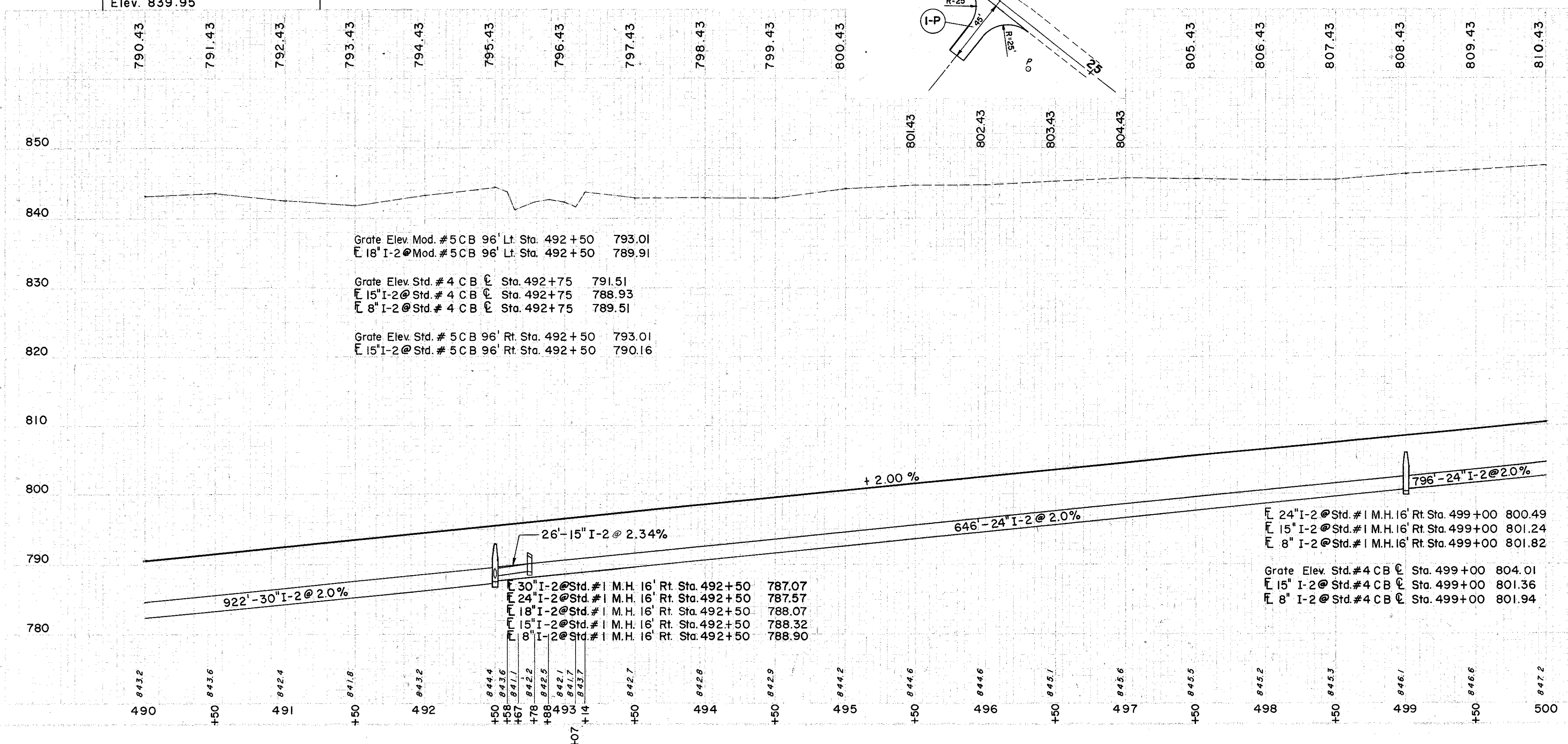
LAKE COUNTY
LAK-1-12.89



B.M. # 55 Lag Bolt in PP# 574 496
130' Lt. of Sta. 490+80
Elev. 839.95

See Sheet No. 369
For Profile & Cross Section
of Cul-de-Sac.

TYPICAL SECTION CUL-DE-SAC



REF. NO.	STATION	CLASS "A" STORM SEWER UNDER PAVEMENT SEC. M-6.5 (b) OR SEC. M-6.8 (b)	STORM SEWER		DRAINAGE		I-5	I-8	I-10	S.Y.
			SEC. M-6.5 (g) OR SEC. M-6.8 (g)	LIN. FT.	8" OUTLET PIPE SEC. M-6.4 (g)	6" PIPE UNDER DRAIN DEEP				
1-D	490+00	132	15"	24"	20	992	2	2	67	67
2-D	490+00	100	15"	24"	20	992	2	2	67	67
3-D	490+00	100	15"	24"	20	992	2	2	67	67
4-D	490+00	100	15"	24"	20	992	2	2	67	67
5-D	490+00	100	15"	24"	20	992	2	2	67	67
6-D	490+00	100	15"	24"	20	992	2	2	67	67
7-D	490+00	100	15"	24"	20	992	2	2	67	67
8-D	492+50	646	15"	24"	20	992	2	2	708	708
9-D	492+50	646	15"	24"	20	992	2	2	750	750
10-D	492+50	646	15"	24"	20	992	2	2	116	116
11-D	492+50	646	15"	24"	20	992	2	2	116	116
12-D	499+00	98	15"	24"	20	992	2	2	116	116
13-D	499+00	98	15"	24"	20	992	2	2	116	116
14-D	499+00	98	15"	24"	20	992	2	2	116	116

PAVEMENT

REF. NO.	STATION	SIDE	Lt.
I-P	25+83	Huntoon Rd.	12.5

ROADWAY

REF. NO.	STATION	SIDE	Lt.
I-R	26+75	Huntoon Rd.	25

STATION	DEPTH OF SODDING FT.	SLOPES		WIDTH OF SODDING FT.	LENGTH FT.	S.Y.
		F	B.			
490+00	0.2	8:1	2:1	6.0	100	67
491+00	0.2	8:1	2:1	6.0	100	67
492+50	0.5	8:1	2:1	9.0	750	750
500+00	0.4	8:1	2:1	8.0	817	817
SUB-TOTAL						
490+00	0.2	8:1	2:1	6.0	100	67
491+00	0.2	8:1	2:1	6.0	100	67
492+50	0.6	8:1	2:1	10.0	750	750
500+00	0.4	8:1	2:1	8.0	817	817
SUB-TOTAL						
499+00	0.4	8:1	8:1	10.4	100	116
500+00	0.4	8:1	8:1	10.4	100	116
SUB-TOTAL						

EXCAVATION	455, 152 C.Y.
EMBANKMENT	0 C.Y.
CONCRETE	0 C.Y.