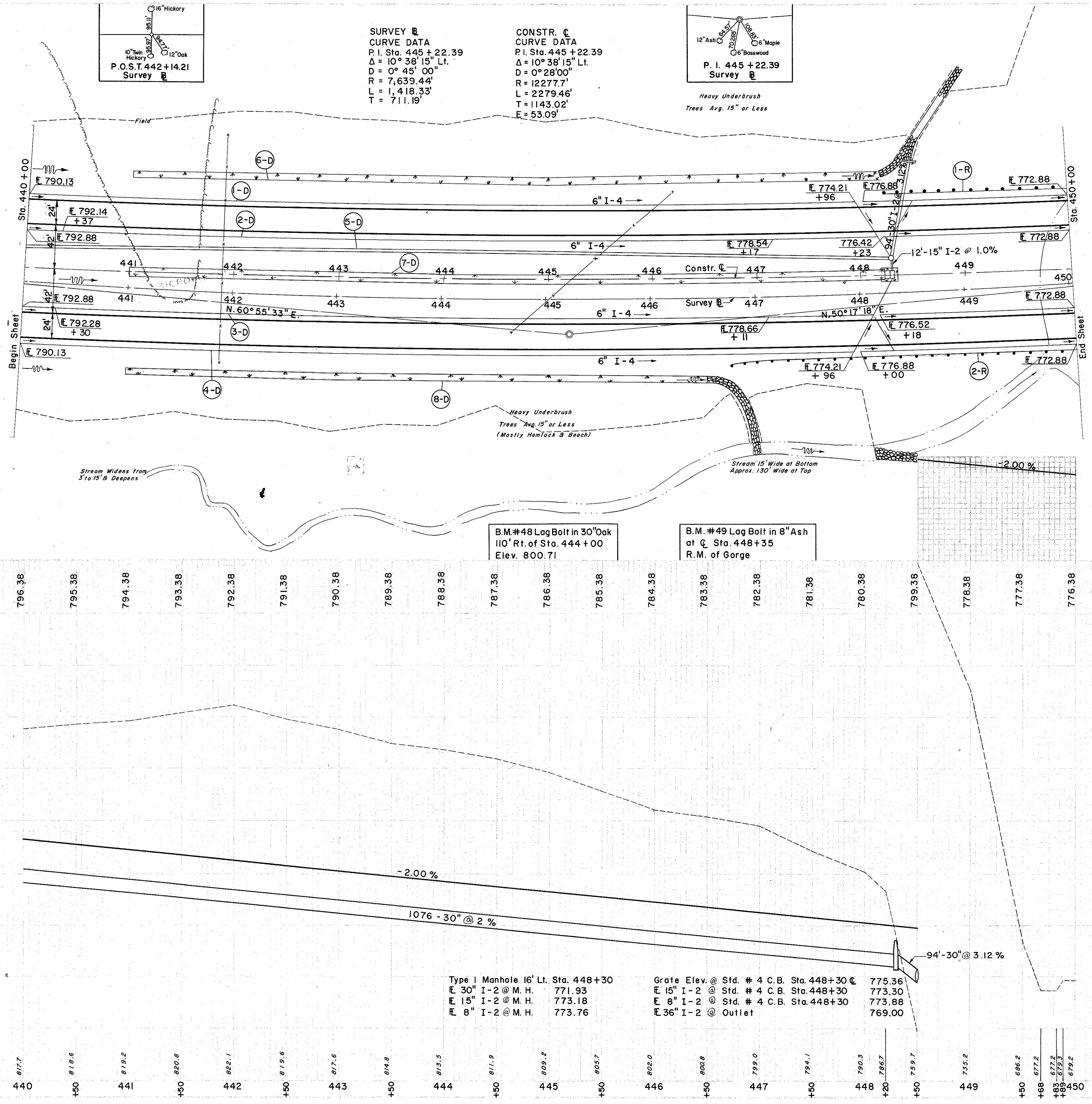


LAKE COUNTY
LAK-1-12.89



(D) DRAINAGE

REF. NO.	STATION	SIDE	STORM SEWER EXC. FOR STRUCT.	PIPE	WYE	BEND	CATCH BASIN	STANDARD CHANNEL PROTECT.	CONC. FOR STRUCT.	REINF. STEEL	6" x 8" WYE INCREASER
I-2	440+00 to 441+00	LT	15"	30"	60°	1	1	1	1	1	1
I-2	441+00 to 442+00	LT	15"	30"	60°	1	1	1	1	1	1
I-2	442+00 to 443+00	LT	15"	30"	60°	1	1	1	1	1	1
I-2	443+00 to 444+00	LT	15"	30"	60°	1	1	1	1	1	1
I-2	444+00 to 445+00	LT	15"	30"	60°	1	1	1	1	1	1
I-2	445+00 to 446+00	LT	15"	30"	60°	1	1	1	1	1	1
I-2	446+00 to 447+00	LT	15"	30"	60°	1	1	1	1	1	1
I-2	447+00 to 448+00	LT	15"	30"	60°	1	1	1	1	1	1
I-2	448+00 to 449+00	LT	15"	30"	60°	1	1	1	1	1	1
I-2	449+00 to 450+00	LT	15"	30"	60°	1	1	1	1	1	1
I-2	440+00 to 441+00	RT	15"	30"	60°	1	1	1	1	1	1
I-2	441+00 to 442+00	RT	15"	30"	60°	1	1	1	1	1	1
I-2	442+00 to 443+00	RT	15"	30"	60°	1	1	1	1	1	1
I-2	443+00 to 444+00	RT	15"	30"	60°	1	1	1	1	1	1
I-2	444+00 to 445+00	RT	15"	30"	60°	1	1	1	1	1	1
I-2	445+00 to 446+00	RT	15"	30"	60°	1	1	1	1	1	1
I-2	446+00 to 447+00	RT	15"	30"	60°	1	1	1	1	1	1
I-2	447+00 to 448+00	RT	15"	30"	60°	1	1	1	1	1	1
I-2	448+00 to 449+00	RT	15"	30"	60°	1	1	1	1	1	1
I-2	449+00 to 450+00	RT	15"	30"	60°	1	1	1	1	1	1
I-2	440+00 to 441+00	LT	15"	30"	60°	1	1	1	1	1	1
I-2	441+00 to 442+00	LT	15"	30"	60°	1	1	1	1	1	1
I-2	442+00 to 443+00	LT	15"	30"	60°	1	1	1	1	1	1
I-2	443+00 to 444+00	LT	15"	30"	60°	1	1	1	1	1	1
I-2	444+00 to 445+00	LT	15"	30"	60°	1	1	1	1	1	1
I-2	445+00 to 446+00	LT	15"	30"	60°	1	1	1	1	1	1
I-2	446+00 to 447+00	LT	15"	30"	60°	1	1	1	1	1	1
I-2	447+00 to 448+00	LT	15"	30"	60°	1	1	1	1	1	1
I-2	448+00 to 449+00	LT	15"	30"	60°	1	1	1	1	1	1
I-2	449+00 to 450+00	LT	15"	30"	60°	1	1	1	1	1	1
I-2	440+00 to 441+00	RT	15"	30"	60°	1	1	1	1	1	1
I-2	441+00 to 442+00	RT	15"	30"	60°	1	1	1	1	1	1
I-2	442+00 to 443+00	RT	15"	30"	60°	1	1	1	1	1	1
I-2	443+00 to 444+00	RT	15"	30"	60°	1	1	1	1	1	1
I-2	444+00 to 445+00	RT	15"	30"	60°	1	1	1	1	1	1
I-2	445+00 to 446+00	RT	15"	30"	60°	1	1	1	1	1	1
I-2	446+00 to 447+00	RT	15"	30"	60°	1	1	1	1	1	1
I-2	447+00 to 448+00	RT	15"	30"	60°	1	1	1	1	1	1
I-2	448+00 to 449+00	RT	15"	30"	60°	1	1	1	1	1	1
I-2	449+00 to 450+00	RT	15"	30"	60°	1	1	1	1	1	1
I-2	440+00 to 441+00	LT	15"	30"	60°	1	1	1	1	1	1
I-2	441+00 to 442+00	LT	15"	30"	60°	1	1	1	1	1	1
I-2	442+00 to 443+00	LT	15"	30"	60°	1	1	1	1	1	1
I-2	443+00 to 444+00	LT	15"	30"	60°	1	1	1	1	1	1
I-2	444+00 to 445+00	LT	15"	30"	60°	1	1	1	1	1	1
I-2	445+00 to 446+00	LT	15"	30"	60°	1	1	1	1	1	1
I-2	446+00 to 447+00	LT	15"	30"	60°	1	1	1	1	1	1
I-2	447+00 to 448+00	LT	15"	30"	60°	1	1	1	1	1	1
I-2	448+00 to 449+00	LT	15"	30"	60°	1	1	1	1	1	1
I-2	449+00 to 450+00	LT	15"	30"	60°	1	1	1	1	1	1
I-2	440+00 to 441+00	RT	15"	30"	60°	1	1	1	1	1	1
I-2	441+00 to 442+00	RT	15"	30"	60°	1	1	1	1	1	1
I-2	442+00 to 443+00	RT	15"	30"	60°	1	1	1	1	1	1
I-2	443+00 to 444+00	RT	15"	30"	60°	1	1	1	1	1	1
I-2	444+00 to 445+00	RT	15"	30"	60°	1	1	1	1	1	1
I-2	445+00 to 446+00	RT	15"	30"	60°	1	1	1	1	1	1
I-2	446+00 to 447+00	RT	15"	30"	60°	1	1	1	1	1	1
I-2	447+00 to 448+00	RT	15"	30"	60°	1	1	1	1	1	1
I-2	448+00 to 449+00	RT	15"	30"	60°	1	1	1	1	1	1
I-2	449+00 to 450+00	RT	15"	30"	60°	1	1	1	1	1	1

(R) ROADWAY

REF. NO.	STATION	WIDTH OF SODDING	DEPTH OF SLOPES	WIDTH OF SODDING	LENGTH	S.Y.
1-R	448+25 to 450+00	8.1	2.1	6.0	720	560
2-R	446+75 to 450+00	8.1	2.1	6.0	550	412
SUB TOTAL						972
TOTAL						972

STATION	DEPTH OF SODDING	WIDTH OF SLOPES	WIDTH OF SODDING	LENGTH	S.Y.	
441+00	2	8.1	2.1	6.0	550	
446+50	.35	8.1	2.1	8.0	412	
SUB TOTAL						962
MEDIAN						768
441+00	3	8.1	8.1	8.8	720	
448+20	.4	8.1	8.1	10.4	768	
SUB TOTAL						1488

Excavation	169,287 C.Y.
Shoring	99,682 C.Y.
Equipment	175
	117,126 C.Y.