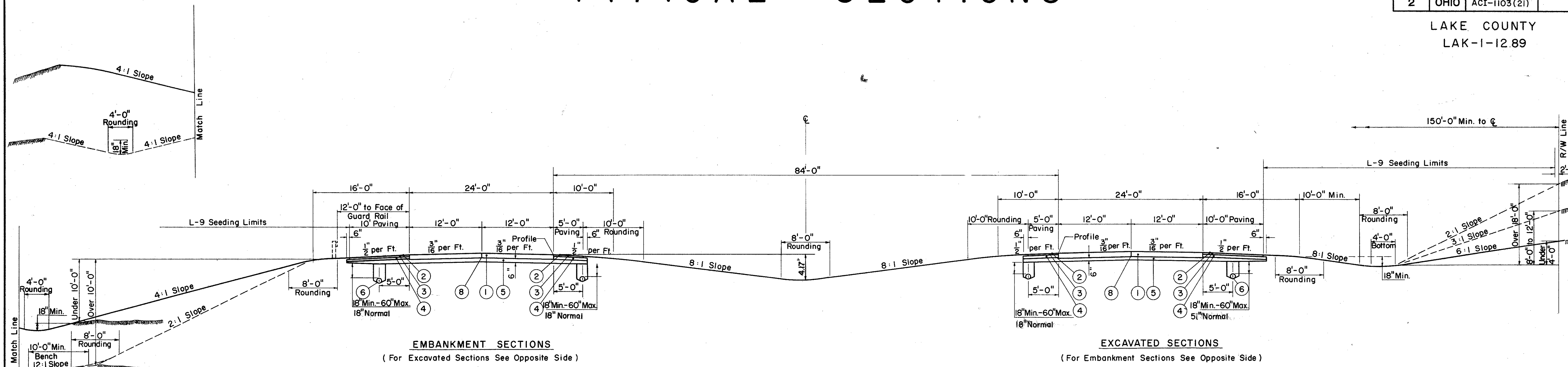


TYPICAL SECTIONS

FED. RD. DIVISION	STATE	PROJECT	
2	OHIO	ACI-1103 (21)	4

4
418

LAKE COUNTY
LAK-1-12.89



EMBANKMENT SECTIONS
(For Excavated Sections See Opposite Side)

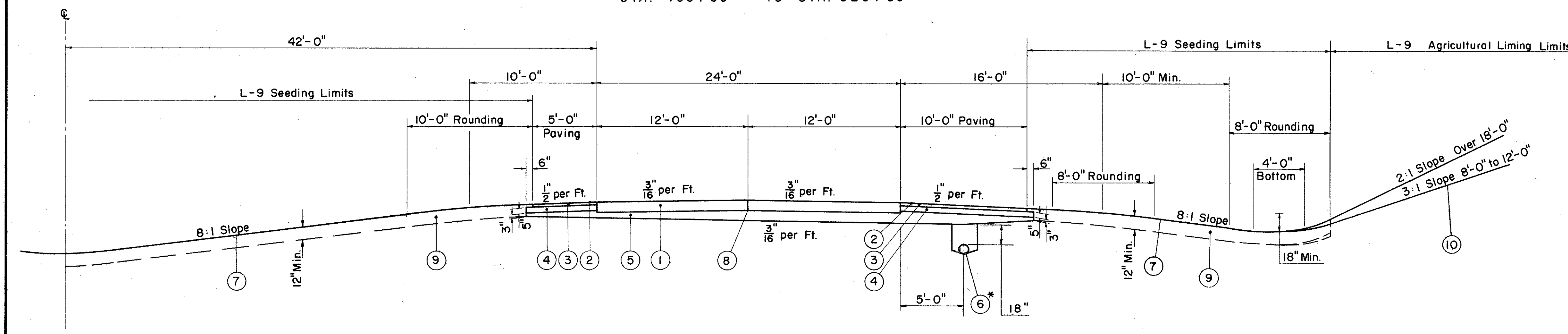
EXCAVATED SECTIONS
(For Embankment Sections See Opposite Side)

TYPICAL SECTION

SCALE: 1/8" = 1'-0"

LIMITING STATIONS

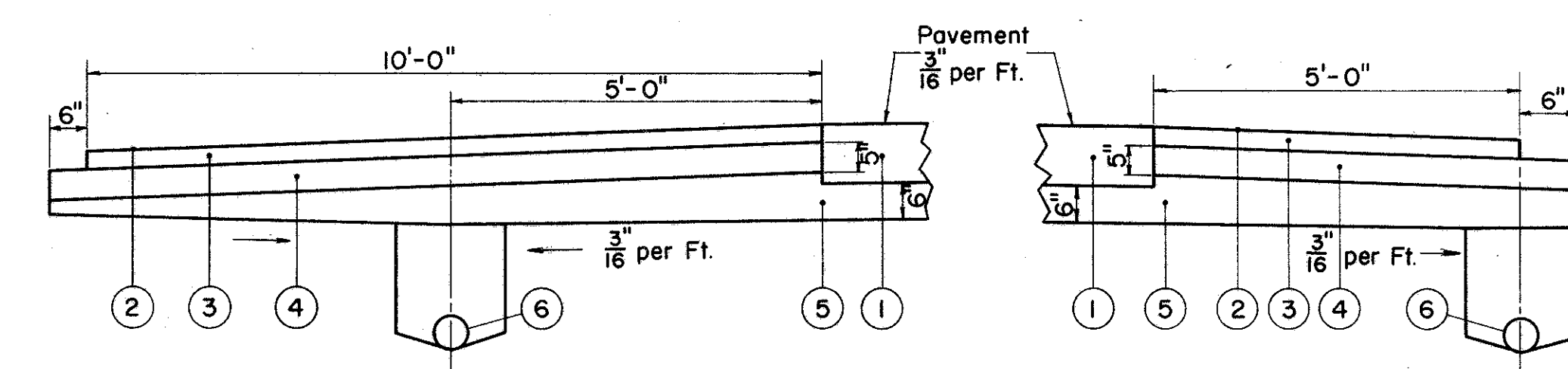
STA. 348+88.59	TO	STA. 367+00	(WESTBOUND LANE)
STA. 374+00	TO	STA. 394+00	
STA. 409+50	TO	STA. 453+00	
STA. 460+00	TO	STA. 520+00	



TYPICAL SECTION (ROCK CUTS - NORMAL SLOPES)

ROCK CUT LIMITING STATIONS

STA. 367+00	TO	STA. 374+00
STA. 394+00	TO	STA. 409+50
STA. 453+00	TO	STA. 460+00



PAVED SHOULDER DETAIL

SCALE: 1/2" = 1'-0"

LEGEND

- ① T-71 10" Reinforced Portland Cement Pavement.
- ② T-31 Bituminous Surface Treatment.
- ③ B-33 3" Bituminous Macadam Base Course.
- ④ I-18 5" Stabilized Crushed Aggregate Shoulders & Approaches.
- ⑤ I-22 Variable Depth Subbase.
- ⑥ I-4 6" Pipe Underdrain. *Sec. M 6.4 (h) thru Rock Cut.
- ⑦ L-9 Seeding & Protecting Roadway Areas.
- ⑧ Standard Longitudinal Joint.
- ⑨ L-1 Topsoil Stockpiled & L-3 Placing Stockpiled Topsoil (See Note).
- ⑩ L-9 Agricultural Liming Material.

NOTE:
Unpaved areas in the Median, Shoulders and Ditches shall be undercut to a depth of Twelve Inches as shown. Topsoil in sufficient amount to replace the undercut shall be paid for under Item L-1 and shall be placed under Item L-3.