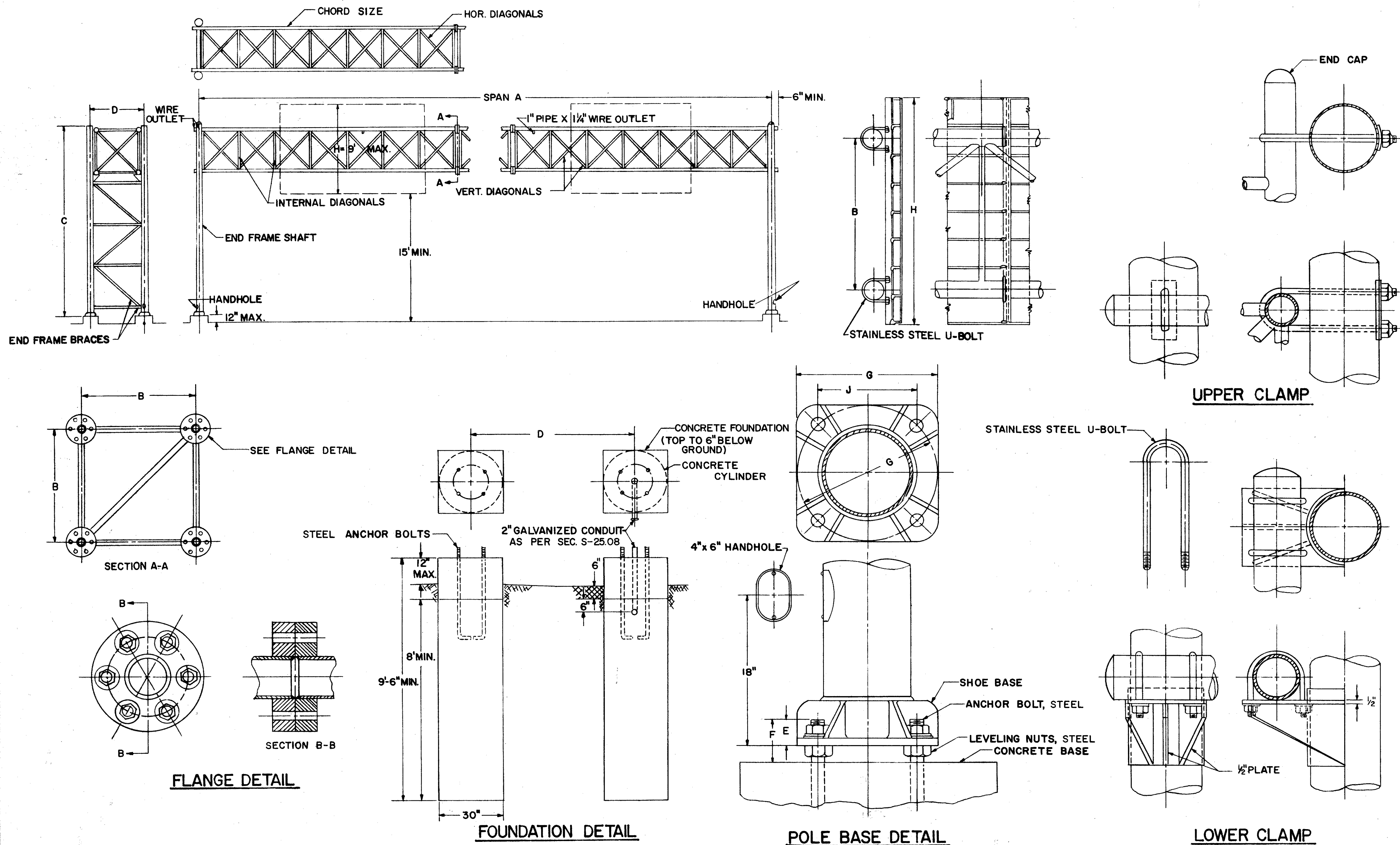


LAKE COUNTY
ASHTABULA COUNTY
LAK.-1-12.89
ATB.-1-0.00

NOTES

FABRICATION:
ALUMINUM TUBING CONFORMING TO A.S.T.M. DESIGNATION B235, ALLOY GS 10A-T6 (6063-T6) MAY BE USED FOR VERTICAL END FRAME SHAFTS.
SPAN SECTIONS ARE REQUIRED AS FOLLOWS:
2 FOR 50' TO 60' SPAN
3 FOR 65' TO 90' SPAN
4 FOR 95' & 105' SPAN

ERECTION:
USE A MIN. OF 1" CAMBER IN THE CROSS-MEMBER FOR A 50' SPAN AND ADD 1/4" OF CAMBER FOR EACH 5' INCREASE IN SPAN OVER 50'. THE GALVANIZED CONDUIT SHALL BE INCLUDED IN THE UNIT PRICE BID FOR OVER-HEAD SIGN SUPPORTS FOR PAYMENT.



DESIGN NO.	SPAN A	B	C	D	E	F	G	J	CHORD SIZE	END FRAME SHAFT	VERTICAL DIAGONAL	HORIZONTAL & VERTICAL DIAGONALS	END FRAME BRACE	ANCHOR BOLTS
1	50'Thru55'	3'-0"	20'-6"	4'-0"	2 3/4"	4 1/4"	12"	8 1/2"	3 1/2" X .188"	8" X 6" X .250"	1.660" X .140"	1.660" X .140"	2" X .188"	1" X 36"
2	60'Thru80'	3'-0"	20'-6"	4'-3"	3 1/4"	5 1/4"	16"	11 5/16"	4 3/4" X .188"	10" X 8" X .188"	1.660" X .140"	1.900" X .145"	2 1/2" X .188"	1 1/2" X 48"
3	85'Thru90'	4'-0"	21'-0"	5'-3"	3 1/4"	5 1/4"	16"	11 5/16"	4 3/4" X .188"	10" X 8" X .188"	1.900" X .145"	1.900" X .145"	3 1/2" X .188"	1 1/2" X 48"
4	95'Thru105'	4'-0"	21'-0"	5'-3"	3 1/4"	5 1/4"	16"	11 5/16"	4 3/4" X .188"	10" X 8" X .188"	1.900" X .145"	2" X .188"	3 1/2" X .188"	1 1/2" X 48"

(300 SQ. FT. SIGN AREA)