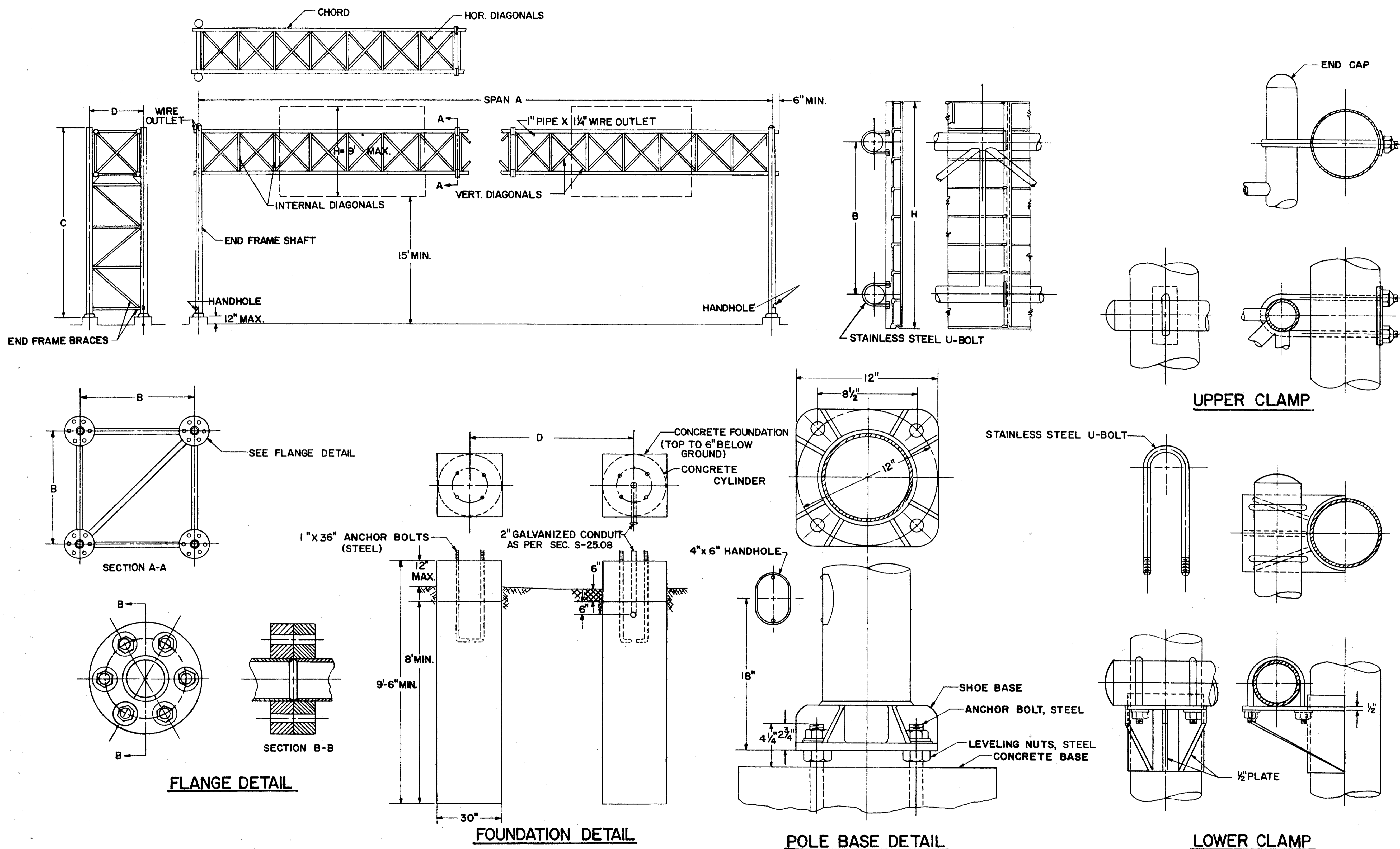


LAKE COUNTY
ASHTABULA COUNTY
LAK-1-12.89
ATB-1-0.00

NOTES

FABRICATION:
ALUMINUM TUBING CONFORMING TO A.S.T.M. DESIGNATION B235, ALLOY GS 10A-T6 (6063-T6) MAY BE USED FOR VERTICAL END FRAME SHAFTS. SPAN SECTIONS ARE REQUIRED AS FOLLOWS:
2 FOR 50' TO 60' SPAN
3 FOR 65' TO 90' SPAN
4 FOR 95' & 105' SPAN

ERECTION:
USE A MIN. OF 1" CAMBER IN THE CROSS-MEMBER FOR A 50' SPAN AND ADD 1/4" OF CAMBER FOR EACH 5' INCREASE IN SPAN OVER 50'. THE GALVANIZED CONDUIT SHALL BE INCLUDED IN THE UNIT PRICE BID FOR OVERHEAD SIGN SUPPORT FOR PAYMENT.



DESIGN NO.	SPAN A	B	C	D	CHORD SIZE	END SHAFT	VERTICAL, INTERNAL & HORIZONTAL DIAGONALS	END BRACES
1	50'Thru 70'	2'-6"	20'-6"	3'-6"	3 1/2" X .188"	8" X 6" X .250"	1.660" X .140"	1.900" X .145"
2	75'Thru 85'	3'-0"	20'-6"	4'-0"	3 1/2" X .188"	8" X 6" X .250"	1.660" X .140"	2" X .188"
3	90'Thru 105'	4'-0"	21'-0"	5'-1"	4 3/4" X .188"	8" X 6" X .188"	1.900" X .145"	2 1/2" X .188"

(200 SQ. FT. SIGN AREA)