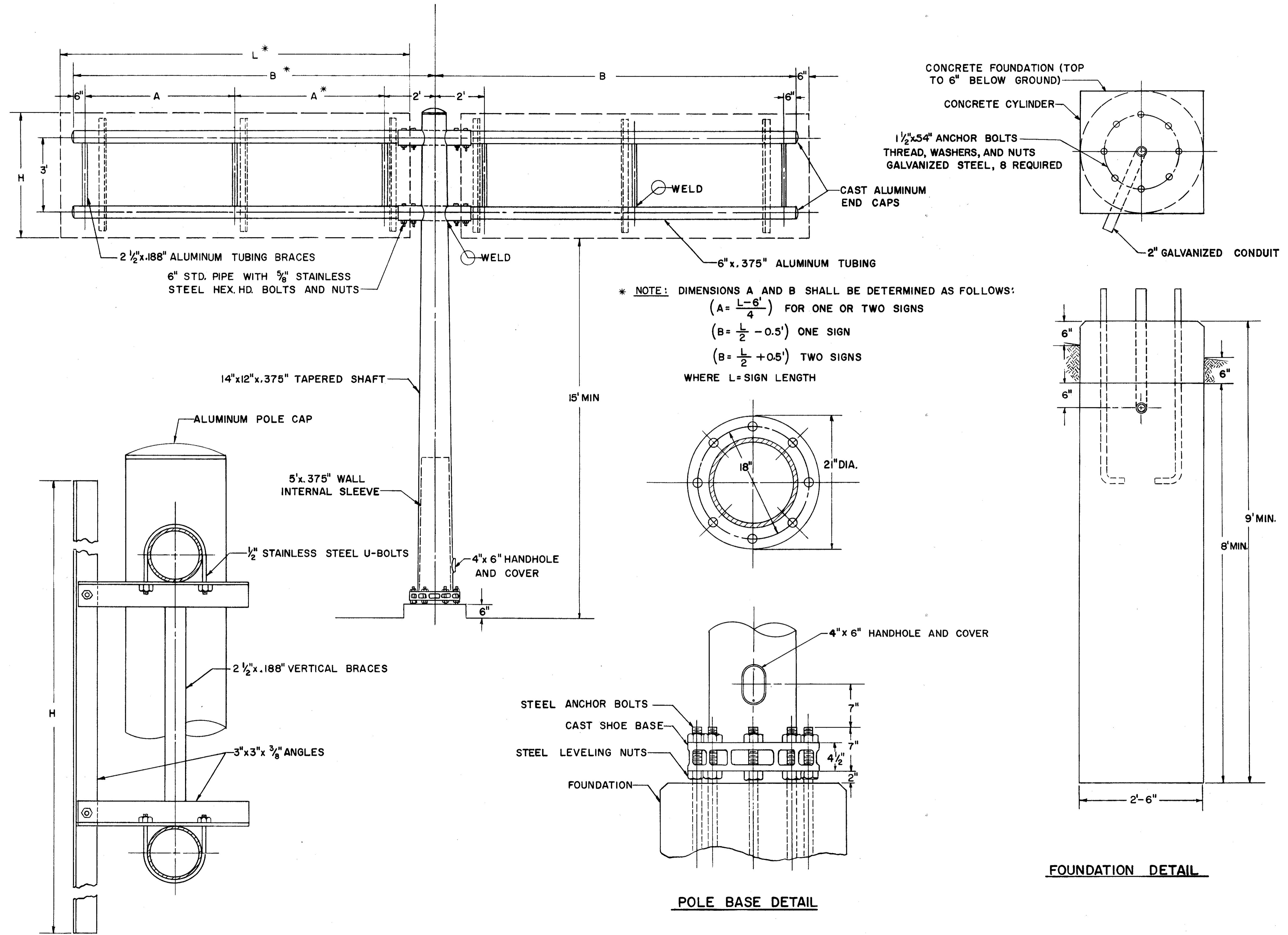


FED. RD. DIVISION	STATE	PROJECT	
2	OHIO		

78
81

LAKE COUNTY
ASHTABULA COUNTY
LAK-1-12.89
ATB-1-0.00
NOTES

FABRICATION:
ALUMINUM CONFORMING TO A.S.T.M.
DESIGNATION B 235, ALLOY GS10A-T6 (6063-T6)
MAY BE USED FOR THE VERTICAL SHAFT.
THE GALVANIZED CONDUIT SHALL CONFORM TO
SEC. S-25.08 AND SHALL BE INCLUDED IN
THE UNIT PRICE BID FOR OVERHEAD SIGN
SUPPORT FOR PAYMENT.



SIGN ATTACHMENT DETAIL

POLE BASE DETAIL

FOUNDATION DETAIL

(140 SQ. FT. SIGN AREA)