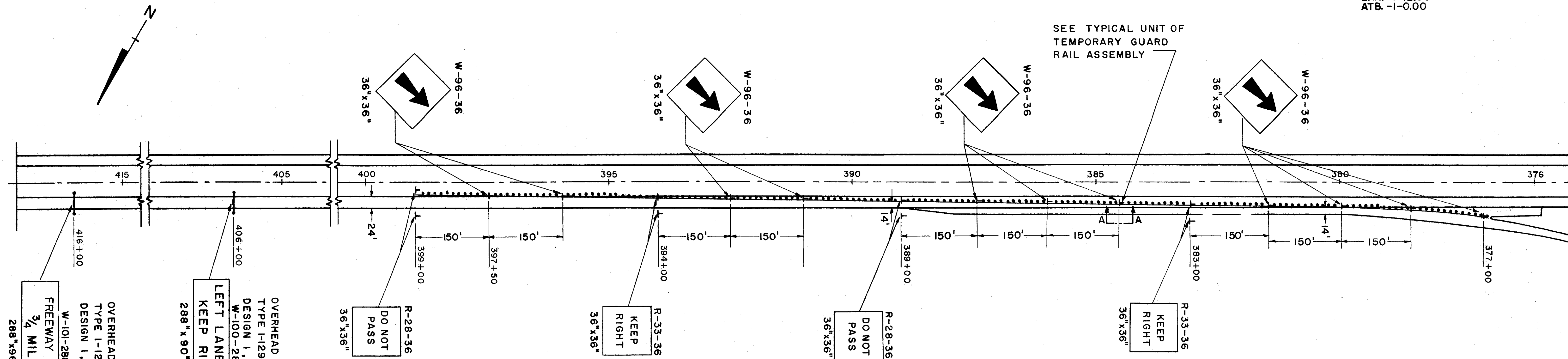


TRANSITION DETAILS



OVERHEAD SIGN SUPPORT
TYPE I-129 No. 8.2
DESIGN I, 50' SPAN
W-101-288
3/4 MILE
288"x96"

OVERHEAD SIGN SUPPORT
TYPE I-129 No. 8.2
DESIGN I, 50' SPAN
W-100-288
LEFT LANE ENDS
KEEP RIGHT
288"x90"

R-28-36
36"x36"
DO NOT PASS

R-33-36
36"x36"
KEEP RIGHT

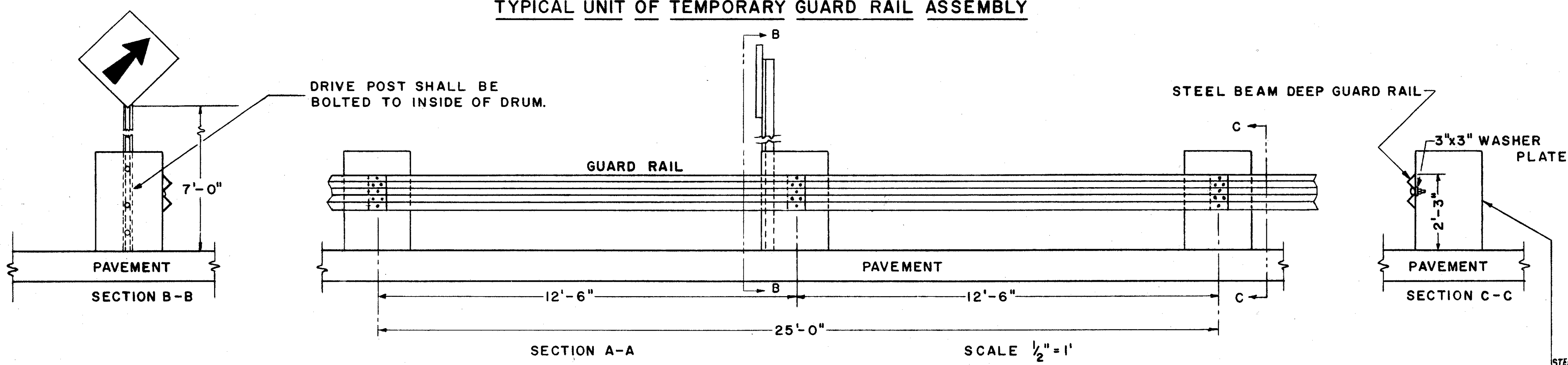
R-28-36
36"x36"
DO NOT PASS

R-33-36
36"x36"
KEEP RIGHT

QUANTITIES

STATION	CODE NUMBER AND SIZE					SUPPORTS		1.12# D.P. BRC.		
	W-100-288 06x88	W-101-288 288x96	R-28-36 36x36	R-33-36 36x36	W-96-36 36x36	OVERHEAD TYPE I-129 No. 8.2	GUARD RAIL 3" # D.P.	PCS.	TOT.	CONC.
	EA.	EA.	EA.	EA.	EA.	EA.	FT.	EA.-FT.	FT.	CU.YDS.
406+00	1					1				7.2
416+00	1					1				7.2
399+00			2				135.00	4 @ 2.00	8.0	
394+00				2			135.00	4 @ 2.00	8.0	
389+00			2				135.00	4 @ 2.00	8.0	
383+00				2			135.00	4 @ 2.00	8.0	
377+00 TO 397+50					11		11 @ 11	22 @ 2.00	44.0	
377+00 TO 399+00							2200			
TOTALS	1	1	4	4	11	2	2200	215	76.0	14.4

TYPICAL UNIT OF TEMPORARY GUARD RAIL ASSEMBLY



NOTES

STEEL BEAM DEEP GUARD RAIL MAY BE NEW OR USED AS APPROVED BY THE ENGINEER. GUARD RAIL ELEMENTS WILL BE CONSTRUCTED AS SHOWN ON STD. CONSTRUCTION DWG. I-15, NO. 2-A, BOLTED TO DRUMS INSTEAD OF POSTS AS SHOWN ABOVE.

DRUMS SHALL BE PAINTED WITH YELLOW EQUIPMENT ENAMEL (SEC. M-9.13) IN ACCORDANCE

WITH SEC. S-8 AND REFLECTORIZED WITH GLASS BEADS. (SEC. M-10.15).

ITEM I-15 "TEMPORARY GUARD RAIL AS PER PLAN" SHALL BE CONSTRUCTED AS SHOWN ABOVE AND COST SHALL INCLUDE ERECTION, PAINTING AND ALL MATERIALS AND INCIDENTALS NECESSARY TO COMPLETE THIS ITEM IN ACCORDANCE WITH SEC. I-15.

STEEL 55 GAL. DRUM TO BE FILLED WITH SUITABLE BALLAST PLACED 12.5' CENTER TO CENTER.