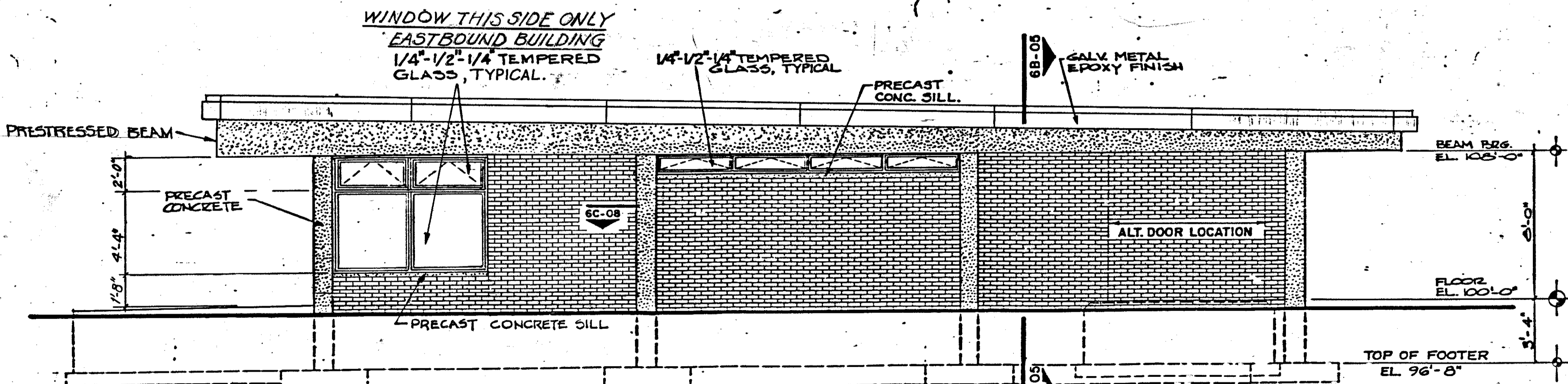
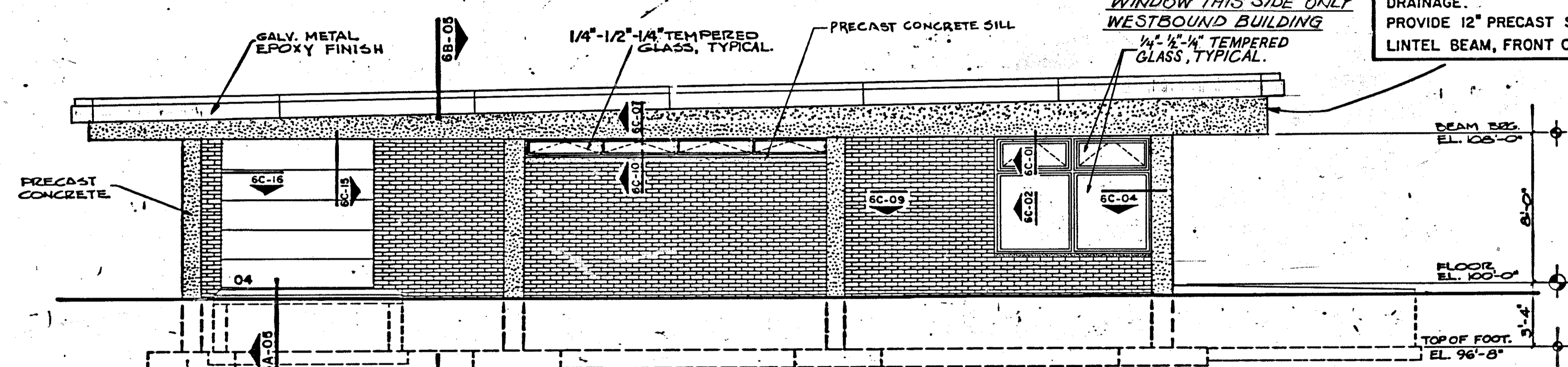
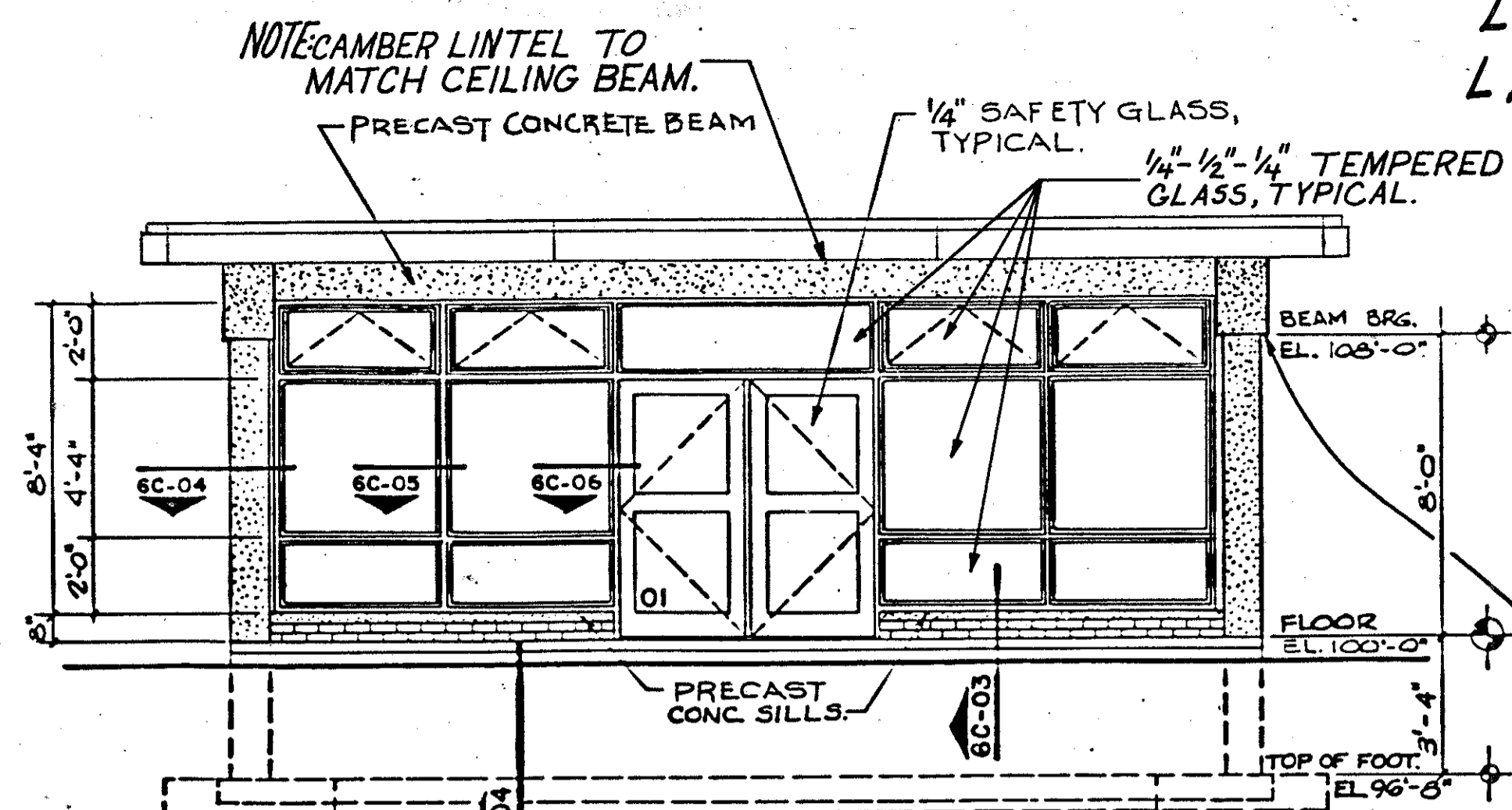
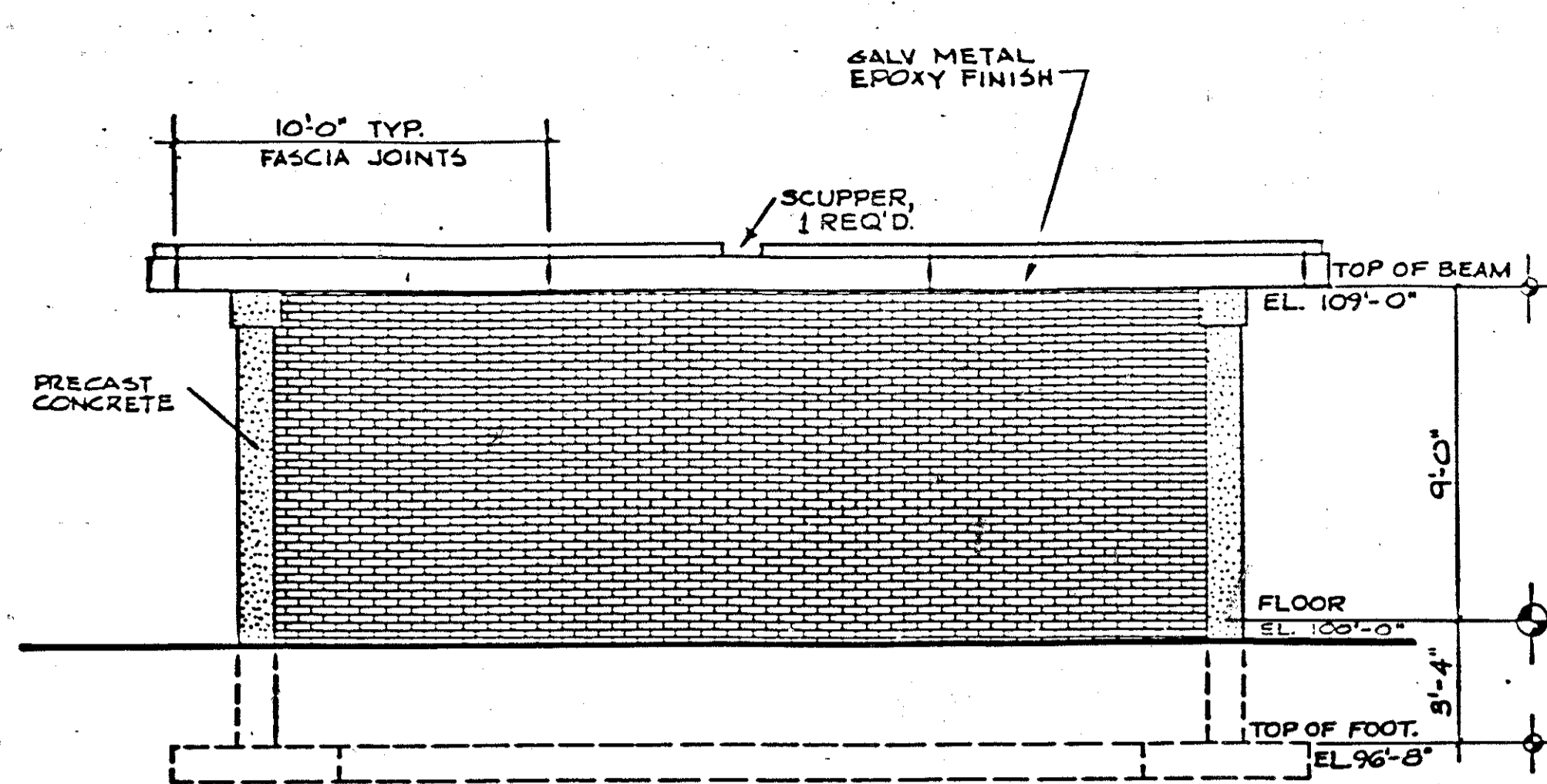
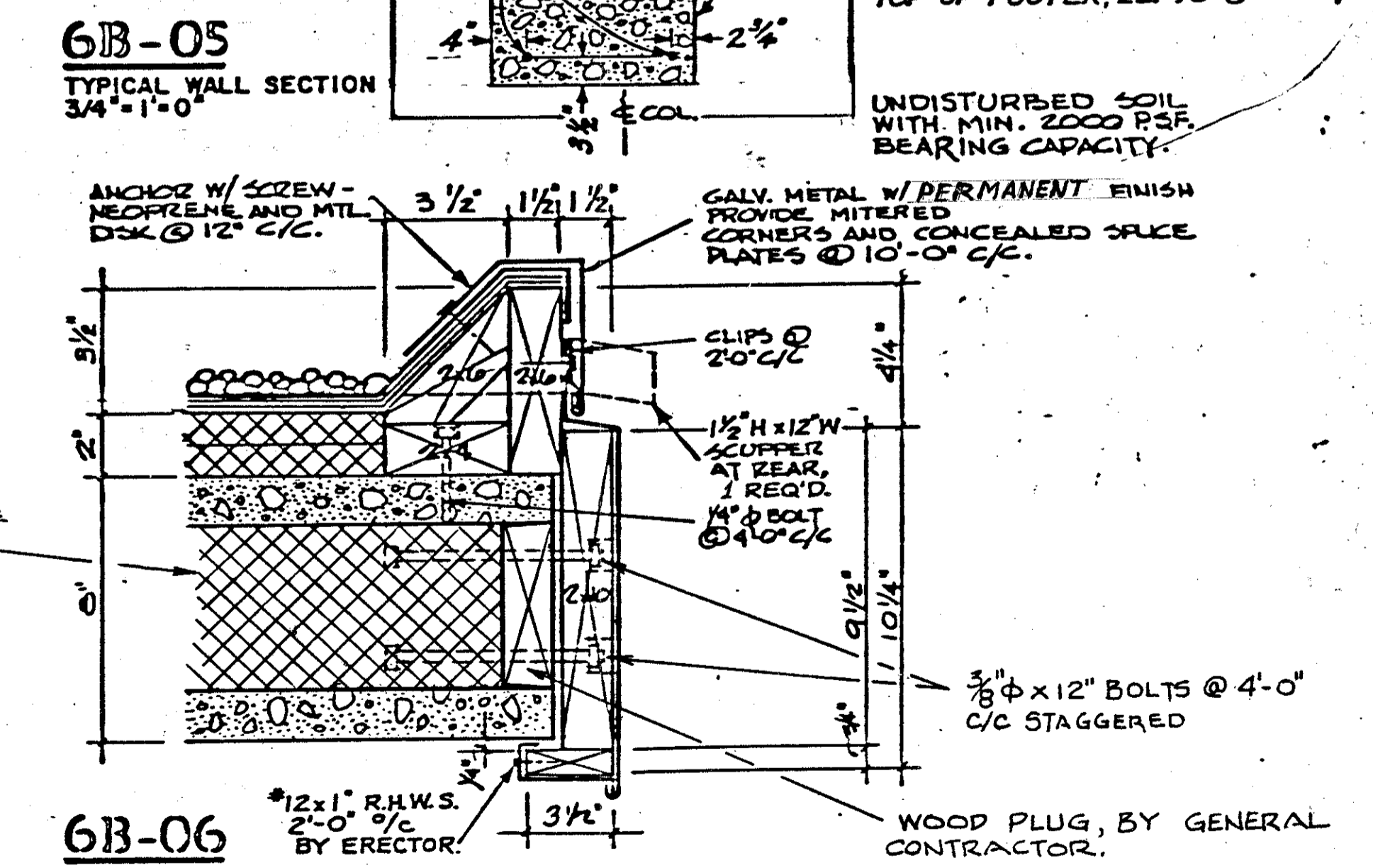
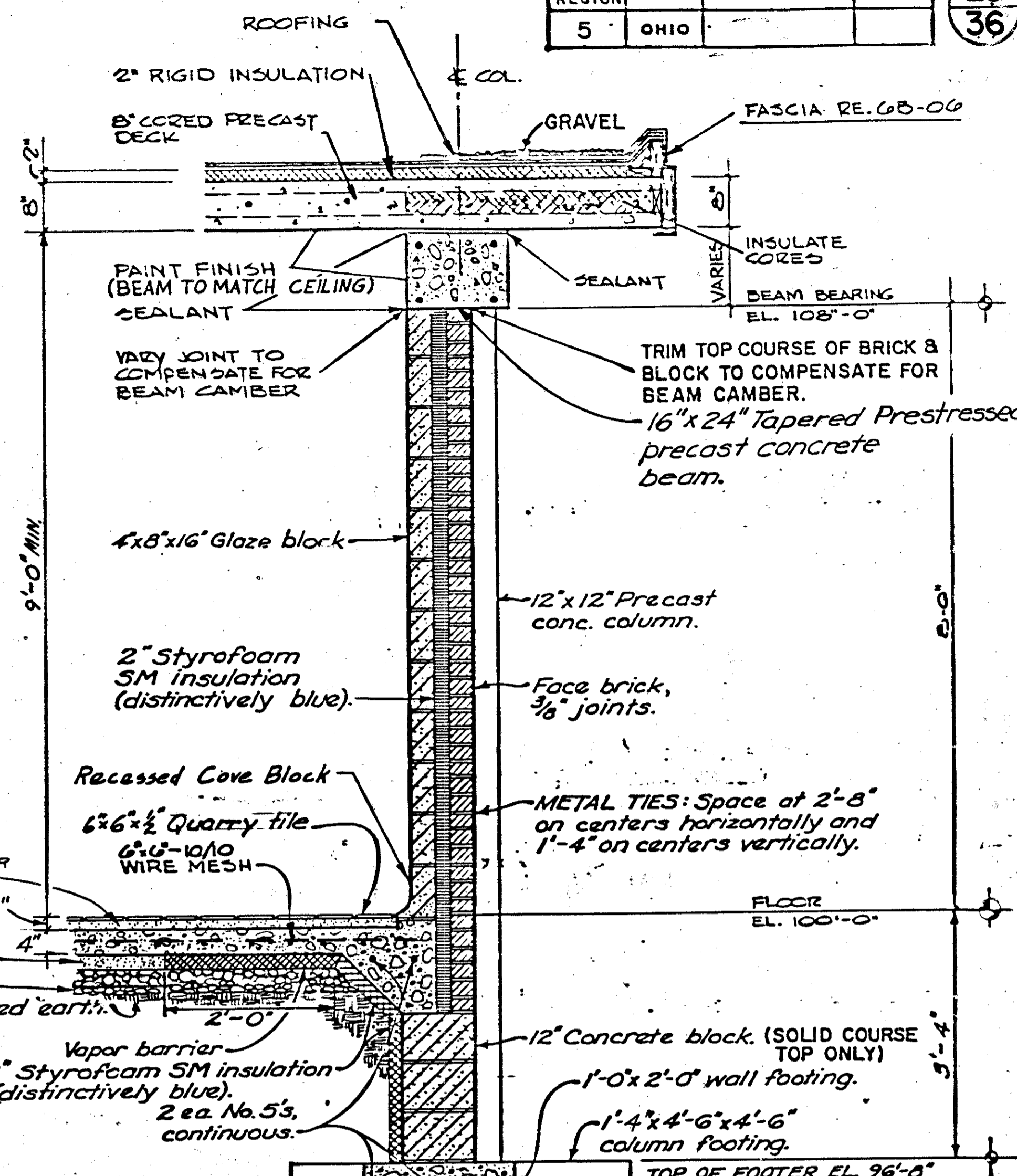
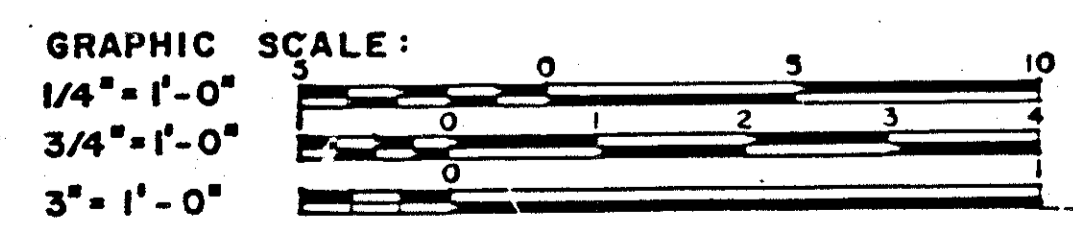


LAKE COUNTY
LAK-90-11.90



PRESTRESSED BEAMS ARE TO BE TAPERED FROM 24" IN FRONT TO 12" IN BACK TO GIVE ROOF SLOPE FOR PROPER DRAINAGE. PROVIDE 12" PRECAST SELF BEARING LINTEL BEAM, FRONT ONLY.

Note: Engineer must relate elevations of Motorist Services Building to elevations on site plan. Re. 6B-05.



OHIO BUREAU OF DESIGN SERVICES		SHEET NO. RRR 6B
DEPARTMENT OF TRANSPORTATION		
REVISIONS: 10-13-82	MOTORIST SERVICES BUILDING & STORAGE UNIT	DATE 9-1-70
PREPARED BY DEPARTMENT OF PUBLIC WORKS ADAMS, HARDER, KINCHLOE, KOCHER, SWEARMOEN		