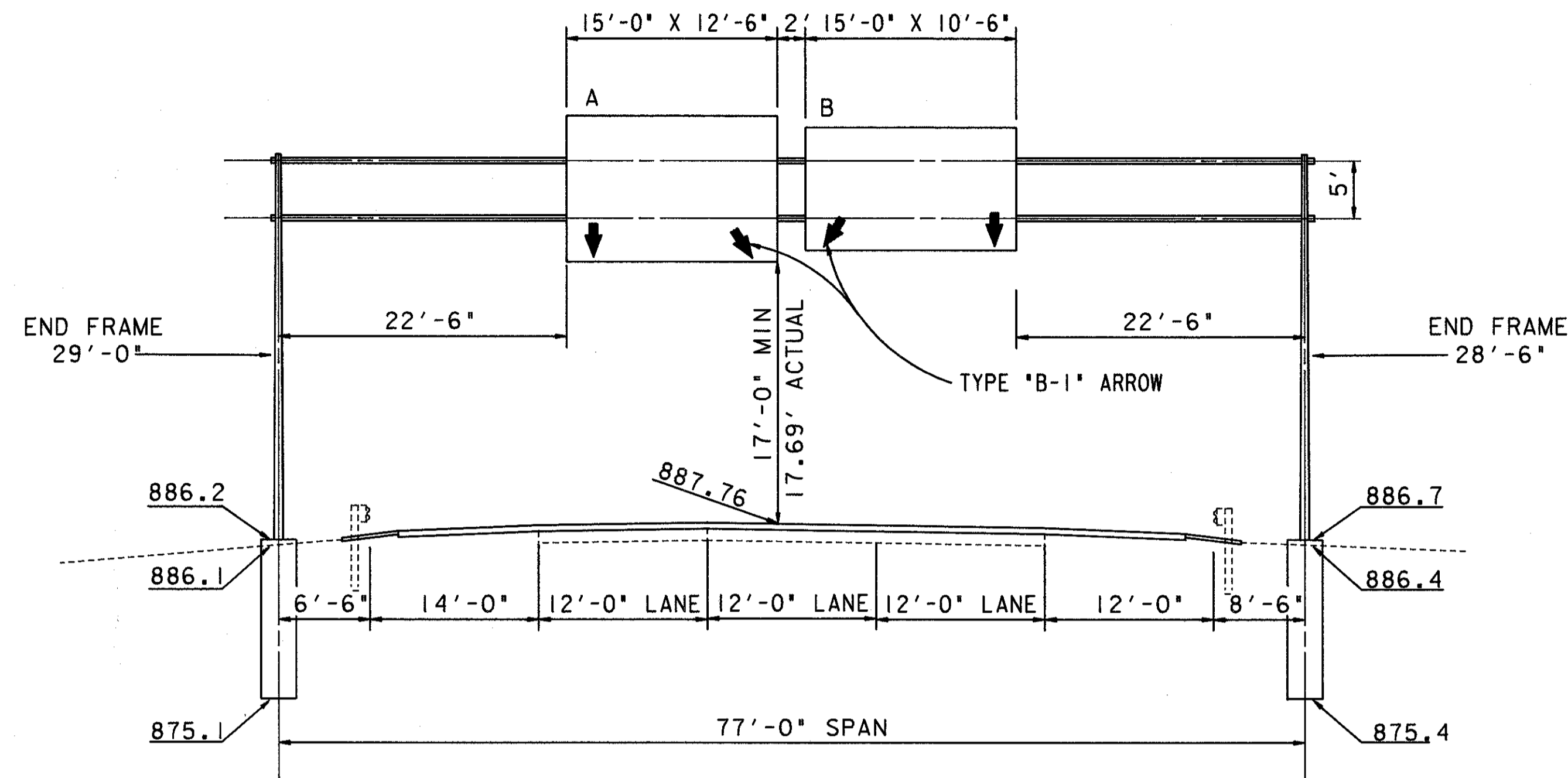
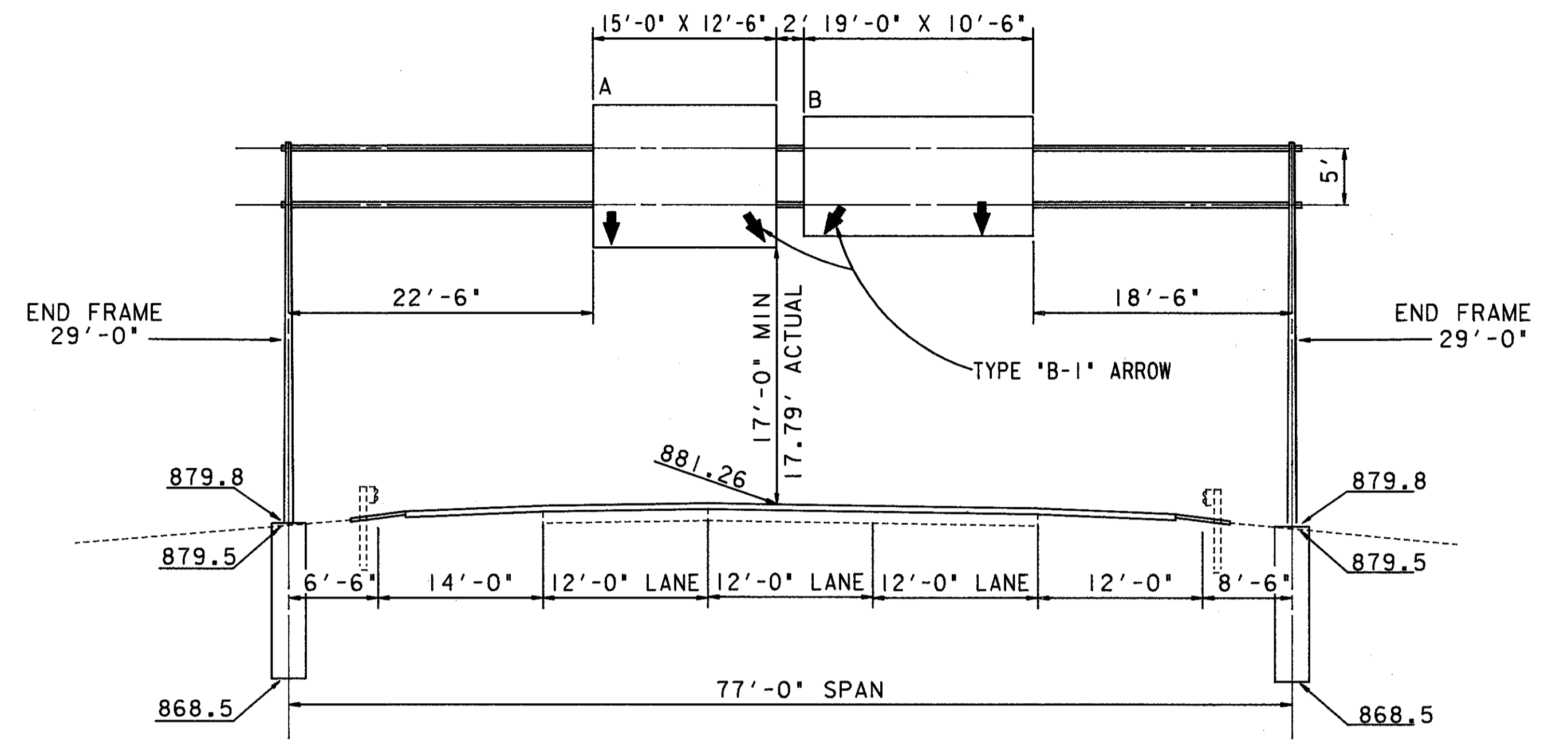


1-A

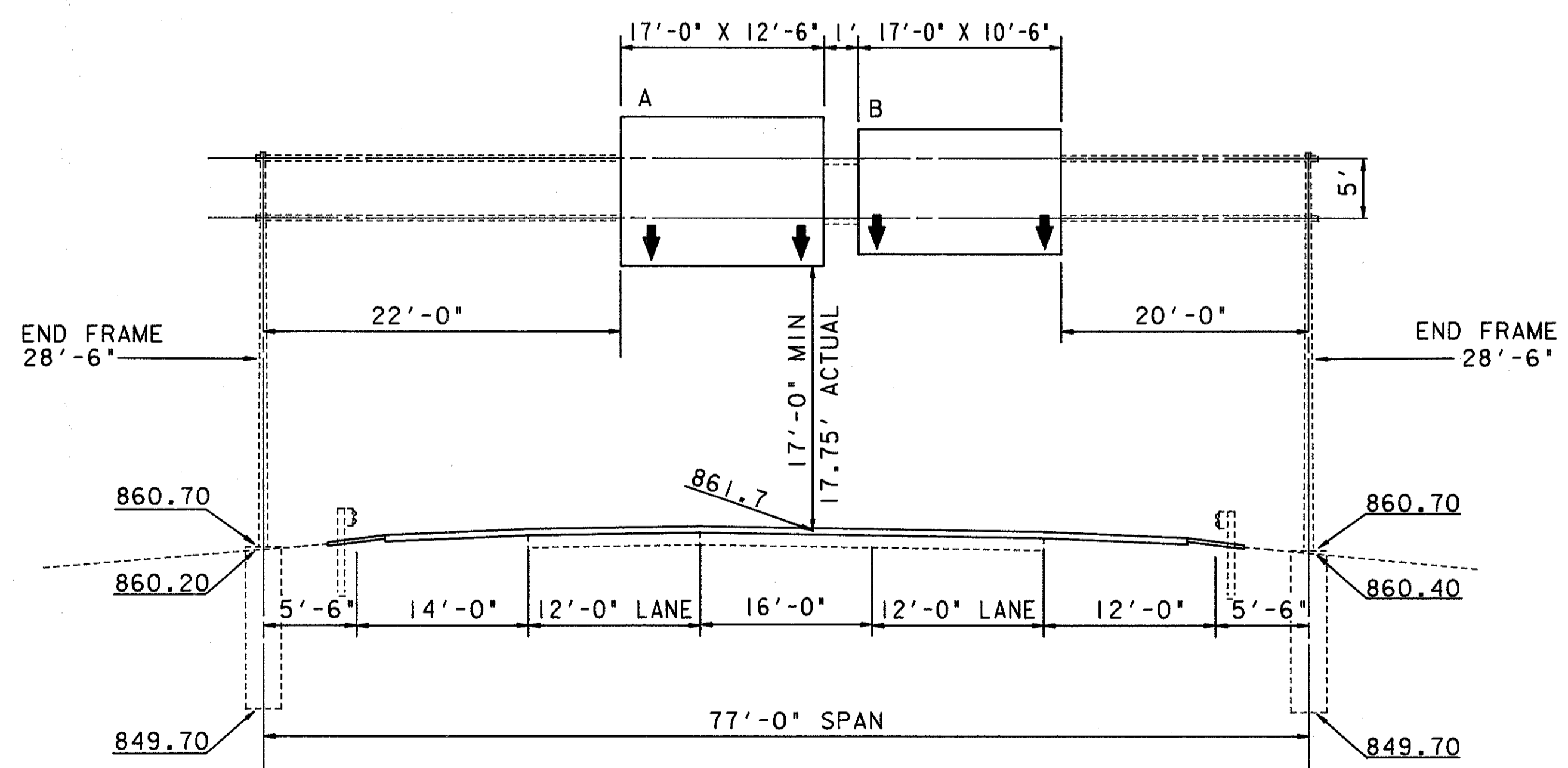
PLOT SUBMITTED: 30-SEP-1992 09:43  
 FILENAME: dgn  
 PLOTTED BY: BANASZAK  
 PLOTTED FROM: c:\dgn\pid5772\5772ted.dgn



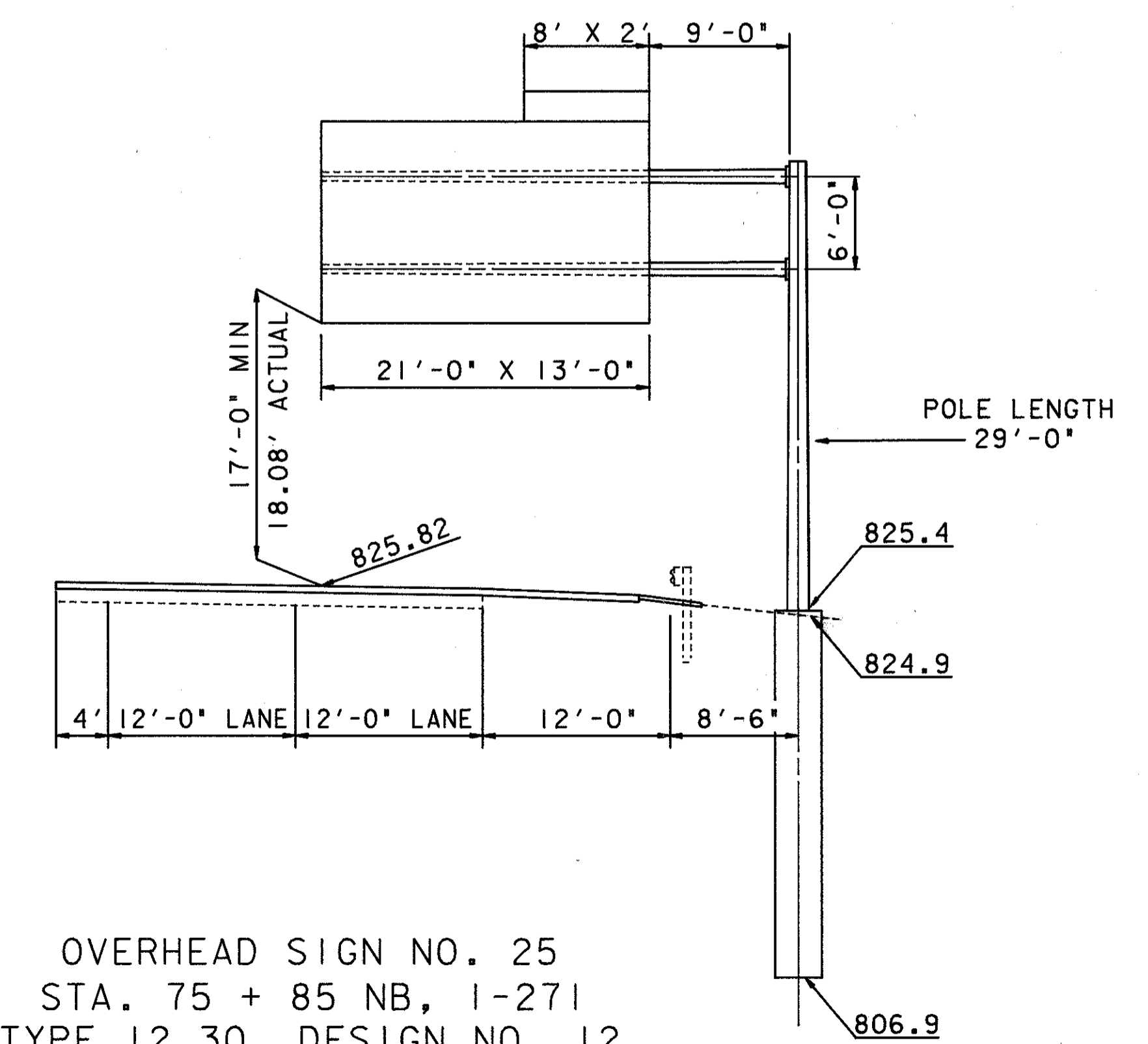
OVERHEAD SIGN NO. 10  
 STA. 00+40 NB, I-271  
 TYPE 7.65, DESIGN NO. 8  
 77'-0" SPAN



OVERHEAD SIGN NO. 15  
 STA. 20+25 NB, I-271  
 TYPE 7.65, DESIGN NO. 8  
 77'-0" SPAN



OVERHEAD SIGN NO. 20  
 STA. 55+25 NB, I-271  
 EXISTING 7.65, DESIGN NO. 8  
 77'-0" SPAN



OVERHEAD SIGN NO. 25  
 STA. 75 + 85 NB, I-271  
 TYPE 12.30, DESIGN NO. 12  
 30'-0" ARMS

NOTE: ELEVATION VIEWS ARE NOT TO SCALE  
 NOTE: PAVEMENT ELEVATIONS SHOWN INCLUDE RESURFACING.  
 NOTE: ALL SIGN SUPPORT ELEVATIONS ARE SHOWN IN DIRECTION OF VIEWING SIGN FACES.